



COKE

It's the real thing



ROUSSEL'S

9 Elm Street, Keene

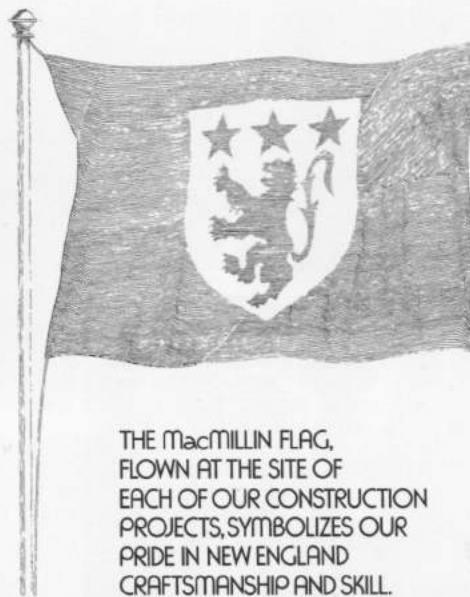
352-2326



KEENE VOLKSWAGEN

Key Road

357-0700



THE MacMILLIN FLAG,
FLOWN AT THE SITE OF
EACH OF OUR CONSTRUCTION
PROJECTS, SYMBOLIZES OUR
PRIDE IN NEW ENGLAND
CRAFTSMANSHIP AND SKILL.

THE MacMILLIN COMPANY, INC.
BUILDERS



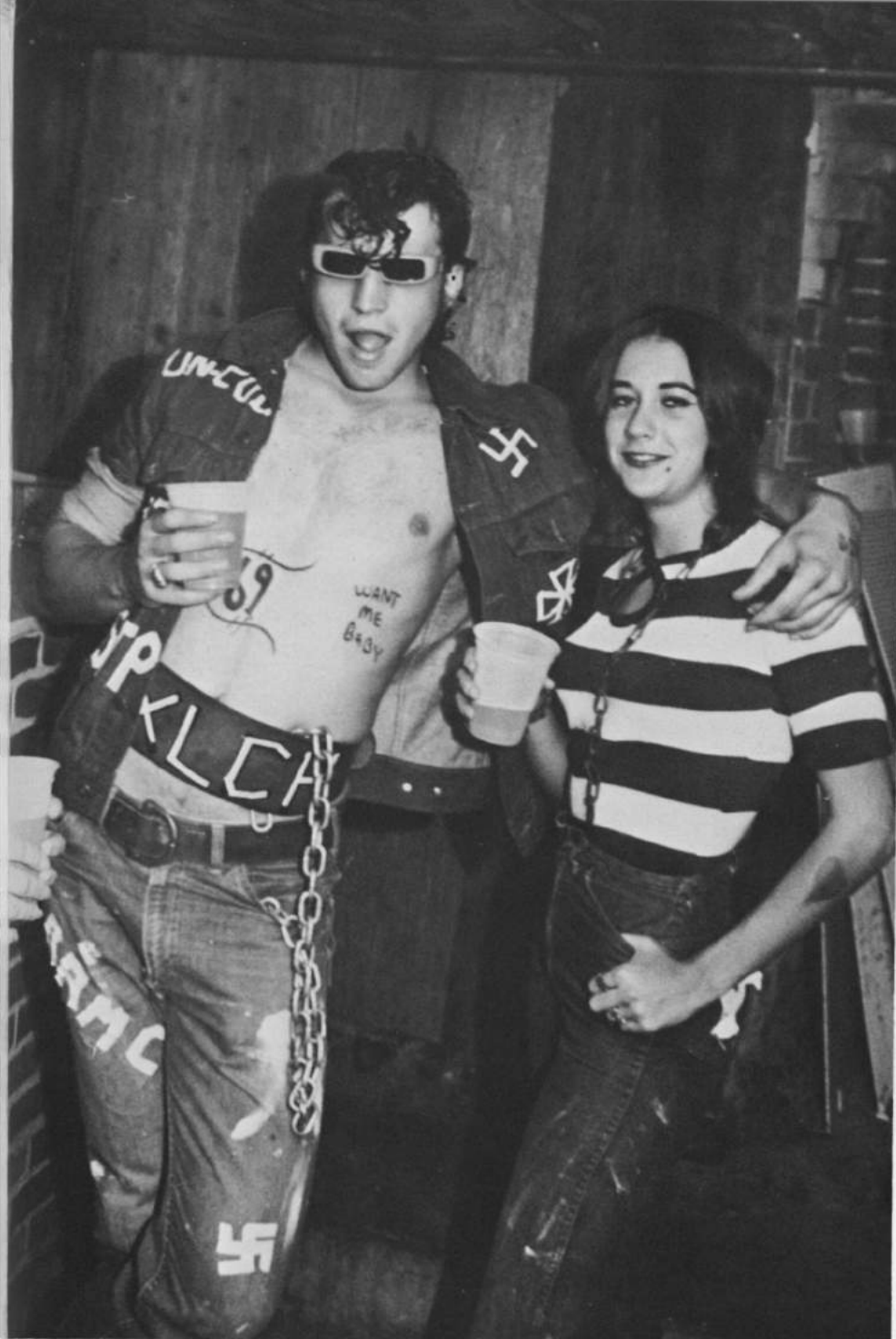
KEENE · NEW HAMPSHIRE

MEMBER, THE ASSOCIATED GENERAL CONTRACTORS OF AMERICA • ASSOCIATED BUILDERS & CONTRACTORS, INC.

ALPHA PI TAU



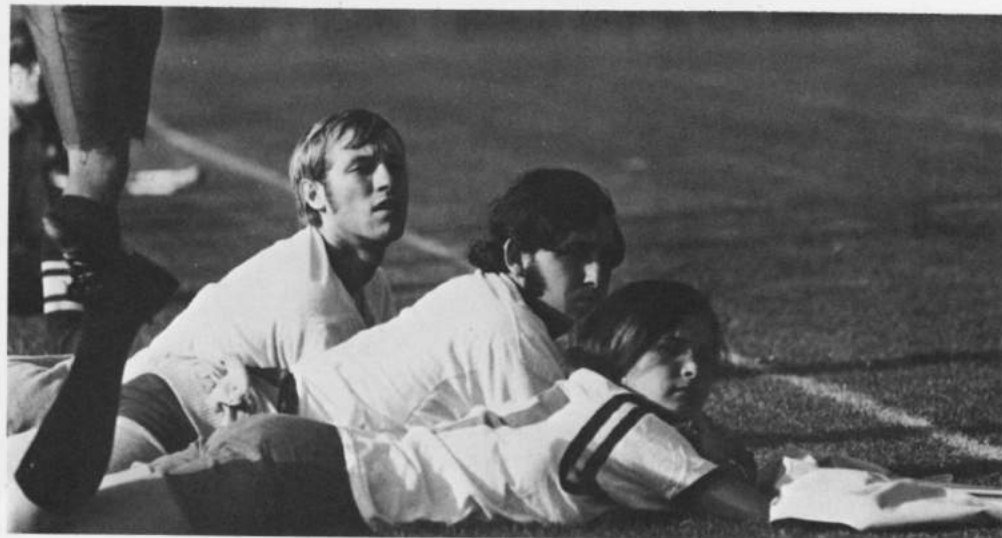
President
 Mike Guerrette
Executive Vice-President
 Victor Racicot
Administrative Vice-President
 Tom Duda
Secretary
 Harry Stout
Treasurer
 Roger Dussault
Sargent-at-Arms
 John Linder
 Steve Armstrong
 Hank Beecher
 Bob Breton
 Pete Brown
 Steve Burke
 Jeff Burrows



Carlos Cardoso
 Nate Carey
 Frank Colyn
 James Craig
 William Dugan
 Kevin Fair
 Bob Francais
 Dan Hager
 Jim Hobin
 Brent Hosking
 Ernie Johnson
 Pete Kendall
 David Linatsas
 Mike Maher
 Dan Marshall
 Chris Mataragas
 Charles Maturo
 Brian McCullough
 Ed McGarrigle
 Dick Nault
 Brian Norton



Frank Pasek
 Bill Paterson
 Richard Provencher
 Dale Pyer
 Bob Reardon
 Mike Roche
 Tim Ross
 Steve Sheridon
 Nick Skaltsis
 Andy Soucy
 Jack Stanton
 Bill Staples
 Chris VonSück
 John Sullivan
 Wayne Walker
 Jim Weishaupt
 Dave White
 Jim Yeager
 Joe O'Leary



KAPPA DELTA PI





TAU KAPPA EPSILON

President

Robert Simpson

Vice-President

Robert Merritt

Secretary

Michael Terrian

Treasurer

Richard Hamilton

Historian

Douglas Oster

Chaplain

Johnathan Zedalis

Sargent-at-Arms

Michael Aumond

Rush Chairman

Edmund Howard

Joseph Amaio

Lee Clark

Jason Crook

Robert Cunningham

Dexter Durant

Gerald Eckman

Quentin Estey, Jr.

William Gardner

Stanley Garczynski

Robert Girard

David Gustafson

Peter Janosz

James Johnston

John Kane

Kevin King

Thomas Kralovic

Martin Mahoney

William Morin

Robert Morse

Bradley Mousseau

Patrick Murphy

Kevin Mullavey

Leanard Nelson

Robert Peach

Paul Rossini

Anthony Slatum

Edward Silk

Mark Sowa

Gary Spevack

John Stokel

Barry Uncles

Matthew Wietecha

Dale Woodward







PHI MU DELTA



President

Peter Hanrahan

Vice-President

Mike Salis

Housing Vice-President

Duane Webster

Finance Vice-President

David Westover

Secretary

James Murphy

Social Chairman

Gary Parnham

Athletic Director

Ron McGonis

Peter Adamovich

Ken Alger

Richard Barnes

John Becker

Steve Bourghese

Dale Brunelle

David Connor

Wayne Cotton

Robert Currier

Peter Desrochers

David Eames

Robert Frain

Al Gaber

Don Gibb

Daryl Graves

Jack Griffin

Willis Ingram

Brian Johnson

Rick Kerper

Louis Kolarik

Larry Lankhorst

Jim McDonald

Richard Morini

Ray Morris

Kevin O'Leary

Jon Otterson

Bill Papajohn

Steve Parker

Richard Proulx

Larry Robinson

Dexter Joyce

William Russell

Jeff Sakellar

Phil Soares

Charlie Sheaff

Gary St. Germain

David Taylor

Milton Tobey

Richard Todd

Robert Vreeland





Row 1: D. Jones, T. Bartlett, S. Carbee, S. Wheaton, S. Daley, C. Stevens, Dr. Sweeney, *advisor*. Row 2: N. Rand, J. Gravsls, *vice president*, B. Dudley, *treasurer*, J. Dzenis, N. Griffin, C. White, C. Roberts, J. Rathgeber, D. Trask, *Publications co-chairman*, S. Peila, *Publications co-chairman*, J. Perry, *Publications co-chairman*. Row 3: J. Heintz, K. Lindquist, *Student Senate Representative*,

D. Holmes, D. Field, D. Hatchway, *vice president*, M. Marchand, *vice president*, M. West, *vice president*, S. Lester, L. Clark, J. La-Flamme, S. McGettigan. Row 4: J. Rice, D. Warner, S. Foster, *recording secretary*, T. Bacon, J. Gabryszewski, *corresponding secretary*, B. Jubenville, L. Cote, B. Lessard, R. Dussault, *president*, C. Legg.

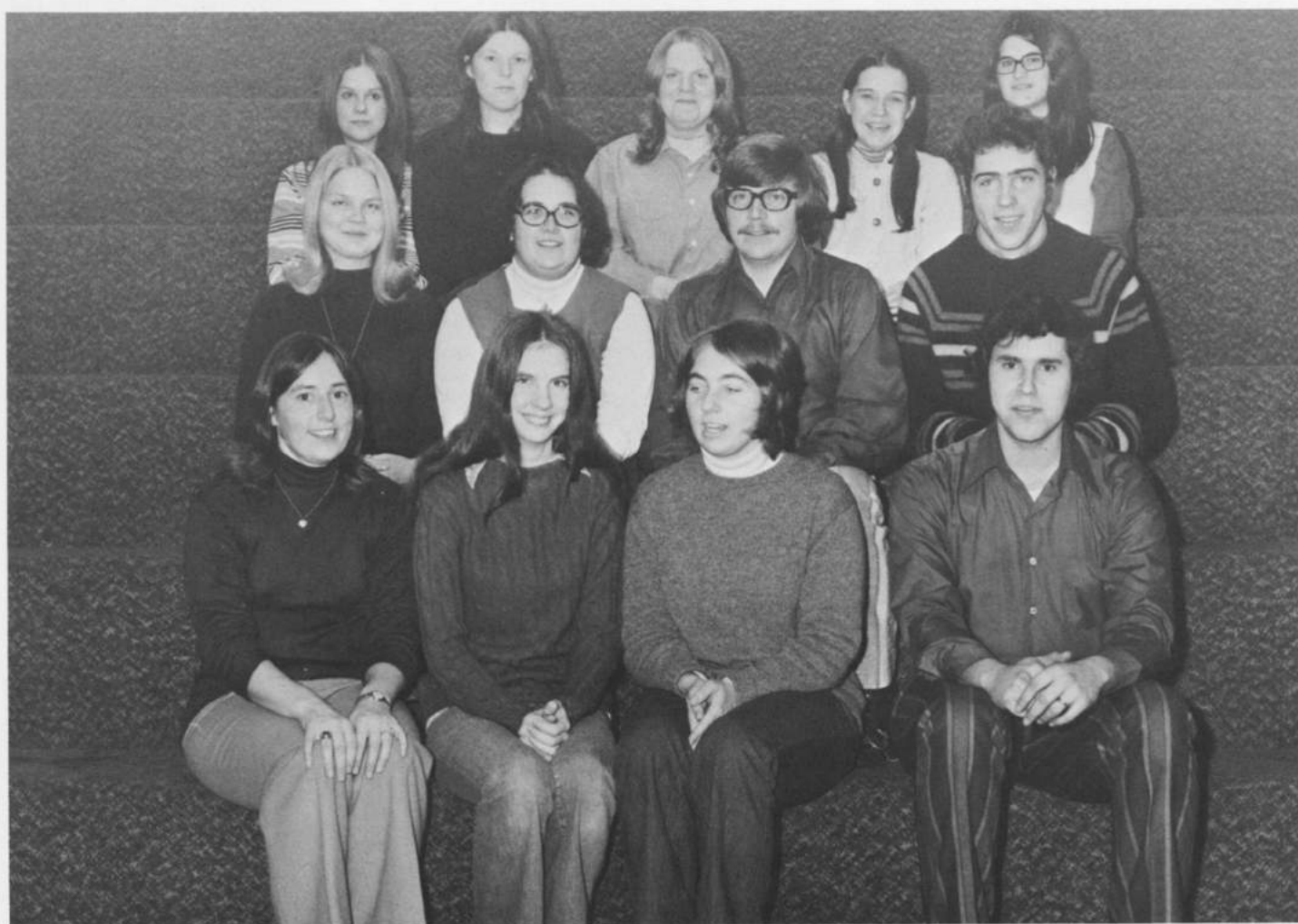
ASSOCIATION FOR CHILDHOOD EDUCATION INTERNATIONAL

Association for Childhood Education helps to promote and co-ordinate activities for the betterment of children. Each week, members of ACE run recess at St. Joseph's School.



BETA BETA BETA

Furthering educational experiences in the field of biology is the main concern for Beta Beta Beta. This club sponsors the many Audubon films and lectures here on campus.



Row 1: J. Eck, D. Lincoln, M. Perry, M. Greenwald. Row 2: K. Koski, *treasurer*, L. Dionne, *secretary*, G. Parnham, *president*, L. Lankhorst, *vice president*, S. McKenna, P. Mataragas, B. Robinson, N. Finn, D. Woodbury.



Row 1: L. Elsworth, *president*, Dr. Cunningham, *advisor*, D. Drake, *vice president*. Row 2: J. Patterson, J. Blair, S. Wheaton, S. Daley, L. Kiessling. Row 3: P. Carney, *Social Council Representative*, P. Holmes, D. Davis, P. Caron, M. McLaughlin, M. Grazen. Row 4: D. Cushing, E. Vieweger, J. Mellon, L. Fournier.

CAMPUS GUIDES

Campus Guides are the College's representatives to the New Hampshire schools. They assist at College Days and giving tours at KSC.





CAMPUS RESIDENCE COUNCIL

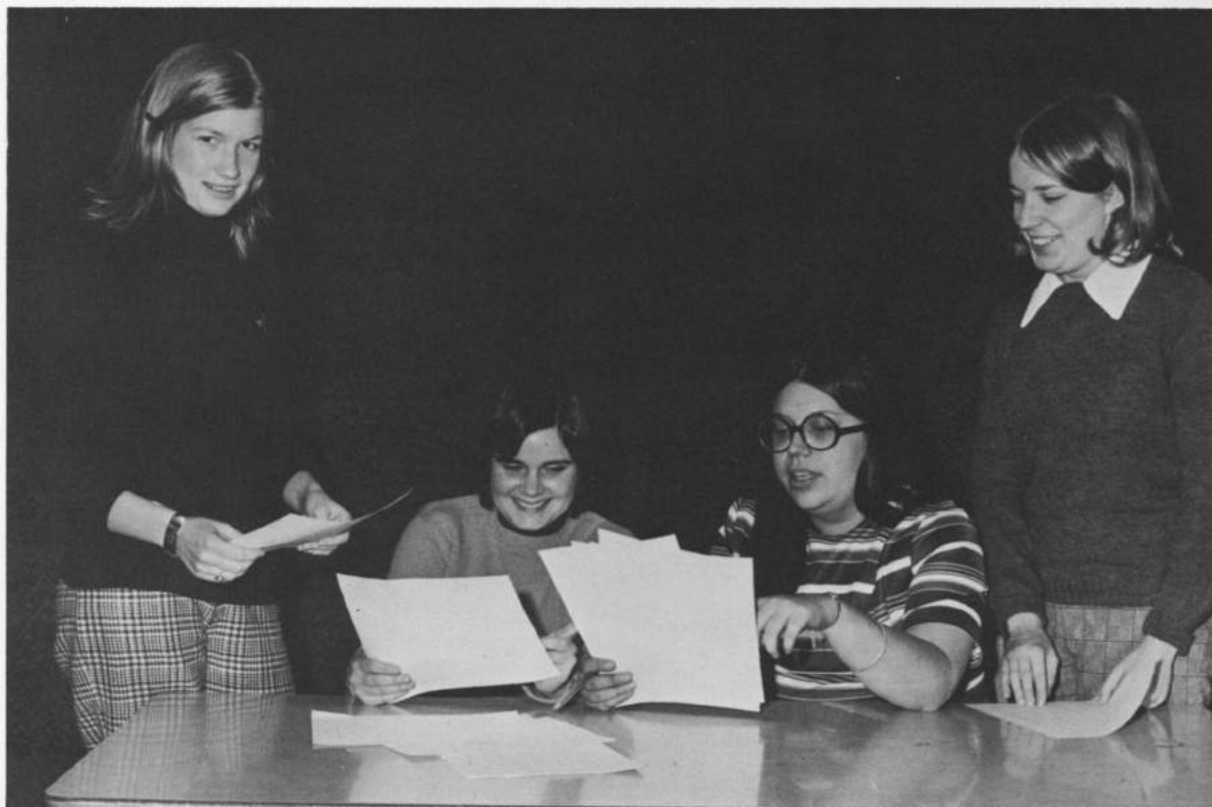
The Campus Residence Council formulates broad matters of policy governing in residence halls and houses. They originate and define guidelines, under which these halls and houses establish the standards which govern living conditions.



Row 1: Dean Keddy, Dr. Grayson, Dr. Hildebrandt. Row 2: S. Graves, S. Esons, C. Miller, Dean Aceto. Row 3: J. Tautian, A. Robitaille.

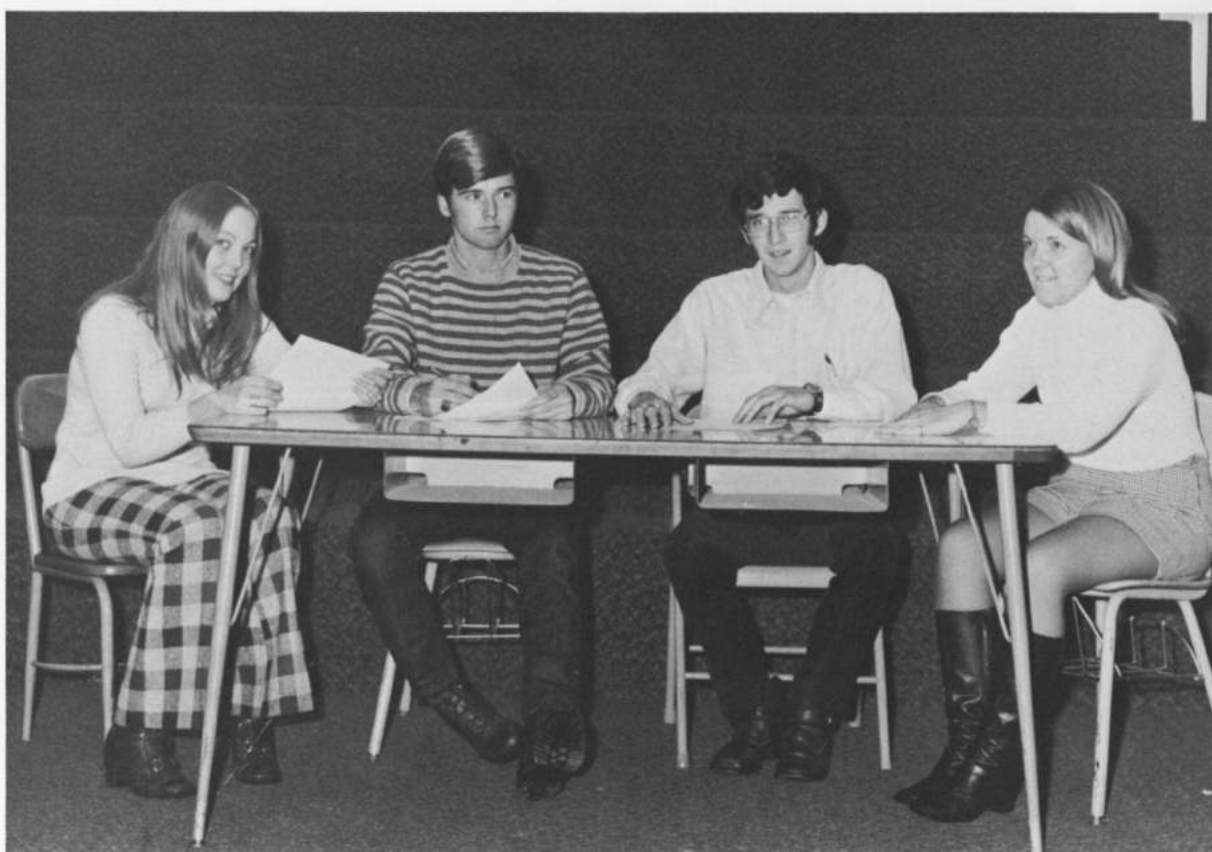
1972

C
L
A
S
S



S. Callahan, *treasurer*, T. Buckley, *vice president*, S. Lemos, *president*, K. Keegan, *secretary*.

K. Hopping, *treasurer*, C. Boyle, *vice president*, B. Mousseau, *president*, J. Paterson, *secretary*.



1973

1974



J. Faquerquist, *vice president*, S. Borghese, *president*, C. Godin, *secretary*.

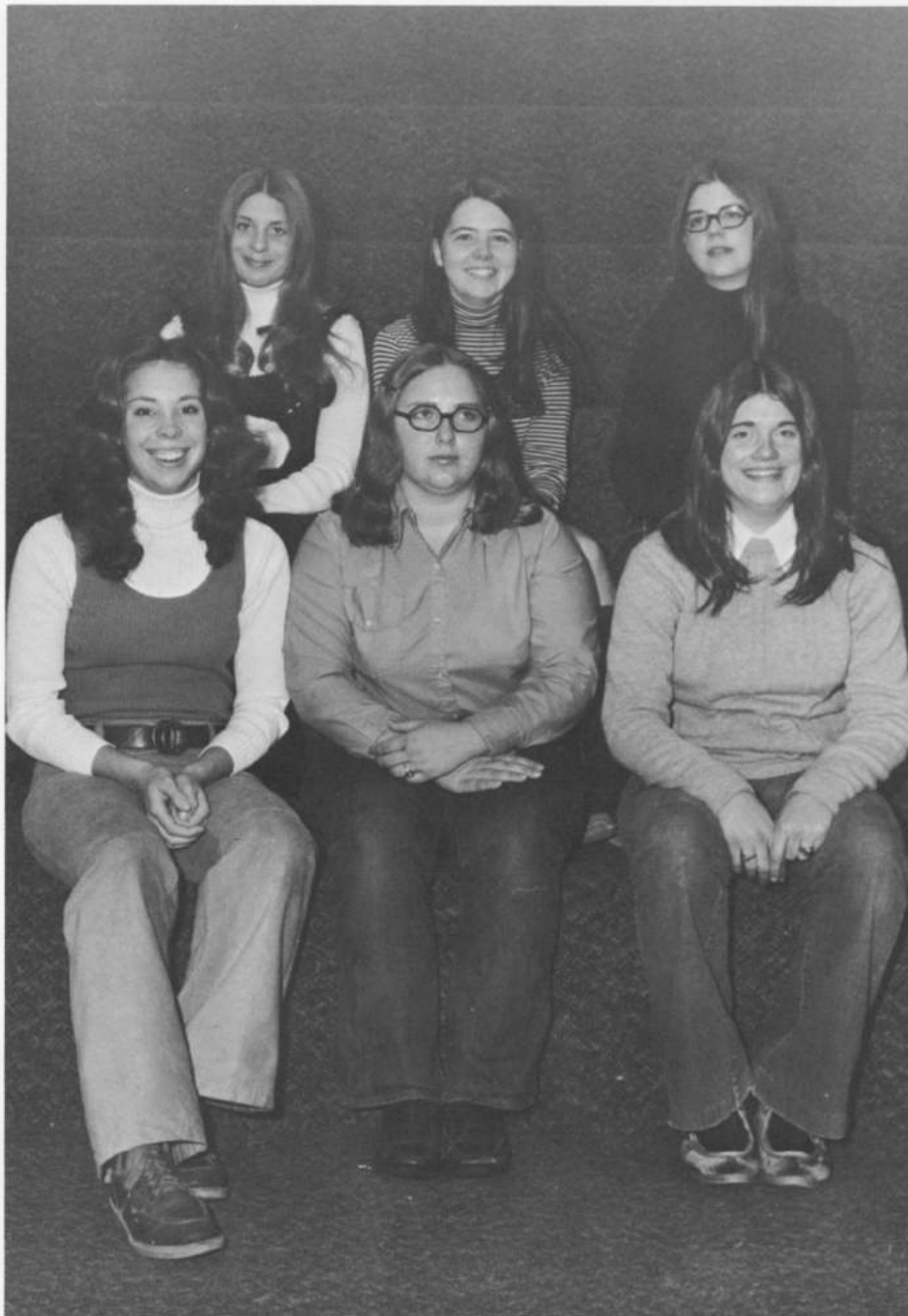
Row 1: M. Fales, *recording secretary*, N. Hines, *vice president*, T. Carmichael, *president*, K. Jackson, *corresponding secretary*, S. McGettigan, *treasurer*. Row 2: W. John-

son, *student senator at large*, D. Neuhauser, *student senator at large*, J. Smith, *Student Union Board*.

O
F
F
I
C
E
R
S



1975



Row 1: S. Crimson, A. Ruggiera, secretary-treasurer, N. Davis, president. Row 2: C. Godin, D. Reidy, M. Marchand.

COUNCIL FOR WOMEN STUDENTS

The primary purpose of the Council for Women is to provide a channel of communication between women and administration.

HISTORY CLUB

The History Club provides social functions so as to stimulate communications in the history field. The members help plan and organize other worthwhile programs to enable other students to become interested in world and local events.



Row 1: B. Burford, D. DiSalvo, C. McLean, *secretary*, K. Sikoski, D. Kyle, *Student Senate Representative*. Row 2: S. Ratcliffe, *vice president*, C. Moul, J. Carlson, *treasurer*, E. Couture, *president*, C. Shomsky, *Social Council Representative*.



Promotion of industrial education curriculum and professionalism is the object of the Industrial Education & Technical Association. This year, they sponsored a speaker from the Yankee Power Plant.

INDUSTRIAL EDUCATION AND TECHNICAL ASSOCIATION

Row 1: D. Lovejoy, secretary, B. Hosking, vice president, Mr. Dudley, advisor, B. Patterson, president. Row 2: L. Nelson, Student Sen-

ate Representative, L. Robichaud, Social Council Representative, B. Chesson. Row 3: C. Von Sück, E. Haffner, B. Fox.





Row 1: J. Beckwith, *president*, D. Ayotte, C. Antell, *secretary*, P. Loizeaux. Row 2: M. Fales, K. McGregor, N. Rand, *treasurer*, R. Hill, *vice president*. Row 3: C. Smith, B. Croteau, R. Curtis, H. Stahl. Row 4: S. Ensign.

INTERVARSITY CHRISTIAN FELLOWSHIP

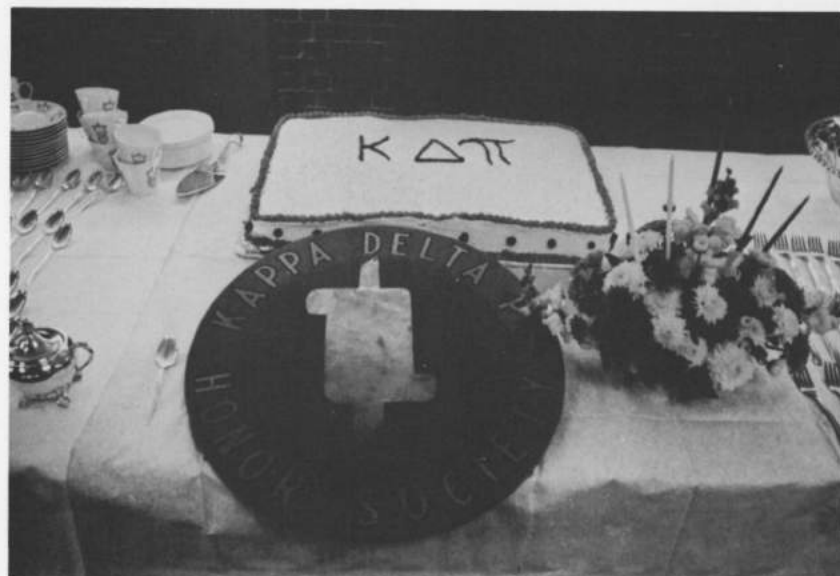
Studies into the life Christ is the prime concern of the IntersVarsity Christian Fellowship. The club sponsored Arthur Blessitt, a minister from Sunset Strip, this year.





Row 1: F. Bushee, *first semester secretary*, M. Goodrich, C. Stevens, *first semester social secretary*, A. Buckley, M. Miller. Row 2: R. Haven, *vice president*, R. Warren, *second semester secretary*, Miss Incognito, B. Bevins, S. Merrill, D. Stone. Row 3: P. Keyes, *first semester president*, J. Gagnon, T. Hamre, G. LeBlanc, J. Beau-

lieu, M. Miles, P. Smith, P. Smith, P. Covey, *second semester social secretary*, Dean Keddy, *charter member*. Row 4: B. Black, R. Curtis, *second semester president*, C. Sheaff, R. Morris, *second semester Student Senate representative*, Mr. Nugent, *advisor*, N. Zrate, D. Warner, J. Carlson.



KAPPA DELTA PHI

Honoring students who have an accum of 3.2 or over and are education majors is the main purpose of Kappa Delta Pi. Many speakers such as Dr. Ch'en, Dr. Lohman, Dr. Grayson and Professor Andrews were sponsored this year.

KRONICLE

The *Kronicle* is the college annual produced by students to depict life at KSC through pictorial and literary means.



Row 1: K. Browning, D. Davis, B. Ransom, *editor*. Row 2: D. Westcott, A. Brodeur, K. Sikoski. Row 3: J. Carlson, J. Drake.



MONADNOCK

The *Monadnock* is the student owned and operated newspaper which publishes weekly the activities of the College. The *Monadnock* provides valuable practice in journalism for its staff.



Row 1: M. Gingras, campus editor, R. Boisvert, executive editor, G. Pilotte. Row 2: M. O'Leary, R. Lyle, advertising editor, B. O'Brien. Row 3: P. Gilmartin, cartoonist, A. Brodeur, M. Hall.





Row 1: D. Taylor, *vice president*, L. Zucco, *treasurer*, J. Wood, *president*, D. Pyer, *Student Senate Representative*, V. Jamison, *secretary*, Dr. Morris, *advisor*. Row 2: J. Griswold, W. DuBois, S. Manus, H. Smith, S. Crandell, G. Blake. Row 3: P. Howes, J. Struss,

S. Place, K. Alger, J. Culver, D. Stone, J. Hayes. Row 4: L. Livingston, D. Bragg, L. Fraser, M. Manuel. Row 5: W. Sullivan, J. Devlin, C. Brown, C. Batchelder, J. Marcuse, C. Constantine, M. Bogle, M. Chapin, D. Morasky.

MUSIC EDUCATORS NATIONAL CONFERENCE

MENC is the organization which promotes an interest in music and in music education. Sidney Fox, a music educator, was sponsored this year.





Row 1: M. Devost, appointed member, C. Kilbride, vice president, S. King, president. Row 2: T. Barrett, M. McDonnell, Social Council Representative. Row 3: R. Archambault, Student Senate Representative, J. Raby, vice president, C. Raudonis, treasurer.

NEWMAN CENTER

The Newman Center is a drop-in center for all students which provides religious, social, and recreational activities. A semi-formal Christmas Dance was held this year.





Row 1: D. Neuhauser, P. Carney, E. Breault, *secretary*, K. Bandouveres, *treasurer*, R. Sheinker, *vice president*, S. Grueter, K. Ford.
Row 2: D. Gibb, K. Jackson, N. Finn, M. Aumand, D. Gisco, K. Mur-

dick, S. Borghese. Row 3: C. Shomsky, M. McDonnell, B. Moody, R. Hamilton, C. Moul, K. Hopping, J. Icoognito.

SOCIAL COUNCIL

The Social Coordinating Council is responsible for sponsoring social activities for students on campus. Much of the entertainment brought to KSC is their doing.





Row 1: M. Rinne, D. Borynack, *secretary*, J. Cutter, *treasurer*, P. Holmes, *president*, K. Lindquist, *vice president*, S. Carbee. Row 2: L. Colyn, J. Beaulieu, D. Giso, T. Buckley, K. Keegan, C. Connolly.

Row 3: H. Maier, M. Fales, K. Ford, D. Cushing, D. Neuhauser. Row 4: S. McLaughlin, K. Rollins, P. Gray.

SPECIAL EDUCATION CLUB

Putting book theories into practice with exceptional children is the purpose of the Special Education Club. A Halloween Party was held in October. Later in the year the club sponsored a showing of children's art works at the Thorne Art Gallery.



STUDENT NATIONAL EDUCATION ASSOCIATION

SNEA is the second largest active chapter in New Hampshire, which is concerned with improving teacher education. They had Dr. Peters, winner of the Outstanding Teacher Award, speak at one of their meetings.

Row 1: S. Carbee, Student Senate Representative, J. Drake, vice president, C. Connolly, president, E. Whelpley, secretary-treasurer. Row 2: P. Caron, K. Rondeau, Executive Board, D. Davis, Executive Board, K. Troy, Executive Board, G. Schnell, D. Rys, Executive

Board, W. Ingram. Row 3: L. Kiessling, S. Ainsworth, J. Beaulieu, D. Lawson, P. Holmes, C. Carlson, D. Swenson. Row 4: D. Wescott, L. Colyn, B. Smith, T. Buckley, K. Keegan, K. Lindquist, C. Sheaff, K. Sikoski.



STUDENT SENATE

Providing a means for the expression of the students' views is the prime concern of the Student Senate. It helps to establish a more harmonious college community.



Row 1: R. Batchelor, vice president--social affairs, S. Carbee, vice president--student affairs, D. Kyle, president, D. Lavallee, secretary, D. McComb, treasurer. Row 2: K. Lindquist, J. Davis, R. Hill, G.

Eckman, T. Buckley, F. Jenne. Row 3: D. Neuhauser, R. Achambault, B. Mousseau, D. Gagne, W. Johnson. Row 4: E. Vieweger, M. Gingras.





Row 1: D. Neuhauser, M. Kelleher, *music director*. Row 2: D. Reidy, C. Penhale, M. Mitchell. Row 3: D. Gibbs, *general manager*, D. McComb, *Student Senate Representative*, B. Burford, *sales manager*.



WKNH

Providing entertainment, communications, and public service are the purposes of WKNH. WKNH also offers experience to students who wish to pursue a career relating to radio.





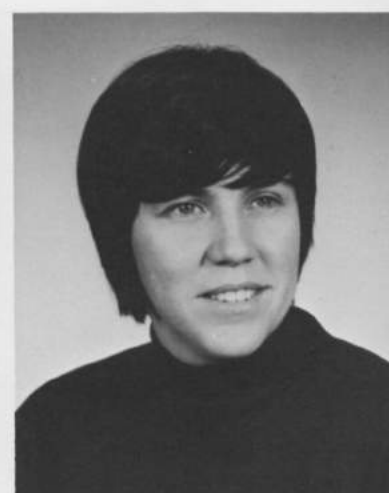
Howard L. Adams
Walpole, N.H.
Liberal Arts Biology



Susan Ainsworth
Nashua, N.H.
Elementary Education



Judy Anderson
North Walpole, N.H.
Elementary Education



Jean Andrew
Greenville, N.H.
Secondary Physical Education



William J. Ashworth
Claremont, N.H.
Secondary Math



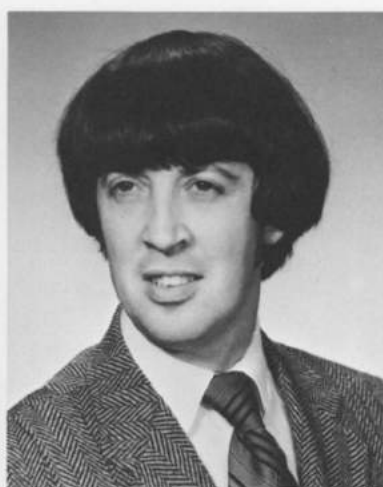
Donald A. Auclair
Keene, N.H.
Elementary Education



Rebecca J. Ball
Manchester, Mass.
Elementary Education



Carlene L. Barber
Hollis, N.H.
Liberal Arts Psychology



Michael W. Barlick
Jaffrey, N.H.
Elementary Education



Mary N. Beer
Keene, N.H.
Elementary Education



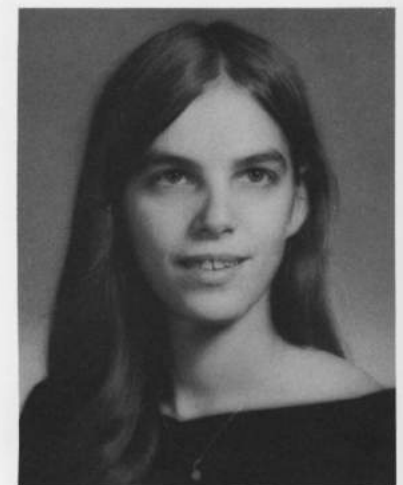
Jane L. Bell
Wilton, N.H.
Elementary Education



Diane L. Bergeron
Keene, N.H.
Elementary Education



Janet K. Berthiaume
Keene, N.H.
Elementary Education



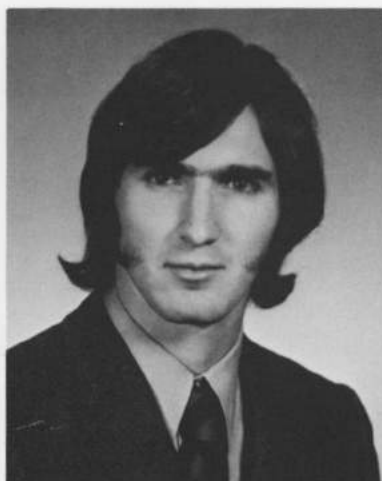
Sandra J. Berube
Haverhill, Mass.
Elementary Education



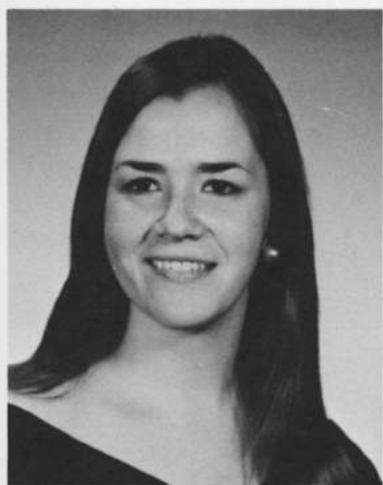
Jean E. Bartlett
Newport, N.H.
Home Economics



Joanne Beaulieu
Nashua, N.H.
Elementary Education



Henry W. Beecher
Keene, N.H.
Liberal Arts English



Jane E. Beecher
Keene, N.H.
Liberal Arts Psychology

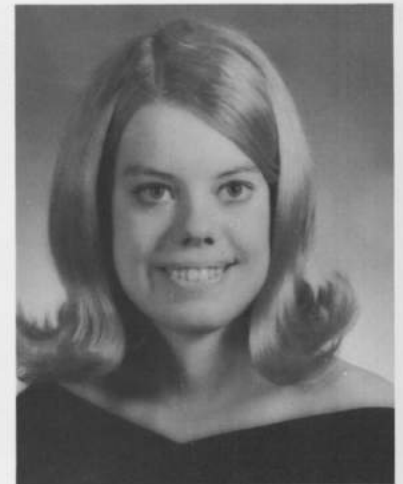




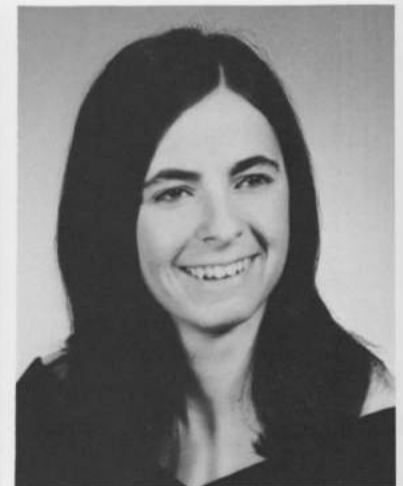
Barbara J. Black
Antrim, N.H.
Secondary English



Lawrence J. Blandini
Wakefield, Mass.
Elementary Education



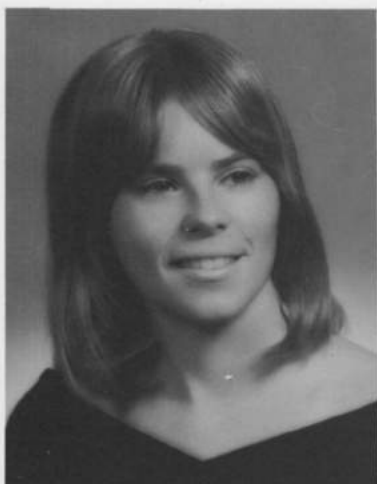
Bonnie J. Bourgoine
Claremont, N.H.
Elementary Education



Helen N. Bozek
Manchester, N.H.
Elementary Education



Cynthia L. Best
Merrimack, N.H.
Elementary Education



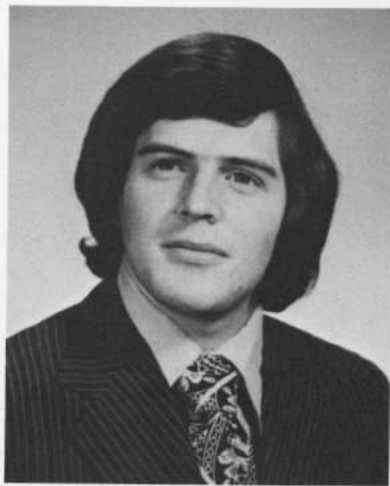
Deanna M. Bianco
Pittsfield, Mass.
Secondary Physical Education



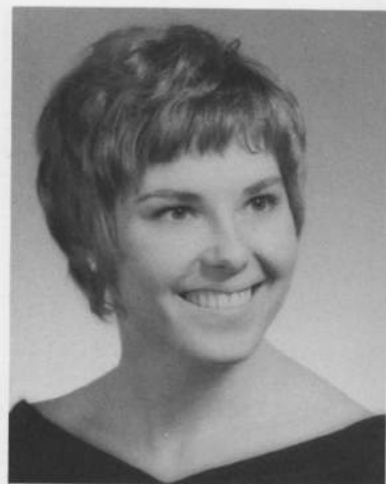
Nancy K. Biergiel
Stonehill, Mass.
Elementary Education



Joyce L. Bischoff
Manchester, N.H.
Elementary Education



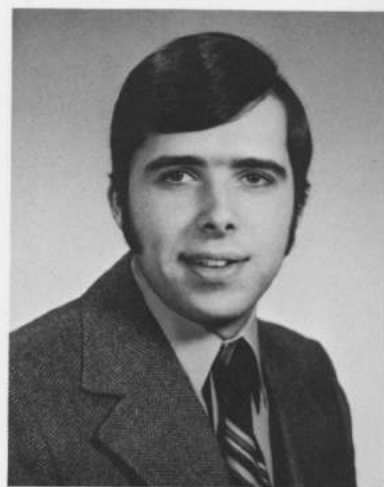
Robert P. Breton
Rochester, N.H.
Liberal Arts History



Nadine L. Briscoe
Schenectady, N.Y.
Home Economics



Sandra J. Brown
Concord, N.H.
Liberal Arts Psychology



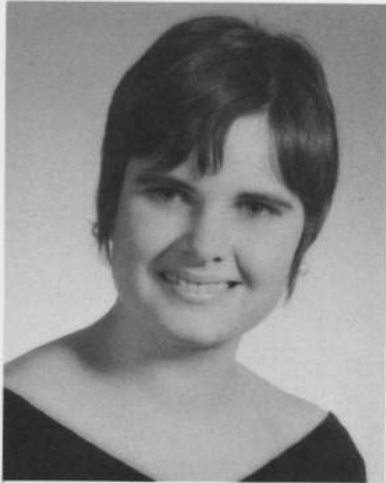
Peter A. Brown
Concord, N.H.
Liberal Arts History



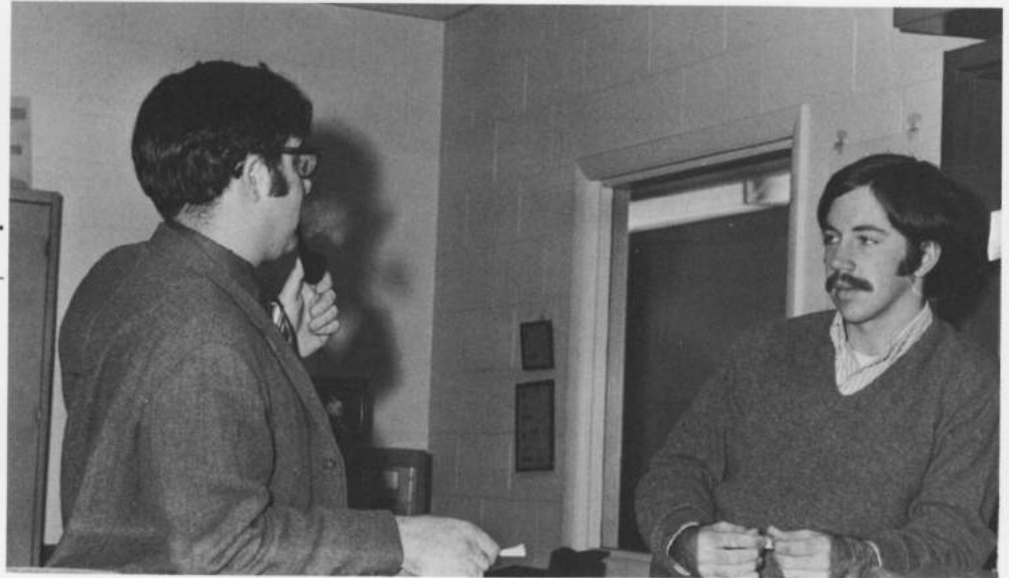
Sandra J. Brown
Concord, N.H.
Liberal Arts Psychology



Ann M. Buckley
Manchester, N.H.
Elementary Education



Patricia A. Buckley
Concord, N.H.
Elementary Education



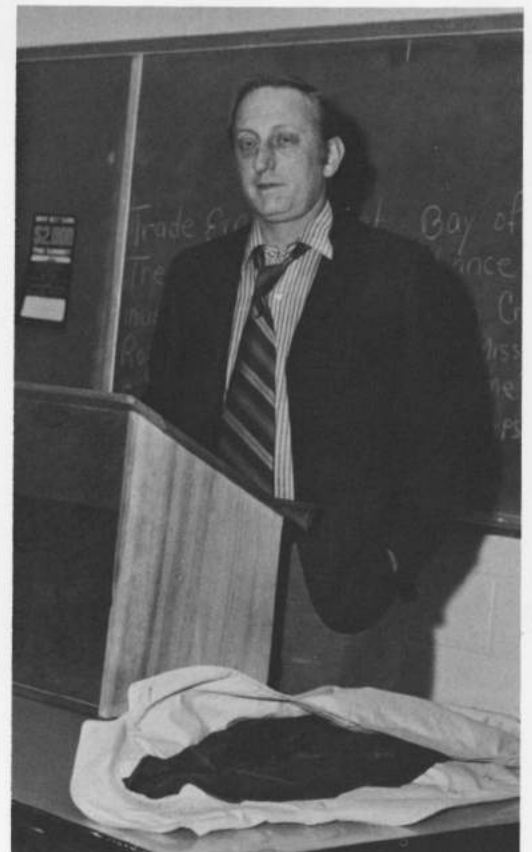
Diane Burgrave
New York, N.Y.
Liberal Arts Psychology



Francine R. Bushee
Lebanon, N.H.
Elementary Education

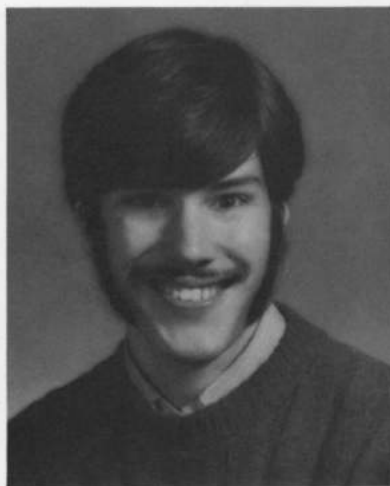


Patricia M. Byrne
Winchester, N.H.
Elementary Education





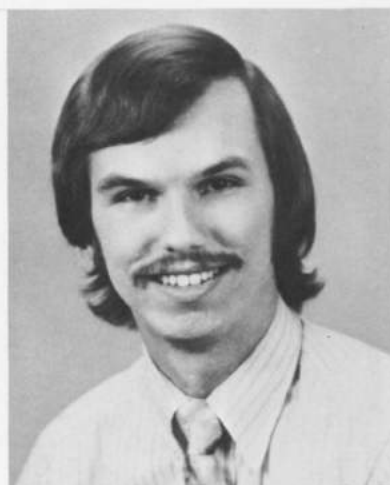
Susan M. Callahan
Keene, N.H.
Elementary Education



Loren R. Cardin
Nashua, N.H.
Secondary French



Judy A. Carlson
Charlestown, N.H.
Secondary Earth Science



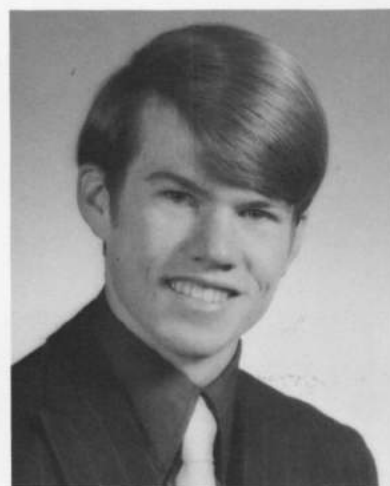
Robert A. Carlton
Milford, N.H.
Elementary Education



Martha M. Caron
Manchester, N.H.
Elementary Education



Pamela M. Caron
Dover, N.H.
Elementary Education



Bruce G. Carrier
Exeter, N.H.
Secondary Math



Ellen M. Cassily
Rochester, N.H.
Elementary Education



Ann Marie Chaput
Nashua, N.H.
Elementary Education



David H. Chase
Claremont, N.H.
Elementary Education



Jeanna E. Chase
North Pomfret, Vt.
Elementary Education



Shirley I. Clark
Keene, N.H.
Elementary Education



Lee-Ann Clement
Westminster, Mass.
Home Economics



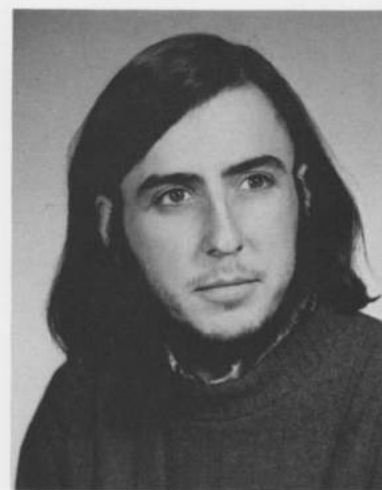
Lucy G. Clementi
Leominster, Mass.
Elementary Education



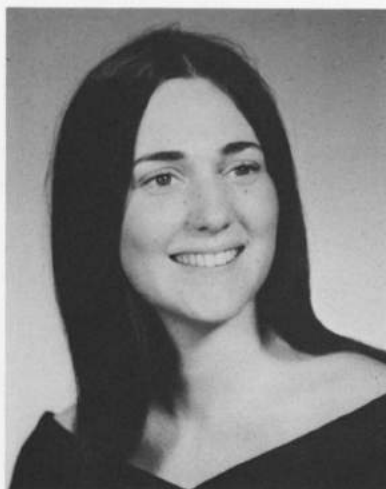
Lois R. Colyn
Manchester, N.H.
Elementary Education



Charlyne F. Connolly
Manchester, N.H.
Elementary Education



Richard D. Connor
Manchester, N.H.
Liberal Arts History



Charlene Conway
Manchester, N.H.
Elementary Education



Sylvia L. Cote
Nashua, N.H.
Secondary History



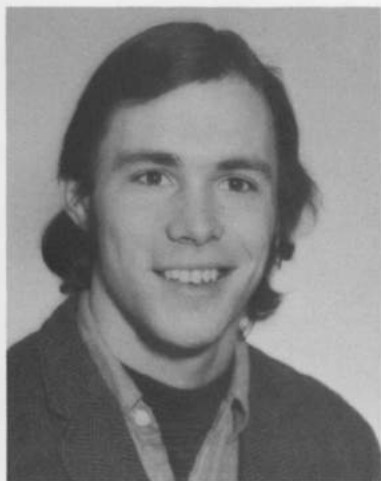
Martha J. Cox
Keene, N.H.
Secondary English



Michael A. Craft
West Chesterfield, N.H.
Secondary Math



Lorna D. Cunningham
Keene, N.H.
Elementary Education



Andrew G. Curtin
Wynnewood, Pa.
Liberal Arts English



Ronald S. Curtis
Claremont, N.H.
Liberal Arts Math



Kathleen A. D'Alessio
Peterborough, N.H.
Secondary Foreign Languages



Linda M. Danielson
Manchester, N.H.
Elementary Education



Debra A. Davis
Plymouth, Mass.
Elementary Education



Gordon B. Davis
Brattleboro, Vt.
Secondary Foreign Languages



Joann R. Davis
Ronkonoma, N.Y.
Elementary Education



John M. DeLancey
Keene, N.H.
Industrial Education



Deborah F. DiSalvo
Deer Park, N.Y.
Secondary History



Linda M. Dodge
Rochester, N.H.
Elementary Education



Nancy A. Dodge
Exeter, N.H.
Elementary Education



Leigh S. Dougherty
Manchester, N.H.
Elementary Education



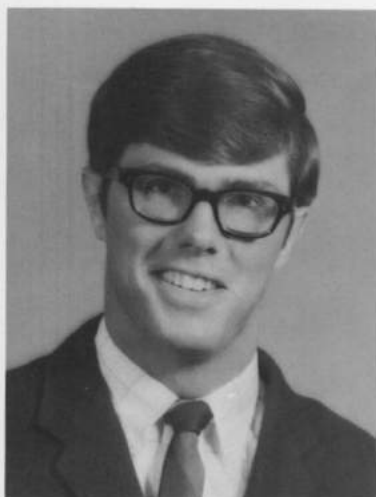
Cheryl A. Downing
Plymouth, N.H.
Liberal Arts English



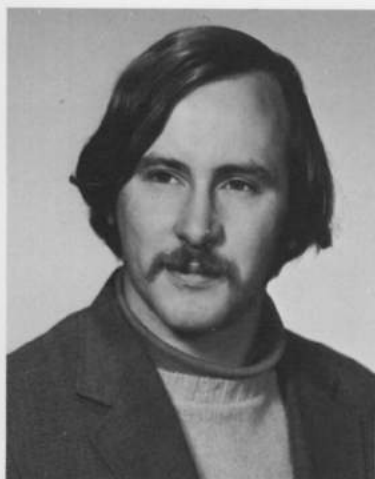
Gene A. Driscoll
South Windsor, Ct.
Elementary Education



Elizabeth B. Dubois
New Providence, N.J.
Elementary Education



Raymond W. Dugdale
Newburyport, Mass.
Secondary Math



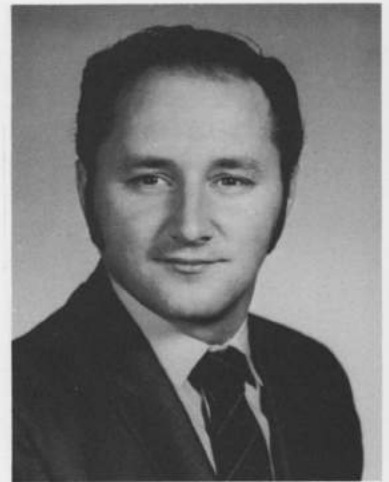
Dexter R. Durant, Jr.
Keene, N.H.
Industrial Education



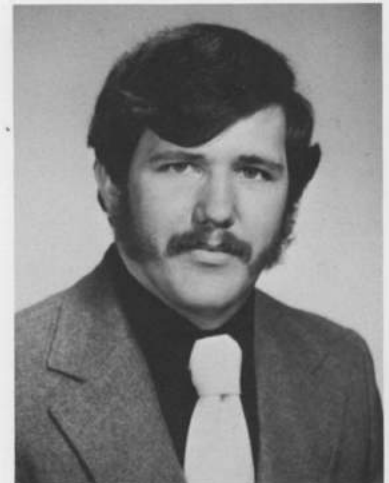
Gerald A. Eckman
Manchester, N.H.
Liberal Arts History



Stephen B. Elberfeld
Winchester, N.H.
Liberal Arts Biology



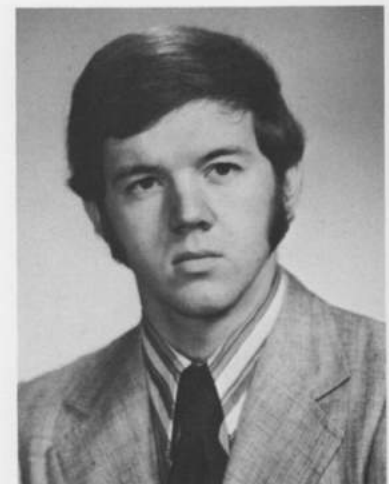
Wayne Enman
Keene, N.H.
Secondary History



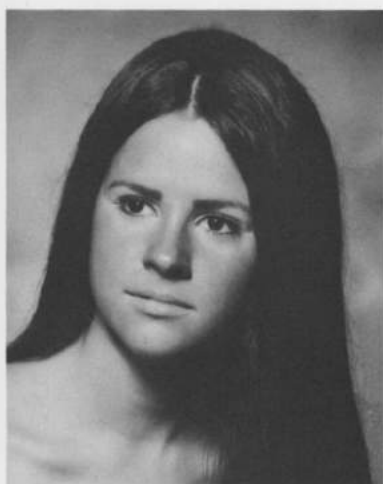
Quentin R. Estey, Jr.
Keene, N.H.
Secondary History



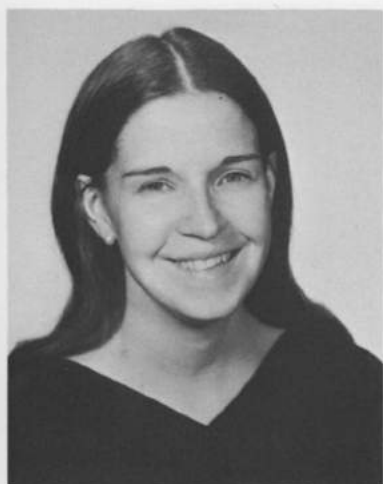
Karen Fair
Keene, N.H.
Elementary Education



Kevin J. Fair
Keene, N.H.
Secondary History



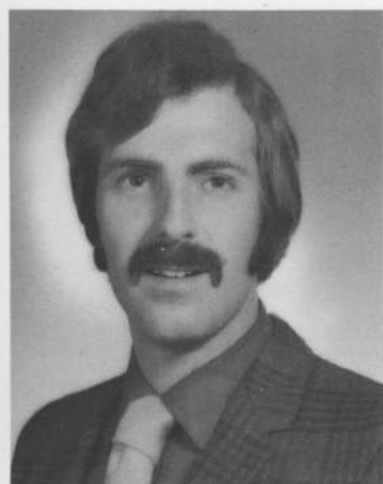
Sandra Fiffy
Keene, N.H.
Elementary Education



Nancy E. Finn
Newton Lower Falls, Mass.
Liberal Science Biology



Robert E. Francis, Jr.
Manchester, N.H.
Secondary History



Alan R. Gaber
Dover, N.H.
Elementary Education





Gladys Gengenbach
Newton, Ct.
Secondary Social Science



Lynn D. Gillam
New Ipswich, N.H.
Secondary Physical Education



Deborah A. Giso
Plaistow, N.H.
Elementary Education



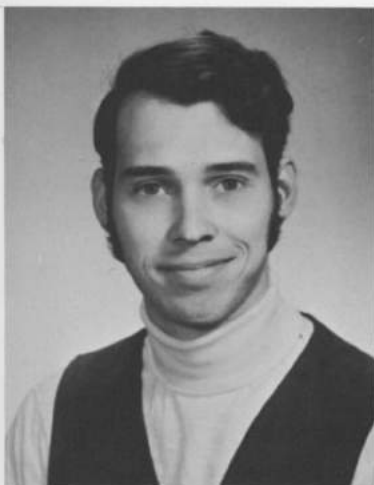
Melvin W. Gmyrek
Keene, N.H.
Liberal Arts History



Ellen M. Gomarlo
Winchester, N.H.
Elementary Education



Marylou Gonye
Derry, N.H.
Elementary Education



John E. Gordon, Jr.
Keene, N.H.
Liberal Arts Psychology

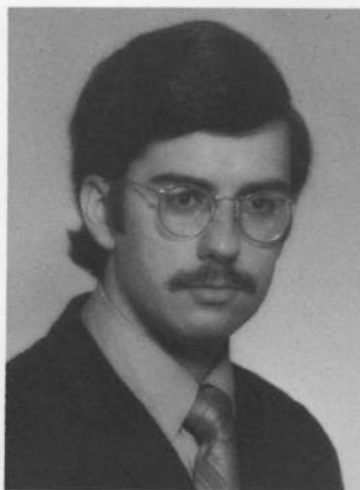


Carolyn L. Gould
Keene, N.H.
Elementary Education

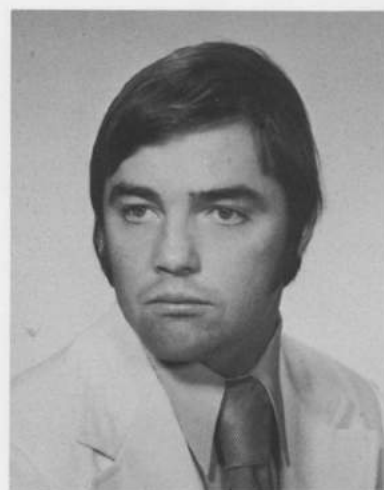


Pamela E. Gould
Keene, N.H.
Liberal Arts History





John A. Griffin
Concord, N.H.
Secondary History



David Gustafson
Manchester, N.H.
Liberal Arts History



Marcia A. Hall
Nashua, N.H.
Elementary Education



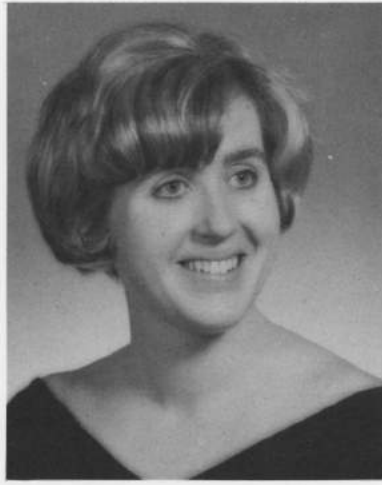
Joyce Hanlon
Keene, N.H.
Liberal Science Earth Science



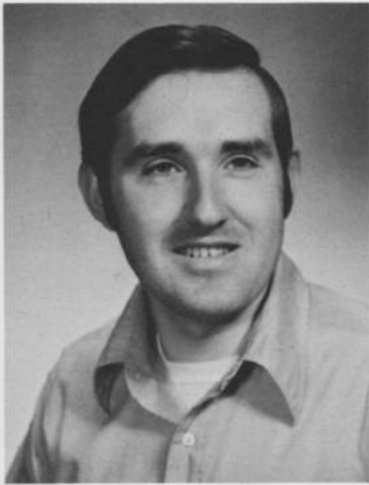
Richard B. Harding
Troy, N.H.
Secondary English



Wayne Harris
Marlborough, N.H.
Liberal Arts Psychology



Patricia S. Harte
Keene, N.H.
Liberal Arts Sociology



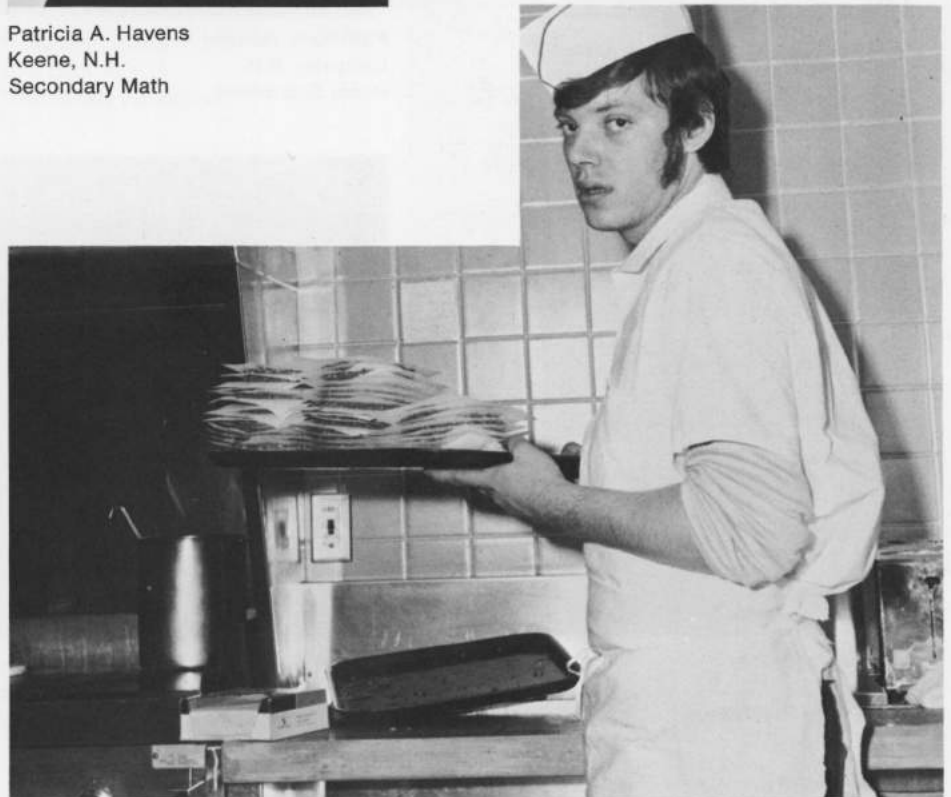
Roger D. Hartwell
Keene, N.H.
Liberal Arts Psychology



Patricia A. Havens
Keene, N.H.
Secondary Math

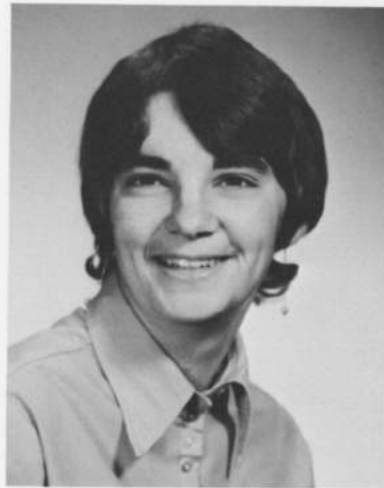


Ann Hayes
Manchester, N.H.
Elementary Education

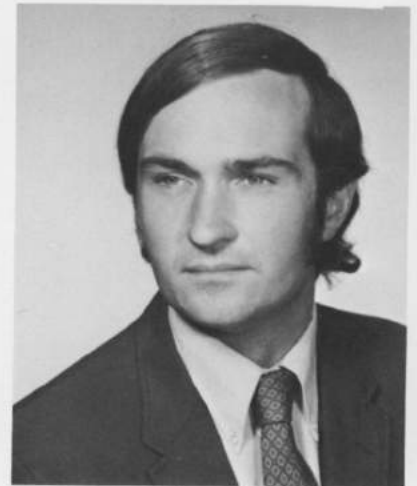




Mary Healy
Manchester, N.H.
Elementary Education



Elizabeth Hertzfeld
Amherst, Mass.
Elementary Education



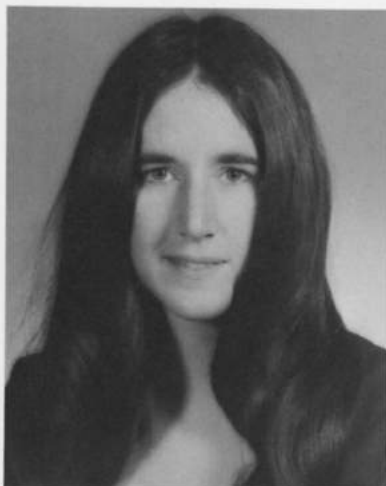
Edmund O. Howard
Keene, N.H.
Liberal Arts History



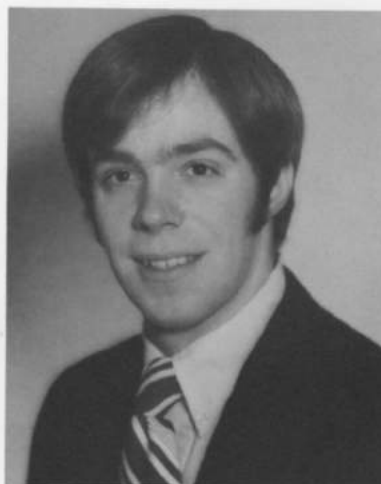
Patricia A. Howard
Lempster, N.H.
Home Economics



Brenda L. Howe
Nashua, N.H.
Home Economics



Hazell A. Ingoldbsy
Alstead, N.H.
Liberal Arts Psychology



Willis R. Ingram
Hanover, N.H.
Secondary History



Ruth H. Jache
Manchester, N.H.
Elementary Education



Peter Janosz, Jr.
Bedford, N.H.
Secondary Math



Barbara A. Johnson
Manchester, N.H.
Liberal Arts Psychology



Christine L. Johnson
Exeter, N.H.
Elementary Education



Pamela E. Jones
Chatham, N.Y.
Elementary Education



Deborah A. Jorbel
Bennington, N.H.
Home Economics



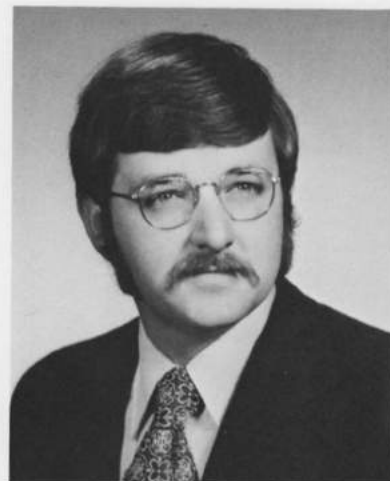
Norma J. Kawecki
Gill, Mass.
Secondary Physical Education



Patricia A. Keating
Holden, Mass.
Liberal Arts Psychology



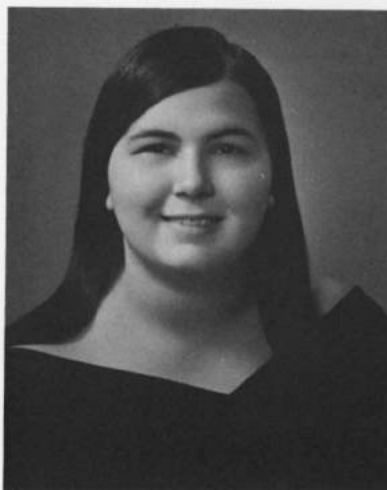
Kathleen A. Keegan
Franklin, N.H.
Elementary Education



Peter W. Kendall
Hudson, N.H.
Secondary History



Gary Kenney
Keene, N.H.
Technical Education Electronics



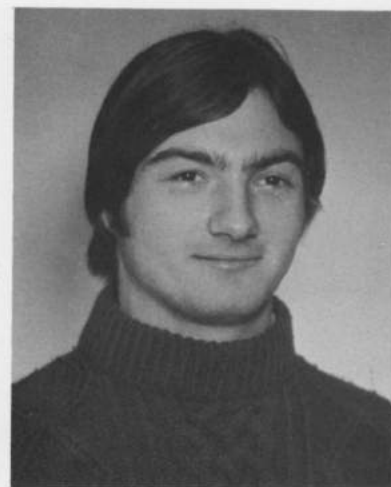
Kathleen L. Kesmetis
Manchester, N.H.
Elementary Education



Susan W. Kew
Lowell, Mass.
Elementary Education



Patricia A. Keyes
Keene, N.H.
Secondary English



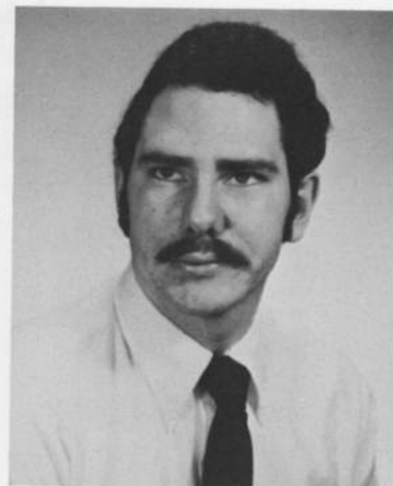
Kevin R. King
Peabody, Mass.
Liberal Arts Psychology



Jayne K. Koperstynski
Piscataway, N.J.
Secondary Math



Christine Kouletsis
Manchester, N.H.
Elementary Education



Geoffrey M. Kristl
Hillsboro, N.H.
Industrial Education



David S. Kyle
Keene, N.H.
Liberal Arts History



Dorothy A. Lacerda
Middleboro, Mass.
Elementary Education



Linda LaChance
Rochester, N.H.
Elementary Education



Wendy C. Lacheta
Manchester, N.H.
Elementary Education



Diane M. Lawson
Orange, Mass.
Elementary Education



Judith M. Layton
Sharon, Mass.
Secondary Physical Education



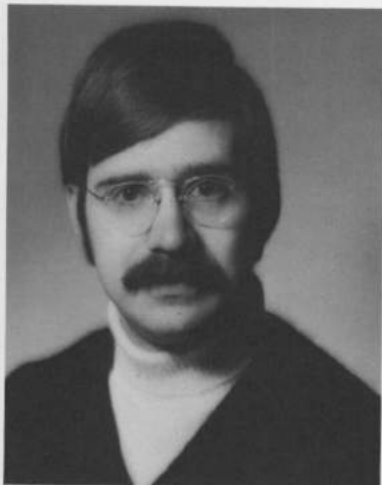
Gail M. LeBlanc
Manchester, N.H.
Secondary Foreign Languages



Sheila Lemos
Manchester, N.H.
Elementary Education



Linda R. Lennon
South Hadley, Mass.
Elementary Education



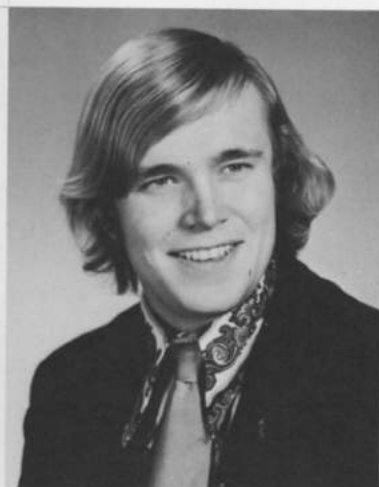
James N. Letendre
Penacook, N.H.
Liberal Arts English



Mary L. Letourneau
Keene, N.H.
Elementary Education



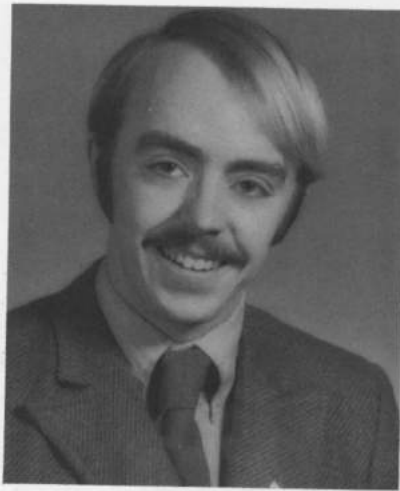
Karen Lindquist
East Hartford, Ct.
Elementary Education



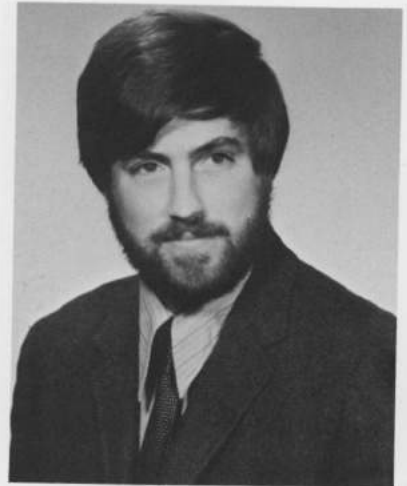
Thomas W. Liveston
Wells River, Vt.
Liberal Science Math



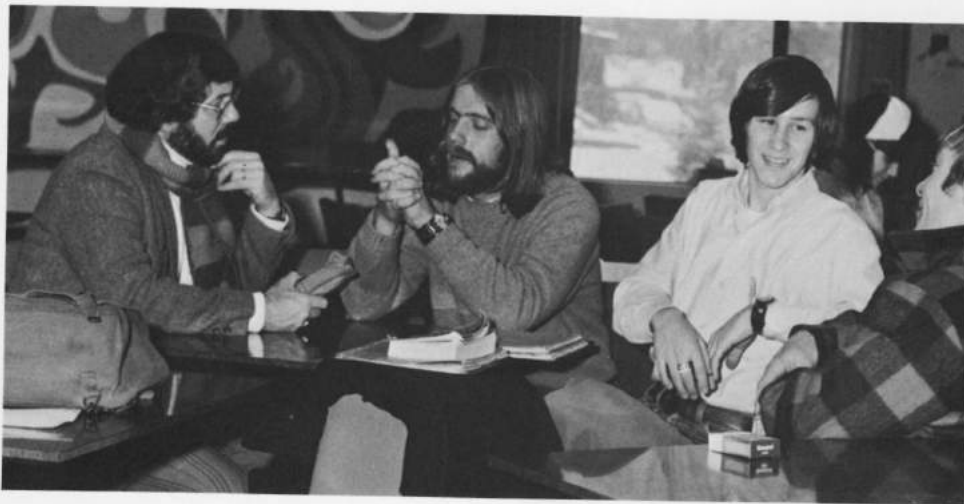
Colin R. Lyle
Jaffrey Center, N.H.
Liberal Arts History



Michael F. Maher
Hampden, Mass.
Liberal Arts History



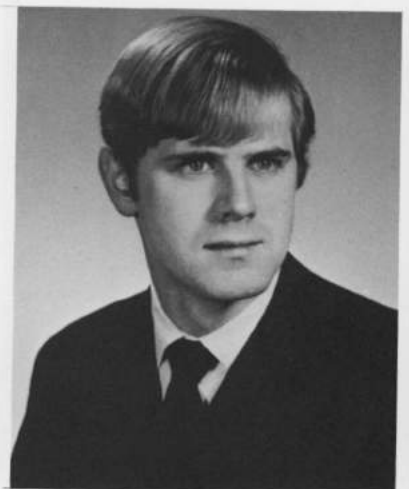
Martin F. Mahoney
Keene, N.H.
Elementary Education



Mary Pat Mangano
Rochester, N.Y.
Elementary Education



Susan F. Mangion
Foxboro, Mass.
Elementary Education



Janathan F. Manley
Milford, N.H.
Secondary Science



Virginia T. Marrotte
Troy, N.H.
Elementary Education



Jacqueline M. Martin
Hillsboro, N.H.
Elementary Education

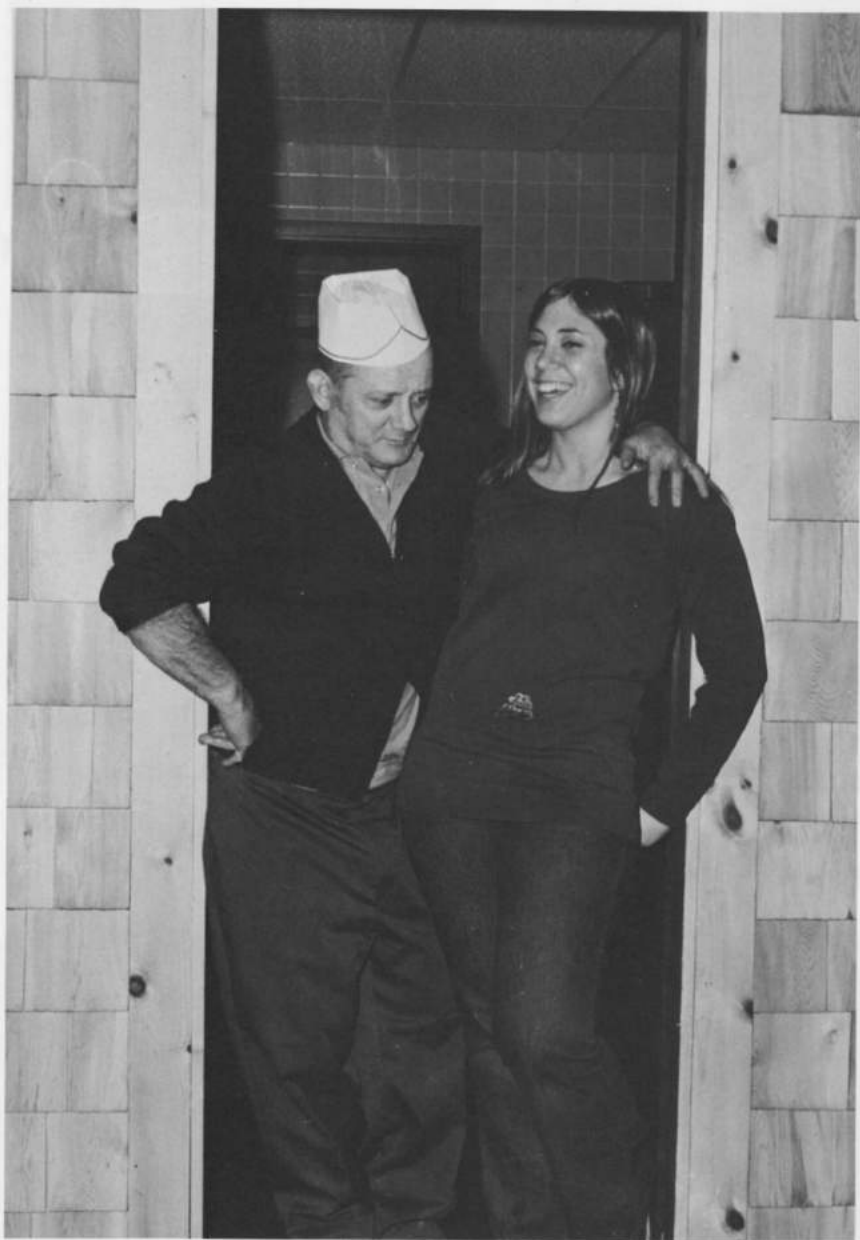


Pollyann Mataragas
Raymond, N.H.
Liberal Science Biology

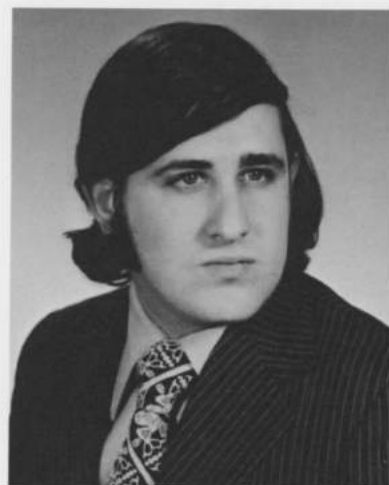


Michele A. Matthews
Keene, N.H.
Elementary Education





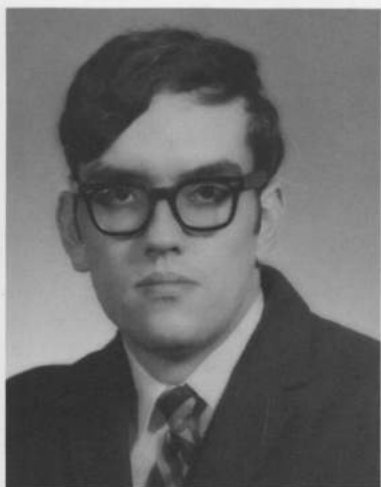
Beverly Mattson
Manchester, N.H.
Elementary Education



Charles V. Maturo
Manchester, N.H.
Secondary History



Margaret L. McAndrews
Northfield, Mass.
Elementary Education



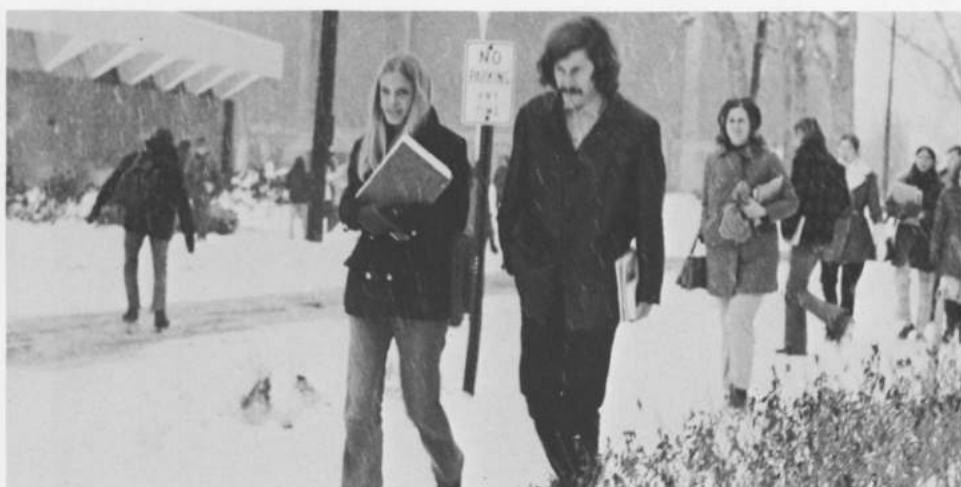
Ronald E. McGonis
Lebanon, N.H.
Secondary History



Kathryn McGregor
Lisbon, N.H.
Elementary Education



Kara L. McIntire
Reading, Mass.
Elementary Education



Judy A. McKinley
West Canaan, N.H.
Home Economics



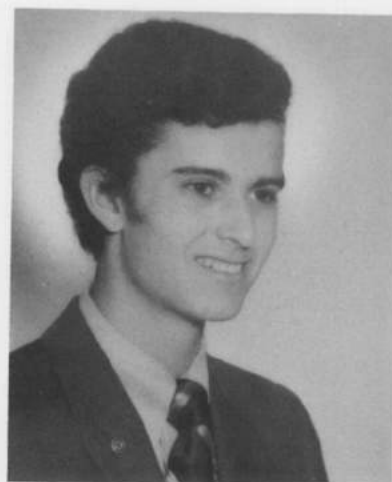
Linda A. McLaughlin
Manchester, N.H.
Elementary Education



Maureen F. McLaughlin
Barrington, R.I.
Elementary Education



Cynthia C. McLean
Burlington, Vt.
Secondary History



Paul L. Mellion
West Hartford, Ct.
Secondary Social Science



William E. Merisotis
Manchester, N.H.
Industrial Education



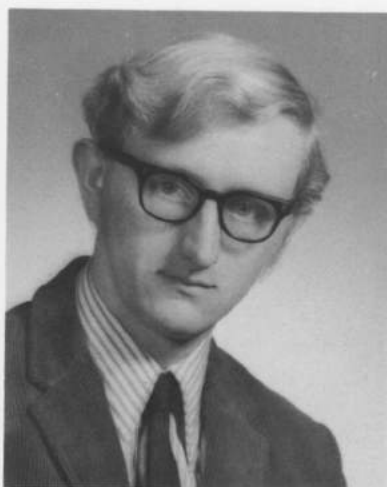
Armand C. Michaud
Keene, N.H.
Secondary History



Marylu Miles
Milford, N.H.
Secondary Physical Education



Elizabeth Misiaszek
Wilbraham, Mass.
Secondary Physical Education

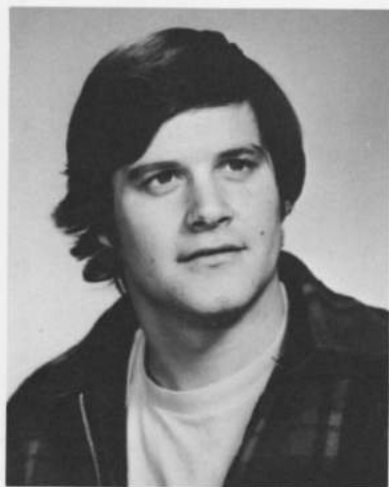


Kenneth E. Mitchell
Woodsville, N.H.
Industrial Education

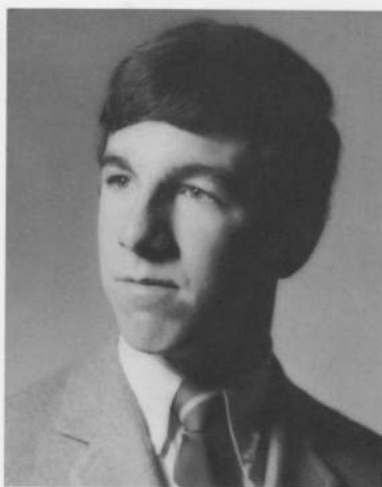


Marilynn J. Moody
Lancaster, N.H.
Elementary Education

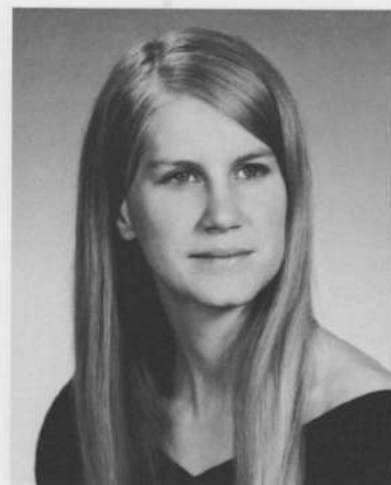




Richard M. Morini
Mahopac, N.Y.
Industrial Education



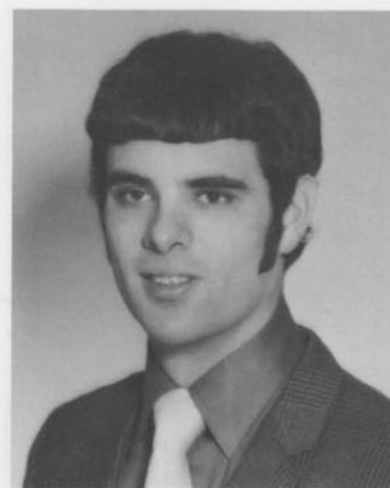
Raymond F. Morris, Jr.
East Hartford, Ct.
Secondary History



Linda S. Morse
Westmoreland, N.H.
Secondary Foreign Languages



Suzanne A. Mousseau
Hampton, N.H.
Elementary Education



Kevin R. Mullavey
Portsmouth, N.H.
Secondary History



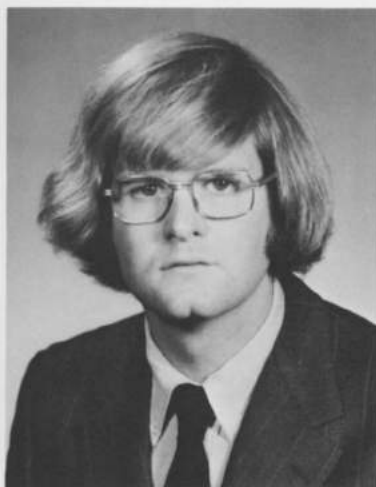
Frances E. Murphy
Keene, N.H.
Elementary Education



Leonard J. Murphy
Manchester, N.H.
Liberal Arts History



Paula J. Newton
Manchester, N.H.
Elementary Education



Brian T. Norton
Manchester, N.H.
Liberal Arts History



Cheryl J. Nutting
Milford, N.H.
Elementary Education



John and Anita O'Brien
Liberal Arts Psychology
Keene, N.H.



Christine Olshewsky
Nashua, N.H.
Elementary Education



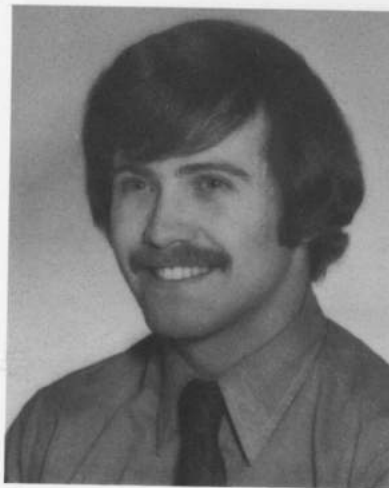
Judith A. O'Neill
Brattleboro, Vt.
Liberal Arts English



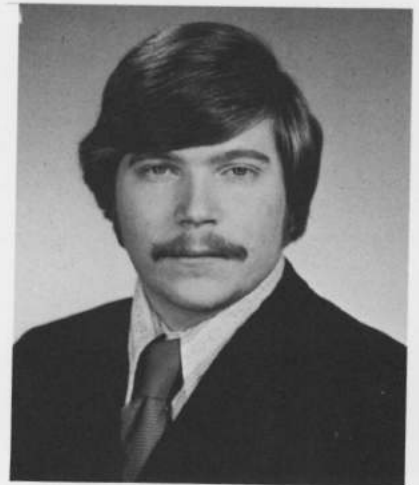
Mary Ann Ozdarski
Greenfield, Mass.
Secondary Physical Education



William E. Papajohn
Manchester, N.H.
Secondary History



Stephen J. Parker
Slough, England
Secondary Physical Education



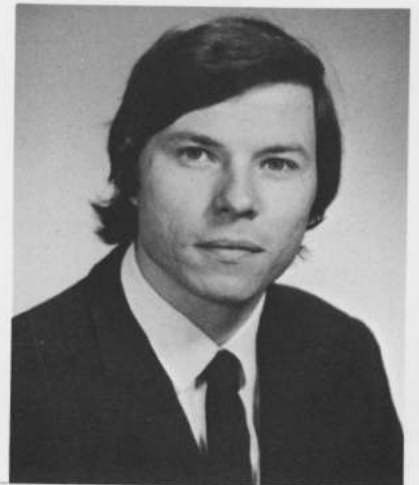
Gary P. Parnham
Portsmouth, N.H.
Secondary Biology



Patricia A. Payne
Keene, N.H.
Elementary Education



Pamela M. Pellerin
North Adams, Mass.
Secondary Physical Education



Kenneth S. Piotrowski
Manchester, N.H.
Liberal Arts Psychology



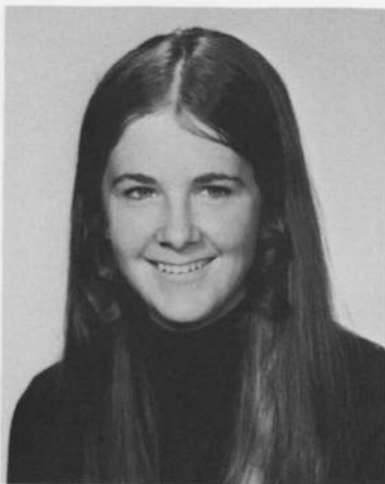
Judy A. Potter
Greenfield, Mass.
Secondary Social Science



Brenda L. Pouliot
Keene, N.H.
Elementary Education



Elizabeth Powers
Brattleboro, Vt.
Home Economics



Sheila Prouty
Secondary Math



Lucy A. Provencher
Manchester, N.H.
Elementary Education



Bonnie A. Ratcliffe
Rochester, N.H.
Elementary Education



Stephen Ratcliffe
Rochester, N.H.
Liberal Arts History



Chris A. Raudonis
Keene, N.H.
Secondary Social Science



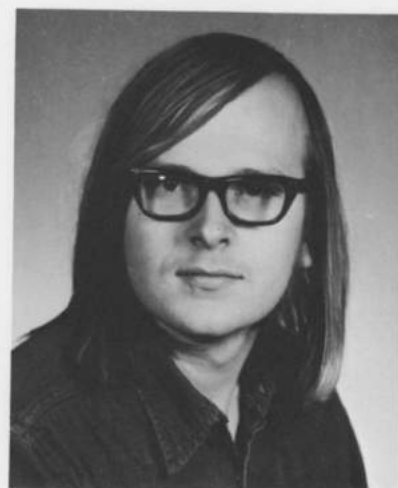
Karen E. Raudonis
Keene, N.H.
Elementary Education



Robert R. Reardon
Rye, N.H.
Liberal Arts History



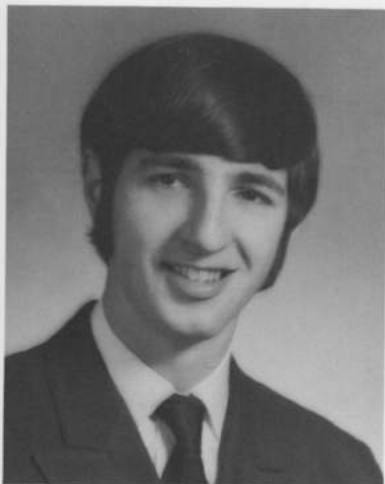
Ann E. Reed
Arlington, Mass.
Home Economics



John T. Rice
Wilmington, Vt.
Liberal Arts English



Susan E. Robinson
Manchester, N.H.
Secondary History



Robin Rockwell
Keene, N.H.
Secondary History



Kathleen A. Rondeau
Palmer, Mass.
Elementary Education



Gregory and Robin Root
Claremont, N.H.
Elementary Education



Shelley S. Rouillard
Glens Falls, N.Y.
Home Economics



Cynthia A. Roy
Ashuelot, N.H.
Liberal Arts History



Diana L. Roy
Winchester, N.H.
Elementary Education



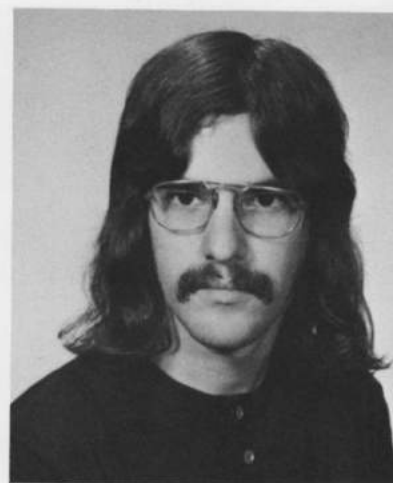
Kathryn O. Royce
Charlestown, N.H.
Secondary History



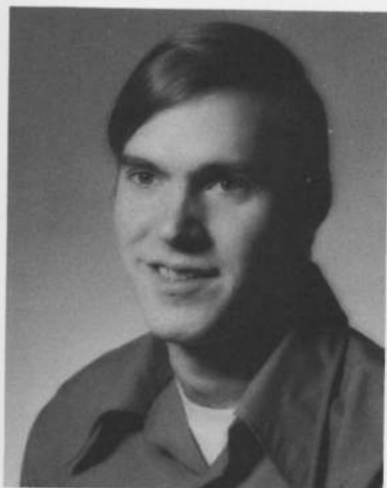
Shari J. Russell
Keene, N.H.
Elementary Education



Donna L. Rys
Ware, Mass.
Secondary Foreign Languages



James E. Salvatore
Exeter, N.H.
Industrial Education



Donald A. Sargent
Ryegate, Vt.
Industrial Education



Douglas A. Sauer
Winchester, N.H.
Liberal Arts Psychology



Gail P. Schnell
West Hartford, Ct.
Elementary Education

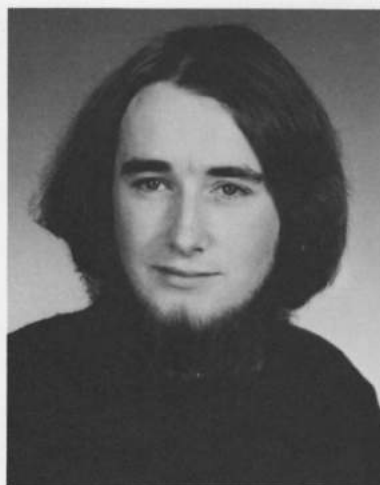


Patricia M. Schibi
Lynbrook, N.Y.
Elementary Education

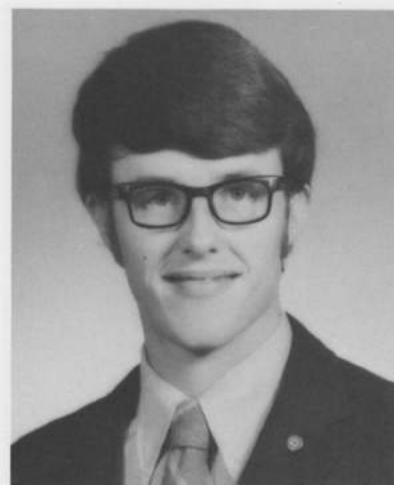




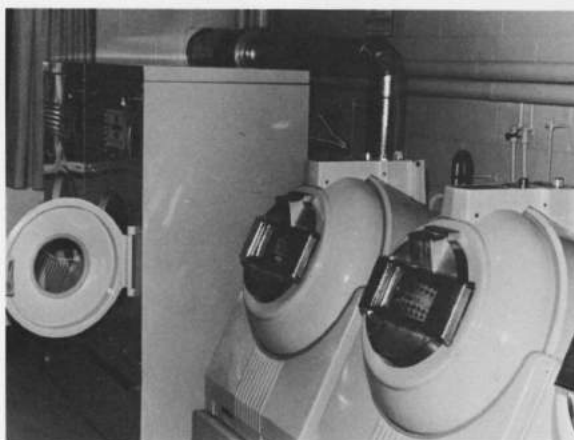
Linda J. Schofield
Nashua, N.H.
Elementary Education



Steven J. Sharps
Laconia, N.H.
Industrial Education



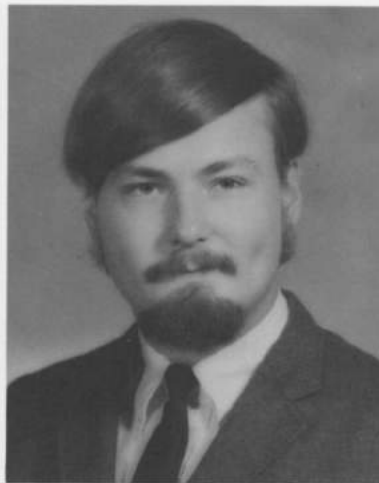
Charles Sheaff
Keene, N.H.
Industrial Education



Frances Siekaniec
Manchester, N.H.
Secondary Physical Education



Betty L. Smith
Troy, N.H.
Elementary Education



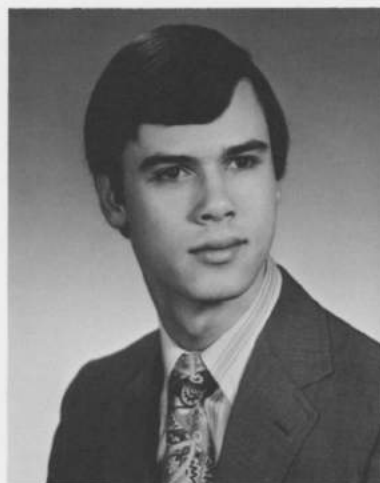
Peter N. Smith
Keene, N.H.
Liberal Arts Psychology



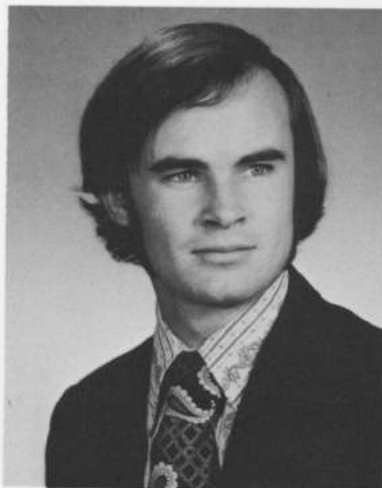
Peter H. Smithers
South Amboy, N.J.
Secondary Social Science



Linda J. Snyder
Elnora, N.Y.
Elementary Education



Philip J. Soares
Manchester, N.H.
Liberal Arts Psychology



Mark G. Sowa
Manchester, N.H.
Secondary Social Science



William T. Staples
Portsmouth, N.H.
Secondary History



Cynthia J. Stevens
Derry, N.H.
Elementary Education



Maurine St. Laurent
Keene, N.H.
Elementary Education



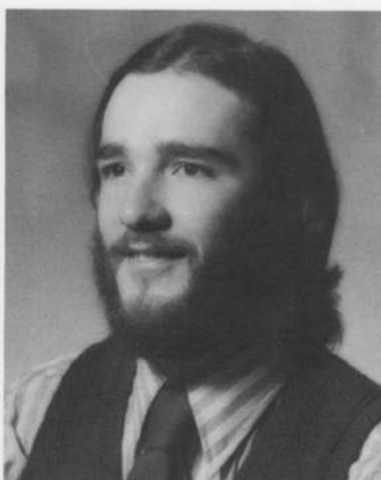
John M. Stokel
Portsmouth, N.H.
Secondary Math



Barbara Sucharzewski
Claremont, N.H.
Secondary French



Diane Sullivan
Manchester, N.H.
Elementary Education

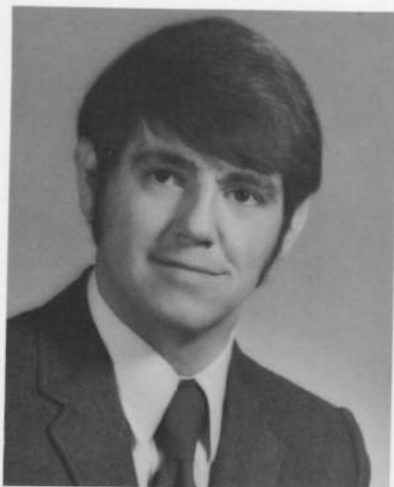


Richard H. Swain
Norwalk, Ct.
Secondary English

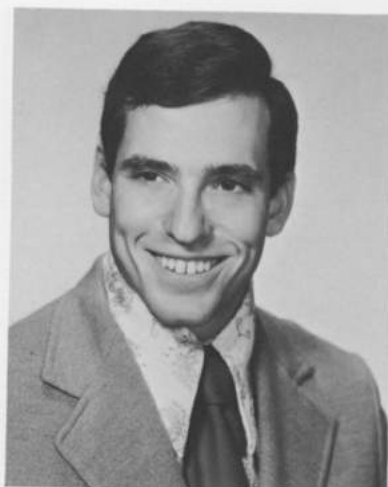


Deborah A. Swenson
Penacook, N.H.
Elementary Education





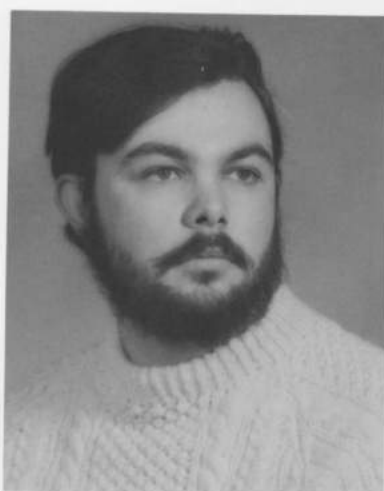
William T. Symonds
Marlboro, N.H.
Liberal Arts History



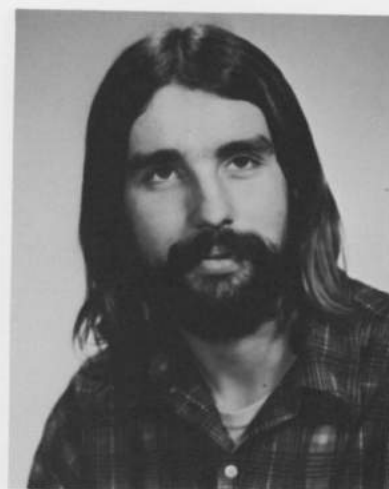
Michael J. Szot
Mamaroneck, N.Y.
Industrial Education



Mary Jane Talarico
Danbury, Ct.
Secondary Physical Education



Charles F. Taylor
Keene, N.H.
Liberal Science Math



Ronald E. Taylor
Pease AFB, N.H.
Liberal Arts History



Susan J. Thomas
Canton, Mass.
Home Economics



Carolyn Tiedman
Hinsdale, N.H.
Secondary English



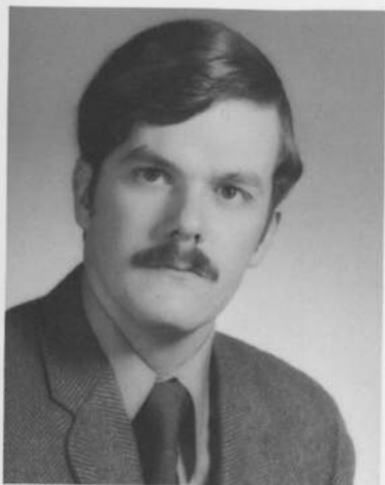
Marguerite L. Timmons
Manchester, Ct.
Elementary Education



Rita M. Timpanaro
Deer Park, N.Y.
Liberal Arts Sociology



Karen A. Troy
Springfield, Mass.
Elementary Education



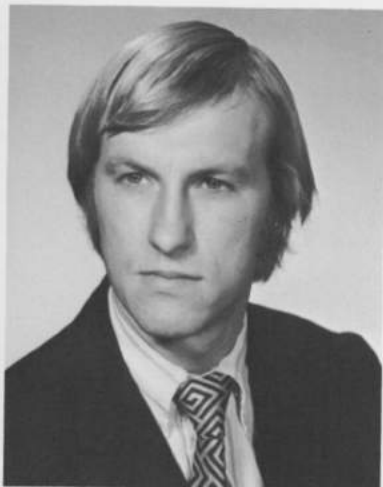
Charles Vaillancourt
Keene, N.H.
Secondary Foreign Languages



Mary Lou Vitale
Topsfield, Mass.
Elementary Education



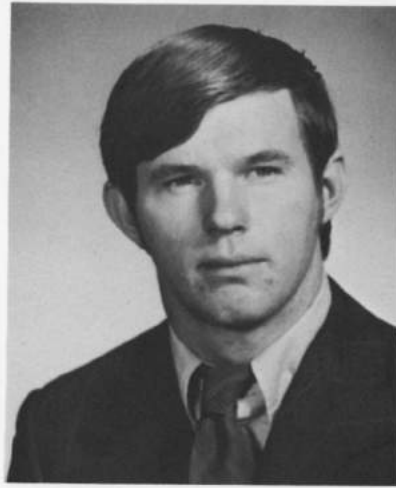
Joann E. Walker
Keene, N.H.
Elementary Education



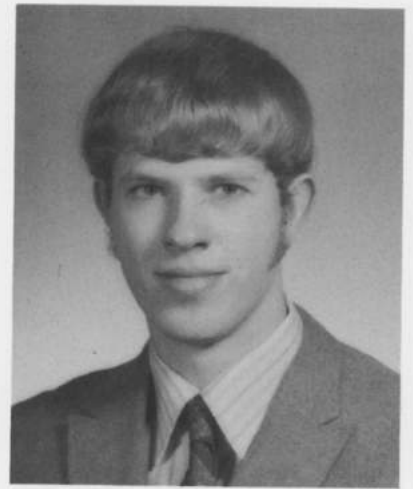
Wayne G. Walker
Keene, N.H.
Secondary History



Marcia L. Waters
Oragne, Mass.
Secondary Physical Education



Duane E. Webster
Danville, Vt.
Industrial Education



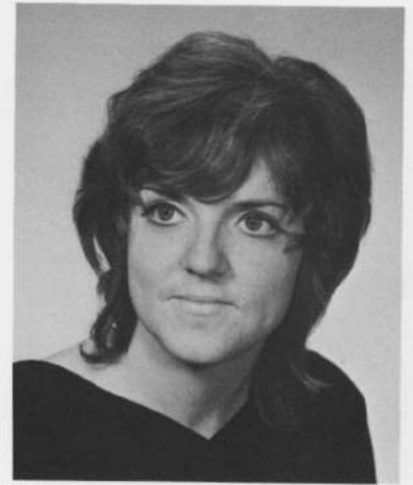
David A. Westover
Chatham, N.Y.
Liberal Arts Psychology



Elizabeth A. Whelpley
Athol, Mass.
Secondary English



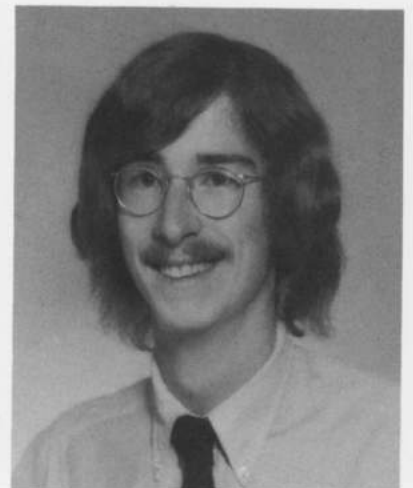
Joseph L. Whiten
Keene, N.H.
Secondary History



Margaret L. Winters
Longmeadow, Mass.
Home Economics



Jane A. Wood
Plainville, Ct.
Home Economics



David G. Worster
Hopkinton, N.H.
Secondary Social Science



William H. Young
Marlboro, N.H.
Elementary Education



Heather Yurgeles
Goshen, N.H.
Secondary Social Science



Linda L. Ziter
Littleton, N.H.
Elementary Education



Nancy S. Zrate
Ware, Mass.
Elementary Education



BASEBALL



This season's baseball team captained by Henry Beecher, a senior second baseman, won four and lost eleven. Winning pitchers were Brad Storer and James Drew who won one game and Dennis Basingthwaite who won two. The leading hitters were Mike Aumond at .375 plus Ron Pierson who averaged .300 and led the team with stolen bases.

KSC		Opponent
0	Plymouth State College	1
2	Plymouth State College	1
8	Rhode Island College	3
0	Rhode Island College	3
11	Johnson State College	2
1	Gorham State College	2
1	Gorham State College	2
5	Lyndon State College	6
6	Lyndon State College	8
1	New Hampshire College	2
2	New Hampshire College	0
1	Castleton State	9
1	Castleton State	5
2	Eastern Connecticut	18
2	Eastern Connecticut	8



CROSS COUNTRY

Coach Bob Taft's harriers had a tough act to follow in 1971. The 1970 team had rolled up a fine 53-8 record and had finished second in both the NESCAC and NAIA finals. The team was more than ready to improve and responded with a 57-5 mark. The team was carried all season long by a strong and steady five man tandem of Glenn Braunhardt, Keith Martell, Dave Guglielmo, Dennis Anderson and Captain Pete Hanrahan.

The squad again took second in the NAIA finals. Boston State edged the Owls by a narrow 53-56 margin. Dennis Anderson had left the team and the Owls fell one man short of winning the title. Braunhardt, Guglielmo and Martell took fifth, sixth, and ninth in that meet to make All-NAIA while Hanrahan placed twelfth.



TRACK

The track season ended on the high side for Keene State with three wins and two losses, plus second place in District #32 NAIA and third in the NESCAC.

The team's conditioning and dedication resulted in fourteen all-time KSC records. John Maxwell won the KSCAI award while David Ames won three trophies for most points scored in running events, field events and most total points.





Bottom left to right. Nancy Balla, Karolyn Carpenter, co-captain Jean Andrew, Patricia Michaud, Priscilla Jean, Margret Gay, manager; *second row.* co-captain Elizabeth Misiasyek, Christine Lef-

ferts, Marge Nostrand, Stephanie Nostrand, Judy LaCasse, Karen Cushing and Coach Karen Booth.

KSC

36	S. Connecticut
43	Springfield
35	Plymouth
59	Worcester State
44	Univ. of Mass.
54	Fitchburg
38	U.N.H.
66	Plymouth
44	Bridgewater
50	Mt. Holyoke

Opponent

71
33
27
56
31
41
45
42
62
34

WOMEN'S BASKETBALL

The team was invited to the New England Women's Basketball Tournament, but was again bedeviled in the second round by Southern Connecticut who eventually won the tournament.

Individual honors and trophy awards for over-all high achievement in terms of sportsmanship and performance went to Betty Misiasyek and Stephanie Nostrand. Co-captain Betty Misasyek had a 13.6 scoring average and consistently proved very effective on rebounds for a 7.6 seasonal average. Stephanie Nostrand, the six foot center, also pulled down an average of 12 rebounds and maintained a 9.8 record. Recipient of the Highest Scoring Average Trophy was Junior, Nancy Balla, who threatened the opponent with her devastating set shot. She scored 15.5 per game.

Judy LaCasse, a freshman, received the Rookie of The Year Award for her high achievements in rebounding and demonstrated desire for excellence.



left to right, first row. Debbie Parker, Betty Misiayik, Nancy Balla, Jean Andrew, Sally Widerstrom, Joy Eck, Sheila Conway, Sylvia Child, coach Sherry Bovinet. left to right, back row. Nancy Blaisdell, Karen Cushing, Priscilla Jean, Marlyn Hurley, Frannie Addorrisio, Jill King, Kathy Farley, Cheryl Fish, Sue Novins, Nancy Rysnik, Barbara Herb, Julie Schaeffer, manager Kathy Moreau

WOMEN'S SOFTBALL

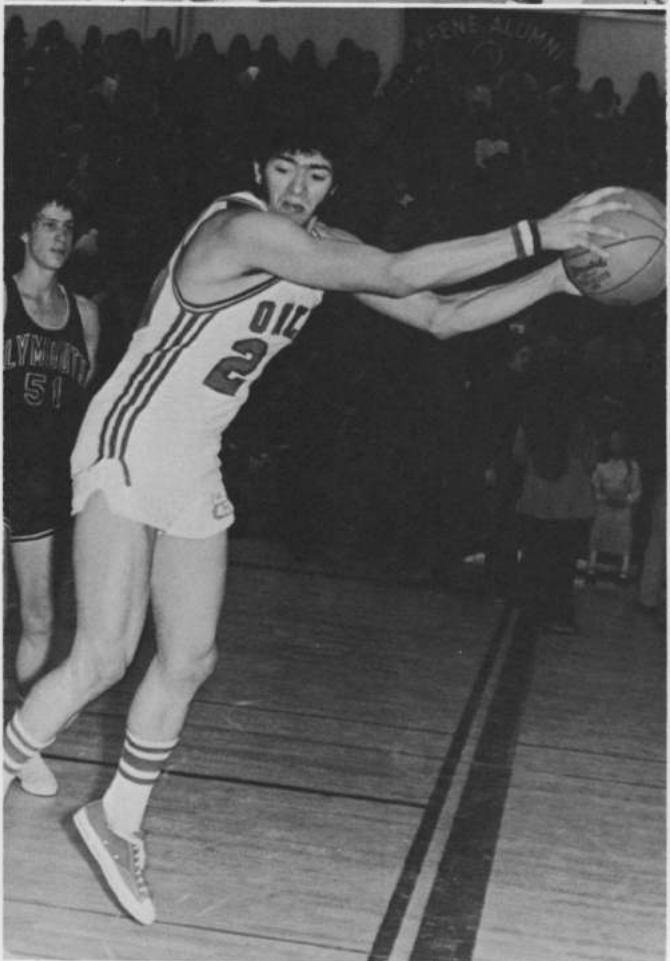
BASKETBALL

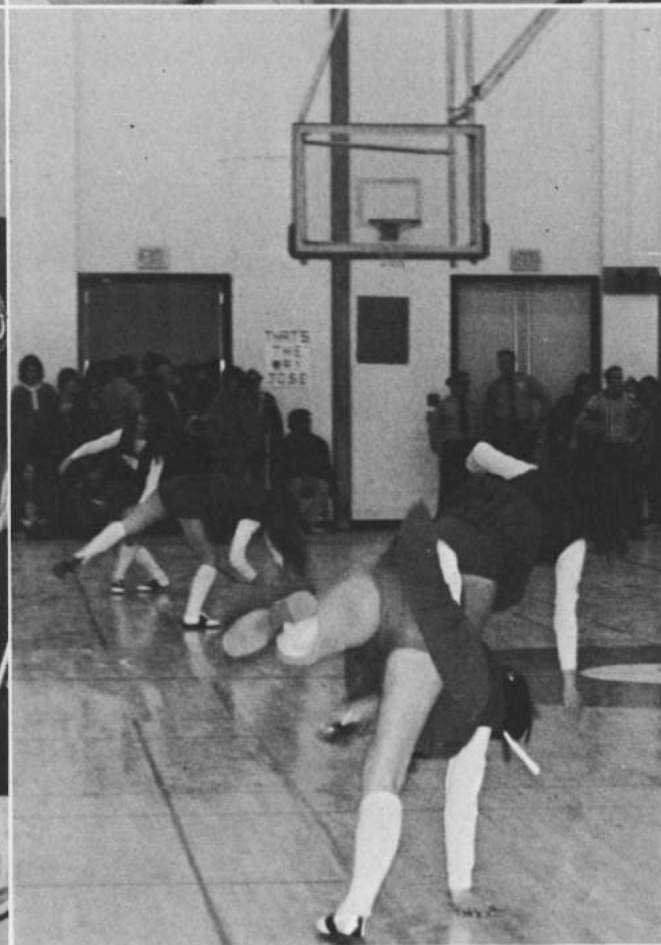
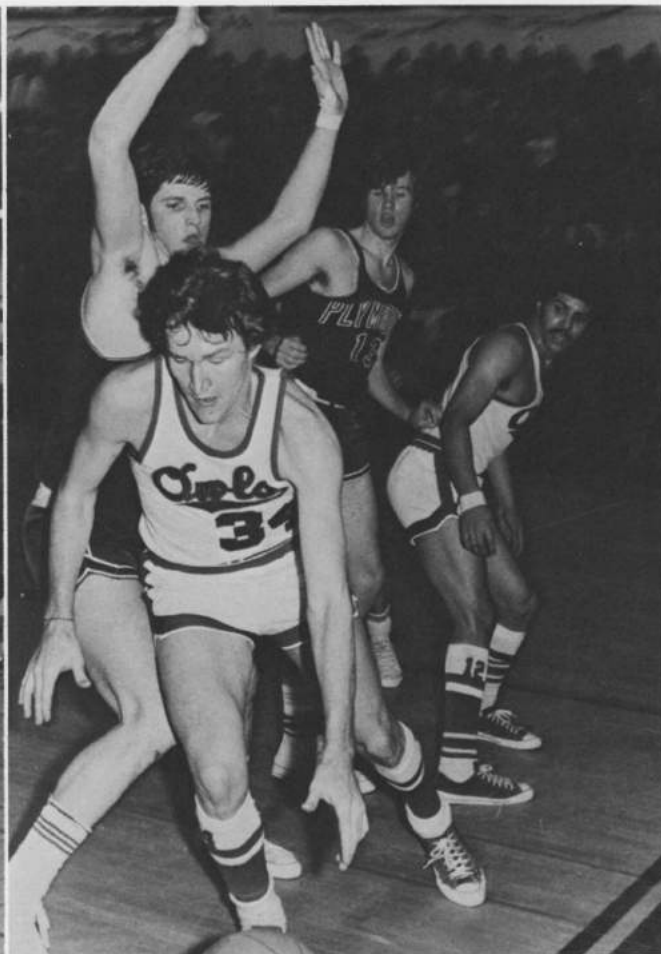
The Basketball Owls enjoyed a fine season in 1971-1972, posting an overall record of 19-8. Led by junior college transfer, Joe DeCausey and Captain Kevin O'Leary, the Owls rolled to a second place NESCAC finish and a berth in the NAIA tourney.

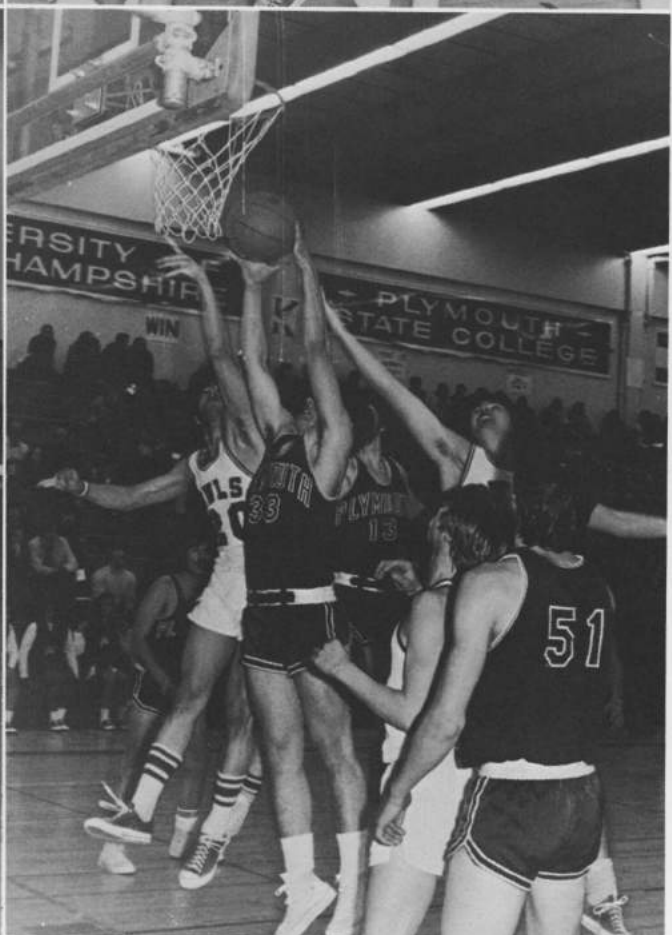
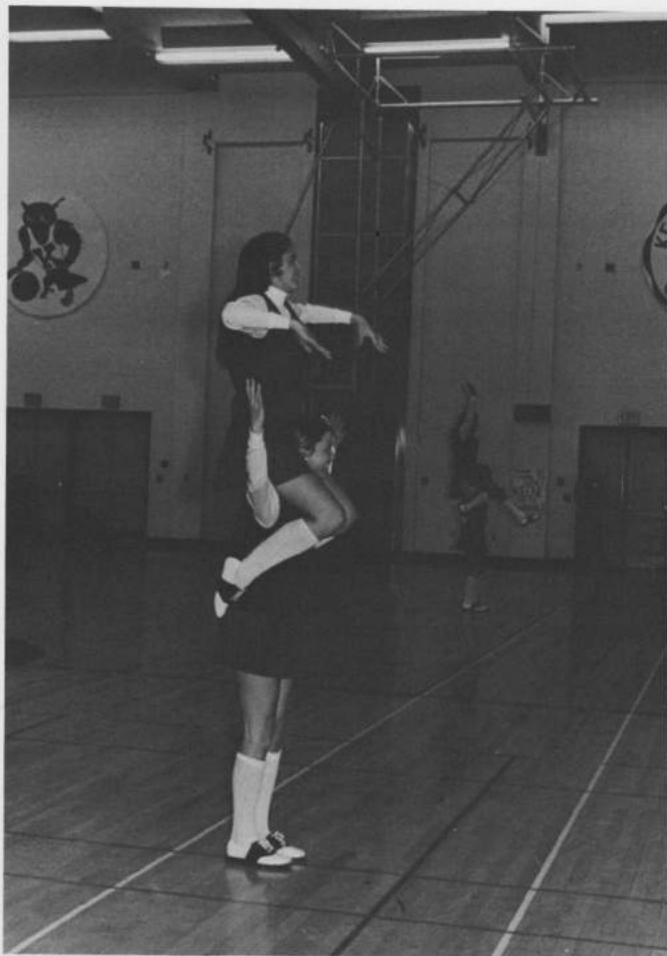
DeCausey's all-around offensive performance highlighted the season for the Owls. Center DeWitt Summers, at 6-8 was impressive also. He averaged in double figures in both the scoring and rebounding departments. O'Leary led the team from his guard position while putting in fifteen points per game.

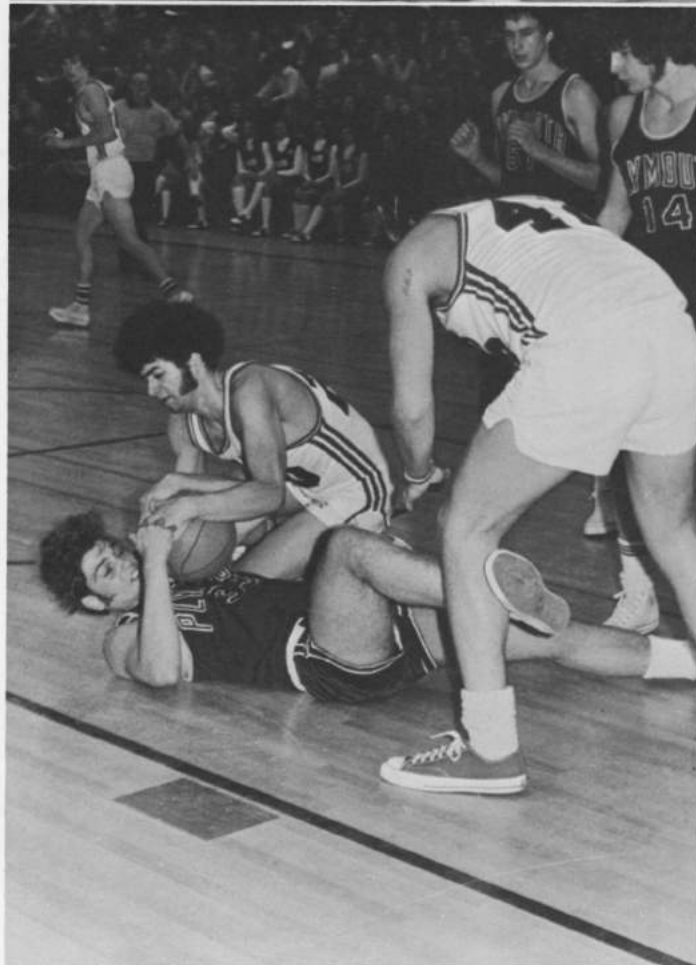
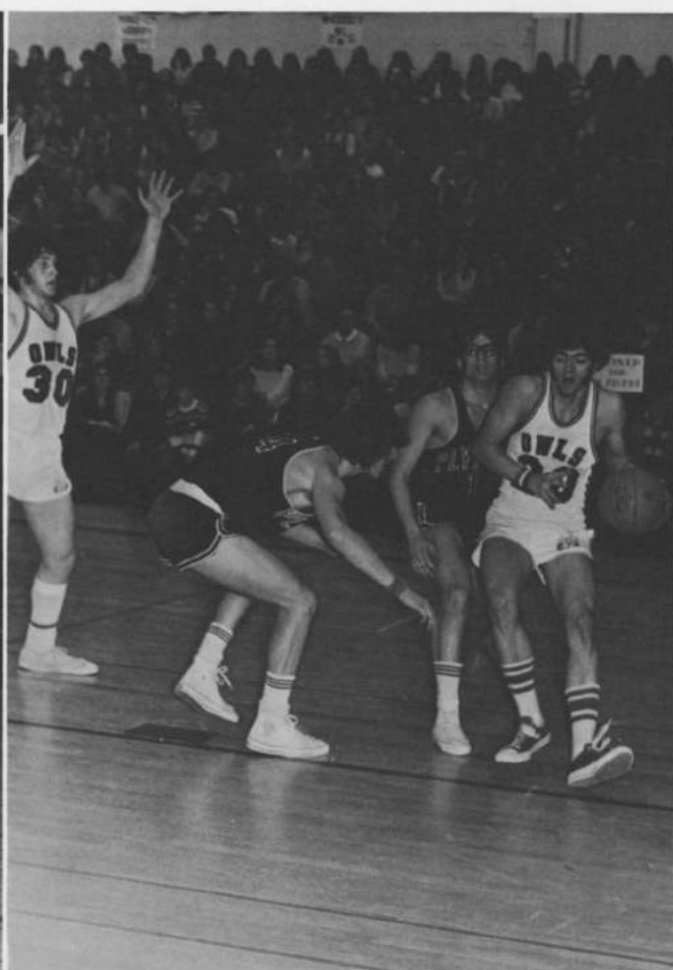
At Spaulding the level of basketball competition was high in 1971-1972. With the entire squad returning, the outlook for 1972-1973 is extremely bright.

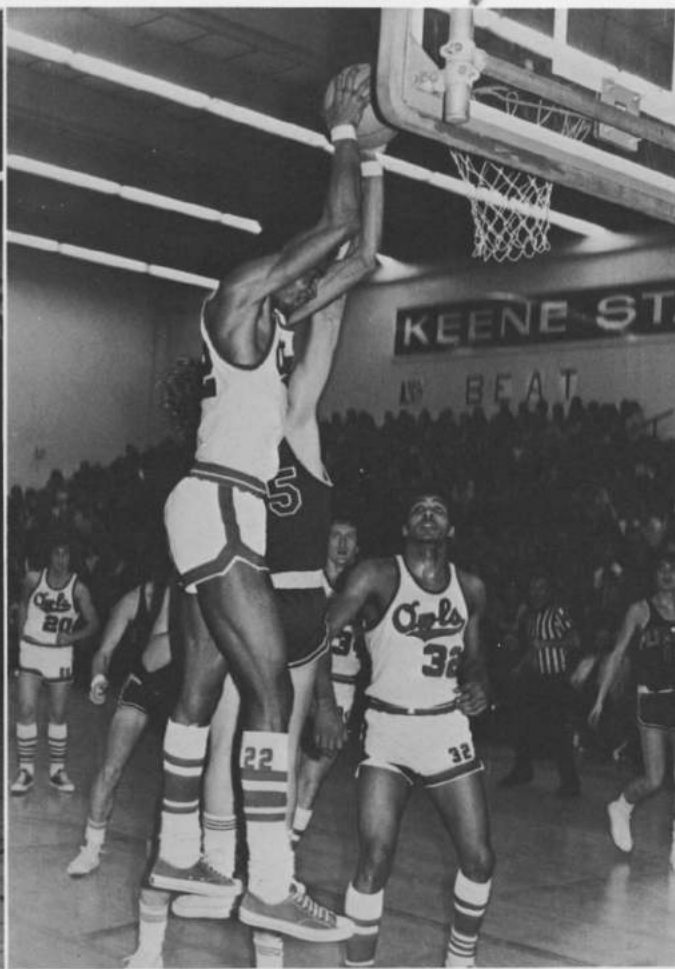
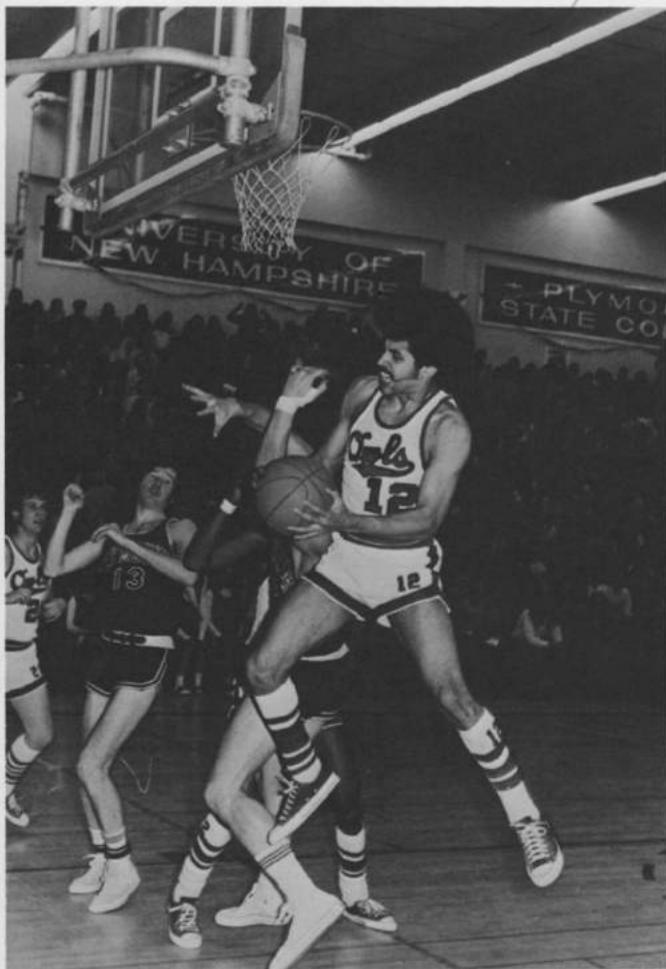












WOMEN'S FIELD HOCKEY



left to right, kneeling. Pat O'Brien, Karen Cushing, Karen Miller, captain Chris Galgano, Sue Lamontagne, Karen Sielke; *left to right, standing.* Coach Daisy Herndon, Peggy Gay, Sue Navin, Norma Ka-

wecki, Nancy Cochrane, Linda Schrempf, Sue Lockwood, Pat Michaud, Susan Koerber.

KSC

1	U.N.H.
3	Castleton State College
1	Bridgewater State College
0	Univ. of Massachusetts
2	Springfield College
3	Fitchburg State College
0	Plymouth State College
1	Wheaton College
1	Smith College
7	Salem State College

Opponent

9
1
3
3
1
0
3
0
3
0

The Varsity Field Hockey team sported an impressive 5-5 record during their second competitive year. Playing against larger schools with long histories of competition, the K.S.C. sticklers played aggressive ball.

The highlight of the season was the victory over Springfield College in which all the potential of the young Keene team was exhibited. In order to achieve an even higher skill level, twenty-two of the team's thirty players will attend a national field hockey camp during the summer.

JUNIOR VARSITY FIELD HOCKEY



left to right, sitting. Norma Nutting, Pris Jean, Kathy Mullahy, Kathy Walker, Sheila Prouty, Marilyn Hurley. *left to right, kneeling.* manager Carol York, Frannie Addorissio, Eileen Novelanno, Andra Jatinicks, Jill King, Nancy Blaisdell, Kathy Moreau, Julie Schaefer, *left to right, standing.* co-captain Nancy Finick, Ria Lorgo, Linda Stelle, Donna Bennett, Barbara Herb, co-captain Jean Murphy.

KSC

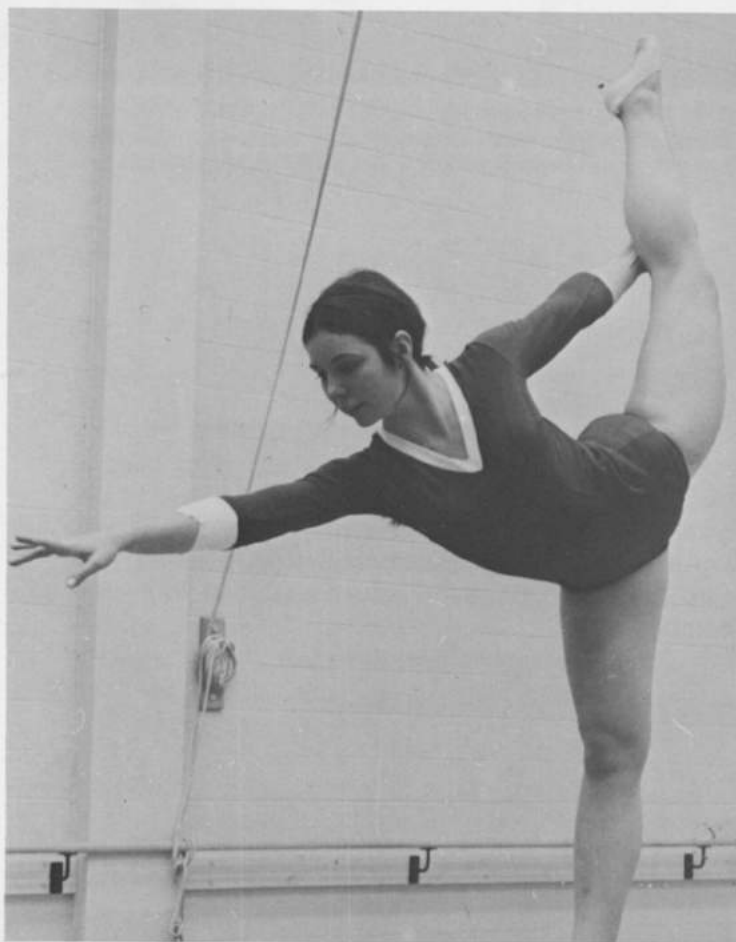
3	North Adams State College
0	Bridgewater State
0	Univ. of Massachusetts
3	Mt. Ida Junior College
3	Dean Junior College
1	Springfield

Opponent

1
0
2
0
1
3

With the leadership of coaches Mrs. Nancy Hinckley and Ms. Cathi Savoie and the outstanding play of four returning starters, the Junior Varsity Field Hockey team played a 3-2-1 season. Affirming the opportunity to play on a competitive level to all who were interested, the J.V. squad included four new members.

WOMEN'S GYMNASTICS TEAM



left to right, front row. Brenda Sailes, Sharyl Roberts, MaryLou Moscaritalo, Janet Corrigan, Elaine Royman, Jill Diesinger, Janice Souya. left to right, back row. Lori Bigelow, Jean Vaida, Judy Farsburg, Diane Teata, Patti Congdon, Joan Waskewicy, coach Sherry Bovinet.

Under the graceful direction of Sherry Bovinet the 1971-72 Women's Gymnastics team won six and lost three plus placed third in the Tri-State Gymnastics Meet.

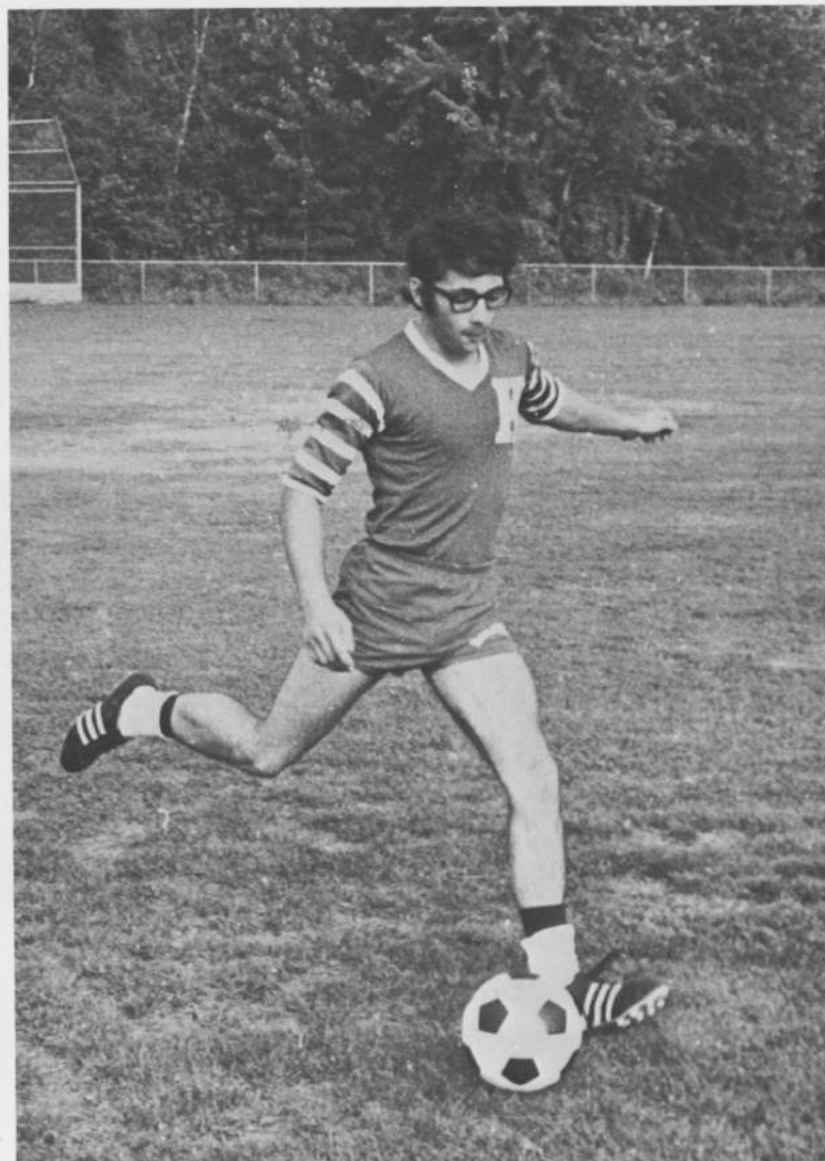
SOCCER

Coach Ron Butcher's 1971 Soccer squad was the finest in the history of Keene State College. The team lost only twice all year, first in an upset by Plymouth and then to Quincy College, the team that eventually won the national NAIA championship.

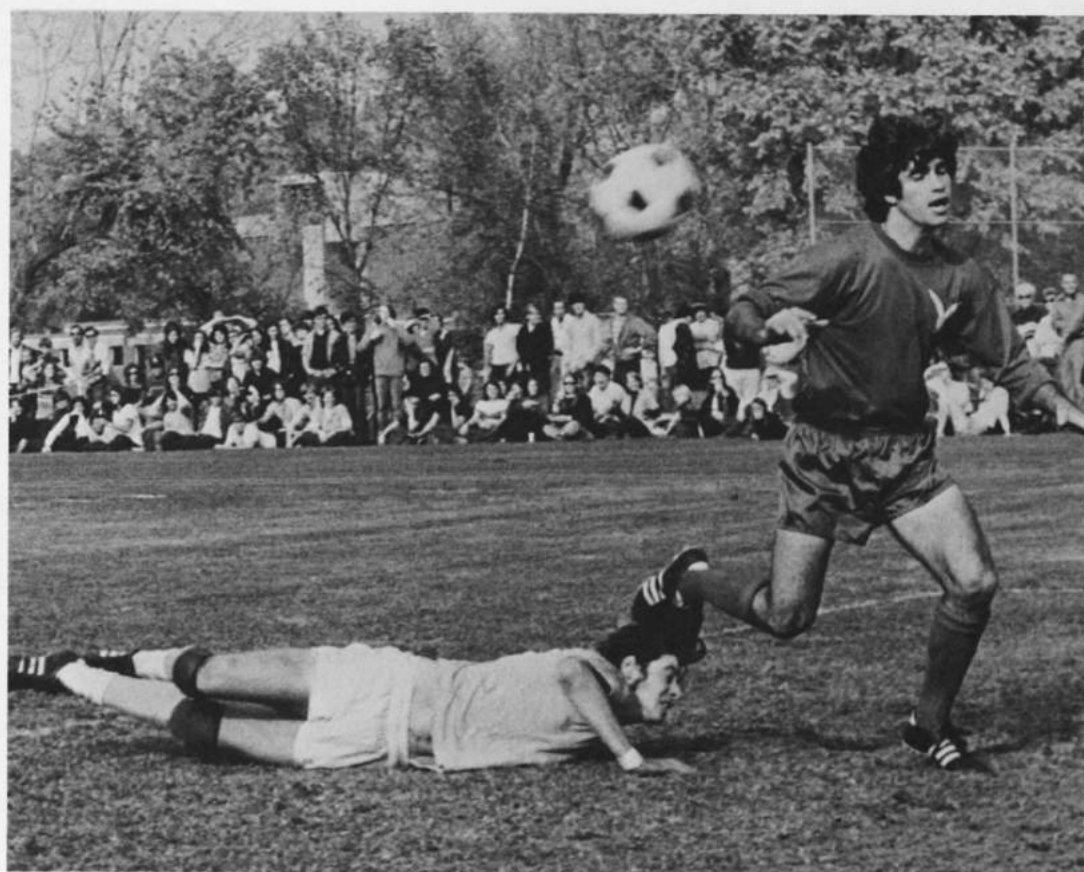
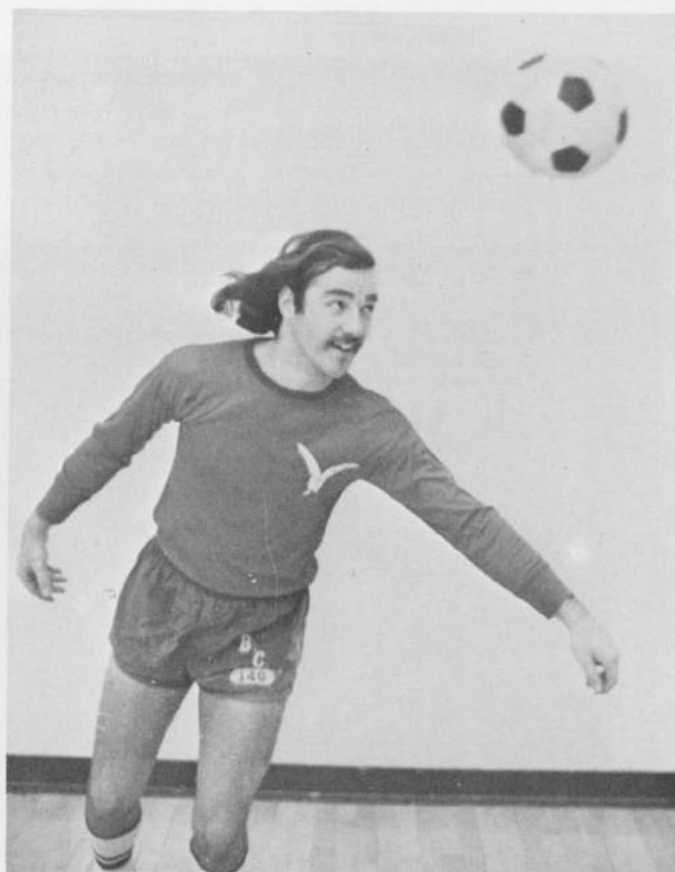
The team was sparked by Rit Swain and Captain Steve Parker, both seniors. Swain set an all time career record at KSC by adding Twenty-six goals to his previous total of thirty-six. Freshman Mickey Rooney

and Graham Jones joined Parker on the All-New England NAIA squad. The Owl booters won their first NAIA New England Championship and thus earned the right to compete in the eight team national finals at Dunn, North Carolina. The Owls finished in a tie for fifth at Dunn.

Losing only two players from a championship team, the Owls look forward with optimism to 1972.



WOMEN'S GYMNASIUMS TEAM



WOMEN'S SPRING VARSITY TENNIS



left to right, kneeling. Kathy Mullahy, Debbie Fenney, Gay Ben-
shimol, Karen Sielke. *left to right, standing.* Susan Koerber, Pat
Michaud, Janet Lawson, Karen Miller, Jean Murphy, coach Daisy
Herndon.

KSC

7	Fitchburg State College
2	Salem State College
6	Concord High School
3	Univ. of Massachusetts
5	Mt. Ida Junior College
4	Springfield College
5	Dean Junior College
5	Emmanuel College
3	Worcester State College

Opponent

2
3
3
5
0
3
0
0
2

Taking full advantage of the New England spring, the KSC women netters fought to an outstanding 7-2 record this season. An even more impressive fact was that KSC won thirty-nine out of the fifty-seven total matches played. The superior play can be traced to the pre-season conditioning and training which began on the first of February. The result is an invitation to The Eastern Collegiate Tennis Tournament to be held in September.

KRONICLE

Bob Ransom, Editor
Sheila Lemos, Managing Editor
Debbi Davis, Seniors

SECTION EDITORS

Organizations

Judy Carlson
Karen Sikoski
Betty Smith
Donna Wescott

Seniors

Karen Browing
Pam Carron

Faculty

Pam Jones
Kathy Rondeau

Sports

Charlene Conway
Marilyn Moody

Photography

Martin Mahoney
Jason F. Crook
Marty Gingras
B. F. Hebert
Hackwell
Tom Gino
Nate Carey

Fraternities

Judy Drake

Artwork

Pat Gilmartin
Darlene Ayotte

Stevens Studios



Complete Photographic
Service

Concord, N. H.