

KNS

THE KRONICLE
YEAR BOOK
1932



VOLUME TWELVE

Published by
THE STUDENTS OF
THE KEENE NORMAL SCHOOL
KEENE, NEW HAMPSHIRE

LD
2750
K94
K7
1932
C1



Dedication

TO no one could this Kronicle Year Book be more fittingly dedicated than to Roy A. Sullivan. His untiring efforts on the behalf of Keene Normal School have been a potent factor in making our work successful.

EDITORIAL BOARD




Kronicle Board

Back row: Alice Upton, Helen Spalding, Pauline Roby, Edna Johnson, Virginia Park, Ruth Jones, Edwin Jones, Rosie Stiller, Genevieve McGirr.

Second row: Gertrude Cossar, Henry Mahoney, Margaret Stearns, William Sweeney, John Day, Mr. Preston, Blanche Bailey.

Front row: Edward Presby, Doris Wilson, Chandler Hurd, Marion Lathe, Rosamond Jerould, Lewis Bailey, Doris Kimball, Flora Dinsmoor.



A SENIOR CLASS BOOK reflects the life of our school. Much that we have done, thought, gained, or been, is lying as in magic preservation on its pages.

It is not only for the seniors, but for the undergraduates as well. This book is a record of our school activities, accomplishments and good times. In the future when we look at the Kronicle we will undoubtedly be reminded of the co-operation and good sportsmanship which were shown us by our friends, schoolmates and faculty.

As we walk along the paths of life we often stumble against obstacles, but somehow if we try hard we can usually overcome them. We all wish that we may lead a happy life. It is in just such small things as our year book that we sometimes find pleasure. We can look back on our school days and it helps us to enjoy the present and to look forward to the future. In life we have a great deal to be thankful for—the same is true when we are in normal school.

Seniors and undergraduates think of this as "our school year book for 1932", and the editors will feel duly compensated for the time and effort they have put into its publication.

Rosamond P. Jerauld,
Editor-in-Chief.



Senior President's Message

As we reach the end of the way it is only natural and within our rights to pause a moment, survey the ground on which we stand, and look back over the road which we have recently passed. We should give a parting word to those following and with them survey the regions beyond, then select our course, and with the knowledge we have gained forge our way toward the goal which we seek to attain.

To my associates may I make this plea. As we separate and go far and wide over the land, try not to forget the days at Keene Normal, the friends you made, and what your Alma Mater has done for you. Reflect credit upon your school. Keep in touch with her at all times and be ready to give her support if needed. I wish you all the greatest of success and happiness in your work.

To the undergraduates may I leave this one thought. K. N. S. is yours, the pleasant campus, the enjoyable hours of friendship, the inspiration of the class room, the faith of your loved ones, and greatest of all, the chance to be yourself. All these are within the grasp of a clear mind. Protect and root for her. Work for her as you never did for anything else. When you get ready to leave we know that our Alma Mater will be a stronger and more vigorous influence in preparing real educators, and that you will have received the maximum of inspiration.

—Robert D. Bailey.
(President of Senior Class).

Class Teachers



MARION M. MACDONALD



CONRAD A. ADAMS

Class Marshals



STELLA ELLIS



STUART F. CARTER

Commencement Program

~ 1932 ~

Faculty Reception to Seniors, Friday, June 3, at 8 o'clock.
Spaulding Gymnasium.

Senior Dance, Friday, June 17, at 8 o'clock.
Spaulding Gymnasium.

School Picnic and Water Carnival, Saturday, June 18, at 10 o'clock.
School Camp, Wilson Pond.

Baccalaureate Address, Sunday, June 19, at 3:30 o'clock.
Court Street Congregational Church.

Last Chapel, Monday, June 20, at 10 o'clock.
Spaulding Gymnasium.

Senior Banquet, Tuesday, June 21, at 6:30 o'clock.
Keene Country Club.

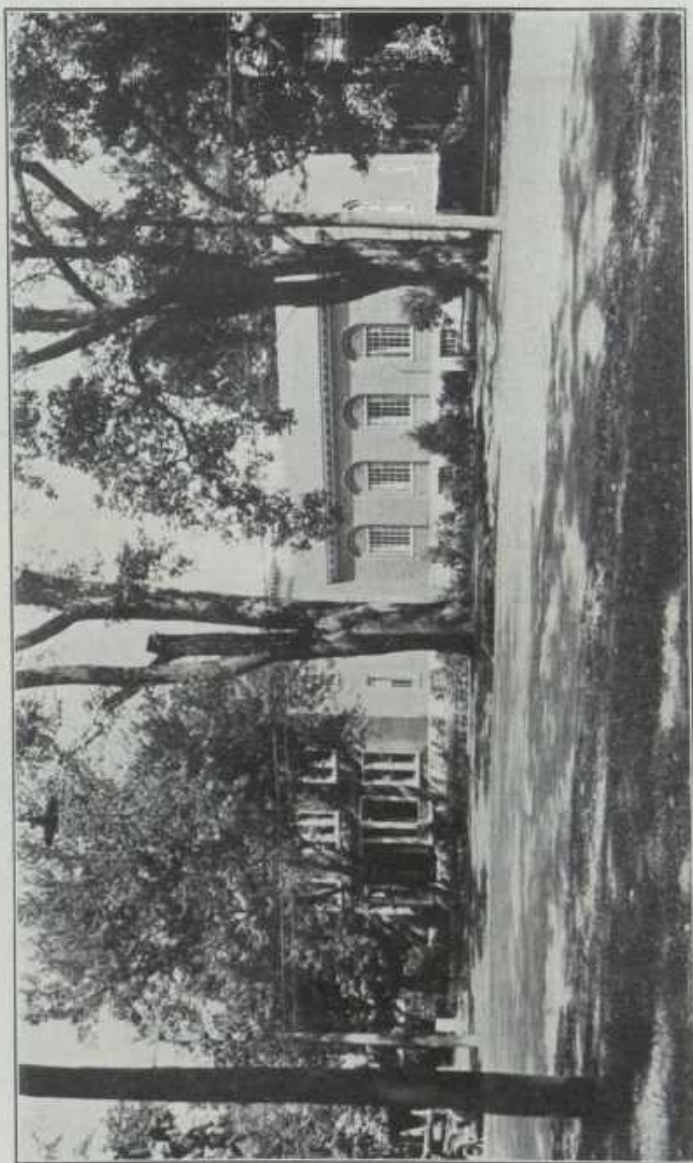
Rose Night, Wednesday, June 22, at 7 o'clock.
School Campus.

Class Day—Ivy Planting, Friday, June 24, at 2:30 o'clock.
School Campus.

Commencement Play, Shakespeare's "Twelfth Night",
Friday, June 24, at 8 o'clock. Spaulding Gymnasium.

Commencement Exercises, Saturday, June 25, at 10.30 o'clock.
Colonial Theatre.





Wallace E. Mason Library

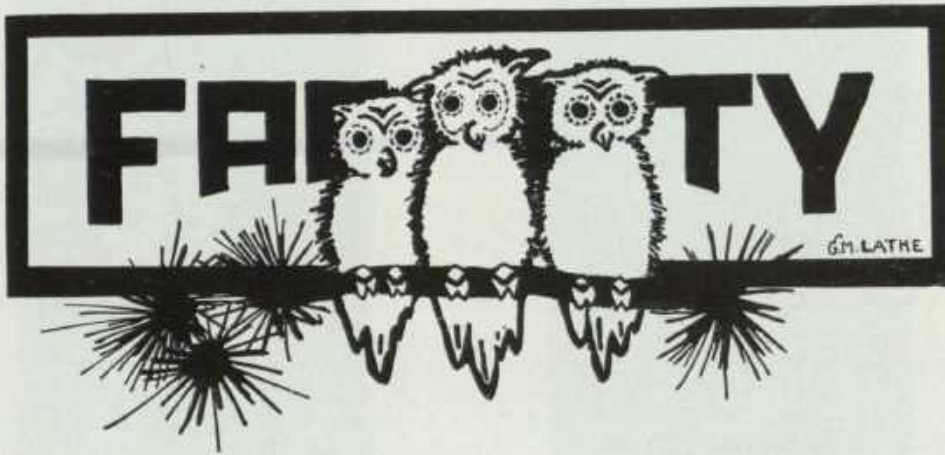


Wallace E. Mason, President

Dean of Women



Isabelle U. Esten.



INEZ M. VAUGHAN
Supervisor of Campus Schools



IDELLA K. FARNUM
Supervisor of Rural Training



IDA E. FERNALD
Assistant Dean



MABEL R. BROWN
Secretary, Customs and Manners



MARTHA E. RANDALL
English



ISABEL M. BLAKE
History



MARION FROST HUDSON
History



FRANK H. BLACKINGTON, JR.
French



HARRY W. DAVIS
Music



HENRY D. CARLE
Dean of Men, Science



FREDERICK J. SIMMONS
Sociology



CHARLES W. CUTTS
Economics, Sociology



A. MARIE EPPINGER
Primary Methods



MARGARET M. LITTLE
Kindergarten Theory



M. MARIE THYNG
Biology, Bacteriology



CONRAD A. ADAMS
Trades and Industries



SPRAGUE W. DRENAN
English



ELIZABETH P. SHAW
Psychology



EDNA M. McGLYNN
History



MARION M. MacDONALD
Domestic Science



CLARENCE H. DeMAR
Printing, Industrial History



SPENCER E. EATON
Manual Training



HARRY B. PRESTON
English, Education



DAVID WEBB
Physical Education



MELVIN J. WEST
Bursar, Penmanship



WALTER A. PIERCE
Trades and Industries



LUCY H. DOANE
Art



DOROTHEA SHUTE
Public Speaking



ELIZABETH HENDRY
Domestic Science



JEAN F. BAIRD
Art



JAMES A. KEECH
Chemistry, Physics



WILLIAM A. CALDWELL
Physical Education



MAYNARD T. WALTZ
Latin, Psychology



MERTON T. GOODRICH
Mathematics



WINIFRED BOOTH
Physical Education



ELIZABETH E. GREGORY
Geography



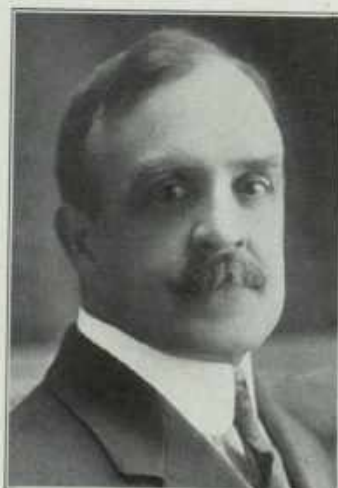
ETHEL J. RAMSDEN
Nature Study, Science



ALICE M. STONE
Assistant Librarian



ISABEL F. WORTH
English



OSCAR C. GALLAGHER
Secondary Education



DR. RUTH C. WARWICK
Medical Examiner



JESSIE HEIM, R. N.
School Nurse



WILLIAM F. SKELTON
 Supervisor of High Schools



EDWIN S. HUSE
 Principal, Central Junior High School



BERTHA C. MANCHESTER
 Headmaster, Hancock High School



VILLA HALL WIGHT
 Headmaster, South Acworth High School



Central Junior High

Back row: Miss Harriett Leslie, William A. Caldwell, Miss Winifred Booth.

Second row: Miss Adelaide Merriman, Miss Lillian Brownlee, H. Warren Dow, Miss Amy Tenney.

Front row: Miss Marjorie Beach, Frank H. Blackington, Principal Edwin S. Huse, Roy L. Terrill, Mrs. Della R. Davis.



Wheelock School

Front row: Mrs. Bertha S. Davis, Miss Mabel F. Plante, Miss Margaret M. Little, Miss Blooma Ziegler.

Back row: Miss Bertha Twining, Miss Gertrude Merriam, Miss Vera Smith, Miss Mabel M. Fisher.


~~~~~  
*F a c u l t y   A u t o g r a p h s*  
~~~~~



Four Year Course

THELMA RUTH FITZGERALD, MITHUEN, MASS.

"Thel", "Fitzzy"
Academy of Science (2) (3); Secretary (3); Forum (2) (3) (4); Varsity Debating Team (2) (3) (4); Kronicle Board (3) (4); Rifle Team (2); "K" Club (2) (3) (4); Hockey (2) (3) (4); Class Basketball (2) (3); Y. W. C. A. (1) (2) (3) (4); Life-Saver (1) (2) (3) (4); Class Baseball (1) (2) (3).

"Thel" is the envied possessor of wavy brown hair, merry brown eyes and a charming smile. She is dignified, studious and yet fun-loving. Her frank and winning ways should carry her far in the future.

Here's to "Thel"—a fine friend and an all-round good sport!

CHANDLER HURD, PITTSFIELD

"Chan"
Kappa Delta Phi (1) (2) (3) (4); Secretary (4); Dramatic Club (3) (2) (3) (4); Varsity Baseball (3) (4); "K" Club (3) (4); Kronicle Board (3) (4); Men's Glee Club (4); Secretary-Treasurer (4); "Merchant of Venice" (1); "The Rivals" (2); "The Taming of the Shrew" (2); "The Romantic Age" (4).

As the second Musketeer, he had a smile and pleasant word for everyone. Chan exemplifies the old adage, "Smile and the world smiles with you." In studies, dramatics or what-you-will you could depend upon "Chan" to deliver the goods. His witty remarks got a laugh every time—there was never a dull moment with "Chan" around.

GENEVIEVE ANN JAASAD, FRANKLIN

"Miss Jaasad", "Gen"
Dramatic Club (1) (2) (3) (4); Academy of Science (3) (2) (3); Vice-president (3); Y. W. C. A. (1) (2) (3) (4); Forum (1) (2); Sigma Pi Epsilon (4); Rifle Club (2); Senior Life Saver (1) (2) (3) (4).

"Gen" has been a real standby for the class and was sincerely missed the last part of our Junior year—a person who could always be depended on to fill up gaps in classes with an argumentative question and whose infectious giggle and staunch support were appreciated by her class-mates.

ROSAMOND PARKER JERAULD, MANCHESTER

"Rommy"
Academy of Science (2) (3) (4); President (4); Kronicle Board (2) (3) (4); Editor-in-chief (4); Y. W. C. A. (1) (2) (3) (4); Secretary (2); Vice-President (4); Sigma Pi Epsilon (4); Forum (2); Manchester Club (1) (2) (3) (4); Soccer (1) (2); Class Basketball Team (4); Class Baseball Team (1) (2) (3).

Hail to the chief of the Kronicle Board, who put things through in record time. She's the girl whom everyone is glad to see coming, who can laugh at a joke whether it be on herself or someone else, and who can study, have a good time, or direct several clubs—all with equal skill. She will ever be famous as a melodious (?) singer of "Wilets", as a true friend, and as having a good eye for a tennis ball.

EDNA LINNEA JOHNSON, HILLSBORO

"Edna"
Y. W. C. A. (1) (2) (3) (4); President (2) (3); Dramatic Club (1) (2) (3) (4); "The Rivals" (2); Jury (4); Glee Club (1) (2) (3); "Bethlehem" (3); Business Manager (3); Keene Chorus Club (1) (2) (3); Kronicle Board (3) (4); Forum (1) (2); French Club (1) (2); Chapel Monitor (3).

Tact and thoughtfulness were two outstanding characteristics of "Edna" and her standing in class reflected her scholastic ability. Her studies didn't keep her from a varied list of other activities, however, nor from being a good friend.

VIRGINIA ALLISON PARK, PITTSFIELD

"Ginny"
Y. W. C. A. (2) (3); Class Baseball (2) (3); Academy of Science (2) (3); Sigma Pi Epsilon (4); Kronicle Year Book Staff (4).

"Ginny's" poise and dignity have won the admiration of many school mates. She has the decisiveness and humor which make her a pleasing companion. "Ginny's" creative ability in English has been recognized by us all.





LOUIS L. RAMSAY, COLEBROOK

"Lester"

Kappa Delta Phi (1) (2) (3) (4); Secretary (2); President (3); Dramatic Club (1) (2) (3) (4); President (4); "Merchant of Venice" (1); "The Rivals" (2); "The Youngest" (3); Academy of Science (1) (2) (3); Chapel Choir (1).

Louis has been a familiar figure on campus for four years now and a friend of all. Studious, conscientious and with the gift of leadership he has been prominent in both fraternal and dramatic circles. Personally, we doubt anyone's ability to fill his place.

CAROLINE TEWKSBURY, LITTLETON

"Tewky"

"K" Club (2) (3) (4); Secretary (3); Vice-President (4); Rifle Team (2) (3); Manager (3); Y. W. C. A. (1) (2) (3) (4); Treasurer (2); Captain Class Basketball (2); Captain Class Baseball (2); Field Hockey (2) (3) (4); Class Secretary (4); Senior Life Saver (1) (2) (3) (4).

To know "Tewky" is to appreciate the worth of her friendship and to understand the reason for her popularity. She is a most versatile young lady and has taken an active part in many of our school activities. Here's luck to an excellent student and a good sport!

BEATRICE ARLENE WILCOX, KEENE

"B"

Keene Club (1) (2) (3) (4).

A cheery "Hello" is heard in the corridor at Huntress. There stands "B" Wilcox with an armful of books and a merry twinkle in her eye waiting for her class-mates. We have often wondered how "B" could always be on time and have her lessons well prepared, in spite of the fact that she lives in town. We like to listen to "B" talk. She uses excellent English.

Home Economics Course

ARMINE BEATRICE BURSIEL, MANCHESTER

Home Economics Club (1) (2) (3) (4); Manchester Club (2) (3) (4); Y. W. C. A. (1) (2) (3); The Academy of Science (3).

A girl whom you like better the longer you know her. Her quiet ways do not let you know what a jolly companion she can be. May her normal school training help her find the way to some man's heart in the proverbial manner!

ORPHA MARY COLLINS, PRETSPORD, VT.

"Sally", "Orpha"

Stunt Club (2) (3); President (2); Nu Beta Upsilon (3) (4); Academy of Science (3); Class Baseball (1) (2) (3); Home Economics Club (2) (3) (4); Y. W. C. A. (1) (2).

Orpha is endowed with a jolly, friendly disposition and a wealth of giggles and grins. We hear that she is a good teacher, and also that she has a weakness for "sweet potato pie"!

We shall always remember Orpha as the star performer in the Girls' Stunt Club.

How's tricks, Orpha?

KATHLEEN ELINOR GOSS, LEBANON

"Kitty", "Kay"

Nu Beta Upsilon (1) (2) (3) (4); Home Economics Club (1) (2); Y. W. C. A. (1) (2).

"Kitty" has been an addition of life to our group, although we have not had the privilege of having her with us very long. Her cooking has made her famous to many groups. Remember the old saying, "Kitty", "the way to a man's heart is thru' his stomach"—best of luck "Kit"!

MARJORIE GOULD, ATHOL, MASS.

"Marge"

Academy of Science (1) (2) (3); Home Economics Club (1) (2); Secretary (2); V. W. C. A. (1) (2) (3); Nu Beta Upsilon (2) (3) (4); Senior Advisor (3).

"Marge" is the girl of our group who has greatly helped in keeping our class average up. Many of the Freshmen girls of 1931 learned to know and like her very much. With all her working "Marge" has won many friends by her witty remarks and clever impersonations.

IRENE ELLEN JEWETT, MIDDLEBURY, VT.

N. B. U. (3) (4); Home Economics Club (1) (2); V. W. C. A. (2); Vermont Club (1) (2).

She takes her time at things she does but then the world wasn't made in a day and Irene is one of the best workers there is in the Senior Class! You might think that she wasn't full of fun but just ask the rest of her classmates! We wish you "speed", Irene.

RUTH MARGARET LANGLEY, REEDS FERRY

"Ruthie"

Academy of Science (2) (3); Home Economics Club (1) (2); Nu Beta Upsilon (2) (3) (4); V. W. C. A. (1) (2) (3); Senior Advisor (3).

Where can one find a girl with as many admirable qualities as Ruth has? She is dignified, bright, loyal, and studious, and yet a person who enjoys a good time, too.

Ruth is a beautiful dancer and gracefulness itself.

Her record at Hancock was splendid and we are confident that success will be hers!

FRANCES BLAKE PEABODY, BERLIN

"Fran"

V. W. C. A. (1); Forum (1); Home Economics Club (1) (2) (3); Nu Beta Upsilon (2) (3) (4); President (3); Hockey (2) (3); Basketball (3).

Such a quiet girl, I am sure you all know her. The above list of her activities shows that she has been very quiet doesn't it? The seniors of the home ec. course are glad she is their friend.

DOROTHY NEVENS PERKINS, MANCHESTER

"Perky", "Dot"

Dramatic Club (1) (2) (3) (4); Nu Beta Upsilon (3) (4); Home Economics Club (1) (2); Life Saving Corps (1) (2) (3) (4).

"Perky", the vivacious, fun-loving, never to be forgotten, member of our class came to us from Manchester four years ago. A marked ability in dramatics and sports plus an ever present spirit of camaraderie has won her many friends. "Perky" has provided many an amusing hour, for the members of the Practice House family this year, with her humor and ingenious impersonations. All who know her and love her, wish the very best of everything in life for "Perky".

MARJORIE ALICE RHODES, WALPOLE

"Marge"

V. W. C. A. (1) (2) (3); Home Economics Club (1) (2); N. B. U. (2) (3) (4); Basketball (3).

Coming to us from the nearby town of Walpole, "Marge" has made many friends in her four years. Her friendly spirit, her willingness to help, the humorous sketches that have entertained us so many times, all of these will keep "Marge" in our memory. Successful she will be, in all that she undertakes, and we are certain she will be loved by all who know her.





LAURA MARIE F. ROY, SOMERSWORTH

"Kinkie"

Academy of Science (3); Home Economics Club (4); Nu Beta Upsilon Sorority (3); De La Salle (4).

From the far away land of Somersworth came Laura in pursuit of education. She came, she saw and she conquered all of our hearts with her ready wit and clever impersonations. To those who have never known Laura, you never will fully realize what you have missed. The teaching profession welcomes you, Laura!

DORIS GRACE WARNER, KEENE

"Dot"

Keene Club (2) (3) (4); Home Economics (1) (2) (3) (4); Academy of Science (1) (2) (3) (4); Kronicle Board (4).

It was not until her fourth year with us, when "Dot" came to the Practice House to live that we really knew her. Her sweet and lovable nature has endeared her to us, and we are sure she will be remembered by us all as a true friend. Best of luck to you, "Dot".

PHYLLIS ELIZABETH WHITEHOUSE, ALTON

"Phyl"

French Club (3) (4); Junior Dramatic Club (1); Senior Dramatic Club (2) (3) (4); Rifle Club (2); "K" Club (2) (3) (4); Nu Beta Upsilon (2) (3) (4); Orchestra (1) (2) (3); Band (2); V. W. C. A. (2) (3) (4); Life Saver (2) (3) (4).

"To know her is to love her."

And from the Valley of Smiling Waters came Phyllis—winning all of us with her vibrant fun and vivid personality. With her varied talents of Dramatics, music, rifle and Home Economics, "Phyl" has been much in evidence. And fortunate is the community where "Phyl" will teach Home Economics. Good luck in the field "Phyl"!

ELEANOR SARAH WILLIAMSON, LANCASTER

"Billie"

V. W. C. A. (2) (3); Home Economics Club (2) (3); N. H. U. (3) (4); Rifle Club (2) (3).

"Billie" joined us from Framingham our Sophomore year. She has been very active in Home Economics. "Billie" is one of those quiet girls but when one knows her—oh!!

If you haven't become acquainted with "Billie"—you sure have missed a lot. Good fortune attend thee—"Billie".

Grades and Industries

ELWIN WESLEY AVERY, EAST KINGSTON

Assistant Football Manager (1929); Football Manager (1930).

"Skip" is responsible, yet joyously human. He's into this and that, popping up behind all activities, among the leaders of the men in marks, wit aplenty and not afraid to use it. Would prefer the "woodshop" for hangout.

ROBERT DUDLEY BAILEY, CONCORD

"Bob"

Class President (1) (2) (3) (4); A. P. T. Fraternity Executive Board (1) (2) (3); Vice-President (3); "The Alpha", Associate Editor (1) (2); Editor (3) (4); Athletics, Football (1); Hockey (1) (3); Baseball (1) (3) (4); Cast—"Esther" (1); "Pinafore" (2); "Belle of Barcelona" (3); Chapel Choir (1) (2) (3) (4); K. N. S. Male Quartet (1) (2); Men's Glee Club (1); Fraternity Male Quartet (1) (2) (3) (4).

"Bob's" personality, good-nature and ability as a scholar and leader have won him many friends. The class of 1932 has enjoyed his administration as president. He has been earnest, constant and eager to serve well, those who selected him as their leader. The service rendered proved the wisdom of the choice. Here's luck—"Bob"!

ANDREW M. BOLAND, MANCHESTER

"Andy"
Kappa Delta Phi (1) (2) (3) (4); Mechanic Arts Club (1) (2); Glee Club (1) (2); De La Salle (1) (3) (4); Manchester Club (1) (2) (3) (4); Academy of Science (1).

"Andy" came to K. N. S. in his quiet and reserved manner in 1928. We remember "Andy" by, "I live in Squog, down by the river. If you are ever down that way, drop in". Reliability, depth, and sincerity help make "Andy" the pal he is. Where is he going? "On—just for a cup of coffee."

HAROLD ELLSWORTH BRIDGE, KEENE

"Mike"
Football (1) (2) (3); Ice Hockey (1) (4); Baseball (1) (2); Mechanic Arts Club (1) (2); Cantata (1); Keene Club (1) (2) (3) (4); President (1); "K" Club (1) (2) (3) (4); Kronicle Board (3); Class Basketball (1) (2) (3) (4); Non-fraternity President (1) (2).

"Mike" lives in town but he's always around when it comes to campus activities. If you want some real fun get him into an argument. We all know that he will "get there" altho' he has flat feet and believes doughnuts can be fried in hot water.

JAMES CONNOLLEY, GONIC

"Pat"
Alpha Fraternity (1) (2) (3) (4); Vice-President (4); Alpha Board (2) (3) (4); Football (1) (2) (3) (4); Captain (4); Mechanic Arts Club (1) (2); Baseball (1) (2) (3) (4); "K" Club (1) (2) (3) (4).

"Pat" possesses that rare ability of meeting everyone with a smile. His smile plus his happy-go-lucky nature has awakened the "Keene" admiration of all. "Pat" is one of our most versatile athletes. His thrilling performances on the gridiron will be long remembered by everyone.

EBEN REED HARDY, MANCHESTER

"Chief"
Alpha Pi Tau (1) (2) (3) (4); Orchestra (1) (2) (3) (4); Band (1) (2) (3) (4); Dramatic Club (1) (2) (3); "Taming of the Shrew" (3); Forum (1) (2) (3) (4); Vice-President (3); President (4); Freshman Debating Team (1); Varsity Debating Team (2) (3) (4); "Alpha" Board (1) (2) (3) (4); "Kronicle" Board (3).

Reed is one of Keene's foremost debaters, having been of the K. N. S. varsity team for four years. His activities are not limited to this sphere, however, as he is an excellent musician, and a good gymnast, as well as being one of the Alpha editors. Here's to your success—Reed!

JOHN S. HOBSON, CONCORD

"Johnny", "Hobby"
Football (2) (3) (4); Captain (3); Baseball (1) (2); Alpha Pi Tau Fraternity (1) (2) (3) (4); Master of Ceremonies (2); Advocate (3) (4); Kronicle Board (2) (3) (4); "K" Club (1) (2) (3) (4); President (3); Class Treasurer (2) (3); Alpha Board (4); Mechanic Arts Club (1); Academy of Science (1) (2).

Four years ago from the capital city of our state, came Johnny, winning fame, popularity and friends. As a football hero, he has excelled and he will be greatly missed when the team lines up next year—for who can forget Johnny racing down the field for a touchdown, midst the hoarse and victorious shoutings of Keene. Not only as a football captain, as a basketball referee, as a member of the Alpha Pi Tau, as a Mechanic Arts student, but for his ever present grin and willingness to help will Johnny be remembered.

THOMAS L. KING, DOVER

"Tommy"
Kappa Delta Phi (1) (2) (3) (4); Treasurer (3); Academy of Science (2) (3); Football (1); Basketball (1); Mechanic Arts Club (1) (2).

"Tom" or "Tommy" goes for Thomas, although he will answer to any name if you have a bag of candy. He seldom butts in and is very quiet, but there is a lot under that quietness. A jacket, a brief-case, a hatless head—you may know him by these. His favorite occupations are pushing the cart in the dining room and acting as sentinel at a certain outside Huntress door.





LLOYD T. OLMSTEAD, CONCORD

"Mal"

Kappa Delta Phi (1) (2) (3) (4); Orpheus Club (2) (3) (4); Chapel Choir (1) (2) (3) (4); Keene Chorus Club (1) (2); Men's Quartet (3); Glee Club (1) (4); Junior Dramatic Club (1); Senior Dramatic Club (2) (3) (4); "Esther" (1); "The Rivals" (2); "Oh Murder" (1); "The Youngest" (3); "Belle of Barcelona" (3).

"Mal" is classed as one of our K. N. S. crooners and has been very active in dramatics. His hangout is the print shop, and by the way—have you seen his modernistic printing? "Mal" is always willing to help and he mams a big oar. His favorite expression is, "Got a dime?" Wonder what he does with it? He meets "Andy" coming back.

CLAYTON L. PERREAULT, KEENE

"Cape", "Cupid"

Men's Glee Club (1) (2) (4); Chapel Choir (1) (2) (3); Keene Chorus Club (1) (2) (3); Intra-mural Sports Committee (Sec.) (2); Intra-mural Soccer (3); De La Salle Club (1) (2) (3) (4); Keene Club (1) (2) (3) (4).

"To know him is to like him."

The little "prince of good fellows" fits "Cape" perfectly. His ever obliging manner has caused everyone to like him at Laconia High as well as Keene Normal. After studying, "Cape" prefers dancing. "Cape" is sure to succeed if personality counts!

—:—

Three Year High School Course

OLIVE LYDIA AMES, PITTSFIELD

"Ollie"

V. W. C. A. (1) (2) (3); Treasurer (3); Stunt Club (2); Class Basketball (1); Leather Craft Club (3).

"Ollie", I'm sure, needs no introduction to any of her classmates. We all know her for her sunny disposition, catching smile, and persistent optimism. She is the best of pals, whether it be in school or at home, "on board" or "on leave".

ELLEN RITA ANDERSON, PORTSMOUTH

"Blondie", "Tar"

De La Salle (1) (2) (3); Academy of Science (1) (2) (3); Leathercraft Club (3); Orpheus Club (3); Class Baseball (1); Class Basketball (1) (2); Class Hockey (1) (2) (3); Class Soccer (1) (2).

"I'll be merry, I'll be free,

I'll be sad for nobody."

I. Objective: To appreciate one of the outstanding blondes of K. N. S.

A. Approach: Smiling face, blonde hair, personality.

B. Problem: To make a speedy acquaintance.

C. Essential points: Athletic, fun-loving, friendly.

D. Summary: A girl we are glad to have known.

LEWIS DEMING BAILEY, WEST LEBANON

"Lew"

Forum (1); Junior Dramatic Club (1); Senior Dramatic Club (2); "K" Club (1) (2) (3); Kappa Delta Phi (1) (2) (3); Baseball (1) (2); Football (1).

"Lewie", most folks know as the boy who haunts Fiske with the bell three times a day. However some of us knew him as a classmate and still others as the boy who chopped wood, filled the wood box, built the fires and taught third nine in South Acworth. Cheer up "Lewie", we hope you will not have to do these things next year.

RUTH EVELYN REMIS, CHESHAM

"Ruthie"

Keene Club (1) (2) (3); V. W. C. A. (3); Soccer (1).

"She likes her sports, she likes her fun,

The best all-round to every one."

"Ruthie" and her inseparable E-"lizzie"-beth have been familiar characters in Keene. We won't forget them in a hurry.

MALAH L. BLACKMAN, KEENE

"Skipper"

Keene Club (1) (2) (3).

M—erry
A—mbitious
L—oyal
A—ffable
H—onest

MILDRED L. BROWN, AUGUSTA, ME.

"Mickey"

Academy of Science (2); Art Club (3); Leathercraft Club (3).

A Textbook—Studied? Yes, and How,
A Loaf of Bread—at mealtime—but not Now—
Beside us seated in a movie show—
Or anywhere—It's Paradise with Thou!

VERA P. BUTCHER, SUNAPEE

"Vera"

Quiet and unassuming, but we feel her influence! Sympathetic and sunny, too! That's Vera!

DOROTHY MARGARET CHUTE, KEENE

"Dot"

Forum (1); Dramatic Club (1) (2) (3); Keene Club (1) (2) (3).

Here's to you, Dot! One of our jolliest classmates and best of friends. "Dot" was one of the best sports of the H. F. division. We know that she will make a first-class teacher and whether she be teaching French, English or History we surely do envy her pupils.

FRANCES LAURA CLARK, TROY

"Frannie", "Fran"

Keene Club (1) (2) (3).

Always helpful, always good,
Always doing what she should,
As a teacher, she's efficient
In her studies, she's proficient.

WILMA FRANCES CLARK, PORTSMOUTH

"Billie"

Keene Chorus Club (1); Freshman Choir (1); Senior Life Saver (1) (2) (3); Y. W. C. A. (1).

This announcement is coming to you through the courtesy of the PUZZLE COMPANY.

This morning our well-known and as well liked "Billie" will favor us with a few request numbers. We have all listened to and enjoyed her voice many times. Please stand by.





ETHEL BEATRICE WALKER CLOUES, HOPKINTON

Mrs. Cloues

The Forum

Mrs. Cloues is especially "Keene", having received an elementary diploma from K. N. S. in 1928. She is intimately acquainted with every tree on the campus, and knows and appreciates the best in literature. We wish her success!

MARY ELIZABETH COLBY, SUNCOOK

Y. W. C. A. (1) (2); Treasurer (2); Dramatic Club (1) (2) (3); Secretary (3); Play the "Fatal Pill" (1); "K" Club (2) (3); Varsity Basketball (1) (2) (3); Class Basketball Team (1) (2) (3); Varsity Hockey (2); Class Hockey (1) (2); Senior Life Saver (2) (3).

An ornament to every occasion is Mary. On the athletic field she's a star; on the stage a loving heroine; in the pool a life saver; in the dormitory—as blithe as a canary; in the classroom—the admiration of all; always a manequin. Do you wonder? Mary has a place in everyone's heart for her loving ways and just consideration of all.

"A friend of all—a foe of none."

LILLIAN BEATRICE DAHL, FITZWILLIAM

"Lillums" or "Li"

Keene Club (1) (2) (3).

Ambitious, studious and friendly characterizes "Lillums". The 3H division will lose a good mathematician when Lillian says adieu.

MARY DORIS DAY, HANOVER

"Molly"

Freshman Choir (1); Keene Chorus Club (1); Dramatic Club (1) (2); "Belle of Barcelona"; Leathercraft Club (3).

How could we have stood our boring classes without "Molly"? What will next year freshmen do for an authority on bridge? What has been her goal? We know not yet without a doubt those who "hitch their wagon to a star" will make the grade.

MARY EVELYN DETOUR, ASHVELLOT

"Sunny"

Forum (1) (2); Phi Sigma Phi, Honorary Member (1); President (2); Rifle Club (1); Leathercraft (3); De La Salle (1).

S is for "Sunny" in nature and name,
U for Understanding of man and dame,
N for Neighborliness, a trait we admire,
N for Nonchalance when Finke has to retire;
I for her "Ideal" of which we hear plenty,
E for Eloquence of whispers at ten-thirty.

VERA C. DICK, WILTON

"Dickey", "Girl"

Y. W. C. A. (1) (2); Camera Club (2); Leathercraft (3).

Everyone anticipates the day when "girl" broadcasts her masterpieces of poetry over station "B-O-Y". We won't forget to tune in, "Dickie"!!

PHILIP MAXWELL DODGE, BRADFORD

"Phil"

"K" Club (1) (2) (3); Junior Dramatic Club (1); Kappa Delta Phi (2) (3); Orchestra (1) (2) (3); Varsity Baseball (1) (2) (3); Hockey (3).

"Phil" is a boy who will make good anywhere as he has the personality to do so. "Phil" plays baseball well, and has made three letters in it. "Phil" is likable, and one person in particular enjoys his company. Take care, "Phil"!

MARGUERITE D. DeBOIS, BELMONT, MASS.

"Peg"

Orchestra (1) (2) (3); De La Salle Club (1) (2) (3); Treasurer (2); Massachusetts Club (3); Vice-President (3); Rifle Club (1) (2) (3); Division Basketball (1) (2); Life Saving (2) (3); Division Hockey (1); Division Baseball (1) (2); Orpheus Club (3).

P is for "Peggie", also Pal,
E for her Ejaculation, ever—"Al".
G for Generosity to a friend,
G for Giggles which never end,
I for Impudence at "one of ten",
E for an Eternal—math course—her yen.

FLORENCE ENID DUNNINGHAM, NASHUA

"Flo", "Flo"

Junior Dramatic Club (1); Senior Dramatic Club (2) (3); Vice-President (3); Forum (1) (2) (3); Secretary (3); Varsity Debating Team (1) (2) (3); Cast of "Many Happy Returns" (1); "Belle of Barcelona" (2); Vermont Club (1); Class Soccer (1); Class Hockey (2).

"A foot more light, a step more true,
Ne'er from the heath flower dashed the dew."

Temperament incarnate. This is "Flo". Your flashing moods and your ready tongue have made you friends—and enemies. Do not fret, though "Flo", all great people have enemies. Watch out though that your delightful inconsistency does not intrude itself into matters of moment. Good luck and good hunting to the last sheep of the 3HJ division.

LENORA V. EDGEComb, HARRISON, ME.

"F"

Miss Edgecomb, a graduate of Farmington Normal School comes to us on leave of absence from School Street School, Rochester, N. H., for a year of study at K. N. S.

"F" is prompt, faithful, efficient, scrupulous and liable. "Service" is her motto.

BRUNA ALMA FARINOLI, FITZWILLIAM DEPOT

"Brunie", "Peanut"

Orpheus Club (3); V. W. C. A. (3); Outing Club (1) (2).

Bruna was a welcome addition to the gang on second floor Fiske this year. We were glad that she returned to K. N. S. for a post-graduate course. We hear that Brunie has a weakness for Greek statuary and peanuts! Don't forget that lights should be out at 10 o'clock, Brunie!

EDITH E. FLETCHER, BALDWINVILLE, MASS.

"Liz"

Glee Club (2) (3); Keene Chorus Club (2) "Belle of Barcelona"; Basketball (2); Y. W. C. A. (1) (2); Senior Life Saver (1) (2) (3); French Club (1) (2); Massachusetts Club (3).

Edith likes to ride, likes to dance, likes to participate in sports, but she can also be very serious when business is concerned. Her pals on third floor Fiske will certainly miss her ability to deal out apple pie and ice box cookies, and to make fun; no doubt, they're not the only ones who are going to miss her next year.





1932



ALYCE LOUISE GAGE, PELHAM

"NC"

Dramatic Club (1) (2) (3); "Happy Returns"; "Taming of the Shrew"; Y. W. C. A. (1) (2) (3); Secretary (3); Forum (1) (2) (3); Varsity Debating (2) (3).

She is the person who should receive the prize for patience. A virtue of any good teacher. Has anyone ever seen her angry? She believes that a smile will go a long, long way.

RUTH GILLINGHAM, CONTOOCOOK

"Gilly"

Dramatic Club (1) (2) (3); Glee Club (1) (2) (3); Stunt Club (1) (2); Rifle Club (2); Keene Chorus Club (2); Y. W. C. A. (1) (2) (3); "Taming of the Shrew" (1); Leathercraft (3); "Belle of Barcelona"; French Club (1) (2);

Here's to Ruth
With her ready wit
Always on hand to do her bit
She's made her place in the field of Math
With kindly deeds she has strewn her path
May our chain of friendship never end
Here's joy to the heart of a steadfast friend.

EDNA AUGUSTA HOLMES, GORHAM

"Eddie"

Division Baseball (1); Christmas Cantata (3).
"Her heart's in the Highlands wherever she goes."
"Bonnie Jeannie" Edna—one of the most attractive girls on campus. Her style—smooth, her smile—cheery, her friends—many. That's "Eddie".

MARY WESTON HOY, BEVERLY, MASS.

De La Salle Club (1) (2) (3); Secretary (3); Leathercraft (3).

Just another example of Massachusetts' sweet girls. Everybody knows "Ship A Hoy" with her cheery smile, and greeting. We feel sure she won't "Lew's" her thoughts of us.

HELEN BEATRICE HUSTON, CONCORD

"Zowie"

Phi Sigma Phi (1) (2); Secretary (2); Field Hockey (3); White Team; Basketball (3).

"Zowie", the girl who came back,
Hair of all colors but black,
A variety of freckles,
Eyes that are blue sometimes,
A little laugh that makes you laugh;
And then she laughs at your laugh
And you laugh at her again.
That's "Zowie".

G. EDWIN JONES, MANCHESTER

"Ed"

Academy of Science (1); "Belle of Barcelona"; Baseball (1); Football (1) (2); Manchester Club (1) (2) (3).

A most perplexing combination of characteristics is this tall, laughing person called Edwin. He is gifted with an undying sense of humor and we shall always remember him as the same old friend—loyal, generous to the highest degree, thoughtful and intelligent. Yes, this is "Jonesy"!

RUTH JONES, MANCHESTER

"Jonesy"

Manchester Club (1) (2); Treasurer (3); Y. W. C. A. (1) (2) (3); Keene Chorus Club (1) (2); Rifle Club (1) (2) (3); Archery Club (2); Leathercraft (3); Chapel Choir (1); Kronicle Board (3).

Here is "Jonesy" and no word quite so well describes her as that. Whenever you hear a most contagious laugh or someone humming in the corridor, there is the person whose motto is "Children should be heard as well as seen". What wouldn't we give to be as cheerful, sympathetic, helpful, and friendly as you. Sometimes a command of "slanguage" is an advantage as well as a disadvantage; is it not, "Jonesy"? Here's wishing we were going to be one of your future pupils!

EILEEN KEW, NORWICH, VT.

"Ike"

Y. W. C. A. (1); Glee Club (2); French Club (2); Keene Chorus Club (2).

Everyone has heard of "Ike",
Ingenious and so sportsmanlike.
Laughter—she certainly does her share,
Efficient—none other can compare,
Eager to do the thing that's right,
No one will forget dear "Ike".

ANNA FRANCES MCCARTHY, MANCHESTER

"Ann"

French Club (1) (2); Treasurer (2); De La Salle Club (1) (2) (3); Manchester Club (1) (2) (3); Secretary (2).

"Ann" is a true friend and a good sport. She is one of the fortunate J-H's who had the opportunity of teaching at Hancock, and Ann-like she made the most of her opportunity. May the same good luck follow her throughout her career.

ELLSWORTH C. MADISON, KEENE

"Houky"

Baseball (1) (3); Football (1); Keene Club (1) (3); "K" Club (1) (2) (3); Home Coming Committee (1) (2).

"Lefty", although a town fellow, took an active part in athletics, representing K. N. S. on the mound during the baseball season. He may be quiet but he has a fighting spirit—as was shown in the ring his Freshman year.

HENRY E. MAHONEY, NEWPORT

"Hacky"

Alpha Pi Tau (2) (3); Baseball (1) (2) (3); "K" Club (1) (2) (3); President (3); Chairman Home Coming Day (2) (3); Chairman A. P. T. Social Committee (3); Alpha Board (2) (3); Kronicle Board (2) (3); Manager of Basketball (2); Master of Ceremonies Freshman reception (3); 3-year Class Treasurer (3).

"Hack" has taken an active part in many of the activities of the school, especially athletics. If "Hack" should decide to give up the teaching profession he would not find it hard to get a salesman's job, especially Billy B. Van's product. A true fraternity man and a good fellow, that is "Hack".

F. HOPE MOORE, LITTLETON

Life Saving (1) (2); Interclass Soccer (1); Interclass Hockey (2); Interclass Baseball (1); Orpheus Club (1) (2); Keene Chorus Club (1).

"Ho, giant! this is I".

Herculean, but paradoxically petite. She is neat, sweet and elite. Hope's favorite pass time is writing letters and there's a reason . . . for her favorite song is "St. Louis Blues".

Don't ever lose that really lovely complexion Hope!





ALICE ELIZABETH MULLEN, PORTSMOUTH

"Al", "Moon", "Mullen"

Stunt Club (1) (2); Inter-class Hockey (2) (3); Inter-class Soccer (1) (2); De La Salle Club (1) (2) (3); Leathercraft Club (3).

This announcement is coming to you through the courtesy of the PUZZLE COMPANY. The first thing on our program will be "Eddie" Cantor, the second Billie Dooley, and the third James Gleason, all impersonated by our versatile artist Miss Alice Mullen. This is station B.U.S. signing off, over the J. A. B. C. net work. See you this summer!

MICHAEL JOSEPH MURPHY, JR., MANCHESTER

"Mike"

Manchester Club; De La Salle Club; Inter-class Basketball (3 H. S.—1 H. S.).

"Mike" worked during most of his career at Keene Normal so was not seen a great deal on campus. When he was around though, Manchester Central never had a more ardent defender. If he always practices the same pep, vim, vigor, and friendship, he is sure to come out on top.

MURIEL BERTHA NASH, NASHUA

"Muriel", "Blackie"

Orchestra (1) (2) (3); Division Teams, Hockey, Basketball and Soccer, Hockey (3); Baseball (2) (3); Basketball (1) (3); Soccer (1); Academy of Science (1) (2) (3); De La Salle (1); Leathercraft (3).

We J W's certainly know "Tallulah" for the pal that she is. She's been our friend for 3 years, but one little slip had us scared! Ask her to tell you about it (and how she got her name). If you want an assignment, a favor, or a dime "Tallulah" is ever ready to help you!

CHARLOTTE S. NIMS, KEENE

"Sky"

Hockey (1) (3); Tennis (1); Basketball (1) (2); Captain (3); Kronicle Board (3); Keene Club (1); Secretary (2) (3); "K" Club (1) (2) (3); Secretary (3); Senior Life Saving (2).

"Chy, we choose you to carry on."

A merry face, a happy giggle, a wonderful sport, a brilliant mind, a good pal. If "My Eleven Pounds of Heaven" ever was written for anyone it's our "Chy". "Chy" is another one of Keene's stars.

ANNE ALBERTA OULTON, NASHUA

"Anne"

French Club (1) (2); Y. W. C. A. (1) (2) (3); Glee Club (1) (2) (3); Chapel Choir (2); "Mercedes" in "Belle of Barcelona" (2); Keene Chorus Club (1) (2);

A—ne, the girl who likes to sing
N—eat, she's always spic and span,
N—ice as any girl in school,
E—verybody likes Anne.

MILICENT PASQUILL, MANCHESTER

"Milly", "Mil"

Manchester Club (1) (2) (3); Y. W. C. A. (1) (2); Phi Sigma Phi (2); Forum (1); Glee Club (2) (3); Keene Chorus Club (2); "Belle of Barcelona".

Did you say "Milly" was quiet? You don't know her I guess. Third floor Fiske rings with her merriment. One of her mottoes is "Going Home Today". Success "Milly" in your teaching.

JOSEPHINE ELIZABETH PICKETT, KEENE

"Joey"

Hockey (1); Keene Club (1) (2) (3); "K" Club.

Former Keene High athlete makes good!—the same old line, but isn't it true? She even likes Normal School so well that she delights in spending her summers there—studying or otherwise. Well, "Jo" here's luck for the future!

ALICE PIGEON, MANCHESTER

"Al", "Pigeon"

Division Hockey (1) (2) (3); Division Baseball (1) (2) (3); Orpheus Club (2); Keene Chorus Club (1); French Club (2); De La Salle Club (1) (2) (3); Manchester Club (1) (2) (3).

How she can tap those feet and tickle the ivories! "Black and Tan," "Al"! "Mood Indigo"! We'll hear more of this talented bird! Send us a card from France this summer "Al".

MARION F. PIKE, CONCORD

"Pikey"

"K" Club (2) (3); Academy of Science (2) (3); V. W. C. A. (1) (2) (3); Vice-President (2); Varsity Hockey (2); Stunt Club (2); Leathercraft Club (3); Forum (1); Orchestra (1); Phi Sigma Phi (2).

Tall, dark-haired, and dark-eyed, and just as steadfast as she appears—that is "Pikey". She is always willing to work even though she doesn't get the credit, for she is the synonym of generosity and helpfulness. When she was lost to us for nine weeks of her sophomore year we certainly missed her, but appreciated her the more when she returned. Perhaps some might say she is quiet, but those who know her can vouch she's just "heap's of fun". Peel us an orange, "Pikey", but watch out for the tea-cups.

KEITH QUIMBY, ANDOVER

"Quim"

Dramatic Club (1) (2) (3); Kappa Delta Phi Frat. (2) (3); Football (1); Tennis (1) (2); "K" Club (1) (2) (3).

"M. K." among his classmates holds that manly respect that is so characteristic in his makeup. Would we were men as manishly manly as he. If his female friends were as womanishly womanly how much nearer perfect we all would be!

PAUL CHARLES RIZZI, MILFORD

Alpha Pi Tau (2) (3); Secretary (3); De La Salle (1) (2) (3); Forum (1) (2); Freshmen Debating Team.

Ideals and ambitions are found in Paul, with the characteristics necessary to attain these heights. A real friend and a good fellow—thus we remember Paul.

VELMA DORIS ROGERS, MANCHESTER

"Vel"

V. W. C. A. (1) (2) (3); Manchester Club (1) (2) (3).

Who's going to Manchester? Why, "Vel", of course. In spite of that irresistible, unknown attraction, "Vel" has made loads of friends on campus. Why? She's snappy, she's peppy, she's full of fun, she's the kind that's liked by everyone.





GERTRUDE MARIE ROY, WHITEFIELD

"Trudy"

Soccer (1) (2); Capt. (1); Class Baseball (1) (2); Varsity Basketball (1) (2) (3); Varsity Hockey (3); "K" Club (1) (2) (3).

Trudy's chief delight is taking part in athletic contests but every one knows that her zeal in sports is carried over and applied with equal force to her studies.

Those who have lived on the same corridor with her would add the singing of humorous songs to the list of her accomplishments too.

FRANCES WINNIFRED SMITH, LACONIA

"Teddy"

Academy of Science (1) (2) (3); Nu Beta Upsilon Sorority (1) (2) (3); Outing Club; V. W. C. A. (1).

"Teddy", the girl of changes. She changed her course and then she changed her address and lived in town her second year. She left us last year, but now she's back again. We won't change our minds about you, "Teddy," we think you're fun, and you've already shown us you like to be different.

LEONARD JOHN SMITH, NEWPORT

"Smitty"

Secretary of Junior Dramatic Club; Play "Pot Boilers"; Forum; 4H Club.

"Smitty" has a vast store of knowledge and he knows when and how to use it. He is always busy at something—reading, studying, or collecting stamps. You can't really know "Smitty" unless you have lived with him.

ROSELLA BERNICE SMITH, HOOKSETT

"Rose"

French Club (2).

"Rose" has been too busy with her studies to be much of a mixer, but all who know her, know that she is a loyal friend and can always be depended upon to help a friend in her studies.

DOROTHY ADA SNOW, KEENE

"Dot"

Dramatic Club (1) (2) (3); Forum (1); Keene Club (1) (2) (3); "The Romantic Age" (3).

"Good things come in small packages." Once again it's true. If it weren't for her size and her dramatic ability "The Romance Age" would not have been nearly so interesting. She's not only a good actress but we know she will also be a success in her chosen profession. Here's luck to you, "Dot"!

LILLIAN SOLOMON, FRANKLIN

"Libby"

V. W. C. A. (1); Forum (1) (2) (3); Varsity Hockey (1); Division Hockey (1) (2).

Does anyone want to play bridge? You know that Lillian is in the vicinity. A true friend to everyone, loyal and earnest in work or play is Lillian. *Studios* and *industrious*, that's our "Libby".

DORIS U. STEVENS, MANCHESTER

"Dot"

Y. W. C. A. (1) (2) (3); Leathercraft (3); Camera Club (2).

Sometime at the end of a perfect day, we, your classmates, will gather 'round and say "Did you ever get the "Bill" from St. Stephens St?"

We'll expect you'll say "Yes" and add with a smile "I've admired correspondence courses for a long long while!"

WILLIAM M. SWEENEY, NASHUA

"Bill"

Alpha Pi Tau (1) (2) (3); President (3); Secretary (2); Advisory Council (2) (3); "Alpha" Associate Editor (2) (3); De La Salle Club (1) (2) (3); President (3); Forum (1) (2) (3); Freshmen Debating Team (1); Academy of Science (1); Kronicle Board (3); Chapel Committee (1).

"Bill" is the man of the hour about campus for if he is not in a hurry, he has some one looking for him in a hurry. "Bill" is very active in frat matters. One of "Bill's" ambitions is to be a headmaster. We wish you luck.

OLIN LOUIS SWETT, HILL

"Ollie"

Alpha Pi Tau Fraternity (1) (2) (3); Football (1) (2) (3); Baseball (1) (2) (3); Team Basketball (2) (3); "K" Club (1) (2) (3); Outing Club (1) (2) (3); Academy of Science (1); Mid-year Committee (1); Gym Team (1) (2) (3); Orchestra (dance) (2).

Lives of "shicks" all remind us

We should make our "lines" sublime

And departing, leave behind us

Hearts that are beating double time.

We all know "Ollie", our good right end in football and a good athletic coach. His friendly spirit and his ability to charm the fair sex have made him one of our greatest attractions. We hope to see you in the movies yet, "Ollie".

EDMUND D. TALBOT, WORCESTER, MASS.

"Ed"

K. D. P. (1) (2) (3); Pres.; Academy of Science (1) (2); Dramatic Club (1) (2); Music (Orchestra and Band) (1) (2) (3); De La Salle (1) (2) (3); Class 1932 JH Pres.

Here is a man who seems to be a leader. He has ability and uses it, he has personality and uses that also. "Ed" is president of his frat and president of his class. Keep up the work, "Ed," and we'll see your name in the hall of fame.

STEWART D. THOMPSON, STEWARTSTOWN

"Pat"

The blonde boy from the North Country! "Thompy" has always been a quiet lad in spite of the proximity of his home to the Canadian border. He's a conscientious student and staunch supporter of the feminine element of the school.

RENA ALESIA TORREY

Keene Club (1) (2) (3); Leathercraft (3).

Introducing:

A petite miss with snappy brown eyes, a winning smile, a spirit of joviality and a friendly personality. Rena is a sure proof that it isn't quantity, but quality that counts. Although she is a town girl, she is really an adopted member of first floor Fiske gang.





ARLENE FRANCES TUCKER, PORTSMOUTH

"Betty", "Tucky"

Varsity Hockey (2); French Club (2); V. W. C. A. (1) (2) (3); Academy of Science (2) (3); Division Basketball; Life Saving (2).

"Betty" possesses that priceless quality which allows her to work when it is the time for work, and play when it is the time for play. If her training at Orford is an indication, we may safely say she is well on the road to success!



GILBERT L. TUSON, MANCHESTER

"Gil", "John"

Varsity Football (1) (2) (3); Varsity Basketball (2); Class Basketball (Coach) (2); Intra-Mural Basketball (3); Class Baseball (2); Assistant Varsity Baseball Manager (1); Kappa Delta Phi (1) (2) (3); Academy of Science (1); Intra-Mural Athletic Committee (1).

"Gil" is noted for his preference for blondes and for his prowess on the gridiron and basketball court. He has been the central figure in the last two. "Gil" has been a leader on campus and we hope he will continue to be in the center of things.



LOIS PRISCILLA WARE, LEBANON

"Lois"

Interclass Baseball (1); Interclass Hockey (2).

"Lois is meek, Lois is sweet;
Lois is modest and discreet;
Lois is rare, Lois is fair;
Lois is every way complete."



BERTHA WILLIAMS, KEENE

"B"

Keene Club (1) (2) (3); French Club (2).

Some people's hidden sense of humor surprises us when we know them better. Bertha's dignified poise hides hers, but we who know her can tell you differently.



JOHN EDWARD WRIGHT, KEENE

"Jack", "Little John"

Kappa Delta Phi (1) (2) (3); Junior Dramatic Club (1); Track Team (2).

"Large bodies move slowly."

One has but to know "Little John" to realize the falsity of this statement. Witty, scholarly, comedian-de-luxe, a lover of the fair sex, and excelling in the art of terpsichory—all these belong to "Jack". If there is one defect due to halt his career we prophecy it will be his fascination for Bridge. May your sense of humor never forsake you, John, as you enter upon your chosen profession.



EVERARD DOUGLAS YOUNG, FRANKLIN

"Skip"

Football (1) (2) (3); Basketball (1); "K" Club (1) (2) (3); Alpha Pi Tau (1) (2) (3); Master of Ceremonies (3); Academy of Science (1).

All of us cannot be as happy-go-lucky as "Skip" has been,—it is an asset most of us cannot boast of having. Not only in school, social, fraternity, and club life did "Skip" excel, but also as a teacher, into which profession he now goes forth to put into practice these bits of wisdom.

1932

FRANCES R. HICKFORD, MANCHESTER

"Frag"

Manchester Club (1) (2) (3); Art Club (2) (3).

That criterion on what to wear and when—Queen of the Palette and Brush—to say nothing of sarcasm. (We don't need to.) Vogue Model 1933.

CAROL OLIVE HALL, PORTSMOUTH

Class Basketball (1); Art Club (2) (3).

Halt! Who comes thither? An Artist upon mine soul. The love of light and color is in her eyes—the soul of the painter shineth through. She doeth good unto others, her name is fair among men. Pass on—thou art approved of the Gods. Fortune smileth on thee!

PAULINE LILLIAN ROBY, BELMONT

"Polly"

Forum (1) (2) (3); Varsity Debating (3); Kronicle Board (3); Art Club (2) (3); President (3).

"Polly" has been an excellent classmate, and we are proud to have had her with us for three years. She is very quiet, but under this quietness lies much ability. We will always remember "Polly" as a jolly good friend who was "always ready". She is one of our active members of the Forum and the debating team.

HILDA WOLCOTT, CLAREMONT

"Tilly", "Freckles"

Art Club (2) (3); Division Hockey (1) (2); Tennis Champion (2); Nature Club (1); Senior Life Saver (2) (3); Division Basketball (1) (2); Division Soccer (1) (2).

In class, so modest and retiring you scarce would know she's there. But just give her a paint brush, tennis racket or invitation to a Ball and "Tilly" instantly becomes most popular of all.

—:—

Music Supervisory Course

BLANCHE CORA BAILEY, SUNAPEE

Orpheus Club (1) (2) (3); Chairman Program Committee (3); Orchestra (1) (2) (3); Band (3); Glee Club (1) (2) (3); Librarian (1); Keene Chorus Club (1) (2); Kronicle Board (3).

To see Blanche volunteering in class, or setting up the stands for orchestra, or getting up early to practice, or directing in Chapel, you'd think she never had a frivolous thought. But did you ever go to one of her parties? Such delicious concoctions you get mixed and flavored with squeals, practical jokes, wit and giggles!

DOROTHY MARY BARNES, HAVERHILL, MASS.

"Dot", "Dot"

Glee Club (1) (2) (3); Orchestra (1) (2) (3); Instrumental Trio (1) (2) (3); Orpheus Club (1) (2) (3); President (3); Keene Chorus Club (1) (2); Y. W. C. A. (1); Social Committee (3).

"It's nice to be natural when you're naturally nice."

"Dot" is one girl who lives up to the meaning of the phrase "Lovable and Sweet". Pablo Casals had better look to his cello laurels when "Dot" and "Big Ben" comes across campus.

"Her little tongue is never still, talk it must, and talk it will." (especially at night, says her roomie).





1932

MARGARET BONNETTE, KEENE

"Peg"
Glee Club (1) (2) (3); Keene Club (1) (2) (3);
Orpheus Club (1) (2) (3); Orchestra (1) (3); Keene
Chorus Club (1) (2).
Did you ever hear "Peg" play the piano and watch
her fingers dance over the keys? She has a fine sense
of humor. We think she is very kind and generous
and you will agree when you know her.

HAROLD EUGENE EDGERLY, ROCHESTER

"Ezra"
School Band (1) (2) (3); School Orchestra (1) (2)
(3); Boys' Glee Club (1) (3); Keene Chorus Club
(1) (2); Brass Quartette (1) (2); Camera Club
Treasurer (2); Orpheus Club (1) (2) (3); Kappa
Delta Phi (1) (2) (3); Boys' Dance Orchestra (1).
Small, but energetic, Harold has earned the just re-
ward for serious effort. We will ever remember him
for his musical ability, pluck, determination and stud-
ious ways. And is he convincing? Just ask him what
he thinks of jazz in this "Our Modern Age"!

A. KATHERINE JOSSELYN, LUDLOW, VT.

"Kaye"
Keene Chorus Club (1) (2); Glee Club (1) (2) (3);
Orpheus (1) (2) (3); Art Club (3); Division Hockey
(3); Orchestra (1) (2) (3); Senior Life Saver (2)
(3); Division Soccer (1) (2).
"Kaye" knows how to sympathize, which is saying a
lot. With that goes the faculty for giving sound
advice. Why is it that some people always give the
wrong impression? We B. U. S. members, and others,
too, know that "Kaye" stands for honesty, straight-
forwardness, constancy. Don't mind the absent-minded
look. Like grapes, "there's a reason."

CINDA LACLAIR, SAXTONS RIVER, VT.

Glee Club (2) (3); Vice-President (3); Orpheus Club
(1) (2) (3); Secretary-Treasurer (2); Vice-President
(3); Keene Chorus Club (1) (2); "Belle of Barce-
lona"; Chapel Choir (1) (2); Double Quartet (3).
She breathed a song into the air
It fell to earth, she knew not where
And though in her search, a'far she may roam
O'er mountain and valley, o'er billow and foam
She'll find her song from beginning to end,
Locked deep in the hearts of the 3 H. M.

MILDRED ROSE MOORE, GREENFIELD, MASS.

"Mickel"
Orchestra (1) (2) (3); Glee Club (1) (2) (3) Presi-
dent (3); Orpheus Club (1) (2) (3); Chapel Choir
(2) (3); "Belle of Barcelona" (2); Trio (2) (3);
Keene Chorus Club (1) (2).
Musical "Milly" as we all know her
Interested mainly in things pertaining to music and
Loveable, no one ever saw her otherwise
Dimpled, oh what a smile!
Reliable, although sometimes late.
Efficient, in all things
Desirable, K. H. S. hates to see our friend and pian-
ist leave.

DOROTHY A. SOULE, MANCHESTER

"Dot"
Orchestra (1) (2) (3); Glee Club (1) (2) (3); "Belle
of Barcelona" (Head); Orpheus Club (1) (2) (3);
Art Club (3); Junior Dramatic Club (2); "The Play-
goers" (Head); Senior Dramatic Club (3); The Ro-
mantic Age" (Head); Keene Chorus Club (1) (2);
Chapel Choir (2); Double Quartette (3); Atwater Kent
Audition (2).
A most perplexing combination of abilities is "Dot".
We cannot forget her singing "Little Boy Blue"; some
of us will remember her own "Dreams, Only Dreams",
and "The Brooklet". "Dot's" original songs, poems, and
prose are expressive of her own cheerfulness and opti-
mism. "Dot" is a peculiar medley of originality, with
vivacity, generosity and sympathy. She seems versed in
the art of making people happy. Surely she will never
lack friends.

TERESA C. VERCAUTEREN, MANCHESTER

"Tree"

Orpheus Club (1) (2) (3); Orchestra (1) (2) (3);
Glee Club (1) (2) (3); Keene Chorus Club (1) (2);
Manchester Club (1) (2) (3).

"Tree" is another who receives our admiration. It is a rare gift to always look one's best and to have a smile ready for everyone—but she fulfills all this. When we think of "Tree" we are reminded of music and an enviable blond.

Three Year Elementary Course

ESTHER E. ALDRICH, LACONIA

"Izzie"

Nu Beta Upsilon (2) (3); Phi Sigma Phi (1) (2) (3);
De La Salle (1) (2) (3); Rural Club (2); Varsity
Basketball 1; Stunt Club (2); Freshman Baseball
Team (1).

"Izzie" may seem quiet at first, but she is full of fun and one of the best of friends when you get to know her.

CHARLOTTE E. DAVISON, WOODSVILLE

"Charly"

School Orchestra (1) (2) (3); Girl's Orchestra (2) (3);
Glee Club (2); Keene Chorus Club (1) (2); Hockey
Team Varsity (2); White Hockey Team (3); Nu
Beta Upsilon (2) (3); "K" Club (3); V. W. C. A.
(2) (3).

"Where there is a will there's a way!"

Those who know "Charlie" have found her carefree, friendly, jolly yet efficient and responsible. She is never worried or troubled but has some solution for every problem—either her own or others. Charlotte is the teacher both for the community as a whole and for the boys and girls in it.

Best of luck, Charlotte.

MARY HELEN DEAL, PORTSMOUTH

"Dynamite"

Rifle Club (1) (2); V. W. C. A. (1); Nu Beta
Upsilon (2) (3); Freshman Basketball Champions
(1).

Who hasn't heard of Helen? Well, you've missed something. Right on the surface you can tell she's a good sport; and way down underneath, though she may try to hide it, we suspect Helen has just a little of the K. N. S. "it"—Responsibility! After all she has been rather partial to Keene. Are we wrong, Helen, or are we right?

GRACE FRANCES HILLS, ROLLIS

"Gay"

V. W. C. A. (1) (2); 4 H Club (2) (3); Nu Beta
Upsilon (2) (3); Rural Club (1) (2) (3).

Grace is ambitious, dependable, and willing. Need help? Here is Grace. Friendly and good natured too.

LENNIE MAY MESSER, NEW LONDON

Phi Sigma Phi (1) (2); Nu Beta Upsilon (2) (3);
Rural Club (2) (3); Camera Club (2).

"Lenn"

Loyal to her class.
Earnest in her work.
Neat in everything.
Never neglectful.
Interested in her work.
Ever ready to help others.

Mumps—look out for them, "Lennie"!





Two Year Elementary Course

MRS. GRACE ACKERMAN, KEENE

Keene Club (1) (2); Wheelock Parent Teacher's Association (1) (2).

Grace is one of our town girls and we miss her on campus this year. She certainly entertains well. Just ask the "Brickies" of '30-'31. May all the success in the world be yours.

NATHALIE S. AKERS, EBBOL

"Nat"

Rural Club (1) (2); Nu Beta Upsilon Sorority (1) (2).

Just a little bit more happy
Just a little bit more glad—
That Nathalie came to K. N. S.
For she's one of the nicest we've had.

ALTHEA CATHERINE ALLEN, WEARE

"Al"

Rural Club (1) (2).

As a freshman how quiet "Al" seemed. But she came back to us with her hair cut—what a change there was in our "kid". We hope she'll give her pupils as much fun as she's given us on third floor.

ANNABELLE ALLEN, CONCORD

"Ann"

Rural Club (1) (2); Y. W. C. A. (1).

Who is this petite ma'm'selle? Why the "belle" from Concord of course. We won't forget your quick smile and lovable nature, "Ann".

MINNIE ELINOR ANDERSON, MILAN

"Andy"

Class Basketball (1) (2).

Who is that girl who always has a smile? Why that's Minnie. We don't see much of her over the week-ends. I wonder where she goes. Minnie is a good sport and always willing to help her friends.

IDA MARY BASCOM, DOVER

De La Salle (2); Rural (1); Nu Beta Upsilon; Treasurer of Senior Elementary Class.

A real friend and pal—
Someone who laughs the blues away,—
A good sport on field and court.
We've found all these in Ida.
Good luck to her.

BERTHA RUTH RICKFORD, EAST ROCHESTER

"Bicky"

"Bick" always has a pleasant word for everyone. She is full of fun and proves the truest of friends. Surely with these characteristics she will stand high on the ladder of success.

INA RUTH BOMBARD, LYME

"Bammie"

She only joined our gang this year but how soon she made herself liked! How could she help it with her "peppy" nature and cheery smile? We know that she will always be as successful as she has been in the past.

DOROTHY JEANETTE BRITTON, WALPOLE

"Dot"

De La Salle (2); Rural (2); Nu Beta Upsilon (2); President Senior Elementary Class (2).

No one is endowed with a more charming personality than "Dot". We will always remember her for her sparkling wit, sincerity, and unassuming pleasantness.

HILDA AUGUSTA BROOKS, EBBOL

H—appy Hilda with a smile,
I—ntrigues us—she's so friendly,
L—ives in Huntress Hall the while,
D—resses so originally,
A—all of us like Hilda.

HELEN C. BROWN, LAWRENCE, MASS.

"Brown"

De La Salle (1) (2); Massachusetts Club (2).

One of those quiet girls with a dry sense of humor, which she uses when she knows you. Do we like blondes? Helen will be missed on campus next year.

FRANCES ERNESTINE BURNHAM, HARRISON, ME.

"Sunny"

Glee Club (1) (2); Orpheus Club (1) (2); Operetta (1); Orchestra (1).

Her disposition and her smile spell her name ("Sunny"). Her personality is like that too. That is why she is a good friend. Loads of luck "Sunny".





CAROLYN RICE BRUNEL, CONCORD

"Cally"

V. W. C. A. (1) (2); Phi Sigma Phi (1); Forum (1) (2); Nu Beta Upsilon (2); Rural (2).

"Cally" is the one to whom "Dot" Lord's popularity was left and she has certainly filled her contract. Even N. H. U. claimed her for several week-ends. What will "Long Hall" do without its fourth at bridge.



LOUISE FILOMENA CHIARELLA, BURLIN

"Lou"

De La Salle Club (1) (2); Rural Club (2); Nu Beta Upsilon Sorority (2).

"Once known never forgotten."

"Lou's" whole heart is in everything she does—making friends and keeping them. There's a twinkle in her eye, and a flash in her smile that's well worth remembering. And "Lou,"—we really did enjoy your tap dancing.



MARJORIE EVELYN CLARK, MARLBORO

"Marge"

Even though Marjorie commutes she is always here in rain or shine. Those who have been Marjorie's friends have appreciated her wonderful sense of humor.



RUTH E. COLCORD, PLAISTOW

"Ruthie"

Rural Club (1) (2).

"Ruthie" is one of these "lucky girls". She is composed of so many good qualities that it makes it hard to define her. It is only doing her partial justice to say that her sincerity and honesty in her work and play at K. N. S. has secured many friends for her.

We know your work will be a success; and we hope that some day you will find something that you can not do just so that you will have to work a little.



HAZEL FLORENCE CONNOR, HENNIKER

"Shrimpy"

4-H Club; Rural Club.

Short and snappy—always happy!

Lucky are those who call her friend.

Just imagine her dignity as she presides over a one room rural school. Yet we are aware of the fact that she has an outside interest.



ANNA MARIE COURTEMANCHE, LEBANON

"Ann", "Ceat"

De La Salle (1) (2); Glee Club (1) (2); Keene Chorus Club (1); "Belle of Barcelona".

Objective: To make a dignified school teacher.

Pupil activity: Interest and one hundred percent response.

Approach: Courage, vim, vigor, and pep.

Problem: Tries to keep everyone in good humor.

Summary: We are all glad to have had the opportunity of knowing Anna.



1932

ISABEL A. DAVIS, AMHERST

"Jazy"

Rural Club (1) (2).

I is for her initiative—she has plenty.
S is for the success we know she'll have.
A means she's able to accomplish all she attempts.
B means she's busy—just ask her room-mate.
E is for the enthusiasm she shows in all her work.
L means that she's liked by all.

IRMA MARRIETTA DeCAMP, CLAREMONT

V. W. C. A. (1) (2); Division Basketball (1) (2);
Nu Beta Upsilon (2).

Irma, with her collection of "wild" animals, will be missed from the second floor of Huntress. Best of luck in two family schools.

DORIS ELSIE DENT, CROYDEN FLAT

"Dot"

Rural Club (1) (2); Vice-President (1); President (2).
Doris is a quiet and unassuming girl. She is a very faithful and diligent worker in classes, but outside she has proven to be a very interesting entertainer.

FLORA JACKMAN DINSMOOR, LACONIA

"Jackie"

"Belle of Barcelona" Operetta (1); Class Basketball Team (1); Division Basketball Team (1); Varsity Basketball Squad (1); Rural (2); Nu Beta Upsilon (2); Year Book Staff (2).

I—is just "Jackie". "We like her," you say.
A—is attractive. Just look at her now.
C—is she competent? Both in work and in play.
K—is for kind. We know that, and how!
I—is intrinsic. She's genuine and gay.
E—she's so earnest. You'll have to allow.
Just six little letters, but "Jackie" they spell
I know you're all glad to know her so well.

FRANCES E. DOWNING, WEARE, Vt.

"Fran"

Rural Club (1) (2).

"Fran" is five feet tall,
Her eyes are bluest blue.
She has the sweetest smile—
For a "grin" would never do.

Lots of luck "Fran", we know you'll succeed.

FLORENCE LOUISE EASTMAN, SOUTH LYNDENBORO

"Lou"

Rural Club (2).

Louise is one of our shy, quiet girls with plenty of ambition. Her sunny disposition has won for her many friends at K. N. S.





CHARLOTTE MARIA EATON, SEABROOK

"Shy"

Camera Club (1); Nu Beta Upsilon (2).

Do you know "Shy"? You don't? Then I guess you haven't been at K. N. S. "Shy" is the one who helps the cheering along at the basketball games. "Shy" is small, sweet and always smiling. Best o' luck, "Shy".

ELIZABETH ELLINGWOOD, LITTLETON

"Betty"

"Betty", a girl with very dark hair,
Who does her work with a great deal of care;
Has made a promising school career.

ALICE CHRISTINE FELT, THOMASTON, ME.

"Pat"

P—at is a person who's
A—lways good natured and
T—akes life as it comes along.
F—rolisome
E—arrest
L—ively and likeable
T—hats what "Pat" means to us."

WILLIAM OSCAR FRAZER, WORCESTER, MASS.

Rural Club (2); Keene Chorus Club (1); Choir (1) (2);
Dramatic Club (1) (2); "The Playguers"; "The
Belle of Barcelona".

Oscar, big, strong and quiet has certainly filled his place in Keene Normal. What would the Operetta have been without him? Has he helped the Dramatic Club? Well I should say! We are sure Oscar will be a success in whatever he undertakes.

BERTHA IDA GAUTHIER, KEENE

"Be"

Keene Club (1) (2).

As Bertha is a Keene girl many have not had the opportunity to become well acquainted with her; but to those who know her she is a great pal.

DOROTHY ELEANOR HALL, NASHUA

"Dot"

Forum (1) (2); Junior Dramatics (1); Senior Dramatics (2); Nu Beta Upsilon Sorority (2); De La Salle (1) (2); Rural Club (1) (2).

"Dot" is another member of that 3rd. floor gang. Ask "Dot" if she likes to play "Murder". We would say that she does. We all think that "Dot" will be a sweet school teacher and are sure all her pupils will love her. Can they help it?

FRANCES E. HALLISEY, NASHUA
"Fran"

De La Salle (1) (2); Dramatic Club (1) (2).
"Napoleon was small."

Introducing our efficient little secretary! Studious and conscientious, but two bright eyes suggest her fun loving nature.

"Fran" has two ambitions other than the one centered in Northeastern. The first being—To be a successful teacher and the second to own a bright, red roadster. We know the first will be realized and we're all pulling with you for the second, "Fran".

ALICE PEARLE HILL, GOFFSTOWN
"Al"

4-H Club (1) (2); Rural (2); Y. W. C. A. (1).

Alice is one of the girls who has always had an interest in N. H. U. Why? Ask Alice. Alice has a disposition which will take her a long way, ask her roomie, she'll tell you.

ROBERT LEANDER HILL, PLAISTOW
"Bob"

Rural Club (1) (2).

"Bob" hails from Plaistow, N. H. He has always called himself "one of the two out of twenty-five", the other one was Oscar and the other twenty-three were girls of Div. B. "Bob" always made classes interesting.

MARION ELEANOR HILLIARD, CLAREMONT
"Mink"

Rural Club (1) (2).

"Her voice was ever soft, gentle and low.
 An excellent thing in women."

1 cup of cheerfulness
 2 cups of fun
 1 tsp. of wholesome humor
 A dash of seriousness

Mix together with a pleasant smile 'till you see Marion's face peeping through.

How we all loved to gather round and listen to her sweet voice harmonize with "Midge". Happy landings to you "Minkie".

ELEANOR DOROTHY HOLLEY, GREENLAND
"Mickey"

Glee Club (1); Nu Beta Upsilon (2).
 Petite "Mickey" of Portsmouth High
 Cast her lot with K. N. S.
 With a tang of salt air
 In her auburn hair,
 And a dream of Russell we'd guess!

Brick House last year knew her as a feminine "crooner" of all Rudy's latest hits. This year on 3rd, floor Huntress she's still crooning—and always boosting Portsmouth and the beach.

"Mickey," why do you prefer "Mac" apples?

ESTHER HUNT, CONCORD
"Est"

Rural Club (1) (2); Home Economics Club; Nu Beta Upsilon (2).

Esther is one of our outstanding blondes.

To many she seems very quiet and reserved, but to her closer friends, who are carefully picked, she is very faithful and entertaining. We know her future spells success.





BEATRICE HELEN JEFFREY, WEST SWANZEY

"Be"

"Be" is one of our commuters and thus we have not had the opportunity to know her well. She is quiet and reserved, but her classmates tell us that she is good company.

EVA DORIS JOHNSON, CLAREMONT

Rural Club (1) (2).

To some, Eva seems to be rather quiet but to those who know her better she is always ready with a bit of humor. Eva is always ready to help when help is needed. Here's wishing you success, Eva.

BLANCHE LILLIAN JOVAL, METHUEN, MASS.

De La Salle (1); Nu Beta Upsilon (2).

Blanche is a girl with a fun-loving disposition. She may seem rather aloof at first meeting, but when you know her, she's right there ready for fun. Is she a critic? Ask the girls in her various classes. That's her secret ambition. To be a critic. Best of luck to you, Blanche.

ANNA KANDILIS, MANCHESTER

"Anne"

Rural Club (1); Manchester Club (2); Stunt Club (1); Nu Beta Upsilon (2).

"Hath a jolly disposition."

A laugh, a noise, and a bang—it's Anna. Two lively feet, a winning personality, smiles through clouds—it's Anna again.

ALICE MYRLE KINNEY, GRAND ISLE, VT.

She's one of the best friends anyone could have and if you ever feel blue she's the one to cheer you. Her sense of humor and love for fun have won her many friends at K. N. S.

MAY EMILY KNIGHT, LERABON

"Mickey"

Rural (1) (2); Nu Beta Upsilon (2); Y. W. C. A. (2).

We wonder at "Mickey's" repeated absence week-ends! We marvel at her remarkable wit and ability to keep that "poker face". We greatly admire her manner around the campus. But if we knew none of these, we could not attend Keene Normal without knowing it's Greta Garbo!

LILLIAN ANN LAVERY, LAWRENCE, MASS.
"Lill", "Lav"

De La Salle (1) (2); Treasurer (2); Senior Dramatic Club (1) (2); Massachusetts Club (2).

Lillian is one of our Massachusetts girls and does she boom her state? We are sure that Lillian will be an efficient teacher. She is going to be missed in Fiske next year.

THELMA LEONARD, NORTH POMFRET, VT.
"Theo"

Rural Club (2).

Whenever we hear a cheery whistle down the hall we know we'll soon see "Theo". Did you ever see her hard? We have never had that privilege and we know her pupils never will. Needless to say, we wish her the best of happiness and success.

MARTHA ABBY LORD, DUNSTON
 Manchester Club (1) (2).

Poise and dignity, together with cheerfulness and a sense of humor make Martha an ideal pal and roommate. Although she has a quiet manner her pleasing personality has won for her many friends.

LILLIAN GERTRUDE LOWRY, WHITEFIELD
"Lil"

Y. W. C. A. (1) (2); Rural Club (1) (2); Nu Beta Upsilon (2).

One of the many serious and quiet girls, but with a sunny and cheerful disposition. If you need a good friend you'll find one in Lillian. Does she have wisdom (teeth)?

EILEEN MARY MARTIN, MANCHESTER
"Midge"

Manchester Club (1) (2); De La Salle (1) (2); Rural Club (2).

"Tis the songs ye sing and the smiles ye wear,
 That's making the sunshine everywhere.

M—Merry
 I—Industrious
 D—Dear
 G—Graceful
 E—Everything to us.

KATHERINE MARY MOHER, NASHUA
"Kay", "Moher"

De La Salle (1); Rural Club (1) (2); Secretary (2).

Who drives the blues away?
 That's "K".
 Whether you're mad, or whether you're sad,
 Go to "K", she'll make you glad;
 That's "K".





1932

OLIVE GARTH MOULSON, WARRE, MASS.
Junior and Senior Dramatic Club (1) (2); "K" Club (1) (2); Rifle Club (1); Chapel Choir (1); Senior Life Guard (1) (2); Nu Beta Upsilon (2); Massachusetts Club (2).

Is she good-looking?—Yes.
Is she smartly dressed?—Yes.
Is she popular?—Yes.
Is she peppy?—Yes.
Is she a promising teacher?—Yes.
Is she to be missed?—Yes! Yes! Yes!
My word! Who is she?—Olive.

SARAH PATRICIA MULLEN, MANCHESTER
"Pat"

Dramatic Club (1) (2); Secretary (1); Nu Beta Upsilon (2); De La Salle (1) (2); Manchester Club (1) (2); Treasurer (2); Rural Club (1) (2); Senior Life Saver.

Peppy and how!
A speaker always and now—
True blue to the end—
Ready to smile at every trial.
Is as sweet as she looks—
Can skate, dance, and what not?
In every worthy cause—
A friend to all!

DORIS CARRIE NELSON, MILL VILLAGE
"Dot"

Rural Club (1) (2); Glee Club (1); Keene Chorus Club (1).

"D" stands for diligent—and that's one thing Doris was, although she was also diplomatic, dutiful and dynamic. She spent a great deal of her time in the library, but when out of it forgot her woes and enjoyed a good time. Her work kept her pretty busy and some may have missed knowing her and appreciating her sunny smile and good nature which others enjoyed.

HELEN SARAH NELSON, MILL VILLAGE
Rural Club (1) (2); Glee Club (1); Home Economics Club (Nu Beta Upsilon) (2).

Why was third floor of Huntress dull during second nine? Because Helen was out rural. We missed her jolly smile and know it will win her success in years to come.

MARIANNE ROGERS NICHOLS, RUTLAND, VT.
"Nick"

Chapel Choir (1); Rural Club (1) (2); Division Basketball (1); Division Hockey (1); Nu Beta Upsilon (Home Economics Sorority) (2); V. W. C. A. (1).

"Nicky" and "Al"! Who could forget our little blond couple who look like brother and sister? We don't know what "Al" will do when she graduates. He'll probably be like the rest of us: "Remember her charm, and you'll never forget." Third floor Fiske will sure miss her. She's bubbling with life and with her sparkling wit and humor has made herself beloved by many.

RACHAEL ELIZABETH PAIGE, So. HAMPTON
"Rae"

Junior and Senior Dramatic Club; Glee Club (1) (2); Chapel Choir (1); Nu Beta Upsilon (2); Kronicle Board; Year Book Staff (2).

R—are qualities.
A—fter the best in life (and will get it.)
E—quipped with sense and sweetness.

P—ersonality!
A—ilities uncouncted.
I—mmaculate
G—ood teacher, too.
E—xchange her? Never!

LUCY PATRIA, TROY

Lucy commutes twenty miles daily. This shows us that she has an abundance of courage. She is exceedingly fond of athletics, which tells us that she is a good sport. All of these qualities will coincide with your choice vocation, Lucy.

REBECCA FARR RICHARDSON, LITTLETON

"Becky"

Glee Club (1); Rural Club (1) (2); Division Hockey (1).

We hear musical laughter, see blond curls blown by the wind, and then two bright, sparkling blue eyes tell us it is "Becky". We envy her future pupils, for life in "Becky's" school will be a happy one.

FLORENCE LOUISE ROBBINS, GREENVILLE

"Flo", "Robby"

Camera Club (1); Rural Club (2).

We always find "Flo" ready to talk about a certain somebody. How about your letters? Hope you will be as happy in years to come as you have been in the past. Best of luck, "Flo".

DOROTHY BRUCE ROBINSON, MILFORD

"Dot"

Division Basketball (1); Nu Beta Upsilon (2).

We'll always remember "Dot" for she was an all-around good sport; loved by all who knew her; and always ready for fun. "First in war, first in peace, and first to the aid of those who need her." Wish you all the success in the world.

BEATRICE SLATER, METHUEN, MASS.

"Be"

"Be" certainly is a favorite.
Never hurries, always late;
But she smiles, and so we wait.

HELEN E. SPALDING, PLAINFIELD

"Jerry"

Y. W. C. A. (1) (2); Forum (1) (2); Junior Dramatic Club (1); Senior Dramatic Club (2); Ride Team (1);

"K" Club (1) (2); Nu Beta Upsilon (2).

Take a blue eyed, brownhaired girl, mix with a full measure of Personality, sprinkle with Pep, put in a good measure of sweetness and vivacity, stir well with the ability to dance well and you have "Jerry".





ELTHEA H. KNOWLTON SPEAR, METHUEN, MASS.

"El"

Phi Sigma (1) (2); Division Basketball Team (1) (2).

A charming personality,
Full of life, laughter and fun,
Is it a wonder she's loved
By everyone?

DOROTHY LUCY STANLEY, MANCHESTER

"Dot", "Dotty"

Manchester Club (2).

She isn't very large—
She isn't very tall—
But what she lacks in size,
Herself makes up for all.

MILDRED MAY STARKEY, FITZVILLIAM

"Milly"

We've missed a fine pal not having "Mil" with us all
the time. However, we found out one thing: "Mil"
must be of the finest, to stand the hardships of com-
muting and still be one of the best natured girls here.
Thanks for that helpful smile—don't ever lose it.

ELIZABETH ANN THORPE, PIERRE, S.D. DAKOTA

"Betty"

No Beta Upsilon (2).

A beautiful smile, a western accent, frankness to
knock you down, South Dakota's hospitality.

In person—"Betty" Thorpe!

IRENE TUPPER, CLAREMONT

"Dee-Dee"

Rural Club (1) (2).

How many hours have we gazed at Irene taking those
boring lecture notes down in that mysterious and awe-
some code of signs known as shorthand? It's magne-
tism has drawn us to a girl we have learned to like.
Quiet and restful, we find her company most interesting.

MARGARET ELEANOR WAITE, DUNBARTON

"Peg", "Peggy"

Rural Club (2); 4-H Club (1) (2); President (1).

Is "Peggy" smart?
Can she cheer us up?
Does she take care of us?
Can she teach school?
Do we like her?
There's just one answer—Yes!

VICTORIA POORE WAITE, DUNRAKTON

"Vic", "Viky"

Y. W. C. A.; Junior Dramatic Club; Senior Dramatic Club; Forum (1); 4-H Alumni Club; Rural (2); N. B. U. (2).

Can we forget "Vic" as a freshman: always late, forever doing her hair up in class, and still finding time to answer those bothersome questions. No, nor can we forget her as a dignified senior with a big load of pep, humor and enthusiasm. "There's many a smile ye've brought to our faces and that we'll be thankin' ye for."

MURIEL FRANCES WOODWARD, PORTSMOUTH

Dramatic Club (1) (2).

Do dimples and dignity go together? Be careful of those dimples in school, Muriel. She may be rather quiet in classes, but she isn't at bridge parties and we know she won't be while teaching school.

CLARIE JOSEPHINE ZANES, PITTSFIELD

"Claire"

Rural Club (1) (2); Treasurer (1); Y. W. C. A. (2); 4-H (2).

She's the kind you can't get to know all at once. There's always a surprise awaiting you.



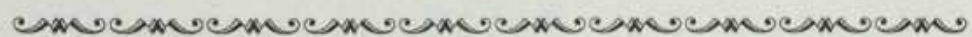
Memories

Memories brought by a summer breeze
Ghosts of dreams dancing in trees.
Tripping and swaying lightly along—
Little devils that robbed me of song—
Ever and ever they taunt me still!
Tantalizing with the same old thrill—
How they led me to laugh and forget—
Now there's but life—and regret.

—Eugenia Lambert, '33.



Senior Autographs



LOVERS RETREAT



HUNTRESS HALL



FISK HALL

CAMPUS CUTS

NOTED



EDWIN MARKHAM



ROSE NIGHT



NICHOLAS BLOMBERG



BEN GREET

GUESTS



WALL FLOWERS



JUST AFTER CLASS



BLAKE HOUSE



VACATIONAIRS

Souvenirs of Edwin Markham

(From his visit to K. N. S. Nov. 2, 1931)

What optimist of life's future path,
What oracle, of olden days renown,
Could have foretold that I would see and hear
A man, whose whitened hair bespeaks of age,
Who "never reads time, but reads eternity?"
Is this a man who brings a ray of light,
And leaves a spot of warmth in the heart,
Whose benevolent manner pervades the air around
With images of shadows and of lights?

He speaks, and we see with eyes that are uncovered:
The blossoms nod in joyous whisperings.
We see Mother Nature creating lovely beings
Which man o'er-looks in search of lesser gains.
He speaks of language among the beasts
Which dwell upon the earth, in sea, in air.
He speaks of their sorrow, love and play,
As they pursue the tasks which life has set!

Is this a man, or merely a mind
To which the great Creator has attached
A body bearing likeness to ourselves?
Will he wither, fade, and die away,
Leaving only ashes to us who stay
And reap the profits of his toil and pain?

Or will he stay, a mind without a body,
To guide us forever along the careless ways
Set by machines of Brobdinagian size?
Must we mount on pinnacles of steel
Heedless of sufferings of multitudes,
Without his gentle spirit to advise?

Time will tell, as we cannot,
But as for me, I will still emboss
The memories of the man who said to me
"I never read time, I read eternity."

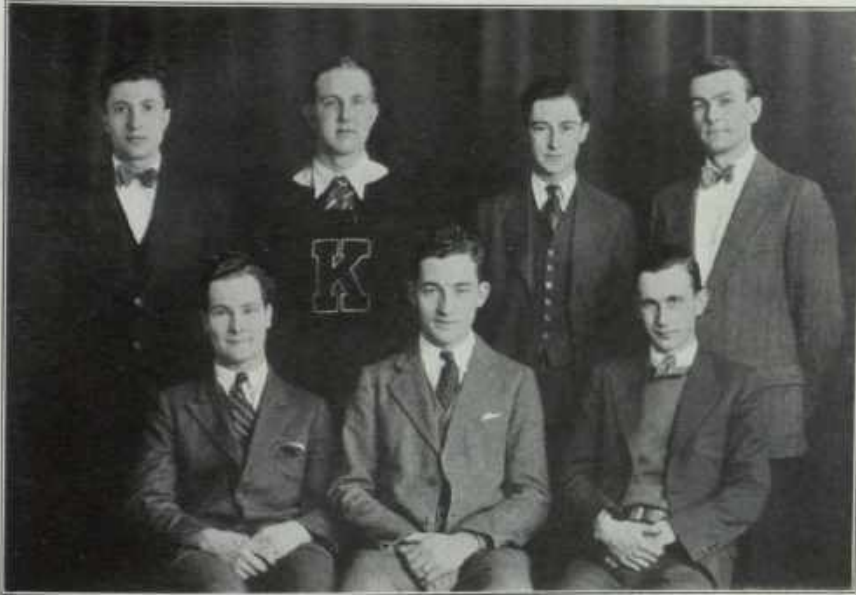
—Raymond Francis O'Neil, '34.



High School Juniors

Back row: Genevieve McGirr, Lee Goodrum, Doris Kimball, Carlton Brett, Josephine Altenau.

Front row: Doris Wilson, Margaret Stearns, Madeline Burpee, Marion Lathe.



Trades and Industries III

Back row: Stanley Adamandares, Robert Ringland, Alfred Mannix, William Gamester.
Front row: Walter Miner, Martin Heffernan, Earl Colbeth.



Sophomore Boys, 2 H. S.



High School Girls II



Trades and Industries II

Back row: George Knox, Edwin Hill, Raymond Crosby, John Matthews.

Front row: Maurice Kalloch, Roger Smith, Francis Tate, Everett Snow, Richard Hebert.

Freshman Home Economics Students



Eleanor E. Humphrey
Class of 1935
Died March 7, 1932

Freshman High Girls

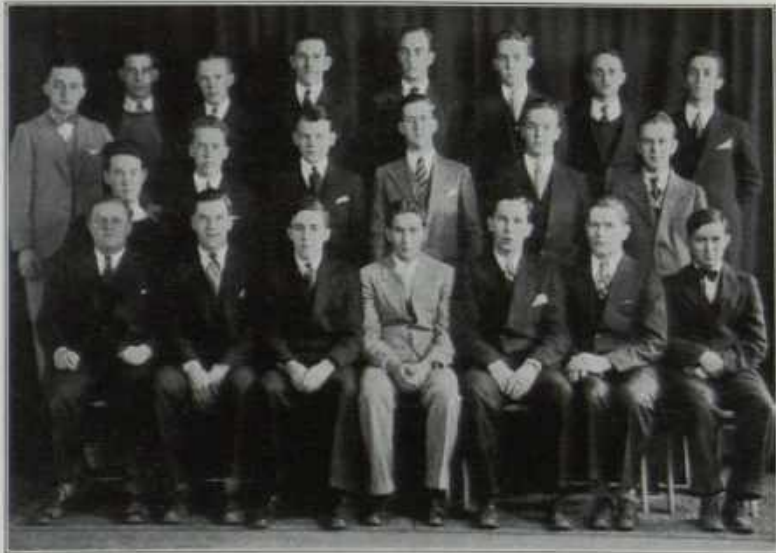


Mechanic Arts I



Back row: Clarence Ginn, Raymond Curtice, Everett Drake.
Second row: Frank Tisdale, Bernard Willard, Robert Domina, Charles Beard.
Front row: Paul Bridges, Emerson MacCourt, Ralph Dusso, Byron Berry, Victor Boccia.

Freshman High Boys



ELEMENTARY COURSE



Division 2 X S

Back row: Lillian Burlock, Marion Atherton, Marion A. Brown, Florence Blanchard, Beulah Perkins.

Front row: Barbara Lane, Helen Hayward, Zoie Abare, Frances Heath, Madeline Nash.



Division A



Division B



Division C



Voice of the Morning

When everything is golden
And streaked with dewy light,
When morning has scarce risen
And left her captive, night,
When flowers ope their mouths
In dumb surprise,
And birds lift on the wing,
There is a voice which seems to speak
From every living thing.
In every flower, every tree,
There are secrets that we
Have never heard,
But listen to the singing bird,
With its carols of infinite love.
The glory of this earth that's linked
With a heaven just above.

—Mildred Holcomb, '33.

OUR RURAL SCHOOLS



LUNCH FOR FIVE



THE ARTIST VISITOR



ALL GO "BELLY BUNT"



A SNOWY SWING



WHO SAID LAKE PLACID?



PLOWING THE CROSSROAD



HITTING THE MARK



NOT SO RURAL

Loyalty

Crash, bang c-r-u-n-c-h—! The log jam was giving 'way! Loud calls, cheers and horrays filled the air. The log drivers leaped agilely, from log to log, to the shore. Broad, satisfied smiles could be seen on their faces. Suddenly a piercing scream rent the air. The smiles disappeared, the shouts ceased—a horrified silence gripped all. Someone was caught in the jam! The hush was one of complete understanding—the terrible truth struck the men and froze them into numbed silence, for they understood that that scream meant death to its owner.

The man struggling out there among the logs was a true lumberman, he did not scream again, he did not call for aid, he would ask no one to risk his life for him. The group on the shore knew the danger to anyone who attempted to reach the victim; and although one or two seemed undecided, the majority made no move to step forward. They knew they would not be blamed for this man's death and that the lumberman's code would not condemn them.

Suddenly all eyes were riveted on a figure picking its way carefully across the logs, from the other side of the river. A gasp swayed through the group and a few low-toned exclamations broke from astonished lips. With bated breath they watched the figure as it crept towards the imprisoned man. A sigh of relief—he had reached him!

The discouraged man looked up, saw his savior and gave a mighty cry. The rescuer silently started to work on the imprisoning logs with his cant dog, moved them aside and lifted the exhausted man from his prison.

The logs were beginning to roll—soon the rush would begin. Not a moment to lose! With the swift surefootedness of a cat the rescuer sped towards shore. Cr-a-ck! The jam had broken! Both men were hurled into the swirling waters below.

The group of men on shore came to life as though by magic. Ropes were brought and thrown out to the rescuer. Both men were dragged to shore and a doctor was summoned. After a thorough examination the doctor declared that George P—, the man who had risked his life to save "Pat" H—, would never walk again. When this decision was brought to "Pat" he was very quiet for a moment; then he threw back his head and made the vow which is still repeated among lumbermen as a declaration of protection.

"I will care for him—he shall never want—he is, from this day, *my* charge, to be protected and to be made happy by me."

—Ellen Marshall, '33.

Fantasy

Rushing along
Singing your song
You gazed upon life as a lark—
Then changed all too soon
A pool 'neath the moon
All Silver and black in the dark—

Eugenia Lambert, '33.



Music Students

Back row: Ruth Forbes, Gertrude Baker, Dorothy Wilder, Donald Kimball, Faith Woodbury, Esther Rickard, Grace Walker.

Second row: Robert Tinkham, Louise Chapman, Cecile Proulx, Miriam Phippard, Dorothy Kane, Sybil Burnel, Ruth Ellingwood, Frances Shaughnessy.

Front row: Dorothy Soule, Mildred Moore, Blanche Bailey, Dorothy Barnes, Theresa Vercauteren, Katherine Josselyn, Cinda LaClair, Harold Edgerly.

Men's Glee Club



<i>President</i>	- - - -	PHILIP BROWN
<i>Vice-President</i>	- - -	LLOYD OLMSTEAD
<i>Secretary-Treasurer</i>	- - -	CHANDLER HURD
<i>Librarian</i>	- - -	ROBERT TINKHAM
<i>Faculty Advisor</i>	- - -	MISS DORIS NEWTON

Feeling the need of a men's glee club in the school, a group of young men gathered together and organized a club.

Possibilities seem unlimited as far as voices are concerned. Rehearsals are held twice a week and plans are being made for a concert tour.

The organization is one which—even in such a short time—is greatly appreciated by the entire school. We wish the club greatest of success and we feel sure they will attain it!

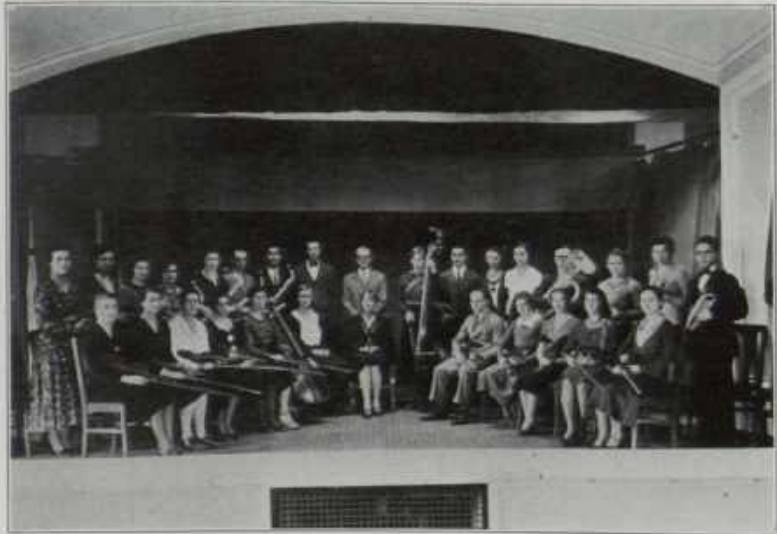
Chapel Choir



Back row: Cinda LaClair, Robert Giraden, Esther Ricard.

Front row: Mr. Davis, Dorothy Soule, Mildred Moore, Ruth Lennartson, Lloyd Olmstead.

School Orchestra



The Girls' Glee Club



<i>President</i>	- - - - -	MILDRED MOORE
<i>Vice-President</i>	- - - - -	CINDA LACLAIR
<i>Secretary</i>	- - - - -	THERESA VERCAUTEREN
<i>Librarian</i>	- - - - -	RUTH ELLINWOOD
<i>Assistant Librarian</i>	- - - - -	FRANCES SHAUGHNESSY
<i>Faculty Advisor</i>	- - - - -	MISS DORIS NEWTON

This organization is made up of members of the music supervisory course and all other students who qualify.

The activities of the club this year center in three major activities: The Christmas Cantata; a choral concert and a commencement community service. Incidental appearances within the school give the club additional opportunity to strengthen the musical standards of the school.

The Orpheus Club



<i>President</i>	- - - -	DOROTHY BARNES
<i>Vice-President</i>	- - - -	CINDA LACLAIR
<i>Secretary</i>	- - - -	FRANCES SHAUGHNESSY
<i>Treasurer</i>	- - - -	LOUISE CHAPMAN
<i>Faculty Advisors</i>	-	MR. DAVIS, MISS NEWTON

The Orpheus club was organized five years ago. It is open to members of the school keenly interested in music. The membership this year is fifty-one.

The objectives of the club are: To be of musical service to the school, to function in its various musical activities, and to broaden the musical activities and background of its members.

The club has sponsored a Valentine Tea Dance; a trip to Boston to the Opera, and a trip to the MacDowell Colony at Peterborough.

In May the annual concert is given. It is the most ambitious program of the year. The performers are all members of the club who strive to present a concert expressive of the musical standards for which the club stands.

Art Department



Back row: Gertrude Cossar, Hilda Wolcott, Frances Bickford, Eldora Wright, Helen Wilkins, Katherine Josselyn, Lois Huntington.

Second row: Barbara Auderer, Dorothy Soule, Robert Tinkham, Albert Brown, Viola Jaastad, Carol Hall.

Front row: Helen Miller, Miss Baird, Pauline Roby, Miss Doane, Charlotte Thibodeau.

Art Club

<i>President</i>	-	-	-	-	PAULINE ROBY
<i>Vice-President</i>	-	-	-	-	FRANCES BICKFORD
<i>Secretary</i>	-	-	-	-	CHARLOTTE THIBODEAU
<i>Treasurer</i>	-	-	-	-	HELEN MILLER
<i>Faculty Advisor</i>	-	-	-	-	MISS BAIRD

The Art club augmented this year by allowing those members of the school who are both interested and capable in art to join the club, limiting the entire enrollment of the club to twenty members.

Besides its regular craftwork which includes leather, copper, batik, block prints and jewelry, the club has been called upon throughout the year to assist in poster-making, decorating, and in sponsoring various activities connected with art, the most outstanding of which was the exhibit of fine masterpieces held in February.

The club plans an annual trip to one of the following places: Maxfield Parish's studio, Cornish; Manchester Museum or Boston Museum of Fine Arts.

Art Students



Back row: Hilda Wolcott, Albert Brown, Frances Bickford.
Second row: Barbara Auderer, Helen Miller, Viola Jaastad, Carol Hall.
Front row: Lois Huntington, Pauline Roby, Miss Jean F. Baird, Miss Lucy Doane, Charlotte Thibodeau.

Art Studio



On Inability in Writing Essays

It becomes evident to me that I must write an essay. When I consider all those young inspired writers who can turn off page after page and send the whole to the waste-basket, either directly or indirectly (through a publisher), and yet so feel the urge to write that they persevere, a sense of shame overtakes me that I can only write by the pricking goad of an assignment, yet who knows—great writers all attribute their place in the sun to an overmastering genius when it may have been an empty stomach, a flattering acquaintance or an unfortunate wife. In view of these stimuli, I have a teacher.

What does one write on when the hour approaches? For one in my situation, the sources are: the corridor that echoes to girlish nothings, the campus dominated even more barrenly with male arrogance or the classroom, wherein doth sit the dread and fear of kings and where a wholesome awe drops upon one's soul. How can these be woven into a tripping masterpiece? My mind sinks back in apathy.

After all, an essay should be drawn, or should be able to be drawn from the rich reserves of the mind. Experience in evading rules, the constant rebounding of one's personality from that of others, as atoms in the atmosphere or one's acquaintance with life from books should furnish material, but somehow they all seem to lack the quickening breath of life. Other writers in like cases have gone to bed, sailed for Europe or filled the cup that cheers, but all these are impossible to me. To be sure, I could go to bed but tomorrow would only be another day and the essay would still be due. Charles Brooks said of a writer who could not write: "If he chew more than an hour upon an unproductive pencil he should bellow for his boots and seek the air." I am just back from a walk. I still cannot write. Perhaps just the magic formula of bellowing for my boots, which necessarily has been omitted, is the cause of my continued inability.

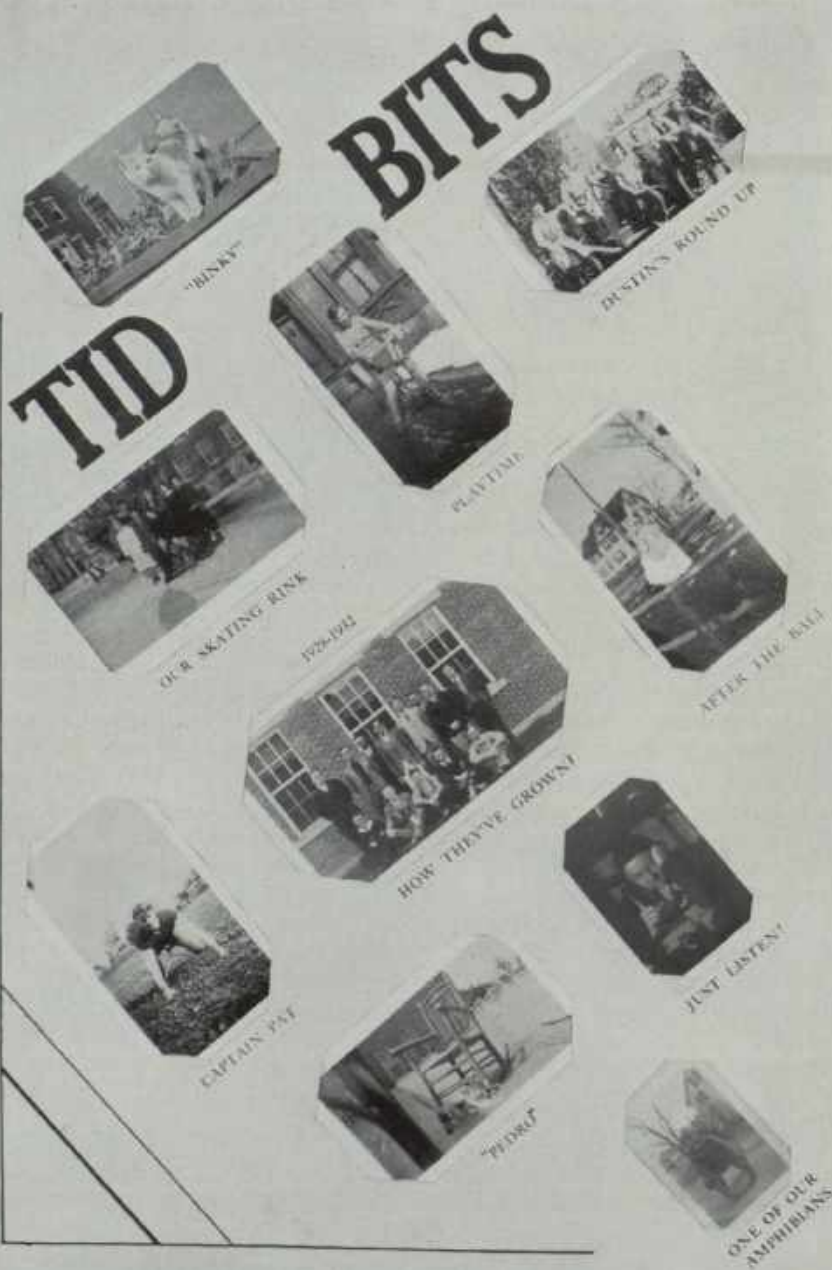
A hope, vague but unquenchable, stirs faintly within me. Younger people than I, older people than I, those of my own age have written essays. There is really no excuse for me. Ah, but logic unconfoundable though it is, if your thoughts start up and away like a flock of frightened birds at the approach of the assignment, you may struggle vainly by the hour.

I have tried waiting for inspiration, for a time when I could be all by my wild lone and coax the circling thoughts down to earth. This is not very effective for too often they turn out to be feeble little disguised things, not thoughts at all. Inspiration is as far away as ever and very scornful.

There is something to be said in favor of not writing essays. There are too many of them already, many of them are either trite or repetitious and are only read to fulfill requirements. The instructor would be relieved of so much boredom if there were no more and, greatest recommendation of all, think what a pleasure it would be to rediscover the art of writing essays at some future time when a new charm and luster had been added to it by lying dormant for a century or two.

Having thus argued not only that I cannot write an essay but also that it would be better for everyone if I did not write an essay I find I have. I humbly apologize.

—Virginia A. Park, '32.





Manchester Club

<i>President</i>	-	-	-	-	MARION LATHE
<i>Vice-President</i>	-	-	-	-	EDGAR PARIS
<i>Secretary</i>	-	-	-	-	MARY GOTT
<i>Treasurer</i>	-	-	-	-	SARAH MULLEN

Each year the students at K. N. S. look forward with eagerness to the night of the Manchester masquerade, for no one knows what unique pleasure is awaiting them.

The hall, this year, was attractively decorated with green and white banners to represent Manchester High School Central and blue and white to represent Manchester High School West.

This traditional masquerade has prevailed for many years and we sincerely hope that it will continue in the future.

The De La Salle



<i>President</i>	-	-	-	-	WILLIAM SWEENEY
<i>Vice-President</i>	-	-	-	-	GENEVIEVE MCGIRR
<i>Secretary</i>	-	-	-	-	MARTIN HEFFERNAN
<i>Treasurer</i>	-	-	-	-	LILLIAN LAVERY
<i>Faculty Advisor</i>	-	-	-	-	MISS MCGLYNN

This year the De La Salle has been one of the most active clubs in the school. Many freshman members were added to the club and they have shown their intense interest in the projects of the club through their attendance at meetings and their willingness to cooperate at all times.

Together with the Y. W. C. A., the De La Salle tendered a reception to the Freshmen. May this become an annual event!

In order to further the social education of the student body, the De La Salle has sponsored several socials and card parties in Armstrong Hall.

A most interesting one-act play, "Squaring It With the Boss" was presented as part of a Saturday night entertainment by the members of the club.

Due to the splendid interest and assistance of the faculty advisor, Miss Edna McGlynn, the club has had a very worthwhile year. We hope that the future years of the club may be just as successful.

Y. W. C. A.



<i>President</i>	-	-	-	-	-	MARION LATHE
<i>Vice-President</i>	-	-	-	-	-	ROSAMOND P. JERAULD
<i>Secretary</i>	-	-	-	-	-	ALYCE GAGE
<i>Treasurer</i>	-	-	-	-	-	OLIVE AMES
<i>Faculty Advisor</i>	-	-	-	-	-	MISS BLAKE

This has been one of the best and most worthwhile years of the Y. W. C. A. The club has had an unusually good series of meetings which, through the co-operation of several faculty members and students, have been both entertaining and worth while. The members have shown their interest by the favorable attendance at the regular meetings, held the first and third Tuesdays of each month.

In conjunction with the De La Salle, the Y. W. C. A. tendered the Freshman a reception. We hope that this reception may become an annual affair.

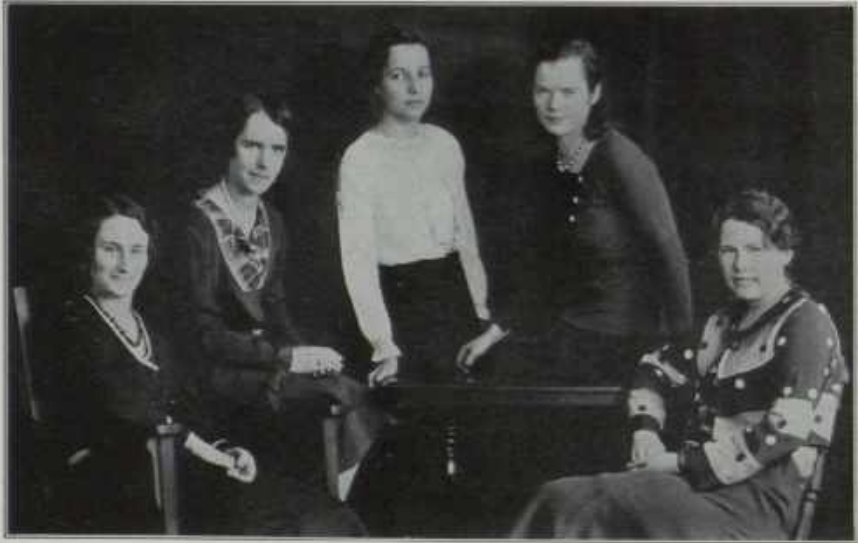
Miss Doris E. Hopkins, N. H. district secretary of the Y. W. C. A. has given several interesting talks to the entire student body under the auspices of the club.

Several socials have been sponsored throughout the year, including a delightful Christmas party and a successful bridge party.

During the year 1930-1931, the club worked in various ways to earn money for a much desired radio. Through the co-operation, kindness, and generosity of the entire school, this desire has been fulfilled, and now a lovely radio has been added to the small club room.

Although this year has been most successful, the club hopes that next year it may be able to add more to the educational and social life of its members and of the whole school.

Women's Debating Squad



Josephine Altenau, Pauline Roby, Genevieve McGirr, Ellen Marshall, Alyce Gage.

Men's Debating Squad



Back row: Thomas McCullough, John Lilliopulus, Valmore Blais, Carl Johnson, Raymond O'Neil.

Front row: Ernest Peltonen, Russell Heath.

Forum

<i>President</i>	- - - - -	REED HARDY
<i>Vice-President</i>	- - - - -	L. RUSSELL HEATH
<i>Secretary</i>	- - - - -	FLORENCE DUNNINGHAM
<i>Faculty Advisor</i>	- - - - -	MISS MCGLYNN

The Forum is the oldest organization in the school and one of the most prominent. The purpose of the club is two fold—to foster debating within the club and to sponsor interscholastic debating. The club has an unusually large membership this year.

The women's team has participated in five debates this year—two with Middlebury; two with Plymouth and one with New York University.

The men's team has had three debates—two with the University of Vermont and one with Middlebury.

A mixed team debated Fitchburg Normal at Keene.

The Freshmen men's team had a debate with the Boston University Freshmen.

The object of a freshman team is to build up material for the varsity squad. The teams have met with very great success this year due to the excellent coaching of Miss McGlynn, faculty advisor.



English Club

<i>President</i>	-	-	-	-	EUGENIA LAMBERT
<i>Vice-President</i>	-	-	-	-	DOROTHY CUNNINGHAM
<i>Secretary</i>	-	-	-	-	RUTH WINSLOW
<i>Treasurer</i>	-	-	-	-	GERALDINE HAYWOOD
<i>Faculty Advisor</i>	-	-	-	-	MR. DRENAN

In the fall of 1931, sixteen girls of the Sigma Pi Epsilon to be, organized the English Club of K. N. S.

Any upper class girl of the three and four year course with a term average of 80 or more, who is recommended by her English professor for participation, appreciation, and endeavor is a candidate for admission.

With an impressive service the first initiation was held in February to welcome to the group Virginia A. Park, Rosamond P. Jerauld, Genevieve A. Jaastad, Doris B. Wilson and Doris M. Kimball.

Ten members of the club acted as ushers at the "Ben Greet" performance.

Mr. and Mrs. Sprague Drenan are sponsors of the club, and all the instructors of the English Department are honorary members.

We greatly appreciate the help of President Mason and all the instructors and friends who have helped and guided us during the year '31-'32.



Sigma Pi Epsilon

Back row: Doris Wilson, Anne Koski, Rosamond Jerauld, Virginia Park, Ellen Marshall, Doris Swanson, Adeline Cygan, Edith Kukkola.

Second row: Doris Kimball, Letizia Duca, Mary Crahan, Dorna Mitchell, Ruth Lennartson, Loretta Bliss, Rosie Stiller.

Front row: Ruth Winslow, Dorothy Cunningham, Mr. Drenan, Eugenia Lambert, Geraldine Haywood.

Keene Club



<i>President</i>	- - - -	WILLIAM PROPERZIO
<i>Vice-President</i>	- - - -	ELIZABETH ALDRICH
<i>Secretary</i>	- - - -	DOROTHY TIBBETTS
<i>Treasurer</i>	- - - -	HAROLD DEWYEA
<i>Faculty Advisor</i>	- - - -	MRS. HUDSON

The activities of the Keene club have been confined this year to two events. The first of these took place October eighth, when the club took charge of the ushering and other necessary arrangements for the Marionette show given by Sue Hastings in the Spaulding Gymnasium.

The second event was the annual entertainment of the Keene High School Seniors. This was held in the gymnasium on Wednesday evening, December thirty.

Following a short program, bowling, pool, swimming and other activities were enjoyed. An orchestra composed of Keene students—here at school—played for the dancing.

Pres. and Mrs. Wallace E. Mason, Mrs. Percy D. Hudson, Mr. and Mrs. Harry W. Davis, Miss Isabelle U. Esten and Miss Mabel R. Brown were patrons and patronesses.

The committee in charge included Messrs. Elizabeth Aldrich, Margaret Stearns, Charlotte Nims and the Messrs. Harold Dewyea, Frank Bennett, Jr., and Lee Goodrum.

Senior Dramatic Club



<i>President</i>	- - - - -	LOUIS RAMSAY
<i>Vice-President</i>	- - - - -	FLORENCE DUNNINGHAM
<i>Secretary</i>	- - - - -	MARY COLBY
<i>Treasurer</i>	- - - - -	NEALE CURTIS
<i>Coach and Faculty Advisor</i>	- - - - -	MISS SHUTE

Student players this year presented, on the evening of February seventeenth, A. A. Milne's comedy, "The Romantic Age," before their fellow students and townspeople. The audience was very appreciative, the actors played excellently together, and the production was a credit to the Senior Dramatic Club. Now the club is looking forward to the Shakesperian play in June.

Meanwhile the club, believing that it should serve the future as well as the present, has alternated its regular meetings with meetings open to the school, in which problems likely to arise in putting on plays in the elementary and junior high schools are discussed—such as how to coach an amateur play, the use of makeup, how to pick a cast, etc. A most enjoyable meeting was held at the school camp in the fall.

A jury from the club assisted Miss Shute in choosing the members of the Junior Dramatic Club, limited this year to twenty. The following were chosen: Misses Campbell, Duval, Felt, Fogg, Gott, Hale, Hugnon, Kathaw, Koskela, McGirr, Palmer and Quintillio; Messrs. Blair, Blanchard, Carter, Goffe, Knox, Johnson, O'Neil and McLean. Though small the club has considerable talent as shown in its one-act plays.

Rural Club



<i>President</i>	- - - - -	DORIS DENT
<i>Vice-President</i>	- - - - -	HARRIET ANDERSON
<i>Secretary</i>	- - - - -	KATHERINE MOHER
<i>Treasurer</i>	- - - - -	JEANETTE DIOTTE
<i>Faculty Advisor</i>	- - - - -	MISS FARNUM

The main objective of the Rural club is greater knowledge and understanding of home and school conditions in rural communities.

For this reason, speakers are selected who bring to the members, their experiences in rural work. These experiences, often amusing prove a source of great help to all.

Among the speakers of this year are Superintendent Carl Cotton of Derry; Mr. William F. Skelton, Mr. Harry B. Preston and Miss Lucy Doane. The rural cadets are also given an opportunity to tell of their work in the rural communities.

Many interesting meetings have been held; a new member's night; a work meeting where pictures and other materials were mounted to be used in the rural schools, and a trip to the school camp.

Work and pleasure are combined in this club and the result is helpful to all.

Academy of Science



<i>President</i>	- - -	ROSAMOND P. JERAULD
<i>Vice-President</i>	- - -	MARTIN HEFFERNAN
<i>Secretary</i>	- - -	GEORGE CHICKERING
<i>Treasurer</i>	- - -	MAURICE KALLOCH
<i>Faculty Advisor</i>	- - -	MR. CARLE

The Academy of Science has truly deserved its reputation—the most active organization on campus. The active membership this year is unusually large. Yet, due to the splendid cooperation between the members, the activities of the club have been numerous and educational.

Early in the fall, the club began to work by visiting the school camp, clearing the underbrush and beautifying the grounds. The "camp" is the special project of the organization, and during the winter months many work meetings are devoted to the making of bird houses and other things which may be used for the camp.

"Mountain Day," held on October twenty-fourth attracted the largest group of *climbers*—freshmen, upper classmen and faculty were known to climb Mt. Monadnock.

Due to the great enthusiasm aroused, another hike over West Hill was planned. This trip also was taken with an unusually large number of students in attendance.

Many interesting trips have been taken by the members of the Sigma Alpha Chi—one to Beryl Mountain in So. Acworth, to the Granite State Studio; one to the Pot Holes and to the School Camp.

We are very grateful to the Academy of Science for its excellent work. It is the type of organization which makes school better for the students and the students better for the school. We wish it the best of success.



OUR WATER CARNIVAL



ONE LIFE SAVER



AT TWILIGHT

OUT-OF-DOORS



AN
ACADEMY OUTING



BERYL MT. GEOLOGISTS



ON
MONADNOCK



HIKERS ALL



POSING
OR
PROPOSING?



OUR GYM TRIO

Nu Beta Upsilon

<i>President</i>	-	-	-	-	MILDRED KNOX
<i>Vice-President</i>	-	-			PHYLLIS WHITEHOUSE
<i>Treasurer</i>	-	-	-	-	JENE MONROE
<i>Secretary</i>	-	-	-	-	DOROTHY MORGAN
<i>Faculty Advisor</i>	-	-	-	-	MISS HENDRY

Under the direction of our worthy president, the Nu Beta Upsilon has had a very successful year.

Among the outstanding social successes were: An informal tea given to the Freshmen Home Economics Girls to help them to get better acquainted with the upper classmen; two weeks later a meeting was held in Parker Hall. An enjoyable social hour was held, followed by dancing with the music furnished by the Girls' Orchestra.

The sorority sponsored three social activities including—a Sunday afternoon's entertainment at the Invalid's home; a Christmas project for a needy family; and the preparation of bandages for the hospital.

The Nu Beta Upsilon joined with the Alpha Pi Tau Fraternity in giving a very enjoyable Tea Dance on the afternoon following the Mid-Year Ball.

Two anticipated events that come sometime in the spring are the Saturday night program and the sorority dance.



Back row: Doris Milligan, Elaine Flint, Miss Hendry, Beatrice Blanchard, Pauline Trow, Priscilla Abbott, Irene Jewett, Emma Cram, Jane Thorpe.

Second row: Florence Child, Miss Macdonald, Marjorie Freetley, Katherine Elliot, Margaret Deeg, Elizabeth Aldrich, Frances Peabody, Rowena Perry.

Front row: Marjorie Gould, Kathleen Goss, Ruth Langley, Dorothy Morgan, Mildred Knox, Jane Monroe, Ruth Ingraham, Thelma Ricker, Marjorie Rhodes.

Alpha Pi Tau Fraternity

<i>President</i>	- - - -	WILLIAM SWEENEY
<i>Vice-President</i>	- - - -	JAMES P. CONNELLY
<i>Secretary</i>	- - - -	PAUL RIZZI
<i>Treasurer</i>	- - - -	EARL HARRIS
<i>Advocate</i>	- - - -	JOHN HOBSON

The Alpha Pi Tau fraternity has completed its ninth year of life at Keene Normal School, founded by four young men with the sole purpose of setting forth the ideals of Keene Normal School through "service, knowledge and fraternalism," it exists today for the fulfillment of the same ideals.

Since the founding of the fraternity our members have been leaders in all the activities of the school.

The seventh volume of the "Alpha" has been successfully published in the interest of the student body of the school. To all those who have made this success possible we extend our gratitude.

In conjunction with the Nu Beta Upsilon sorority, the Alpha Pi Tau fraternity sponsored a very enjoyable Tea Dance on the afternoon following the Mid-year Ball.

We look forward to future years with the greatest hopes. To our new members is left the responsibility of "carrying on".



Back row: Ralph Kelley, Raymond Luxford, Raymond Crosby, Wilfred Poirier.
Second row: Alfred Barney, Robert Bailey, Norman Hartfel, George Chickering, John Whitehead, Henry Mahoney.
Front row: Maurice Kalloch, Earl Harris, Paul Rizzi, William Sweeney, James Connelly, John Hobson, George Knox.

Kappa Fraternity

<i>President</i>	- - - -	EDMOND D. TALBOT
<i>Secretary</i>	- - - -	CHANDLER HURD
<i>Treasurer</i>	- - - -	EARL M. COLBETH

Gamma Chapter has enjoyed another successful year. The fraternity life has been especially harmonious and many of the brothers have been outstanding in student activities.

Ten of our members were present at the National meeting held in Boston on February sixth. Brother Dewyea was the representative of Keene Normal School at the Convention of the Eastern States Association of Professional Schools for Teachers held in New York.

This year fewer new members have been taken in because the fraternity feels that a smaller group can be more successfully instilled with the professional spirit and ideals of the fraternity. One honorary member, Mr. Harry B. Preston of the faculty, was added to our roster.



Kappa Delta Phi

Back row: Walter Miner, John Conrad, Lynn Richards, Louis Ramsay, William Properzio, Philip Dodge, Gilbert Tuson, Andrew Boland, Keith Quimby, Forrest Gray.

Second row: Edward Presby, Laurent Ruell, Robert Ringland, Lloyd Olmstead, Frederic Beechman, Harold Dewyea, William Gamester, Albert Brown, Herbert Hecker, Harold Edgerly.

Front row: George Donovan, John Day, Stanley Adamandares, Philip Brown, Edmond Talbot, Earl Colbeth, Robert Tinkham, Martin Heffernan, Thomas King.



Alpha Pi Tau Pledgees

Back row: Lawrence Smith, Russell Raymond, Raymond Curtice, Everett Snow, Ernest Brown.

Middle row: Howard Wheeler, Edwin Hill, Robert Domina, Carl Johnson, Louis Goffe, James Morrill.

Front row: Ramon Martineau, Neale Curtin, Duncan MacLean, Newell Paire, George Sullivan, Stuart Carter, Robert Prescott.



Flight of the Fledglings

Perhaps you have seen in spring, the robins pushing the fledglings from their nest, the flurry of feathers, the terrified chatter, and the erratic swoops to fearful landings on some leafy bush. You have seen them later when you suddenly became aware of a new beauty in the young robins singing on the lawn.

If the Spirit of Conquest that launched the fledglings into the world had ever faltered in resourcefulness or courage, you would never have heard the song of the robins high above the rasp of the locust.

Fledgling man is today launching himself into a new world of space. Who can say what multitudes will sail along the paths where the courageous pioneers of today first winged their way? Were it not for the ambitious urge in the hearts of brave men, we should never see the conquest of the sky—we should never lift our faces from the still, brown earth.

—Carl Johnson, '34.



Kappa Delta Phi Pledgees

Back row: Omer Dumont, Valmore Blair, Harold Bridge, Everett Drake, Thomas McCullough.

Front row: Edgar Paris, John Lillipulus, Stanley Dydo.



"Thel" Fitzgerald: "What's a synonym?"

"B" Wilcox: "A word you use when you can't spell the other."

Miss Blake (calling the roll): "If you aren't here please raise your hand."

Miss Shaw (after watching the departure of the Sunday afternoon "Ozone" class): "I wonder what the parade is for!"

Alta Perkins: "So your brother is on the football team?"

"Milly" Knox: "Yes, indeed."

Alta Perkins: "Do you know what position he plays?"

"Milly" Knox: "I'm not sure, but I think he is one of the draw-backs."

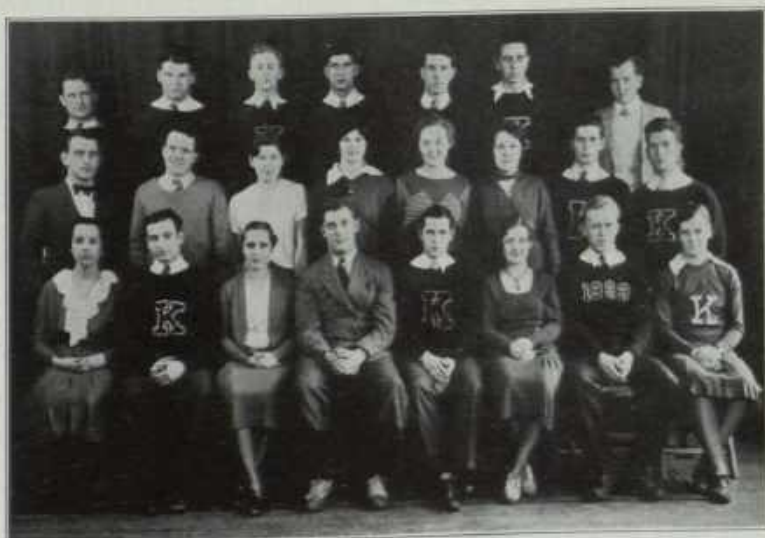
"Ed" Jones (gazing at posted marks): "Well, now I'm as famous as Napoleon."

"Stan" Dydo: "How come?"

"Ed" Jones: "I went down in history day."

ATHLETICS

"K" Club



Back row: Ralph Kelley, Raymond Crosby, Harold Bridge, Raymond Luxford, Maurice Kalloch, Edwin Hill, George Chickering.

Second row: F. Ramon Martineau, Earl Harris, Frances Rawstron, Marion Pike, Madeline Burpee, Mildred Berquist, Philip Dodge, Philip Brown.

Front row: Genevieve McGirr, Chandler Hurd, Helen Spalding, George Knox, Henry Mahoney, Beulah Perkins, Norman Hartfel, Priscilla Abbott.

"K" Club

<i>President</i>	- - - -	HENRY E. MAHONEY
<i>Vice-President</i>	- -	CAROLINE TEWKSBURY
<i>Secretary</i>	- - - -	GEORGE KNOX
<i>Faculty Advisor</i>	-	MISS BOOTH, MR. CALDWELL

Because of the fact that the members of the "K" club are varsity lettermen, the membership in the club is honorary. The ideals of the organization are embodied in the constitution whose objectives are as follows:

1. To foster and aid in the development of school spirit.
2. To stimulate and encourage a spirit of good sportsmanship in school life.
3. To provide an incentive for increased participation in athletics.

The "K" club had charge of Home-Coming day in October. We are greatly indebted to them for the splendid manner in which they handled it this year. Keep the alumni spirit alive!

Girls' Athletics

Miss Booth, with the aid of Miss Smith, student assistant, has had a successful year as instructor of girls' athletics.

An intra-mural program, with the exception of two basketball games with Plymouth, has revolutionized girls' athletics at present and in the future for the school. The enjoyment of almost complete student participation reiterates the fact that "all sports for all" is the true American sports ideal.

All the girls were divided into two teams—the "reds" and the "whites". They were drawn by a committee representing the various groups participating in girls' athletics. There were division and class games, and after the finals, between these groups, a team from the two sides was chosen. Then the deciding game between the "reds" and "whites" was played.

Hockey, the main sport, early in the fall, was the first one to try out this system. It proved to be quite successful. The "reds" defeated the "whites" in a most exciting game by a score of 2-1.

Division and class basket-ball games began soon after the Thanksgiving recess with much enthusiasm. The 2 H. F's. won the elimination tournaments while the class games were played in a round robin tournament. The "Red" and "White" game climaxed the successful program. After a close contest the "Reds" again proved the stronger and came out on top by a score of 37 to 26.

While there were only two games scheduled for the varsity, fourteen girls practiced untiringly for about five weeks. Miss Barbara Smith ably coached them and much is due her for the team's success. This team set a precedent, defeating Plymouth twice in one year. The score at Keene was: Keene 45, Plymouth 30, and at Plymouth, Keene 37, Plymouth 35.

Rifle Club, under Mr. Keach, have shot matches against other schools as in previous years with like success. Many new members were added this year.

Swimming and bowling were the favorite indoor sports that all participated in this year.

Red Hockey Team



Back row: Muriel Nash, Pauline Holcomb.

Second row: Beulah Perkins, Helen Connolly, Genevieve McGirr, Ellen Marshall, Olive Milligan.

Front row: Katherine Josselyn, Mildred Berquist, Dorothy Cunningham, Letizia Duca, Rosie Stiller.

Echo Lake

Ah, lovely mountain lake
Guarded by tall white peaks
That rise so grand, yet beautifully
To form our rivulets and creeks,
Our undulated streams.
Your waters are so placid,
So calm and crystal clear.
Your peace wraps up the tired mind
As each soft lap falls on human ear.
Your surface, reflecting heaven's blue,
Will stay the pass of men.
The path along your grassy side
Leads to Paradise and back again.

—Mildred Holcomb, '33.

Rifle Team



Back row: Rita Clough, Helen Rice, Doris Milligan.
Second row: Bertha Mark, Arlene Littlefield, Nona Haynes, Mary Crahan, Beatrice Blanchard, Ruth Jones, Alice Sterry.
Front row: Mildred Holcomb, Vera Bradbury, Olive Milligan, Geraldine Haywood, Pauline Holcomb.

Beauty

Childhood's fancy of beauty
Was a dimpled face, large bright eyes
And rose dotted lips that smiled
Beneath their crown of golden curls.

Youth donned a new ideal of beauty
An older face; peach velvet skin
Framed in glistening blue black silk
And thus adorned a shapely figure
Full of grace.

As old again as youth, we seek not
Beauty in aesthetics alone, but search
The faces with lines of care
For deeds have tracked
Real character there.

—Viola M. Jaastad, '33.

Red Basketball Team



*Back row: Letizia Duca, Betty White, Elaine Dwyer, Ruth Lennartson.
Front row: Eugenia Lambert, Mildred Berquist, Dorothy Cunningham.*

White Basketball Team



*Back row: Pauline Woodrow, Dorna Mitchell, Eleanor McAllister.
Front row: Ada Perkins, Priscilla Abbott, Louise Tewksbury.*

Archery Club



*Back row: Anne McCarthy, Florence Dane.
Second row: Miss Smith, Ivilla Barrett, Bertha Mark, Lulu Stylianos, Barbara Alexander.
Front row: Helen Rice, Rita Clough, Alexandria Kiratsos.*



Miss McGlynn: "Did you do your outside reading?"

"Ronny" Jerauld: "No, it was too cold outside."

Girls have two ideas about secrets—either they aren't worth keeping or they're too good to keep.

"Marge" Deeg: "So you and 'Bobbie' don't speak. What's the trouble?"

Lois Huntington: "We had a dreadful quarrel about which loved the other most."

Eldora: "Dot," you seem to have oceans of hair."

Dot Soule: "Why?"

Eldora: "Because there are waves in it."

Restaurant version: One man's meat is another man's croquette.

Track Prospects for 1932

Last year, you all recall, was the first year that K. N. S. has ever had a men's track team. You also remember that we had a good one and that it proved to be a great success. Well! this year we are going to have a better team because of the men left from last year's team, and because of the promising Freshmen class.

A few meets with other schools are being arranged and intra-mural track will probably be carried on by all men in school.

The very promising men from last years team includes George Knox, weights; Francis Tate, dashes; Martin Heffernan, mile; Ernest Brown, weights; Herbert Hecker, weights; "Monty" Kalloch, weights and dashes; "Stan" Adamandares, mile; and Howard Wheeler, dashes. From the Freshmen, the promising men are Ray O'Neil and Carroll Fortier.

The track season is bound to be a great success—so let's get out there men and back the team up with everything you have.

—"Monty" Kalloch.

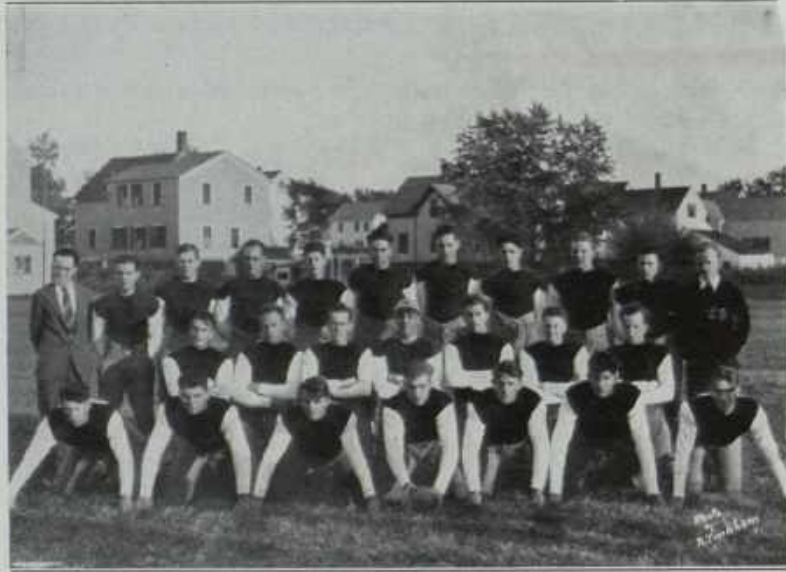


Track Team

Back row: Martin Heffernan, John Wright, George Knox.

Front row: Howard Wheeler, Maurice Kalloch, Stanley Adamandares, Francis Tate.

Football



Keene Normal School's football record has again reflected credit upon the school. Under the captaincy of "Pat" Connelly of Gonic, the team fought through a short but extremely difficult schedule with much success. The new freshman rule barring first year students from varsity competition was keenly felt, however.



Tennis

With varsity tennis in its second year of interscholastic competition, K. N. S. students should view with confidence the arrival of spring. Two members have been lost by graduation, but varsity tennis seems destined to remain one of spring's major activities.

Basketball

Although not as successful as last year's team, those students who were fortunate enough to have witnessed the last game in Spaulding Gym will remember for a long time to come, the varsity hoopsters of 1932. Not one player is to be lost by graduation.



Men's Varsity Basketball Team

Back row: George Knox, Edwin Hill, Raymond Luxford, Herbert Hecker, Ernest Brown.

Middle row: Coach Webb, Alfred Barney, Omer Dumont, Ramon Martineau, Neale Curtin, Manager.

Front row: Robert Giraden, Ernest Peltonen, Clayton Craig, Everett Snow, Laurent Ruell.

Freshman Basketball

K. N. S. Frosh. A short season against high school competition. As many games won as lost. Thus can one summarize the mediocre success of our first year men. Coach Webb will have some fine material for next year's varsity.



Freshman Basketball Team

Back row: Thomas McCullough, George Sullivan, Carroll Fortier, Daniel Winn.

Second row: Neale Curtin, manager; Charles Clement, assistant manager; Clarence Smith, Coach Webb, John Conrad, assistant coach.

Front row: Duncan MacLean, Clarence Ginn, Newell Paire, Stuart Carter, Russell Raymond.

JOKES

3 H. J.

"Girr"-gr. and "Joe's" little poodle, "Peg," came in to eat her supper of "Brett" and butter. She would pay no attention to "Wilson," the butler, but only to "Elsie," the maid, who was very kind to her. She would not even deign to notice "Gene" or "Carlton" who were talking and enjoying their "Good-rum" in the next room.

"Peg" was always on the "Dot" when it was time for supper and cared about nothing else. When she had finished her evening repast, she usually dashed in to see her beloved mistress "Marion". "Peg," whose Christian name was "Margaret," loved to fiddle around and play with "Marion" in the evening before "Marion" went for a walk across the "Lee" with "Stearns," the chauffeur. She usually met him at "Kimball" Station which was a short way from her home. Sometimes "Peg" went with them, but not often, for "two is company and three a crowd," you know!

Love me, love my dog!

Grammar

Gil: "If I said I am handsome, what tense would that be?"

Tree: "Pretense—pretense."

In Chemistry

Mr. Keech: "Who made the first nitride?"

"Monty" Kalloch: "Paul Revere."

No Unemployment

Mr. Davis: "What is an operetta?"

Bright Freshman: "One who works for the Telephone Company."

Scotch

They tell of a Scotchman who went to a restaurant and ate six plates of asparagus. He didn't even leave a tip.

Last Words of Great Men and Women of 1932

"Thel" Fitzgerald: "Don't be facetious."
"Ronny" Jerauld: "Know any good jokes for the Kronicle?"
"Tilly" Wolcott: "Merrily, merrily shall I live now."
Louis Ramsay: "It can't be done; let's do it."
"Ben" Johnson: "Oh, for goodness sake."
Bertha Bickford: "Have a saltine, you're too fresh."
Irma De Camp: "Be careful of my radio man!"
"Skip" Avery: "Figure it out for yourself."
"B" Wilcox: "Tread softly and you'll tread far."
"Al" Mullen: "What's on your mind?"
Charlotte Davison: "Yes, I like to fiddle around."
"Rae" Paige: "Under the shade of the old apple tree."
"Hack" Mahoney: "Hey, listen, will yuh?"
Ruth Jones: "Everything a man eats goes to his stomach."
Louise Eastman: "No, I don't know where my room-mate is."
Helen Brown: "Oh yeah! You're wise, aren't you?"
"Jackie" Dinsmoor: "I wonder who won the game at N. H. U."
Charlotte Eaton: "I love cherries."
"Fran" Hallisey: "Yes, I'm going home this week-end."
Anne Oulton: "My heart for a French translation."
"Dot" Soule: "Oh deah!"
Ruth Langley: "Oh room-mate!"
Anna McCarthy: "Abyssinia."
Marion Pike: "Wait a minute!!!"
"Chan" Hurd: "I still live."
"Andy" Boland: "Oh—for a cup of coffee!"
"Ed" Jones: "Oh well, I should worry."
"Flo" Dunningham: "Now let me tell you."
"Al" Gage: "I'm just thrilled to tears."
Caroline Tewksbury: "I'm scared to death of that exam."
"Mike" Bridge: "Give me pep or give me death."
"Gen" Jaastad: "As I was saying—"
"Peg" Dubois: "I don't want to interrupt but—"
"Dub" Wright: "Ye gods, I'm passing!"
"Jinny" Park: "How exhausting!"

Whose?

"Tom" King: "Say, 'Chan,' if you had five bucks in your pocket, what would you think?"

"Chan" Hurd: "I'd think I had somebody else's pants on."

Chance For Teachers

Marion Nichols: "Doesn't your little brother swear terribly?"

Helen Brown: "Yes. He has a good vocabulary; but absolutely no expression."

O-O-O-O

Marion Pike: "I got zero in history today."

Ruth Jones: "That's nothing."

Marion Pike: "What's nothing?"

Ruth Jones: "Zero."

Christmas Cantata



Rose Night





LITERARY

A Church Episode

How well I remember that beautiful Sunday morning in October. I arose earlier than usual determined that today I would accomplish something. If I had only known what I was to accomplish perhaps I would have been less anxious to flaunt my energy.

My dutiful Aunt interrupted me in the midst of my tasks to inquire whether or not I would like to go to church with her. She knew I disliked going to her church but since she was so fond of me and so wealthy, I decided to humor her. My Aunt was a very conventional old spinster. I sometimes wondered whether she ever did anything except from a sense of duty and for the appearance of the thing. I worked a little longer before I started to dress. Aunt Ella always allowed plenty of time, as I was pleasantly reminded on our way to church. I had kept her waiting three minutes while I hunted for a quarter to put in my purse along with a beloved lucky piece which I always kept there. We arrived at church in ample time for my Aunt to make her dignified entrance into our family pew, which was unfortunately very near the front. She went down the aisle with me following in her wake.

The first part of the sermon was long and tedious. As was his custom, the congregation being large enough to warrant his tactful efforts, our minister ceased at the climax of his sermon as an opportune moment for the collection. Each deacon grasped an implement and thrust it before the startled Christians in front of us. As our deacon approached the pew, I had not a single misgiving, and confidently reached into my purse, extracted my contribution, and held it until I had passed the plate to my expectant Aunt. As I dropped my coin, I had a terrible suspicion which I confirmed by a hasty glance into my purse. I had dropped my lucky piece into the plate. Impulsively I jumped up and grasped the deacon's arm causing the poor man to drop the collection plate and nearly collapse himself. It was too late now to retreat, I must brave the horrified stares of the congregation. I began to pick up the most prominent coins and having restored the plate to the deacon, with great presence of mind, I told him I would recover the rest after the service. The rest of the service was unintelligible to me. The only thing which pierced my consciousness was the sight of the object of my embarrassment reposing not two inches from my Aunt's heel. How hateful it looked to me, now! The "lucky" piece had made a fool of me and rendered me incapable of enjoying my Aunt's favor and consequently her fortune. She would never forgive me for subjecting her to such embarrassment. Thus I learned that superstition is a millstone around the neck of the ignorant.

—Nona Haynes, '34.

The Spectator at K. N. S.

There was great excitement on campus today when a curious looking old fellow was seen strolling about. Your whisperings were quite correct, it was the honorable Sir Roger. While visiting the points of interest in New Hampshire, he put in his appearance at Keene. Being literarily inclined he joined me on a visit to our Mason Library. It might be of considerable interest to you both from a literary curiosity and pure interest to note the remarks of the worthy gentleman.

He was much pleased that our school was interested in developing all sides of our person, as proved by such a collection of books; Scientific, Education or Professional, Historical, Literary, Sociological, Philosophical, et cetera. But best of all—that we had not neglected the books for leisure.

As Sir Roger stood before our shelves of fiction, I heard him mumble to himself short quotations about some of our books, which I suppose he considered, by his expression of pure joy, were worthy of a place there.

"Here," says he, "*Les Miserables*," a novel after Hugo's own heart. His Jean Valjean lives the very sad experiences of the unhappy close of Hugo's life. At the same time he drives home "the goodness of the individual and cruelty of organized society."

"Forsyte Saga, it is Galsworthy's twelve o'clock you know," he beams upon me, "a perfect shining treasure of contemporary fiction". "Shows very typically the endless changing world; how disappointing to the older generation—but progression to the new generation. Galsworthy, however, is very sociological though very pessimistic."

"Dear old Dickens, poor old worn out fellow almost as bad as the pages of his now famous books. You know that man was almost as queer as I. At one moment he was very humorous, at the next he was cruel to the point of horror. You have '*Oliver Twist*' and '*Tales of Two Cities*,' why haven't you '*Old Curiosity Shop*' or '*Pickwick Papers*'."

"Here you parade before me, Thackeray, Quo Vadis, Hawthorne, Joan of Arc, George Eliott, all old friends of old persons like I."

"I suppose you and these others," making a jesture at the supposedly studying students, (Sir Roger was so fascinating), "are rather more interested in that H. G. Wells person. Here you have '*Undying Fire*', which, using the old time worn idea of God in an educational situation, knits together the author's two outstanding ideas—religion and education."

"Also are you interested in that horrible, yet fascinating picture of war, where the author beats out in vivid straight forward language the dire consequences of war to its survivors—escaped in flesh, but destroyed in spirit—'*All Quiet on the Western Front*'?"

"Ah, yes! and here's that beautiful philosophical yet rather less deep, Myrtle Reed's '*Master Violin*'. If you want a picture of life and how its school makes men, you have but to read this story. If you wish to see the soul of an artist, it is here."

"And this is a picture of an intense zeal for life; a keen appreciation of everything masculine, a vigorous and tender heart for both animals and men who really live." London's "*Call of the Wild*—"

As Sir Roger moved on he murmured, "you can well be proud of a collection, with small choice such as that."

Did you know we have these books?

—Doris M. Kimball, '33.

Advertisements and the Reader

If advertisements are the chief source of income for the papers and magazines, the people who own these papers and magazines must be millionaires. I am through buying magazines to be continually annoyed by ads! I object to reading the first four paragraphs of a story and then being informed that it will be continued on page 103. I am interested in the story, however, and hastily turn to page 103 to keep the sense of the sentence for stories are invariably continued in the middle of the most inspiring sentences. My attention is distracted by page 104 which bears the glaring truth that "four out of five have it" and with this awful thought staring me out of countenance I try again to focus my attention on the story. The following paragraph awakens my imagination and I find myself traversing the hilly paths of Italy when my eye catches a glimpse of a Roman centurian in the next column who is shouting,—"Voice—you now can have the voice you want!" I am brought rudely down to the commonplace by this and I think savagely to myself, "I am satisfied with my voice for I neither stammer nor stutter and I ask myself irritably, why I have to know about this new silent method of voice culture.

Having finished my story I aimlessly turn the page and come face to face with this startling question written in boldfaced type, "Do you (emphasis and underscoring of the you) know the love-story of Paphnutius the Monk and Thois the Courtesan of Alexandria?" I shamefacedly admit I do not and, fascinated, I am compelled to read on. I find that this story is the subject of the conversation of the intellectuals and that every well-balanced and well-read person knows the story. I read that my inferiority will be hidden with no extra charge if I act promptly and buy this set of books. Furthermore, the publishers will condescend to allow me to keep the books in my home free of charge for ten days provided I pay the required sum promptly on the tenth day.

Feeling decidedly subnormal I turn the next page and my senses swim before this ocean of color. I read the headline—"To writers who aren't writing." Morosely I think I may not be a writer but at least it is evident that I am not writing at present and, if I follow the dictates of my friends' consciences, I never will. Shaking off a feeling of foreboding I read that "you never heard of an ex 'writer' (no—they have probably died from an inferiority complex). The next question is a vital one,—"Have you perchance written a little or a lot and paused—dissatisfied with your style?" I begin to think this pertains to me but the next question shakes this idea. "Are you one of those unnumbered thousands whose friends say, 'If you could only write stories as you do letters you would be a successful author'." I never write letters so my friends have never been able to remark on the brilliance of these epistles.

I find my future depends on myself and what I do with this helpful altruistic advertisement. I can be cured of my lack of technique and style by two essentials, practice and attitude. I see this is another way in which I may apply my teacher training by developing an attitude toward something in myself.

I find that this correspondence course is a pleasant one indeed, being "free of 'isms' and 'alogies'." I am enheartened when I see that it is a system of writing instruction prepared and taught by active New York reporters and editors and that it has turned out "some of this country's leading writers." My imagination breaks loose again and, in fancy, I see my name in print in the New York Times magazine under the title of the book which everyone pronounces a masterpiece. It is very easy for I just have to mail my assignments to

(Continued on Next Page)

the office every week to have them *individually* (this word was underlined in the paragraph) corrected and criticised. Under this sympathetic guidance I will escape the bane of all young writers, that of copying someone else's tricks of writing and I will rapidly develop my own distinctive and self-flavored style. That self-flavored distresses me somewhat since it reminds me of the old nursery tale in which the sausage flavored the soup with itself by jumping into the hot water and other ingredients.

My natural abilities are to be tested by the writing aptitude test. Now this test is singularly easy—one merely glances at the wonderfully colored picture at the top of this page and writes a story about it. The picture shows an extremely beautiful young lady in the harsh grasp of a policeman. Her wardrobe trunk is lying opened on the floor of the deck—I forgot to state that this takes place on shipboard—and another officer is kneeling by the trunk with a string of pearls in his hand. He is glancing accusingly at the poor girl. The terrified blue eyes of the maiden convinced me to write a story extricating her from this situation and showing plainly that the officer kneeling by the trunk is the thief. I stare into space for five minutes as all good authors do to collect the threads of the story, leaving the magazine unheeded on my knees. After the allotted time glancing down on the magazine I find the pages have turned over and there in large black headlines the inevitable question, "Do you know the love story of Paphnutius the Monk and Thois the Courtesan of Alexandria?"

My inferiority is brought home to me and I realize that handicapped as I am by knowing nothing at all about this question, the chief subject of the conversation of the intellectual circles, I can never hope to be an author.

—Thelma R. Fitzgerald, '32.

To Raphael, the Divine Painter

In thy eager hand
Did Inspiration enfold her celestial art.
And faithful to the artist's wand
Thou'st unveiled the the inner man.

From the promptings of a joyous heart
There flowed with infinite grace
Angels winged with holy love;
Cherubs, with the rapture of heaven lifted face,
Awaiting the revelation from Above;
Sweet Madonna, gentle, mild,
From all earthly taint immune,
Humbly clasping the Adored Child,
Peaceful with her God to commune.

Doris B. Wilson, '32.

Like a Star

Like a star
You appeared in my sky
Like a star
Cool—aloof—a little shy
Like a star
Always drawing nearer
Came you to me
Warm—friendly—ever dearer.

And now like a star
Flashing thru' space
In endless flight
Thru' the black of night
I see the last vestige of color
In that glorious silver splash
Against the blue.
And meditating—I realize
The star is gone—like you—

Eugenia Lambert, '33.

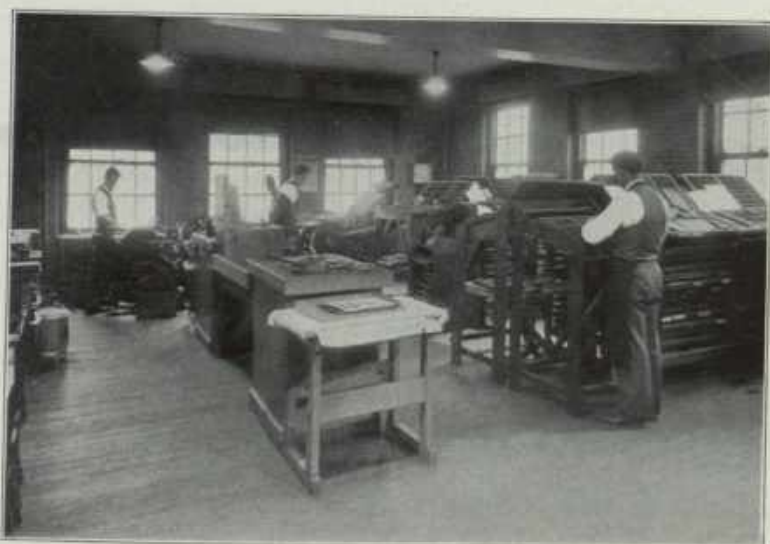
"Dining Room Gang"



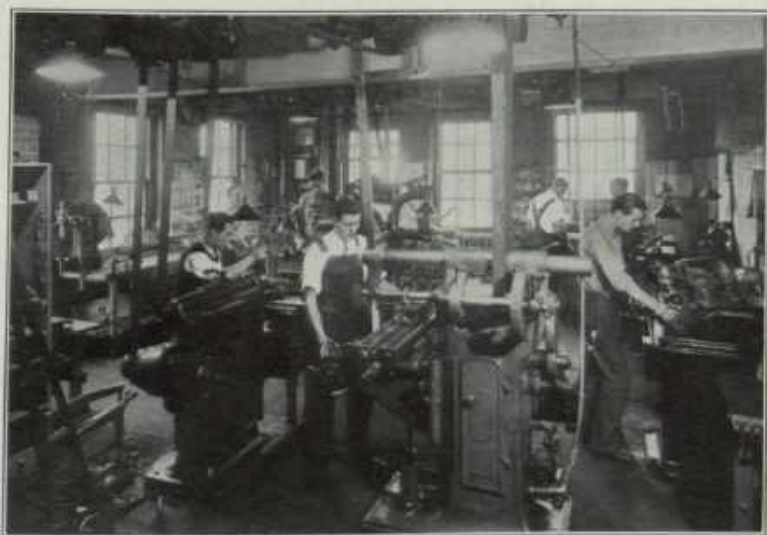
School Camp



Print Shop



Machine Shop



Editorial Board

Faculty adviser, Harry B. Preston.
Consulting editor, Roy A. Sullivan.
Editor-in-chief, Rosamond P. Jerauld, '32, Manchester.
Associate editor, Marion Lathe, '33, Manchester.
News editors, Edna L. Johnson, '32, Hillsboro; Genevieve C. McGirr, '33, Concord.
Business and Circulation manager, W. Chandler Hurd, '32, Pittsfield.
Assistants, Lewis D. Bailey, '32, West Lebanon.
Boys' sports editors, John S. Hobson, '32, Concord; Henry Mahoney, '32, Newport; John H. Day, '33, Antrim.
Girls' sports editors, Frances B. Peabody, '32, Berlin; Charlotte S. Nims, '32, Keene;
Rosie G. Stiller, '33, Franklin.
School exchanges, Margaret E. Stearns, '33, Keene.
N. H. school and educational notes, Doris B. Wilson, '33, Concord.
Mechanic arts editor, Earl M. Colbeth, '33, Portsmouth.
Music editor, Blanche Bailey, '32, Sunapee.
Art editor, Pauline L. Roby, '32, Franklin.
Home economics editors, Marjorie Gould, '32, Athol, Mass.; Doris G. Warner, '32, Keene.
Fraternity editors, Edward L. Presby, '33, Lisbon, Kappa; William Sweeney, '33, Nashua, Alpha.
Alumni editors, Thelma R. Fitzgerald, '32, Methuen, Mass.; Doris M. Kimball, '33, Beverly, Mass.
Year Book Assistants, Virginia A. Park, '32, Pittsfield; G. Edwin Jones, '32, Manchester; Charlotte Davison, '32, Woodsville; Rachael Paige, '32, South Hampton; Flora Dinsmoor, '32, Laconia; Ruth Jones, '32, Manchester; Helen Spalding, '32, Plainfield; Alice Upton, '34, Hancock; and Gertrude M. Cossar, '33, North Sudbury, Mass.



OUR THANKS

THE 1932 Kronicle Board wishes to express its appreciation to the many friends of Keene Normal School whose loyal support has made possible this year book.

We urge you to support the advertisers. We give especial thanks to Harold W. Dewyea and Frederick W. Beechman for their work in securing the advertisements.

SPECIAL ACKNOWLEDGEMENT

The year book committees are especially grateful to the Granite State Studio, Cheshire Engraving Company and the Sentinel Printing Company for their many helpful suggestions and their excellent work in making the 1932 book a distinctive success.

YOUR BANK

Think of this as *your bank*. Come in and tell us how we can help you.

We know that our success is dependent upon the prosperity of our customers—upon you. We are here to serve, to boost, and to grow with the city.

Make use of our facilities and service. We sincerely offer you our earnest cooperation.

THE KEENE NATIONAL BANK

National Savings Department



THE ASHUELOT-CITIZENS NATIONAL BANK OF KEENE, N. H.

—
A Good Bank to Use for
Checking Accounts

—
SAFE DEPOSIT BOXES
For Rent at Reasonable Rates

—
CAPITAL SURPLUS
\$300,000.00 \$360,000.00

The BON TON CAFE and LUNCH

*The Place of Quality, Service
and Satisfaction*

—
A Visit Will Convince You

—
BOORAS & MELEONES, PROPS.
KEENE, N. H.

KEENE'S
LEADING DEPARTMENT
STORE

Goodnow's



*Always the newest fashions
Lowest Prices
Finest Quality*

YOU WILL ALWAYS FIND
A COMPLETE ASSORT-
MENT OF—



*School Supplies
Dennison's Goods
Lending Library
Loose Leaf Note Books
Sporting Goods
Greeting Cards
K. N. S. Stationery*

CHASE'S BOOK STORE

18 West Street

Tel. 1300

"Prosperity is the fruit of labor. Teach
economy, that is one of the first and
highest virtues. It begins with saving
money."

Abraham Lincoln

—:—

KEENE SAVINGS BANK
(A Mutual Savings Bank)

To the Teachers and Pupils of the Keene Normal School

We like to have you think of this bank as something more than a place to deposit money.

A spirit of cooperation always prevails here and we know that you will like to do business with us.

We will be glad to see you often and help you.



Cheshire National Bank

CAPITAL AND SURPLUS, \$550,000.00

The Mill Store

The only retail store for Faulkner & Colony—manufacturers of fine woolens, based on highest quality standards.

Flannels, Chinchillas, Fleeced surfaced Fabrics, Crepes, and Novelty Weaves.

Samples sent on request. Mail orders filled.



Faulkner & Colony Mfg. Co.

219 WEST STREET

KEENE, N. H.

Mill Store Open Daily, including Saturday, 8:00 A. M.-5:30 P. M.



A simple way to insure a smart appearance—a looking glass and a suit of Michaels-Stern clothes.

An inspection of the smart, new fabrics tailored into easy Spring models is instantly convincing.

\$25 Is the Price

NOLIN'S

49 Main Street

Keene

PEARSON BROS.

SPORTING GOODS

FANCY HARDWARE

GIFTS

Bloomer & Haselton, Inc.

*FURNITURE — RADIOS
CEDAR CHESTS, DESKS AND
LAMPS*

Free Delivery to Anywhere in
New England

Keene, N. H.

Tel. 1170

ROBINSON-BRETT
LUMBER CO.

Distributors
SAFEKOTE SHINGLES

Call 229
For an Estimate

Ellis Bros & Co.
CITY FLORISTS

Office 25 West Street
Greenhouses, 203 Winchester St.
Keene, N. H.

*Seasonable Cut Flowers and
Floral Decorations
a Specialty*

Nearest The Normal School

SHOE REPAIRING
SHOE SHINE PARLOR

SHOE REPAIR SHOP
140 Main St. Keene, N. H.

KEENE NORMAL JEWELRY
AND FRATERNITY JEWELRY

Sheaffer's Fountain Pens, Pencils
and Desk Sets
Sheaffer's "Script" Ink

*We also do all kinds of Watch and Jewelry
Repairing*

CALL 75 FOR THE CORRECT TIME
W. A. SAWYER, JEWELER
27 Main Street

Compliments of

MARCOU'S

Candy and Ice Cream

here's to the girls of

Keene Normal School

Good luck to you!

TO those of you who are leaving
Keene we wish success and happiness; to those who will return we extend a cordial invitation to make yourselves at home in our store. Come singly or come in droves, we don't care how much noise you make. Regardless of what you want: ten dollar perfume or two cent stamp, prescription filled, check cashed, a glass of "super-soda" or just plain parking space, we're here to serve you and glad to see you.

The Bullard & Shedd *Co.*
REXALL DRUG STORE

MILLER-BROS.-NEWTON

MEN'S CLOTHIERS

and

FURNISHERS

35 Main Street
KEENE, N. H.

Compliments of

T. M. PENDEXTER
DENTIST

3 Central Sq. Bank Block

The Royal

WOMEN'S APPAREL - FURRIERS -

FASION FUR SHOP

5 MAIN STREET

KEENE, N. H.

Party Dresses and Graduation Dresses

Finest Shop for

Women's Apparel

FUR REPAIRING

FUR STORAGE

Call 1122

The Only Fur Shop in Keene

Shoes—Educator—Shoes
Men's, Women's and Children's

—
Give your Feet a Treat
at

G. R. KINNEY'S
20 Main Street Keene, N. H.

—
Shoes for the Entire Family
Men's - - \$1.49 to \$3.98
Women's - - \$1.69 to \$3.98

Hosiery - - 69c to 98c

Compliments of

**MASON INSURANCE
COMPANY**

KEENE, N. H.

TOILET GOODS
Of Quality

Face Powders—Lotions
Creams—Talcums
Perfumes—Toilet Waters

—DUBARRY—

FARR'S PHARMACY
The New Corner Drug Store
Telephone 60

SPORTING GOODS

FOR THE HOLIDAY



UNION HARDWARE CO.'S
SKATES

DRAPER & MAYNARD'S
ATHLETIC GOODS

Free Catalog
for the Asking



Spencer Hardware Co.

LENDING LIBRARY

*Latest in Fiction
and Greeting Cards
For Every Occasion*

THE SALLY BOOK
STORE

9 LAMSON STREET

THE LADIES DRY GOODS
EXCHANGE

HOSIERY
UNDERWEAR

DRY GOODS NOTIONS

PALMER'S

6 Central Square Keene, N. H.

GAS AND ELECTRIC
SERVICE

AND
APPLIANCES



PUBLIC SERVICE CO.
OF
NEW HAMPSHIRE



Here Is the
News

You Will Find
at
This Good
Store

The Most Up-to-Date Line of
Students' Clothing, Furnishings and
Sport Wear in Keene

GENE'S MEN'S SHOP

W. E. WRIGHT
Optometrist

21 Main St.

Keene

Over Douglas Shoe Store

LATCHIS THEATRES

Keene, Claremont, Brattleboro and Colonial, Keene

"The Houses of Distinctive Attractions"

Presenting the Latest High Class Entertainments in
Large, Wholesome, Comfortable Theatres

THREE PERFORMANCES DAILY

Matinee 2:30

Evening 7 and 9

DUBOIS BARBER SHOP

Women's Hair Bobbing 35c

WE SERVE YOU

21 West Street

Keene

FRANK W. PERRY *Optometrist*

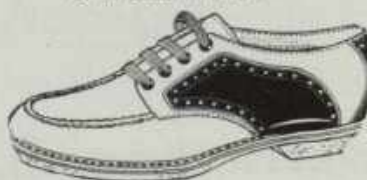
*Specialist in the Examination of Eyes
for Glasses*

Over Public Service Co.
Keene, N. H.

Try DUFFY'S

32-34 Church Street

POPULAR
PRICED



Sport
Shoes
for
Men
and
Women

BOSTON SHOE SHINE PARLOR

ANTONIO DOSTILIO

Oldest and Best Shoe Shine Parlor in Keene
First Class Shoe Repairing Done by
Goodyear Machinery

ALL WORK GUARANTEED
13 Roxbury Street



STICK TO YOUR OLD TIRES

After wearing a pair of shoes for a few months they seem to fit so snugly and comfortably you hate to discard them when they begin to show signs of wear. Don't give them up. Bring them to us and we will make them look as good as new and they will be just as comfortable as they ever were. We do all kinds of shoe repairing for men, women and children.

MODERN SHOE REPAIRING
10 West St. Keene, N. H.

RELIABLE FOOTWEAR

WALK OVERS
HEEL HUGGERS
FRIENDLY FIVES

GROWER'S

The Cotton Goods Store

Home of	Van Raalte
Dainty Dot	Gloves
Silk Hose	In Fine
	Fabrics

Berkeley Textile Co.

STREETER AND HEALD

10 VERNON STREET

KEENE, N. H.

The Big Independent

Satisfaction Guaranteed

When You Think of

BETTER DRY CLEANING

Think of

KEENE DRY CLEANING CO.

\$1.00 Cleaning, Pressing \$1.00

Tel. 1814-W 48 Main St., Keene, N. H.
Over Fishman's Store

*We Will Photograph Anything
Anytime, Anywhere*

KODAK PICTURES

The Kind You've Always Wanted
24 HOUR SERVICE

THE CUTLER STUDIO

9 Central Square

Keene, N. H.

Compliments of

MEDVIDOFSKY'S

ROXBURY STREET

GRANITE STATE STUDIO

19 WEST ST.

DEVELOPING AND PRINTING

Eastman Kodaks, Brownies & Films

"Buy Them Here—Leave Them Here"

"We Cut to Suit"

EDDIE'S BARBER SHOP

Ladies' Hair Dressing a Specialty

We are up to date

Telephone 808

D. E. O'Neil, Prop.

EAGLE HOTEL
Restaurant and Lunch

REAL FOOD AT SENSIBLE PRICES
110-112 Main Street Keene, N. H.

Compliments

of

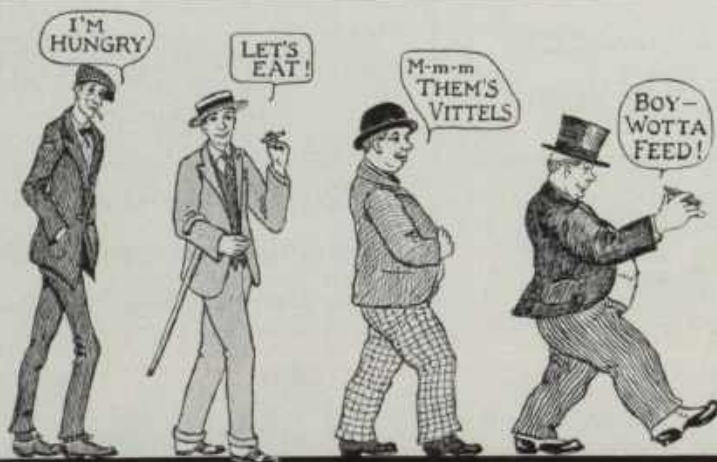
CRYSTAL CAFE

With the Approach of
COMMENCEMENT

*May we take this
opportunity to
thank the members of
K. N. S.—'32
for their generous patronage
And to hope that the years ahead
May Be Filled With
HEALTH—WEALTH
AND HAPPINESS*



G. H. TILDEN & CO.
Booksellers and Stationers



25
YEARS
PAST
SERVICE

—:—
Recommend
Us To
Your
Grand-
children

“EAT AT”
JOHNNIE'S DINER
WHERE YOU CAN EAT MORE FOR LESS

JOHN A. JUDGE, Proprietor



A u t o g r a p h s

