

Kronicle
1936

Kronicle

1936



DEDICATION

WE are happy to have this opportunity to express our appreciation to Miss Edna M. McGlynn, for her constant and sincere efforts in our behalf, by dedicating this volume of our yearbook to her. Those of us who have studied under Miss McGlynn's guidance know her as an excellent teacher. The many who have worked with her professionally and socially realize more fully how deeply she felt toward Keene Normal and its students. The entire student body responds to this thought with a feeling of appreciation, and once again extends its wishes for Miss McGlynn's continued success.



Wallace E. Mason, Ed.D.

PRESIDENT

STATE BOARD OF EDUCATION

GOV. H. STYLES BRIDGES	Ex-officio
ORTON B. BROWN	Chairman
JOHN C. BROOKS	
MRS. MARGARET S. GOODNOW	
MRS. ALICE S. HARRIMAN	
ROBERT T. KINGSBURY	
JAMES A. WELLMAN	

COMMISSIONER OF EDUCATION

JAMES N. PRINGLE

DEPUTY COMMISSIONER

WALTER M. MAY

AGENTS OF THE BOARD

RUSSELL H. LEAVITT	High School
PHILA M. GRIFFIN	Elementary
PAUL E. FARNUM	Administrative



Faculty

Henry D. Carle
DEAN OF MEN

Isabelle U. Esten
DEAN OF WOMEN



Isabelle U. Esten



Top, left to right

Mabel R. Brown, A. B.
Secretary, Customs and Manners

Martha E. Randall
English

Ida E. Fernald
Assistant Dean

Inez M. Vaughan
Supervisor of Practice School

Bottom, left to right

Isabel M. Blake, A. M.
History

Frank H. Blackington, Jr., A. B.
French

Marion Frost Hudson
Public Speaking, Reading Methods

Conrad A. Adams, Ed. M.
Trades and Industries





Top, left to right

Henry D. Carle, Ed. M.
Science

Harry W. Davis, A. B.
Music

Idella K. Farnum, A. M.
Elementary Education

Frederick J. Simmons, A. M.
Sociology. Philosophy

Bottom, left to right

Vryling W. Buffum, A. B.
Librarian

M. Marie Thyng, A. M.
Biology, Bacteriology

Sprague W. Drenan, A. M.
English

Charles W. Cutts, A. M.
Economics, Sociology





Top, left to right

Marion M. MacDonald, A. M.
Home Economics

Clarence H. DeMar, Ed. M.
Printing, Industrial History

Spencer E. Eaton, B. S.
Manual Training

Harry B. Preston, A. B.
Literature, Social Science

Bottom, left to right

Melvin J. West
Bursar, Penmanship

William A. Caldwell, A. M.
Physical Education

Merton T. Goodrich, M. A.
Mathematics

Elizabeth E. Gregory, A. M.
Geography





Top, left to right

James A. Keech, M. A.
Chemistry, Physics

Ethel J. Ramsden, A. M.
Nature Study, Science

Maynard T. Waltz, A. M.
Latin, Psychology

Alice M. Stone, A. B.
Assistant Librarian

Bottom, left to right

William F. Skelton, A. M.
Supervisor of High Schools

Marjorie Bateman, M. A.
Physical Education

Leonard S. Morrison, B. S.
Secondary Education

Lucy E. Clark, R. N.
School Nurse





Top, left to right

Dr. Ruth C. Warwick
School Physician

Laverne Bushnell, B. M. E.
Trades and Industries

Mary D. Deans, A. M.
History

Edith H. MacArthur, Ph. D.
Home Economics

Bottom, left to right

Augusta Pragst, A. M.
Elementary Education

Dorothy Wilens, A. B.
Art

Edwin S. Huse, A. B.
Principal, Central Junior High
School

Bertha C. Manchester, B. S.
Headmaster, Hancock High School





CENTRAL JUNIOR HIGH FACULTY

First row: Miss Marjorie Beach, Mrs. Della R. Davis, Miss Harriet J. Leslie, Miss Amy Tenny, Miss Bernice J. White.

Second row: Roy L. Terrill, Frank H. Blackington, Jr., Principal Edwin S. Huse, Lawrence B. Merrill.

WHEELLOCK SCHOOL FACULTY

First row: Miss Anne Kuhn, Miss Mabel M. Fisher, Mrs. Bertha S. Davis,

Second row: Mrs. Enid Gover, Miss Gertrude Merriam, Mrs. Eleanor Nelson, Miss Bertha Twining (Principal).





STUDENT ASSISTANT TEACHERS

Left to right: Music, Dorothy McLemore; Art, Miriam Hodges; Physical Education, Jean Paddon.

SPECIAL ELEMENTARY COURSE

Dorothy L. Britton	Keene, N. H.
Marjorie H. Carver	Troy, N. H.
Ruth Mary Doe	Northwood, N. H.
Lee E. Goodrum	Westmoreland, N. H.
Winifred T. Hammond	Manchester, N. H.
Rachel Kendrick	Weare, N. H.
Mary Peabody	Berlin, N. H.
Mary Lula Morey	Keene, N. H.
Russell E. Raymond	Keene, N. H.
Rose E. Zysk	Keene, N. H.

ONE-YEAR COURSE FOR COLLEGE GRADUATES

Gerald A. Atkins	N. H. U.	Haverhill, N. H.
Paul C. McNamara	N. Y. U.	Charlestown, N. H.
George D. Newman	N. H. U.	Keene, N. H.
Lucille H. Sterling	N. H. U.	Portsmouth, N. H.

Seniors



HIGH SCHOOL COURSE

L. Fred Barry, Charlestown

"When the fight begins within himself, a man's worth something."

Kappa Delta Phi (1) (2) (3) (4), President (2), Secretary (3), Treasurer (4); Dramatic Club (1) (2) (3) (4), President (3), "Adam and Eva", "When the Whirlwind Blows", "Spooks", "Captain Applejack", "Solitaire", "Macbeth"; Forum (1) (2), Treasurer (2); Class President (3) (4); Intramural Basketball (1) (2) (3) (4); Kappa Koinon (1) (2) (3) (4); Mid-year Ball Committee (3) (4).



J. Laurence Bucher, Alton

"Larry"

"His very foot has music in it
As he comes up the stairs."

Forum (1); Kappa Delta Phi (1) (2) (3) (4), Secretary (1); Social Committee (2); Kappa Representative Student Council (4); Accompanist to Boy's Glee Club (1); Accompanist to Chapel Choir (4); Accompanist to May Festival (3).



Andrew Crooker, Jr., Hillsboro

"Andy"

"I am in earnest. I will not equivocate; I will not excuse; I will not retreat a single inch; and I will be heard!"

Kappa Delta Phi (1) (2) (3) (4); Forum (1) (2) (3) (4), President (2); Freshmen Debating, Varsity Debating (2) (3) (4), Manager (2) (3) (4); Dramatic Club (3) (4), "Pierrot Will Not Grow Old" (3) (4); International Relations Club (2); Orchestra (1) (2); Student Council (4); Kronicle Board (3) (4), Fraternity Editor (3), Associate Editor (4); Intramural Basketball Champions (2) (3); Senior Life-Saver (3) (4); Dean's List (1) (2) (3).



Mary Leona Dearborn, Groveton

"Teddy"

"The joy of youth and health her eyes displayed,
And ease of heart her every look conveyed."

Dance Orchestra (1) (2) (3) (4); School Orchestra (1) (2) (3) (4); Sigma Pi Epsilon (2); International Relations Club (2); League of Nations 1.



Jeannette E. Diotte, Newport

"Not too serious, not too gay
But altogether a jolly good girl."

De La Salle (1) (2) (3) (4), Treasurer (2); Forum (2) (3) (4), Varsity Debating (2); Sigma Pi Epsilon (3) (4); International Relations Club (2) (3) (4); Rural Club (1) (2), Treasurer (1); French Club (3) (4); Division Hockey (1); Division Basketball (1) (3); Rostra (2) (3) (4); Academy of Science (2); Dramatic Club (3) (4); Dean's List (1) (2) (3).



Newell J. Paire, Keene

"Born for success he seems,
With shining gifts that take all eyes."

Football Captain (1); Basketball Captain (1), Varsity Basketball (1) (2) (3); Intramural (1); Speedball (1) (2) (3) (4); Red Cross Life Saving (1) (2), Examiner (3) (4); Alpha Pi Tau Fraternity (1) (2) (3) (4); Director of Junior High School Sports Day (3); Business Manager of Kronicle Board (3); Keene Club (1) (2) (3) (4); President (2) (3); "K" Club (2) (3) (4); Dramatic Club (4).

Helen Mary Pratt, Keene

"Sis"

"The true, strong and sound mind is the mind that can embrace equally great things and small."

Sigma Pi Epsilon (1) (2) (3) (4); President (4); Dramatic Club (1) (2) (3) (4); "She Stoops to Conquer", "Adam and Eva", "Macbeth", "Captain Applejack", "The Diabolical Circle", "Rose Stands By", "Spooks", "Pierrot Will Not Grow Old"; International Relations Club (1) (2) (3) (4); Secretary (4); Model League (3) (4); Rostra (1) (2) (3) (4); Kronicle Board (2) (3) (4); Keene Club (1) (2) (3) (4); Secretary (2); W. A. A. Club (1) (2) (3) (4); Life Saver (2) (3) (4); Stunt Club (1) (2) (3); Class Hockey (1) (2); Bowling Tournament (2) (3); Swimming Color Team (3); Badminton Tournament (2) (3); Pageant (1) (2); May Festival Chorus (1) (2) (3); Class Secretary (4).



Clarence Owen Richardson, Harrisville

"Dick"

"The heart to conceive, the understanding to direct, or the hand to execute."

Kappa Delta Phi (1) (2) (3) (4); Secretary (4); Treasurer (3); Chapel Choir (2) (3) (4); Glee Club (1) (2); School Orchestra (1) (2); May Festival (2) (3) (4); Academy of Science (1) (2); Art Club (3).



Miriam Louise Roby, Sanbornton

"Zealous, yet modest; innocent, though free;
Patient of toil, serene amidst alarms;
Inflexible in faith, invincible in arms."

Kappa Psi Omicron (1) (2) (3) (4); Freshman Debating Team (1); Varsity Debating (2) (3); Sigma Pi Epsilon (3) (4); International Relations Club (2) (3) (4); Librarian (2); Program Committee (3); Rostra (1) (2) (3) (4); Glee Club (1) (2) (3); Chapel Choir (1) (2) (3) (4); Orchestra (1) (2) (3) (4); May Festival (2) (3); Dramatic Club (3); Pageant (1) (3); Dean's List (1) (2) (3).



Barbara Severance, Hillsboro

"Barb"

"Few things are impossible to diligence and skill."

Orchestra (1) (2) (3); Sigma Pi Epsilon (1) (2) (3) (4); Dramatic Club (1) (2) (3) (4); "When The Whirlwind Blows", "Spooks", "Adam and Eva", "Macbeth", "Captain Applejack", "Rose Stands By", "The Dear Departed", "Solitaire"; Orphans Club (1); V. W. C. A. (1) (2) (3) (4); Social Committee (2) (3) (4); W. A. A. (2) (3) (4); French Club (3); President (3); Kronicle Board (2) (4); International Relations Club (3) (4); Student Council (4); Dean's List (2) (3); Color Bowling (2); Color Badminton (2); Class Basketball (3) (4).



Paul K. Stimson, Milford

"Stim"

"A sunny disposition is the very soul of success."

Alpha Pi Tau (1) (2) (3) (4); Secretary (2); Vice-President (4); Class Treasurer (3); Dramatic Club (2) (3) (4); Basketball (1) (2) (3); Tennis (1) (2) (3) (4); Captain (4); Kronicle Board (2) (3) (4); Social Committee (2) (3) (4); International Relations Club (2) (3) (4); Treasurer (4); Class Marshal (1); "K" Club (1) (2) (3) (4); President (3); Forum (1); Dramatic Club (1) (2) (3) (4); "Adam and Eva", "Captain Applejack", "Little Shot".



HOME ECONOMICS COURSE

Theresa Burke, Fair Haven, Vt.

"Sleep is better than medicine."

W. A. A. (2) (3) (4); De La Salle (3); Le Petit Salon (3); Nu Beta Upsilon (1) (2) (3) (4); Glee Club (2) (3); Division Basketball (1) (3); Pageant (1) (3); Freshman Prize Speaking (1).





Edythe K. Johnston, Barre, Vt.

"Eddie", "Johnny"

"I care for nobody, no not I.
If no one cares for me."

Class Vice-President (3) (4); Forum (1); Varsity Debating (1); Y. W. C. A. (1); W. A. A. (1) (2) (3) (4); Dramatic Club (2) (3) (4); Glee Club (2) (3); Kronicle Board (3); Tea Dance Chairman (2); Freshman Prize Speaking Committee; Nu Beta Upsilon (1) (2) (3) (4); Pageant (1) (3); Le Petit Salon (3); Color Archery (2); "K" Club (1) (2) (3) (4); Dean's List (2); Division Basketball (2).



Helen F. Schellenberg, Manchester

"Shelly"

"Do not squander time, for that is the stuff life is made of."

Chapel Choir (3) (4); Nu Beta Upsilon (3) (4); Manchester Club (3); May Festival (3) (4); Orpheus Club (3); Art Club (3); Dean's List (3); Lanell Jr. College (1) (2).



Jennie A. Simonds, North Bennington, Vt.

"Jinny"

"Friendship is the highest degree of perfection in society."

Nu Beta Upsilon (1) (2) (3) (4); Secretary (2); Executive Board (3) (4); Orpheus Club (1) (2); Y. W. C. A. (1) (2); Dramatic Club (3) (4).



Katharine Mary Snyder, Woodstock, Vt.

"Kay"

"Ambition has no rest."

Y. W. C. A. (1); Nu Beta Upsilon (1) (2) (3) (4); Kronicle Board (2) (3); Le Petit Salon (3).



Irene Szalajeska, Laconia

"Sally"

"The rule of my life is to make business a pleasure, and pleasure a business."

De La Salle (1) (2) (3); Tap Dancing (1) (2); Division Basketball (1); Fieldball Color Team (2); Nu Beta Upsilon (1) (2) (3) (4); Color Bowling (2); Pageant (3); Color (3); Varsity Hockey (3); Academy of Science (2) (3); Division Volleyball (1); W. A. A. (1) (2) (3).



Eleanor F. Tarbox, Brattleboro, Vt.

"What is worth doing at all is worth doing well."

Nu Beta Upsilon (1) (2) (3) (4); President (3); Y. W. C. A. (1) (2) (3); W. A. A. (1) (2) (3) (4); Dramatic Club (3) (4); Basketball (1); Color Basketball (2); Dean's List (1) (2) (3); "Captain Applejack"; Pageant (3).

TRADES AND INDUSTRIES COURSE

Joseph R. Baines, Manchester

"Joe"

"Example teaches better than percept. It is the best modeler of the character of men and women! To set a lofty example is the richest bequest a man can leave behind him."

Alpha Pi Tau (1) (2) (3) (4), President (3); Tennis (2) (3) (4); Track (3) (4), Coach (3) (4); Treasurer of Class (4).



Paul R. Corrette, Lebanon

"Red"

"Individuality is everywhere to be spared and respected as the root of every good."

Kappa Delta Phi (1) (2) (3) (4); Band (4); Orchestra (2) (3) (4); Dance Orchestra (2) (3) (4); De La Salle (1) (2) (3).



Francis Robert Linscott, Exeter

"Frank"

"Men of courage, men of sense and men of letters are frequent, but a true gentleman is what one seldom sees."

Kappa Delta Phi (1) (2) (3) (4), Marshal (2), President (4); De La Salle (1) (2) (3) (4); Life Saving (1) (2) (3) (4); Intramural Basketball (1) (2) (3) (4); Intramural Speedball (1) (2) (3) (4).



Waldo Russell Streeter, Keene

"Stub"

"Fame is what you have taken
Character is what you give
When to truth you waken
Then you begin to live."

Alpha Pi Tau (1) (2) (3) (4); Keene Club (1) (2) (3) (4); "K" Club (3) (4); Intramural Speedball (1) (2) (3) (4); Intramural Volleyball (1) (2); Track (1) (2) (3), Varsity (3); Kronicle Board (3) (4); Dean's List (3).



Daniel J. Sullivan, Portsmouth

"Danny"

"Great minds react on the society which has made them what they are; but they only pay with interest what they have received."

Kappa Delta Phi (1) (2) (3) (4), President Pro-Tem (4), President (3); De La Salle Club (1) (2) (3) (4), President (3) (4); Academy of Science (1); Class Baseball (1); Class Speedball (1) (2) (3); Class Basketball (1) (2) (3) (4); Dean's List (1) (3).



Gilbert H. Wyman, Keene

"Gil"

"To be perfectly just is an attribute of the Divine Nature; to be so to the utmost of our abilities, is the glory of man."

Alpha Pi Tau (1) (2) (3) (4); Varsity Basketball (1) (2) (3); Baseball (1) (2); Class Speedball (1) (2) (3); Keene Club (1) (2) (3) (4); "K" Club (2) (3) (4).



JUNIOR HIGH SCHOOL COURSE



Richard Ellsworth Beard, Keene

"Dickie", "Beardie"

"The future opens wide and fair
Within this young man's eye."

Alpha Pi Tau (1) (2) (3); Keene Club (1) (2) (3); Treasurer (3);
Class Basketball (1) (2); Varsity Basketball (1) (2) (3); Speed-
ball (1) (2) (3).



Kermit E. Bennett, Lancaster

"Bennie"

"There is no need of words; believe facts."

Academy of Science (1) (2) (3); Men's Glee Club (1); Scout Mas-
tership Course (2); St. Francis Friendly Indian Leader (3); May
Festival (1).



Marion Cecelia Bergeron, Keene

"Nothing endures like fine personalities."

Keene Club (1) (2) (3); Forum (1) (2) (3); Vice President (3); De La
Salle Club (1) (2) (3); Dean's List (2); W. A. A. (1) (2) (3);
French Club (2); Division Basketball (1) (2) (3); Tennis Tourna-
ment (1) (2) (3).



Jenness Holbrook Carlton, East Swanzey

"A sense of duty pursues us ever."

Orchestra (1) (2); Keene Club (1) (2) (3); Class, Color Volleyball
(2); W. A. A. (2) (3).



Betsey Helen Crowell, Kensington

"Nothing is impossible to a willing heart."

Y. W. C. A. (1) (2) (3); W. A. A. (1) (2) (3); W. A. A. Board
(3); Christmas Play (2); Division, Class, Color Hockey (1) (2);
Division, Class Volleyball (1) (2); Division, Class Basketball (1) (2);
Varsity Basketball (2); Color Track (1) (2); Color Swimming (2)
(3); Class, Division Baseball (1) (2).



Georgia Day, Manchester

"Geo"

"As I went up to Lebanon."

Division, Class, Color, Varsity Hockey (1) (2) (3); Division, Class,
Color Baseball (1) (2) (3); Division, Class, Color, Varsity Basketball
(1) (2) (3); Class Color Tennis (2); W. A. A. (1) (2) (3); W. A. A.
Board (2); "K" Club (1) (2) (3); Pageant (2); Kronicle Board
(3); Manchester Club (1) (2) (3); Eastern States Association of Pro-
fessional Schools for Teachers (2).

Thelma O. Dickinson, Winchester

"I have a rendezvous with Death."

Le Petit Salon, Vice-President (2); W. A. A. (1) (2) (3); Orpheus Club (1) (2) (3); Intramural Basketball (1) (2); Hockey (1) (2); Class Bowling (1) (2).



Gertrude M. Duval, East Jaffrey

"For you and I are past our dancing days."

De La Salle Club (2) (3); International Relations (3).



Gertrude D. Emerson, Concord

"Trudy"

"A merry heart doeth more good than all the world's medicine."

W. A. A. (1) (2) (3); Y. W. C. A. (1) (2) (3); Spring Festival (1) (2).



Barbara M. Erwin, Keene

"Barbie"

"Howdy! Barb!"

Keene Club (1) (2) (3); French Club (2); Dean's List (2).



Frances Deering Giles, Littleton

"Fran"

"To be or not to be, that is the question."

Division Hockey (1); Conn. College, Spanish Club, Golf Club, Christmas Chorus (1).



Ellen A. Hartshorn, Manchester

"El"

"The things we know are rich and rare,—
We wonder how they got there."

Kronicle Board (3); Sigma Pi Epsilon (2) (3), Treasurer (3); Rostra (1) (2) (3), Treasurer (1), President (2); W. A. A. (2) (3), W. A. A. Board (3); Division Hockey (1) (2) (3); Class Hockey (3); Division Basketball (2); Y. W. C. A. (1) (2) (3); Academy of Science (1) (2) (3); Manchester Club (1) (2) (3); Dramatic Club (2); May Festival (2); Dean's List (2); N. Y. Convention (2) (3).





Elson S. Herrick, Gorham

"Curly"

"The world is calling. I must go."

Alpha Pi Tau (1) (2) (3); Advisory Board; "K" Club (1) (2) (3); Varsity Baseball (1) (2) (3); Intramural Sports (1) (2) (3); Men's Glee Club (1) (2); Jazz Orchestra (1) (2) (3).



Rita J. Leonard, Haverhill

"Ritie"

"To set the cause above renown.
To love the game above the prize."

W. A. A. (1) (2) (3); W. A. A. Board (2) (3); Vice-President (2); Varsity Basketball (1) (2) (3); Varsity Basketball Captain (3); Division, Class, Color, Basketball (1) (2); Class Volleyball (2); Glee Club (1); May Festival (2).



Walter Lucien, Hudson

"Waxie"

"All men weave their own destiny.
Spinning the thread of their own fate."

De La Salle (1) (2) (3); Alpha Pi Tau (1) (2) (3); Academy of Science (1) (2) (3); Senior Life Saving (1) (2) (3); Forum (1) (2) (3); Intramural Sports (1) (2) (3); Dramatic Club (1) (2) (3); Boy Scout Work (1) (2).



Edwina Claire Luneau, Concord

"I have a heart with room for every joy."

De La Salle Club (1) (2) (3); Dramatic Club (2) (3); W. A. A. (1) (2) (3); Varsity Hockey (2) (3); Varsity Basketball (2); Pageant (2); Class Volleyball (2); Class Basketball (1) (2) (3).



Theodore E. Marston, Warren

"Ted"

"A little nonsense now and then.
Is relished by the wisest men."

Glee Club (1) (2); Music Festival (1); International Relations Club (3); Kappa Delta Phi (3).



Lewis Laurence Montrone, Keene

"Mac"

"Be Strong! We are not here to play, to dream, to drift!"

Alpha Pi Tau (1) (2) (3); Forum (1) (2) (3); De La Salle (1) (2) (3); Keene Club (1) (2) (3); "K" Club (2) (3); International Relations Club (2) (3); Dance Orchestra (1) (2) (3); School Orchestra (1) (2) (3); Orchestra-Music Festival (2); Band (3); Cross Country (2); Track (2); Intramural Basketball (1) (2) (3); Intramural Tennis (1) (2) (3); Speedball (1) (2) (3); Red Cross Life Saving (1) (2) (3); Dramatic Club (1) (2) (3); Freshman Debating Team (1); Varsity Debating (2) (3); Cheer Leader (1); "Captain Applejack", "Little Shot"; Kronicle Board (2).

Thelma Paige, Hampton

"Paigie", "Thel"

"I must go down to the sea again."

"K" Club (1); W. A. A. (1) (2) (3); Head of Bowling (1); Division, Class Hockey (1) (2) (3), Captain (1); Color (1) (2) (3), Varsity Hockey (1); Division, Class Volleyball (1); Class (1) (2), Color (1) (2) (3), Bowling; Class (1) (2), Color (1) (2), Varsity (1) (2), Baseball.



Evelyn Pedersen, Claremont

"Ev", "Pete"

"We that live to please,
Must please to live."

W. A. A. (1) (2) (3), Secretary (2); Y. W. C. A. (1) (2) (3), Vice-President (3); Glee Club (1) (2); Orpheus (1) (2); May Festival (1) (2); Varsity Hockey (1) (2) (3), Head of Hockey (3); Class Basketball (1) (2); Class Baseball (1) (2); Volleyball (1).



Velma D. Peirce, Peterborough

"Val"

"It's the song you sing and the smile you wear,
That makes the sun shine everywhere."

W. A. A. (1) (2) (3); Kronicle Board (2) (3); Athletic Editor (2); News Editor (3); Class (1) (2) (3), Varsity Basketball; Class (1) (2) (3), Color (2) (3), Hockey (2) (3); Tennis (1) (2) (3); Badminton Tournament (1) (2) (3), Champion (3); Class Baseball (1) (2); Class Volleyball (1); Senior Life-Saving (2) (3); May Festival (1); Dean's List (1) (2) (3); Pageant (2); Y. W. C. A. (1) (2) (3); Dramatic Club (1) (2) (3).



Barbara Ethel Purmort, Newport

"Barb"

"Gentle of speech, beneficent of mind."

Sigma Pi Epsilon (1) (2) (3); Rostra (1) (2) (3); Secretary (2); W. A. A. (2) (3); Dean's List (1) (2); Orpheus Club (1) (2); Music Festival (2).



Elinor Ruth Rix, Keene

"Ruthie"

"And wheresoe'er thou move, good luck shall fling her
old shoes after."

Keene Club (1) (2) (3), Secretary (3); Forum (1) (2); Academy of Science (1) (2) (3); W. A. A. (1) (2) (3); Division (1) (2) (3), Varsity (2), Color (1), (2), Basketball; Tennis Tournament (1) (2) (3); Dean's List (1) (2); Fall Sport's Day (1).



Iona Sheehe, Lebanon

"Iown"

"If we do well here, we shall do well there."

Sigma Pi Epsilon (2) (3); W. A. A. (1) (2) (3); Hockey Class (1) (2) (3), Division (1) (2) (3), Color (2); Y. W. C. A. (1) (2) (3); Glee Club (1); Class Baseball (3) (2); Dramatic Club (1) (2) (3).





Clifton W. Smith, Salem

"Cliff"

"Happy, happy, happy pair,
None but the brave deserve the fair."

Kappa Delta Phi (2) (3); Class Speedball (1) (2) (3); Class Basketball (1); International Relations Club (2) (3); Soccer (2); Boy Scout Training Course (2); Dean's List (2); Forum (1); Pageant (2).



Harold W. Smith, Groveton

"Smitty"

"One man with a dream shall go forth and conquer a crown."

Alpha Pi Tau (1) (2) (3); Academy of Science (1) (2) (3); International Relations (1) (2) (3); Varsity Basketball (1); Intramural Sports (1) (2) (3); Boy Scout Work (1) (2).



Janette T. Snow, Keene

"Jane"

"Now heaven send your good fortune,
A kind heart hath ye!"

Keene Club (1) (2) (3); Dramatic Club (2) (3); May Festival (1).



Barbara F. Stone, Keene

"Barb"

"Behold a girl with an object in view!"

Keene Club (2) (3).



Nina B. Usko, Newport

"Millie"

"It is good to be friendly."

Le Petit Salon (1) (2) (3); Academy of Science (1) (2) (3).



Kathryn Walsh, Manchester

"K"

"Always the same and respected."

Orpheus Club (1); W. A. A. (2) (3); Latin Club (1) (2) (3); Manchester Club (1) (2) (3); Sigma Pi Epsilon (3); Archery (1) (2); May Festival (1) (2).

Mae Youngquist, Manchester

"Mazie"

"Life is a jest and all things show it;
I thought once, but now I know it."

Dramatic Club (1) (2) (3); "Spooks"; Sigma Pi Epsilon (2) (3); Rostra (1) (2) (3); V. W. C. A. (1) (2) (3); President (2); Manchester Club (1) (2) (3); Vice-President (2) (3); W. A. A. (1) (2) (3); Pageant (2); Color Captain (2); Division Baseball (1) (2); Division Hockey (2); Eastern States Association of Professional Schools for Teachers (2); Dean's List (1) (2).

Robert M. Zieff, Keene

"Bob"

"We know the young gentleman, he hath good gifts."

Keene Club (1) (2) (3); Forum (1) (2) (3); Secretary (2); International Relations (1) (2) (3); Vice-President (2); Academy of Science (1) (2) (3); Varsity Basketball (1); Class Basketball (1) (2) (3); Varsity Baseball (1) (2) (3); Class Speedball (1) (2) (3); French Club (2); Class Volleyball (1); Dean's List (1) (2); Freshman Debating (1); Varsity Debating (2) (3); Varsity Tennis (2); Tennis Tournament (1) (2) (3); Bowling League (1); Men's Stunt Club (2); Men's Glee Club (2); Ping-Pong Tournament (1) (2); Champion (1) (2).

ART AND MUSIC SUPERVISORY COURSE

Irene Brosius, Berlin

"Always ready."

Orpheus Club (1) (2) (3); Chapel Choir (3); Class Basketball (1) (2); May Festival (1) (2) (3).

Ruth Emily Clement, Derry

"Ruthie"

"High is our calling, Friend!—
Any Art demands the service of a mind and heart."

Glee Club (1) (2) (3); Chapel Choir (1) (2) (3); May Festival (1) (2) (3); Orpheus Club (1) (2) (3); Chairman of Program Committee (3); Archery Champion (2); Division Basketball (1) (2); W. A. A. (2) (3); Art Club (3).

Mabelle E Felch, Seabrook

"Felchie"

"There is sweet music here that softer falls than petals
from blown roses on the grass."

Orpheus Club (1) (2) (3); Vice-President (2); Glee Club (1) (2); Chapel Choir (1) (2) (3); V. W. C. A. (1) (2) (3); May Festival (1) (2) (3); W. A. A. (1) (2) (3); Board (2); Archery Champion (1); Art Club (1) (2) (3); Vice-President (3); Dramatic Club (2) (3); "Captain Applejack" (2).

Virginia Hough, Lebanon

"Ginee"

"There is music in the air;
Music all around us.
The world is full of it.
And you simply take
As much as you require."

Chapel Choir (1) (2) (3); Women's Glee Club (1) (2) (3); President (2); Orchestra (1) (3); Jazz Orchestra (1) (2) (3); Orpheus Club (1) (2) (3); President (3); May Festival (1) (2) (3); Undergraduate Conductor of Rose Night (2); Color Team (1); Hockey (1) (2); Division (1); Varsity Basketball (2) (3); W. A. A. (1) (2) (3); Academy of Science (1) (2) (3); Art Club (2); V. W. C. A. (1); Class Vice-President.





Frances Sweeney, Littleton

"Fran"

"Everything succeeds with people of sweet and cheerful dispositions."

Orpheus Club (1) (2) (3); Glee Club (1) (2); Chapel Choir (3); May Festival (2) (3).



Sarah Mendum Wyman, Athens, Vt.

"So there was meaning to her words."

Orpheus Club (1) (2), Secretary (2); Chapel Choir (3); May Festival (1) (2) (3); Glee Club (2); Y. W. C. A. (2); Art Club (3); Dramatic Club (2), "A Dish of China Tea"; Archery Tournament (2); Division Basketball (2).



Leora Gardner, Lancaster

"Lee"

"I ain't got any regrets Archie for I gave my life to my art."

Art Club (1) (2) (3), Secretary (2), President (3); Forum (2) (3), Assistant Manager Women's Debate (3); Nature Club (1); Y. W. C. A. (1); Chronicle Board, Art Editor (3); Student Council (3); International Relations (3).



Florina Marie Potvin, Claremont

"Flo"

"Style in its highest beauty is brevity adorned."

Art Club (2) (3); French Club (2), Secretary; International Relations Club (2) (3); Forum (2); Tennis Tournament (1) (2) (3); Dean's List (1) (2); De La Salle (1) (2) (3).

ELEMENTARY SCHOOL COURSE



Myriel R. Angwin, Concord

"Shammy"

"The thing that goes the farthest,
Towards making life worthwhile,
That costs the least and does the most,
Is just a pleasant smile."

W. A. A. (1), Varsity Basketball (1).



David Armstrong, Grafton Center

"Dave"

"Not only is there an art in knowing a thing, but also a certain art in teaching it."

Alpha Pi Tau (1) (2) (3), Chaplain (3); Rural Club (1) (2) (3); Forum (1) (2); Glee Club (1); May Festival (1); Intramural Basketball (1) (2) (3); Intramural Speedball (1) (2) (3); Acrobatics (1); Dramatic Club (2) (3); Varsity Track (2) (3); "K" Club (2); Dean's List (1); Chapel Monitor (2).

Bernice Bookstrom, Concord

"Bunny"

"The hand that made you fair has made you good."

Rural Club (3).



Winifred F. Champagne, Keene

"Winnie"

"She has two eyes so soft and brown—Take care!"

De La Salle (1) (2) (3); Keene Club (1) (2) (3); Rural Club (2) (3).



June Clark, Franconia

"Never idle a moment, but thrifty and thoughtful of others."

Orpheus Club (1) (2); Nature Club (1) (2); Y. W. C. A. (2); Glee Club (2) (3); W. A. A. (1) (2) (3); May Festival (1) (2) (3); Hockey Varsity (2); Basketball (1); Volleyball (2); Pageant (2); Scholarship Day (1) (2).



Vanetta Hamilton Clawson, Spofford

"Van"

"Poetry, therefore, we will call musical thought."

Division Basketball (1) (2); Division Hockey (2); Forum (1) (2) (3); Varsity Debating (2); Third Prize Poetry Contest (2); Life Saving (1).



Ferne Coffin, Gorham

"Coffin", "Casket"

"The work of the world must be done."

W. A. A. (1) (2) (3) (4); Vice-President (2); Academy of Science (1) (2) (3) (4); Forum (2); Art Club (4); Secretary (4); Basketball class team; Tennis Tournament (1) (2) (3); Bowling-Red Team (2); Badminton (1) (2); Dramatic Club (3) (4); Rural Club (4); Swimming (1) (2); Mid-year Decorations (2) (3) (4).



Dorothy Helen Conway, Fitzwilliam

"Dot"

"The birch, most shy and ladylike of trees."

Keene Club (1) (2) (3); Orpheus Club (2) (3); Rural Club (2) (3); May Festival Chorus (2) (3).





Isabel Cook, West Stewartstown

"Cookie"

"Along the cool sequestered vale of life,
She kept the noiseless tenour of her way."

Nature Club (1) (2); President (2); Academy of Science (3); Rural Club (1) (2); Orpheus Club (1); Glee Club (2) (3); May Festival (1) (2) (3); Cantata (2) (3).



Claudia Agnes Croteau, Marlboro

"Blessed influence of one true, loving, human soul on others."

Dramatic Club (1) (2) (3); Orchestra (1) (2); Glee Club (1) (2) (3); Secretary (2); May Festival (1) (2) (3); Basketball, Division and Class (1) (2); Tennis Tournament (2); Orpheus Club (1); W. A. A. (2) (3); "Spooks", "Captain Applejack", "Diabolical Circle", "Solitaire".



Ethel Mae Croteau, Sunapee

"Good sense is one of life's greatest blessings."

Orpheus Club (1); Glee Club (1); Y. W. C. A. (2) (3); W. A. A. (2) (3); May Festival (1); Scholarship Day (2); Pageant (2); Cantata (2).



Anne V. Crowley, Manchester

"Life is an incurable disease."

De La Salle Club (1) (2) (3); Secretary (2); Manchester Club (1) (2) (3); Dramatic Club (2) (3); W. A. A. (1) (2) (3); Varsity Hockey (2) (3); Water Carnival Committee (2) (3); Red Cross Life Saver (1) (2) (3); Class Basketball (1) (2); Class Volleyball (1) (2).



Edith Cushing, Fitzwilliam

"A good heart is better than all the heads in the world."

Rural Club (3).



Mildred Cutter, East Jaffrey

"Millie"

"I never with important air
In conversation overbear."

Division Basketball (1); Division Hockey Team (1).

Alice Desmond, Lebanon

"Al"

"HENCE, Bashful cunning!
And prompt me, plain and holy innocence!"

De La Salle (1) (2) (3); Nature Club (1) (2); Treasurer (2); Academy of Science (3); Rural Club (2); Pageant (2); W. A. A. (1) (2) (3); Division Hockey (1); Badminton Tournament (1); Division Basketball (1); Division Baseball (1).



Eva Y. Dostilio, Keene

"Dosty"

"Few things are impossible to diligence and skill."

Class Vice-President (2); Varsity, Class, Division, Color Hockey (1) (2); Varsity Basketball (2); Class, Division Basketball (1) (2); Rural Club (2) (3); Keene Club (1) (2) (3); Forum (1) (2) (3); De La Salle Club (1) (2) (3); W. A. A. (1) (2) (3); Class Baseball (1) (2); Tennis Tournament (2) (3); "K" Club (2) (3); Dean's List (2); Pageant (2).



Jean Elizabeth Dudley, West Swanzey

"Dud"

"She sat like patience on a monument, laughing at grief."

Keene Club (1) (2) (3); Orpheus Club (1) (2) (3); May Festival (1) (2) (3); Division Hockey (2).



Constance Ruth Dunlap, Concord

"Connie"

"Always the same—quiet and kind."

Dramatic Club (3).



Laura E. Eaves, Peterborough

"In skating over thin ice, our safety is our speed."

W. A. A. (1) (2) (3); Division Hockey (1) (2) (3); Class Hockey (1) (2); Color, Varsity Hockey (2); Division Basketball (1) (2); Forum (1); "K" Club (2); International Relations Club (1) (2) (3); Orpheus Club (1) (2) (3).



Joy Lillian Emery, Keene

"The sense of humor has other things to do besides make itself conspicuous in the art of laughter."

Orpheus Club (1) (2) (3).





Ethel Lelia Fish, Keene

"To the person who himself strives earnestly, God also lends a helping hand."

De La Salle (1) (2) (3); Keene Club (1) (2) (3); Orpheus Club (1); Nature Club (1); Rural (2) (3); Pageant (2); May Festival (1) (2) (3); Division Hockey (1) (2).



Alice Emily Fiske, Dublin

"Thou living ray of intellectual fire."

Nature Club (1) (2); Academy of Science (3); Orpheus Club (1) (2); Y. W. C. A. (1) (2); W. A. A. (2) (3); Rural Club (2) (3); Color Archery (2); Division Bowling (2); Division Basketball (1) (2).



Cecilia Agnes Flaherty, Gorham

"Cel", "Cecil"

"The heights of great men reached and kept,
Were not attained by sudden flight,
But they, while their companion's slept,
Were toiling upward in the night."

De La Salle Club (1) (2) (3); Treasurer (2); Nature Club (1) (2); Secretary (2); Academy of Science (3); W. A. A. (2) (3); Pageant (1); Division Hockey (1); Division Basketball (2).



Eileen Flanagan, Portsmouth

"Arney"

"Whose powers shed round,
Here in the common strife,
Or mild concerns of ordinary life,
A constant influence, a peculiar grace."

De La Salle (1); Tap Dancing (1); Portsmouth Training School (1) (2).



Janet Fletcher, Claremont

"Jan"

"Speak gently! 'Tis a little thing,
Dropp'd in the heart's deep well,
The good, the joy, that it may bring eternity shall tell."

Varsity Hockey (1) (2) (3); Varsity Basketball (2); Class Basketball (1); Life Saving (1) (2) (3); Nature Club (1) (2) (3); "K" Club (1) (2) (3); May Festival (2); W. A. A. (1) (2) (3).



Frances Grindstaff, Keene

"Fran"

"A fair exterior is a silent recommendation."

Keene Club (1) (2) (3); Forum (1) (2) (3); W. A. A. (1) (2) (3); Rural Club (2) (3); Class Hockey (2); Dramatic Club (2) (3); Color Team Baseball (2); Dean's List (2).

Susan Hagland, New Boston

"Sue"

"You may wear your virtues as a crown.
As you walk through life serenely.
And grace your simple rustic gown.
With a beauty more than queenly."

Rural Club (1) (2) (3); Glee Club (2) (3); Orpheus Club (1) (2) (3); Cantata (2); May Festival (2); Scholarship Day (1) (2).



Jeannette Gracia Huneau, Concord

"Jean"

"Slow and Steady wins the race."

De La Salle (1); Glee Club (1); Rural Club (1); Concord Training School (1) (2).



Ruth Alberta Hussey, Greenland

"Pug"

"The very room that she was in.
Seemed warm from floor to ceiling."

Rural Club (1); Portsmouth Training School (1) (2).



Marie I. Johnson, Deering

"Johnnie"

"A companion that is cheerful is worth gold."

Rural Club (1); Cattleton, Vt. Visit (3); V. W. C. A. (1) (2) (3); W. A. A. (2) (3); Bowling Team (3); Student Council (3); Division Basketball (1).



Josephine A. Karwacki, Manchester

"Joe"

"Give every man Thy ear, but few Thy voice.
Take each man's censure, but reserve Thy judgment."

Forum (1) (3); Nature Club (1) (2); Rural Club (1) (2) (3); Secretary (2), President (3); W. A. A. (1) (2) (3); Manchester Club (1) (2) (3); Dean's List (1).



Ruth Kingsbury, Tilton

"For I am nothing if not critical."

Rural Club (2) (3); Glee Club (1) (2); Spring Festival (1) (2).





Pauline Catherine Koulongis, Dover

"Paulie"

"Better not be at all than not be noble."

Division Basketball (1) (2); Hockey (1) (2); W. A. A. (1) (2) (3);
Color Team (1) (2) (3).



Fern Lloyd, North Walpole

"Knowledge is indeed that which next to virtue.

Truly and essential raises one man above another."

Rural Club (3); W. A. A. (1) (2) (3); Varsity Basketball (2) (3);
Varsity Hockey (1) (2); De La Salle (1) (2) (3); Dean's List (1);
Tennis Tournament (1) (2); Tennis Color Team (2).



Flora Longa, Merrimack

"Flo"

"Sweet food of sweetly uttered knowledge."

Class Baseball (1) (2); Class Volleyball (2); Class Basketball (1)
(2); Class Hockey (2); V. W. C. A. (1) (2) (3); Rural Club (3);
W. A. A. (2) (3).



Evelyn H. Lovejoy, Nashua

"Ev"

"Silence is more eloquent than words."

Nature Club (2); Academy of Science (3); W. A. A. (2) (3); Division
Basketball (2).



Madelene L. Pishon, Keene

"Mad"

"She dances like a light and buoyant flame."

De La Salle (1) (2) (3); Keene Club (1) (2) (3); Rural Club
(2) (3).



Georgia L. Plummer, West Lebanon

"Tiny"

"On that best portion of a good person's life,

The little nameless, unremembered acts of kindness and
love."

Nature Club (1) (2); Academy of Science (3); V. W. C. A. (1) (2)
(3); Bowling Tournament (3).

Bertha G. Raines, Hillsboro

"Bert", "Raine"

"The true, strong and sound mind is the mind that can embrace equally great things and small."

W. A. A. (2) (3); De La Salle (1) (2) (3); Nature Club (1) (2); Academy of Science (3); Division Basketball (1); Rural Club (1).



Marion Rollins, Cornish

"I would rather be small and shine than be large and cast a shadow."

W. A. A. (1) (2) (3); Head of Sports (2); Class, Color Badminton (1) (2) (3); Class, Color Hockey (1) (2); Class Basketball (1); Rural Club (3).



Evelyn K. Sawyer, Portsmouth

"Putt"

"He that hath knowledge spareth his words."

Portsmouth Training School (1) (2); De La Salle (3).



Janice S. Smith, Bennington, Vt.

"Jan"

"Call me what instrument you will,
Though you can fret me you can
Never play upon me!"

W. A. A. (2) (3).



Ruth Eunice Stearns, Winchester

"Euny", "Stearnsie"

"There is no greater delight than to be conscious of sincerity on self examination."

Y. W. C. A. (1) (2) (3); Orpheus (1); Division Hockey (1); Division Basketball (1); Scholarship Day (2).



Neil V. Sullivan, Manchester

"Sully"

"Success lies not in staying up at night to study, but staying awake in the daytime."

Alpha Pi Tau (1) (2) (3), Clerk (2), Vice-President (3); Manchester Club (1) (2) (3), Treasurer (1) (2), President (3); Forum (1) (2) (3), Treasurer (2), President (3); Class President (3); Rural Club (1) (2) (3); Program Committee (2); "K" Club (2) (3); Dramatic Club (2) (3); Varsity Basketball (1) (2) (3); Coach Senior Basketball (3); Varsity Track (2) (3); Manager of Debating (3); Freshman Debating (1); Varsity Debating (2) (3); Senior Life Saving (1) (2) (3); Chairman of Water Carnival (2); Chairman of Manchester Masquerade (2) (3); Intramural Speedball (1) (2) (3); De La Salle (1) (2) (3), Treasurer (2); Junior Varsity Baseball (2).





Helen Janet Szalajeska, Laconia

"Peg"

"The finest eloquence is that which gets things done."

Division Hockey (1) (2); Division Basketball (1) (2); Class Hockey (2); Color Hockey (2); De La Salle (1) (2) (3); W. A. A. (2) (3).



Ruth Travers, Whitefield

"Ruth"

"Always has time for a considerable word."

Glee Club (2) (3); Rural Club (2) (3), Vice-President (3); Nature Club (1) (2); Academy of Science (3); De La Salle (1) (2) (3); Treasurer (3); W. A. A. (1) (2) (3); May Festival (1) (2); Cantata (2) (3); Pageant (2); Division Hockey (1) (2); Division Basketball (1).



Maxine Weston, Lebanon

"Mac"

"Life is mostly froth and bubble;
Two things stand like stone:
Kindness in another's trouble,
Courage in her own."

Nature Club (1) (2); Academy of Science (3); Rural Club (1) (2); Glee Club (1) (2) (3); May Festival (1) (2) (3); Cantata (1) (2) (3); Dramatic Club (1) (2) (3); Class Hockey (1).



James Albert Whittimore, West Andover

"Jim"

"The surest way to hit a woman's heart is to take aim kneeling."

Alpha Pi Tau (1) (2) (3); Dramatic Club (2) (3); Rural Club (1) (2) (3); Treasurer (2); Men's Glee Club (1) (2); Christmas Cantata (1) (2); May Festival (1) (2); Senior Life Saving (2) (3); Class Basketball (1) (2) (3); Class Speedball (3); Track (2); Forum (2) (3); Tea Dance Committee (3).



Salwa Ziady, Manchester

"Peanut"

"Sensible people find nothing useless."

Manchester Club (1) (2) (3); De La Salle (1) (2) (3); Forum (1); Orpheus Club (2); W. A. A. (2) (3); Music Festival (1); Division Hockey (1); Division Basketball (2).



SENIOR PRESIDENT'S MESSAGE

ONCE again we observe Commencement. We pause to recollect the happy associations we have shared here with classmates and teachers. With regret we realize that most of these, except for brief renewals of acquaintances, are now to become memories of the experiences we are now leaving.

SENIORS, we now leave to enter new fields of endeavor in which we shall apply the principles and skills acquired during our period of preparation. I hope that whatever feeling of hesitation we have in assuming new responsibilities is a realization of the fact that the outcome of our work is dependent upon our own judgment and adaptability. Although we shall no longer have the direct guidance of our Alma Mater, let us remember its precepts so that our decisions will bring credit to our school, thus fulfilling our obligation.

UNDERGRADUATES, let this occasion be one of inventory for you. Profit by our mistakes and also by your own. Then, in the time remaining, strive to turn your efforts toward creating a stable foundation of knowledge and adaptability. This, coupled with individual initiative and self-reliance, will enable you to take your place in a world which we all shall find far more demanding than the campus and school have been.

Finally, the best wish which we can express, one to another, is that we may develop a fine sense of humor which will enable us to live, love, and laugh in a life of service and happiness.

FRED BARRY, '36

ELEMENTARY SENIORS

OFFICERS

President	Neil Sullivan	Secretary	Cecilia Flaherty
Vice-President	Marie Johnson	Treasurer	Eunice Stearns

SOME MUSICAL NOTES

FLORA LONGA	"Just a Blue-Eyed Blonde"
JANICE SMITH	"When I Grow Too Old to Dream"
FRANCES GRINDSTAFF	"Carolina Moon"
JOSEPHINE KARWACKI	"Better Think Twice"
CLAUDIA CROTEAU	"Dark Eyes"
EUNICE STEARNS	"I'm Just an Ordinary Human"
DOROTHY CONWAY	"Maybe I'm Wrong Again"
ALICE FISKE	"Don't Give Up The Ship"
SUSAN HAGLAND	"I Dream Too Much"
JOY EMERY	"So Shy"
ANNE CROWLEY	"I've Got My Fingers Crossed"
MADELINE PISHON	"Sweet And Slow"
ALICE DESMOND	"Nothing But The Best"
BERTHA RAINES	"You're The Top"
JUNE CLARK	"The Sweet-heart of Sigma Chi"
ETHEL CROTEAU	"Easy To Remember"
FERNE COFFIN	"How'm I Doin'"
MAXINE WESTON	"Double Trouble"
RUTH HUSSEY	"When Somebody Thinks You're Wonderful"
ISABEL COOK	"I Wake Up Smiling"
JEAN DUDLEY	"We Agree Perfectly"
RUTH TRAVERS	"Lovely To Look At"
MARIE JOHNSON	"At Your Service, Madame"
EDITH CUSHING	"My Heart Is An Open Book"
DAVID ARMSTRONG	"Country Boy"
EVELYN LOVEJOY	"Learnin'"
LAURA EAVES	"Old Faithful"
VANETTA CLAWSON	"Seein' Is Believin'"
FERN LLOYD	"Everything is Okey Dokey"
GEORGIA PLUMMER	"I'm A Little Big Shot Now"
HELEN SZALAJESKA	"Nonchalant"
JANET FLETCHER	"Take Me Back To My Boots And Saddle"
WINIFRED CHAMPAGNE	"Laughing At The Weather Man"
JAMES WHITTEMORE	"Drifting And Dreaming"
SALWA ZIADY	"What Did Sally Say?"
ETHEL FISH	"I'm Sitting High On A Hilltop"
EILEEN FLANAGAN	"I'd Like To Dance The Whole Night Thru"
EVA DOSTILIO	"Happy As The Day Is Long"
PAULINE KOULONGIS	"How About It?"
CECILIA FLAHERTY	"When Irish Eyes Are Smiling"
JEANNETTE HUNEAU	"For All We Know"
MYRIEL ANGWIN	"Foot Loose And Fancy Free"
CONSTANCE DUNLAP	"I'm Counting On You"
BERNICE BOOKSTROM	"My Heart's In The Right Place"
MARIAN ROLLINS	"I've Got a Pocket Full Of Sunshine"
RUTH KINGSBURY	"Lost In A Fog"
MILDRED CUTTER	"All's Well"
EVELYN SAWYER	"Black Eyed Susan Brown"
NEIL SULLIVAN	"Curly Top"
APPIAN WAY	"Avenue of Trees"
TO ROOM-MATES	"Good Night"
2nd FLOOR SOUTH END HUNTRESS	"Lights Out"
AFTER TEN	"In The Dark"
PRESIDENT MASON	"That Silver Haired Daddy Of Mine"
ELEMENTARY DIVISION	"Even The Best Of Friends Must Part"
SENIOR CLASS	"Gone"

JUNIOR HIGH SENIORS

OFFICERS

President	Lewis Montrone	Secretary	Elson Herrick
Vice-President	Virginia Hough	Treasurer	Harold Smith

TESTS AND MEASUREMENTS

Matching

Note: The authors wish to express their apologies, if not indebtedness, to Leonard S. Morrison, Head of the Department of Education, for the technical preparation which made this work a possibility.

- | | |
|-----------------------|--|
| 1. Dick Beard | 1. Too few to be good |
| 2. Ben Bennett | 2. Reincarnation of Henry VIII |
| 3. Marion Bergeron | 3. The girl who goes off with a Bing |
| 4. Irene Brosius | 4. Lady in Red |
| 5. Jenness Carlton | 5. Purer yet and Purer |
| 6. Ruth Clement | 6. "Hymn" Leader |
| 7. Betsey Crowell | 7. Ever-Reddy |
| 8. Geo Day | 8. Lea-ding in "Green Pastures" |
| 9. Thel Dickinson | 9. Pocket edition—Graveyard Anthology |
| 10. Gert Duval | 10. Appeal of Massachusetts Oath |
| 11. Barb Erwin | 11. Barba-sol man |
| 12. Trudy Emerson | 12. Voice of Experience |
| 13. Mabel Felch | 13. Madame De Farge |
| 14. Lee Gardner | 14. Same difference |
| 15. Fran Giles | 15. First class skipper |
| 16. El Hartshorn | 16. New York bound |
| 17. Ginee Hough | 17. A Day in the hills of Lebanon |
| 18. Curly Herrick | 18. "Flower in Crannied Wall" |
| 19. Rita Leonard | 19. Noun taking an object |
| 20. Waxy Lucien | 20. Don Juan Too? |
| 21. Ed Luneau | 21. Always Frank |
| 22. Ted Marston | 22. Professor of "Log" Rhythms |
| 23. Louie Montrone | 23. Whispering Baritone |
| 24. Thel Paige | 24. "Anchors Aweigh" |
| 25. Ev Pedersen | 25. "Key" to every solucien |
| 26. Vel Peirce | 26. Author of "Normal Living" |
| 27. Flo Potvin | 27. Million Dollar Baby |
| 28. Barb Purmort | 28. When Irish Eyes are Smiling |
| 29. Ruth Rix | 29. Outlived the Bastille |
| 30. Iona Sheebe | 30. Authority on the Dalton Plan |
| 31. Harold Smith | 31. Toreador |
| 32. Clifton Smith | 32. "Good A. M., good P. M., good evening Miss Buffum" |
| 33. Jan Snow | 33. One of a Pair |
| 34. Barb Stone | 34. We Want to be alone |
| 35. Fran Sweeney | 35. Worthy Home Membership |
| 36. Nina Usko | 36. Discovered Elmer |
| 37. Kay Walsh | 37. Week-end commuter |
| 38. Sarah Wyman | 38. A woman who could farce facts |
| 39. Mae Youngquist | 39. Hearts on the right side |
| 40. Bob Zieff | 40. Scoop on every story |
| 41. J. H. S. Division | 41. Oily to bed, oily to rise |
| 42. Arbor | 42. Third base octopus |
| | 43. The Great Debate: State rights vs. human interests |
| | 44. Worthy Use of Leisure Time |

(Key at the end of this section)

HIGH SCHOOL SENIORS

OFFICERS

President	Fred Barry	Secretary	Helen Pratt
Vice-President	Edythe Johnston	Treasurer	Joseph Baines

HOME ECONOMICS SUPERLATIVES

Most popular	Edee Johnston
Most attractive	Helen Schellenberg
Most studious	Kay Snyder
Most dignified	Theresa Burke
Best natured	Jennie Simonds
Most talkative	Eleanor Tarbox
Best dancer	Irene Szalajeska
Best sport	Edee Johnston
Most dramatic	Eleanor Tarbox
Wittiest	Irene Szalajeska
Quietest	Kay Snyder
Neatest	Jennie Simonds
Most athletic	Theresa Burke

There seems to be some question whether this space belongs to the Vermonters or the New Hampshireites, so we'll compromise, knowing that

The Best Sports are The Vermont Five AND the New Hampshire Two.

TRADES AND INDUSTRIES SUPERLATIVES

Motto: The most of the best for the least.

Wyman	Most responsible
Linscott	Most versatile
Sullivan	Most diplomatic
Streeter	Most businesslike
Baines	Most athletic
Corrette	Most musical

4H REMARKS

Class Motto: The clock does not stop ticking when it strikes.

Class Flower: Orchids.

Favorite Dish: Shrimp and pineapple salad garnished with pine needle sprigs.

Class Colors: Purple and red.

Class Advisor: Mr. Sprague W. Drenan.

Personalities:

Fred Barry	Maybe I'm Wrong Again
J. Laurence Bucher	There's A Tavern In The Town
Andrew Crooker, Jr.	The Gentleman Obviously Doesn't Believe
Mary Dearborn	I Feel Like a Feather In The Breeze
Jeannette E. Diotte	It's Been So Long
Helen Pratt	I'm Putting All My Eggs In One Basket
Clarence Richardson	Sing, College Boy
Miriam Roby	Beautiful Ohio
Barbara Severance	You're The Top
Paul Stimson	Blame It On My Youth
Newell Paire	Flirtation Walk

Activities:

Since our incorporation as a class on September 11, 1934, we have been carrying on with our wagon hitched to a star socially, professionally and otherwise. Combining work and play in Mr. Drenan's class, we presented two one-act plays written by Sis ad Dick. A good time was had by all.

Later on during the same year, the inclination to become one hundred percent socially minded resolved itself into a fact. On June 3, the class accompanied by Mr. and Mrs. Drenan traveled to the school camp where they enjoyed a very delicious steak dinner. Yes, and all the fixings too. Special mention must go to Stim, Larry and Barb for their fine work in the kitchen. It was a well-known fact that this group didn't care for any lunch that night.

During the first two nines Mr. Drenan entertained each part of our organization at his home. We digested a little Shakespeare along with some sweet cider and cakes. Shakespeare this way has its possibilities.

Mr. Gifford who substituted for Mr. Cutts also was imbued with the social idea. One day during the first nine he suggested a trip to Doukas Cafe for a luncheon class. This idea received a unanimous vote. The meeting was a huge success, and concomitant with a discussion of current labor problems, we gained a great deal of information about his wanderings while in the post-secondary schools of Europe.

KEY TO JUNIOR HIGH SENIORS TESTS AND MEASUREMENTS

1 — 11	22 — 7
2 — 23	23 — 2
3 — 28	24 — 15
4 — 10	25 — 40
5 — 32	26 — 34
6 — 35	27 — 36
7 — 13	28 — 29
8 — 17	29 — 27
9 — 9	30 — 31
10 — 37	31 — 14
11 — 44	32 — 26
12 — 30	33 — 43
13 — 18	34 — 19
14 — 8	35 — 6
15 — 3	36 — 33
16 — 39	37 — 4
17 — 22	38 — 20
18 — 42	39 — 38
19 — 21	40 — 12
20 — 25	41 — 1
21 — 14	42 — 34

Underclassmen



FOUR YEAR ENGLISH JUNIORS

First row: Katherine Gage, Arthur Giovannangeli, Shirley McIntyre, Richard Trufant, Elizabeth Scribner.

Second row: Dorothy Plaisted, Wesley Brett, Elizabeth Harris, James Jordan, Philip Ide.

HOME ECONOMICS JUNIORS

Seated: Evelyn Puffer, Charlotte Redden, Justine Bosquet, Lois Steere, Mary Foster.

Standing: Beatrice Judkins, Lois Melendy, Dorothy Downing, Maude Whitcomb.





TRADES AND INDUSTRIES JUNIORS

First row: Robert Omand, Robert Edmunds, Ira Stopford.

Second row: Paul Reason, George Corson, Amilcare Scarponi.

SOPHOMORE JUNIOR HIGH GROUP

First row: James Noukas, Lucille Craggy, Harriette Crosby, Dorothy Woinick, Doris Delaware, Florence Hutchinson, Beatrice Whitaker, Florence Duston, Lawrence Goss.

Second row: Eileen McKenna, Elizabeth Martin, Aina Hyrk, Jean Taylor, Helen Tsiotas, Phyllis O'Brien, Edith Noble, Ruth Chadwick, Dorothy Grace, Ruth Fitzgerald, Hortense Scott.

Third row: Sherman Joslin, James Leh, Stanley Johnson, June Kendall, Kenneth Creighton, Jane Langer, Donald Cooney, Lucille Plante, Walter Palmer, Ross Gale, (Ethel Howe, absent).





HOME ECONOMICS SOPHOMORES

First row: Helen Moore, Barbara Gardner, Ruth Little, Evelyn Zussey, Barbara Vogel.

Second row: Edith Rich, Elsie McConnell, Florence Edwards, Loretta Fitzgerald.

SOPHOMORE ELEMENTARY GROUP

First row: Louise Hatch, Esther Hussey, Natalie Haddock, Lois Parker, Ruth Brown, Arlene Jenkins, Marjorie Johnson.

Second row: Bessie Adams, Myra Hood, Ruth Hoey, Arlene Lund, Hazel Lewis, Velma Bartlett, Eleanor Child, Phyllis Adams, Anna Wilgeroth, Helen Noyes.

Third row: Dorothy Smith, Ruth McViegh, Avis Haskins, Isabelle Sprague, Lorraine Crosbie, Vernon Perkins, Katherine DeMerritt, Mary Stirk, Dorothy Sawyer, Dorothy Stewart, Rene Mathieu, (absent: Julia Floyd, Leona Mansfield).





TRADES AND INDUSTRIES SOPHOMORES

Seated: Paul Nordman, Carl Youngquist, Victor Seymour (left school), Luther Preston.

Standing: Daniel Tolman, Arthur Ide.

FRESHMAN ELEMENTARY GROUP

Front seated: Thomas MacDonald, Raymond Kulas.

First row: Elizabeth Cotton, Dorothea Ryans, Katherine Lynch, Alice Hoskiewicz, Barbara Lavoie, Sophie Raucykevich, Florence Allen, Alberta Nelson, LaMyra Harriman.

Second row: Ruth Harvey, Ann Pithie, Audrey Wells, Ruth Poore, Evelyn Werren, Lucille Jeanotte, Laura Verderber, Norma Nichols, Eleanor Hunt, Marjorie Andrews, Katherine Smith, Edna Wolti, Frances Stevens.

Third row: Irma Dostilio, Geneva Smith, Marie Messier, Catherine Stafford, Florence Callahan, Ruth Banfill, Grace Vickery, Nellie Malfet, Doris Fowler, Phyllis Moody, Barbara Carlsen, Blanche Bean, Roberta Leaf, Nellie Platukys, (Dorothy Rivard, Jannette Haggart, absent).





FRESHMAN JUNIOR HIGH GIRLS

First row: Helen Berry, Elizabeth Whittemore, Ellen Sullivan, Anna Cattabriga, Edna Twombly, Ruth Bond.

Second row: Grace Blanchard, Marion Truell, Mary Johnson, Alyce Fisher, Barbara Capron, Louise Lavoie, Lillian Ryley.

Third row: Nellie Walent, Bethel Emery, Barbara Noyes, Vera McMahon, Helen Thomas, Bertha McLoy, (Lois Smith, absent).

FRESHMAN JUNIOR HIGH BOYS

First row: Francis Dominick, Paul Clark, Robert Tapply, Chester Kingsman, David Applebaum.

Second row: Clair Wyman, Arthur Miller, Gordon Tate, Richard Hopwood, Ernest Fiske, David Greenlaw, James McKeon.

Third row: Horace Schnare, Henry Chase, Vladimir Leskowitz, Wilmer Carle, (Roger Travis, absent).





TRADES AND INDUSTRIES FRESHMEN

Seated: Richard Dundas, Paul Perkins, Harold Graeme, Edwin Randall, Bertrand Tardiff.

Standing: Clarence Volkman, Carl Bartlett.

FRESHMAN HOME ECONOMICS GROUP

First row: Dorothy Gilman, Priscilla Slocombe, Frances Hanson, Alfreda Kyrka, Charlotte Dole.

Second row: Edith Sanborn, Charlotte Furgerson, Vera Nichols, Esther Blood, Ruth Maker, Frances Cuddemi, Ruth Bernier.

Third row: Beverly Maxwell, Claire Paddleford, Thelma Dearborn, Marion Wood, Josephine Perkins, Dorothy Orser.





ART CLUB

THE Art Club centers its activities around craftwork, occasionally contributing talent to other campus activities such as the Mid-Year Ball. Under the management of Wesley Brett and the supervision of Miss Dorothy Wilens, Head of the Art Department, and Miss Prindle Hodges, Assistant, the club members, aided by many talented "independents", succeeded in turning the gymnasium into a Spanish patio for this annual social event.

Linoleum block printing was popular around Christmas and attractive personal cards were made, which were much in demand. Attention is being turned at present to the production of marionettes.

The officers this year are: Leora Gardner, President; Mabelle Felch, Vice-President; Ferne Coffin, Secretary. Miss Wilens and Miss Hodges are the faculty advisors.

ART STUDENTS

First row: Barbara McComb, Mabel Felch, Leora Gardner, Jean Macmillan.

Second row: Dorothy Smith, Ferne Coffin, Frances Smith, Miss Hodges, Hazeldean Reed, Virginia Richardson, Ruth McViegh.



ORPHEUS CLUB

ORPHEUS, the God of Music, must be mighty proud to have such a fine organization as the K. N. S. Orpheus Club under his patronage. He might well have written the objectives of the club, so fine are they:

- (1). To raise the standards of music in K. N. S.
- (2). To promote sociability and cooperation among the members.
- (3). To broaden the musical experience and background of members.

To execute these objectives Orpheus meetings are held once a month. The following were a few of the subjects for the meetings: "Instruments of the Orchestra", "Correlation of Art and Music", "Till Eulenspiegel", and guest night with guest artists.

Virginia Hough sits on the left of Orpheus as President of the club. Ruth Clement sits on the right of Orpheus as Chairman of the Program Committee. R. Mathiew, A. Richards and E. Puffer sit at the feet of Orpheus as Vice-President, Secretary and Treasurer respectively.

MUSIC STUDENTS

First row: Virginia Symonds, Sarah Wyman, Ruth Clement, Virginia Hough, Frances Sweeney, Mabel Felch, Arlene Richards.

Second row: Ernest Fiske, Laura Eaves, Marion Truell, Grace Vickery, Hazeldean Reed, Laura Erickson, Jane Jaffrey, D. Wilder Goodale.

Third row: Vladimir Leskowitz, Sophie Raucykevich, Helen Berry, Mr. Davis, Dorothy Conway, Ruth McViegh, Henry Chase.



STUDENT COUNCIL

ON the recommendation of the K. N. S. delegates who attended the Eastern States Convention in New York City last year, it was decided to initiate a Student Council at Keene Normal School. To this group of students belongs the credit for planning a system of elections for membership to the Student Council, which makes it a truly representative body. Members were elected according to its plan and the first meeting was held in November.

In attempting to establish a worthwhile organization, the Student Council has been working carefully but steadily. Since its first meeting it has drawn up, revised and accepted a constitution; it has decided to assume the supervision of the activities of Scholarship Day; it is working on a point system "to distribute the club activities among more students and to promote greater efficiency in club work." All of these activities, though they may seem unimportant in themselves, have contributed toward the accomplishment of the purpose of the Student Council, which, according to the constitution, is: "to serve as a medium through which greater cooperation may be obtained between students and faculty in matters pertaining to student interests and activities; to take initiative steps in upholding and promoting the standards of Keene Normal School."

Seated: Dean Carle, Miss Farnum, Dean Esten, Marcella Finley, Katherine Gage, Amilcare Scarponi, Barbara Severance, Arthur Giovannangeli.

Standing: David Applebaum, Ruth Bernier, Marie Johnson, Dorothy Stewart, Elizabeth Harris, Blanche Bean, Florence Hutchinson, Leora Gardner, Andrew Crooker.



KEENE NORMAL SCHOOL MUSIC FESTIVAL

THE third annual Festival of Music was successfully held on May 10, 11, and 12, in Spaulding Gymnasium. In addition to the music clubs of the school, the following civic musical organizations cooperated: the Keene Orchestral Society, the MacDowell Male Chorus, the Keene Maennerchor, and the choirs of the several city churches.

The opening concert consisted of a miscellaneous program of music by the Keene Orchestral Society, the United Chorus of Choirs and the Keene Maennerchor.

The second evening was given over to the Woman's Club Chorus and the MacDowell Club with Mr. Doric Alviani, Baritone, of Boston, as the assisting artist.

In the final concert, the opera "Faust" by Gounod was presented in choral form by the combined musical groups and assisted by the following soloists: Grace Leslie, contralto of New York, who took the part of Marguerite; George H. Boynton, tenor of Boston, as Faust; Doric Alviani, of Boston, as Valentine; Elizabeth W. Beaman, soprano, of Boston, the part of Siebel; and Mr. Jesse F. Davis, of Hampstead, a student at K. N. S., baritone, as Mephistopholes.

In addition to the performance of Faust, the soloists, including Miss Leslie, Miss Worcester and Mr. Boynton sang several recital numbers as a second part of the evening's entertainment, and the entire chorus and orchestra rendered several resounding chorus pieces including "Land of Our Hearts" by Chadwick and "Hallelujah Chorus" from Mount of Olives by Beethoven.

Thus was brought to a close another successful cooperative musical undertaking, reflecting credit to all those who participated, furnishing the music lovers of Keene with an entertaining and inspiring experience and fulfilling a long-cherished dream of President Wallace E. Mason and Mr. Harry W. Davis, Music Director.



CHAPEL CHOIR

THE Chapel Choir is as essential to our Monday Chapels as an organ is essential to a church because it creates a devotional spirit imperative to the services.

Granted that sacred music is the most difficult for chorus, our choir announces through its title that it has conquered, and having conquered, secular works come with comparative ease.

This organization has become so versatile that its presence is requested throughout the state, fulfilling various sorts of engagements such as: Vespers services, Educator's Convention, and Meredith's Women's Club.

Mr. Davis, the proficient conductor, has selected with much precision those voices which blend well and with equal precision has worked for good balance of parts.

First row: Frances Sweeney, Loraine Rocheleau, Helen Schellenberg, Miss McLemore, Mr. Davis, Virginia Hough, Ruth Clement, Virginia Symonds, Mabel Felch.

Second row: Vladimir Leskowitz, Lucille Plante, LaMyra Harriman, Elizabeth Goodale, Elizabeth Giradet, Miriam Roby, Julia Floyd, Hazel Brown, Velma Bartlett, Raymond Kulas, Richard Hopwood.

Third row: James McKeon, Ernest Fiske, Claire Paddleford, Marion Truell, Hazeldean Reed, Sophie Raucykevich, Grace Vickery, Dorothy Orser, Irma Dostilio, S. Wilder Goodale.



ORCHESTRA

"FRESHMEN who play musical instruments are requested to bring them to K. N. S." (From a letter to the entering class.)

So the class of '38 increased our orchestra to about twice its previous size, with the result that K. N. S. has an ultra-active organization.

There's something in the participation of music that creates an enthusiasm uncommon to the other arts. This is due to the fact that we amateurs swell with pride at being able to interpret to some extent the works of masters. Although this feeling may be subconscious, it is there, and exhibited by ever increasing interest.

BAND

SO Plymouth Normal School has a newly organized band! "And so have we, and so have we."

With the coming of Mr. Bushnell to the K. N. S. faculty came the addition of a band for K. N. S. students.

We might call the band our latest offspring, and K. N. S. students the proud parents. Therefore it is up to us to foster its growth that it may become an energetic and prosperous donator to K. N. S. activities.





TO Harry B. Preston not only the Kronicle Board but the entire student body of Keene Normal School extends appreciative thanks. Throughout the last six years as faculty adviser of the "Kronicle", he has given most unselfishly of his time and effort to our journalistic development. We realize that only through his cooperative guidance has our student publication been made possible—and to him attribute the greater part of its success.



KRONICLE BOARD

Faculty adviser	Harry B. Preston
Consulting editor	Roy A. Sullivan
Editor-in-chief	Helen M. Pratt, '36, Keene
Associate editors	Andrew Crooker, Jr., '36, Hillsboro; Wesley F. Brett, '37, Keene, in charge of year book.
News editors	Barbara Severance, '36, Hillsboro; Velma D. Peirce, '36, Peterboro.
Business and circulation managers	Paul K. Stimson, '36, Milford; Robert F. Edmunds, '37 Loudon.
Boys' sports editors	Richard O. Trufant, '37, Peterboro; James A. Jordan, '37, Stratford.
Girls' sports editors	Shirley McIntyre, '37, Whitefield; Georgia F. Day, '36, Manchester.
School exchanges	Ellen Hartshorn, '36, Manchester
New Hampshire schools and educational notes ..	Katherine Gage, '37, Manchester.
Trades and Industries editor	Arthur J. Ide, '38, West Swanzey
Music editor	Virginia Symonds, '37, Contoocook
Art editor	Leora Gardner, '36, Lancaster
Home economics editor	Lois E. Steere, '37, Littleton
Fraternity editors	Kappa, Ross M. Gale, '37, Rutland, Vt.;
Alpha, Waldo R. Streeter, '36, Keene.	
Alumni editors	Mary L. Dearborn, '36, Woodsville;
Ira Stopford, '37, Portsmouth.	
Secretary of the Board	Helen Tsiotas, '37, Manchester

Front row seated: Paul Stimson, Wesley Brett, Helen Pratt, Andrew Crooker, Mr. Sullivan.

Second row: Katherine Gage, Leora Gardner, Ellen Hartshorn, Lois Steere, Barbara Severance, Shirley McIntyre, Virginia Symonds, Helen Tsiotas, Arthur Ide.

Third row: Waldo Streeter, James Jordan, Robert Edmunds.

TOLERANCE

IT is very easy to agree that tolerance is a fine thing, to announce with an air of superiority that, with even a modicum of this excellent attribute, a solution of our neighbors' domestic difficulties, harmony in the European situation, or the peace of the whole world, could be achieved. Certainly we have no thought, now, of minimizing the importance, or the efficacy, of tolerance, as a cure-all for the ailments of civilization. In these days of violent nationalisms, racial prejudices, and general social unrest, nothing except a greatly magnified spirit of forbearance can avert international catastrophe; and now, more than ever before, it is imperative that we attain this broader attitude in all our relationships. Tolerance is the answer. But it seems to us a good deal like Professor Cutts' famous remedy for unemployment, which is "work".

Yes, we readily recognize the value of tolerance, but, as Robert Hutchins, president of Chicago University, remarks, "Tolerance is like a sense of humor. Everybody thinks he has it, but it never works when he personally is involved. We think the Germans, Italians, Russians, and Japanese should be more tolerant. We think . . . that Californians, New Yorkers, or Texans should be more tolerant. We think that everybody should be more tolerant except ourselves." Tolerance, like charity, begins at home. Before we set out to reform the world, let us make sure we have removed the beam from our own eye.

Tolerance means open-mindedness not only in situations remote from ourselves, but also in those affairs which directly and vitally affect our own life or happiness. Nor can we substitute indifference; "Open-mindedness does not mean vacant mindedness". It isn't nearly as simple as that. It means looking fairly and squarely at both sides of the issue and making our own unprejudiced decision; more than that, letting other people make their own decisions, and not questioning their right to do so, whatever their nationality or creed. It means respecting every person's right to live and speak as he finds best. Henry Van Loon says that intolerance is the result of fear, and I would like to add, of that underlying cause of fear, ignorance. When we have eliminated the ignorance and fear which have so constantly beset the human race we won't have to worry about intolerance. There won't be any.

The only method is education—education in open-mindedness and self-reliance. We, let us admit, are an intolerant generation. But the only way we can help our successors to become more fearless and open-minded is by our example. So it's up to us.

"It is not a merit to tolerate,
but rather a crime to be intolerant."

—Shelley

Helen M. Pratt, editor-in-chief.

SAMUEL GRAFFLIN'S PHILOSOPHY

EDUCATION is that deep and rich culture of Mind and Character which results in a Wise-hearted grasp of terms and a Warm and Skillful Interest in the Making of a Better World.

A statesman, in any realm, is one whose knowledge and grasp of the past enables him to know what men have done—and why: whose knowledge and grasp of the present, in the light of the past, fits him to cope with the present situation—and—whose vision for the future, in the light of the past and the grasp of the present, qualifies him for the planning of a better world.

A life philosophy is that set of mental moorings which we progressively achieve for ourselves, through a deep love for, and an earnest quest after untrammelled truth.

Said the Cynic: "I could make a better world than this."
Said the Sage: "That's why God put you here. Go to it!"

Discipline is the The Training which makes Punishment Unnecessary.

DO YOU REMEMBER—

- that strange week when everyone arrived on campus, when Ira Stopford and Mickey Scarponi broke all speed records wheeling trunks from the depot to school, and the old Alma Mater seemed more like home than home does and the faculty were still your best friends?
- seeing or being curious freshmen or wise sophomores?
- the cider and doughnuts that were served at the freshman reception?
- the flat feet and "charlie-horses" after the annual trip to Monadnock, October nineteenth?
- the curious, ingenious, "hold-that-tiger" Alpha treasure hunts?
- the county fair, with its side-shows and fancy stepping?
- when Lillian Riley was crowned queen of the Masquerade, Georgia Plummer took first prize for the most beautiful costume, Dorothy Smith, second; and Jesse Davis and Vernon Perkins gambled for originality?
- when the "Little Shot" would gladly have shot the man who didn't fix that curtain?
- when "Macbeth" gained new lovers of Shakespeare and Mr. Drenan?
- Fall Sports Day, when Fitchburg women played side by side with us; and the funeral of the late demented "bone of contention" was held?
- the challenge brought to us by Vernon Scott?
- the glorious Christmas vacation?
- the Kappa Koons of 1936, and the quartet which later covered itself with glory?
- the gay señoritas who served punch at the Midyear Ball; the Mexican jugs and the cacti?
- the old jokes which are served with the old wine which is not served at the annual men's get-together?
- the mysterious teas oft'times held in the north reception room of the Mason Library? R. S. V. P.
- the thrilling game with Gorham—Keene-42, Gorham-37, with Art making thirteen points, and Stan twelve?
- the classes which Mr. Morrison taught with his hip-boots on, and the steamship line which navigated the Appian Canal?
- the hustle and bustle over the fourteenth annual state drama day contests?
- cleaning your white shoes for Scholarship Day?
- the famous Music Festival in May, which always brings wonderful talent and great applause to K. N. S.?

And do you remember what happens to perfectly sincere and capable students once in their lives? They attend the carnival and picnic, and go to the Baccalaureate service, they thrill at the Pageant, and weep on Rose Night, laugh at Class Day exercises, dig at the Planting of the Ivy, and then suddenly they graduate and live happy ever afterwards.

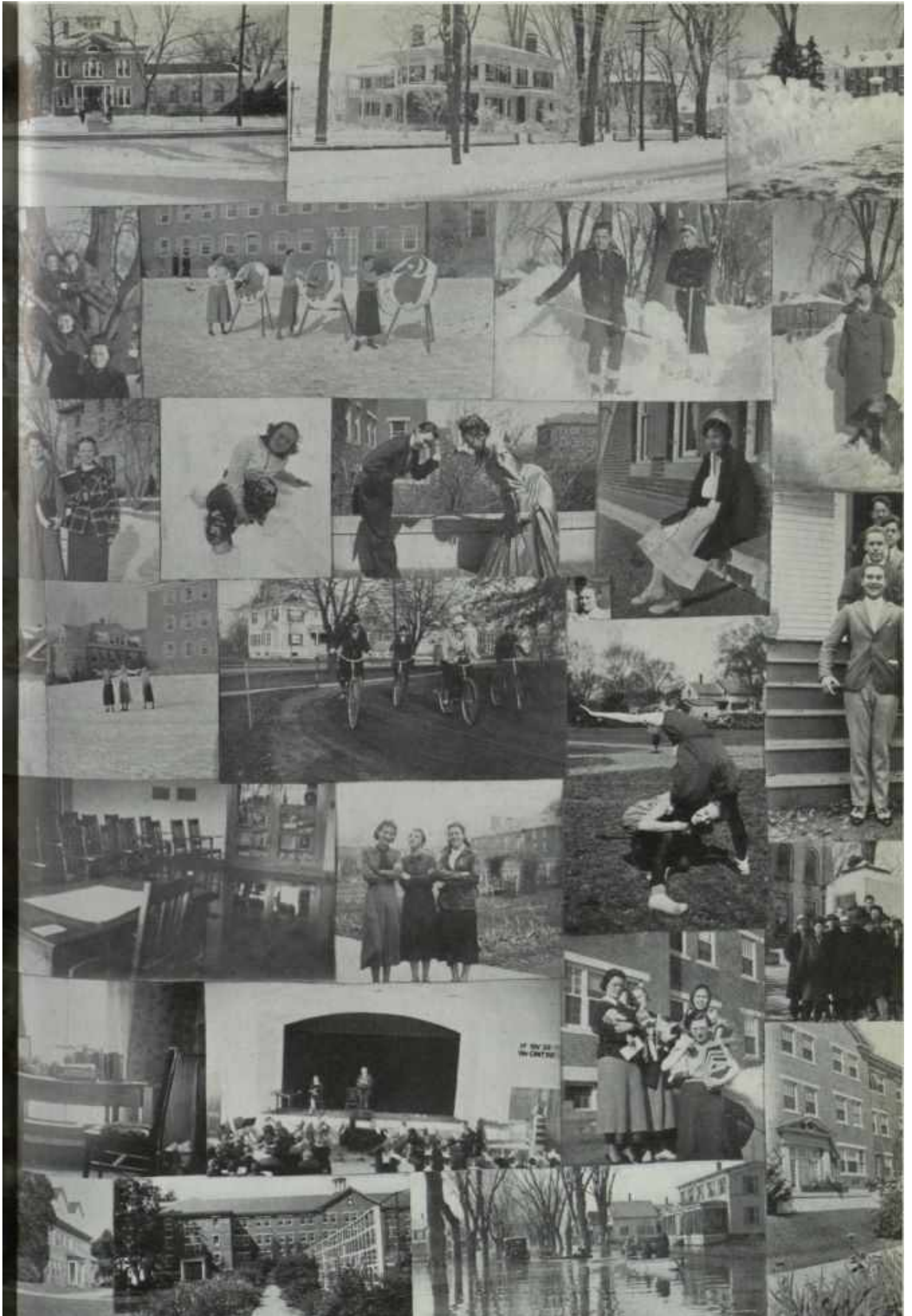


ALMA MATER

We love thee, old Keene Normal,
And with the red and white
Where e'er our work shall call us,
We'll stand with thee for right;
We'll ever guard thy honor and cherish memories;
Keene Normal, Alma Mater, All Hail to thee, All Hail to thee!

We'll ever guard thy teaching,—
Responsibility,
This shall in all things guide us
To service full and free;
For all thy sons and daughters will always stand for thee!
Keene Normal, Alma Mater, All Hail, All Hail to thee!





MID-YEAR BALL

MIDYEAR BALL with its color, soft lights and sweet music lends a beautiful social event to the heart of the year. More than eighty couples enjoyed the annual event held on January twenty-fourth, this year. Prior to the dancing, a reception was held with the patrons and patronesses, President and Mrs. Wallace E. Mason, H. Dwight Carle, and Miss Isabelle U. Esten, Miss Ida M. Fernald, Miss Edith MacArthur, Miss Mabel R. Brown, and Mr. and Mrs. Sprague W. Drenan, receiving.

After the reception the pleasing rhythm of Doug Newton's orchestra invited dancing. The lovely evening gowns, together with the picturesque surroundings, made a colorful and truly striking picture.

The committee in general charge of arrangements consisted of Fred L. Barry, Miss Edythe Johnston, Miss Helen M. Pratt and Joseph Baines. The art department deserves a great deal of credit for its splendid cooperation in decorating the gym in the warm atmosphere of Old Mexico complete in every detail.

TEA DANCE

Those students who attended the mid-year ball were furnished an opportunity to entertain their guests at a second delightful function when the Nu Beta Upsilon and Alpha Pi Tau societies sponsored their annual Tea Dance on Saturday afternoon.

Honorary members of both organizations acted as patrons and patronesses, and the entire faculty were invited to attend.

A blue and yellow color scheme was carried out in fragrant spring flowers and other pleasing details. Dancing to the music of Frank Bush's orchestra was enjoyed, and tea was served by candlelight. Dean Esten poured at the faculty table, and other guests were served by a group of students.

MANCHESTER CLUB

THE members of the club are those students who are residents of Manchester and those who have attended Manchester schools.

On November 30 the club sponsored a dance at the A. C. A. hall in Manchester for the purpose of securing funds for the Manchester Club Masquerade. At this dance there was an election of officers among the alumni present for the year 1935-36.

On Saturday, December 7, the Manchester Club presented its 25th Annual Masquerade in the Spaulding Gymnasium. The committee in charge of this event consisted of Neil Sullivan, James Noucas, Mae Youngquist, and Dean Reed. Lillian Riley of Hillsborough won the honor of "Queen of the Masquerade" and was presented with a cup donated by a Manchester concern.

The club held two meetings at the school camp before these events to make plans for them and also for the entertainment of the members.

The following are the officers of the Manchester Club for the year 1935-36:

President	Neil Sullivan
Vice-President	Mae Youngquist
Secretary	Doris Delaware
Treasurer	Carl Youngquist



TO MOTHER

You struggled blindly for my soul,
And wept for me such bitter tears,
That through your faith my faith grew whole,
And fearless of the coming years.

For in the path of doubt and dread
You would not let me walk alone,
But prayed the prayers I left unsaid,
And sought the God I did disown.

You gave to me no word of blame
But wrapt me in your love's belief;
Dear love that burnt my sin like flame,
And left me worthy of your grief.

D. Wilder Goodale

DESIDERATUM

I held a star within my hands
And wondered at the cold and luminous toy
And was in awe—and reverent to God
For giving such a perfect gift.
But long days passed and I grew tired
Of such unfeeling loveliness—
And when I found a midnight pool
Deep hidden in a lonely wood
And peered into unlighted depths,
I dropped my star therein and watched it fall
And down . . . and down . . . and on and on
A silver comet through the crystal miles
—And when at last it passed from view,
I turned to gaze up at the moon

Ruth McVeigh

HOSPITALITY

There isn't much I have to offer you—
I haven't very much myself, you see,
Such as I have, though, you are welcome to—
No little cakes with marmalade and tea,
Served in a gracious room, before the fire;
No polished table under Flemish lace,
With gleaming silver, bright as heart's desire,
And fragile crystal etched with antique grace
That shimmers in the changeful candlelight;
No deeply-cushioned chairs and idle talk;
No faintly-perfumed linen sheets at night;
Not even shaded lawn with winding walk.

But you may sit beneath my apple-tree,
Share my blue sky, and all out-doors, with me.

Helen Pratt

ETERNITY

I said,
I'll count the grains of sand
Upon this beach. One, two, three. . . .
I looked around
And sighed!

BESIDE A SOLDIER'S GRAVE

I must be very bitter,
But, by this grave
The silence of the cannon drives me mad.
If cannon are not quiet things,
What made this form so still?
Yes,
I must be very bitter.
Standing here,
The banging of the snow to earth deafens me.
If snow is such a silent thing,
What is this roaring in my ears?
God! take away the cannon,
It brings too great a silence:
And take away the snow,
It makes too great a sound,
As it comes rushing down to cover the wound
Of this grave
It will never heal.

Hazel Lewis

OPPORTUNITY

FRIDAY with its inexorable regularity had rolled around once more bringing at a long last an end to the first period class. It was with a feeling of relaxation that I passed from this class to the library not so much with the idea of studying as a place to spend the hour before the next class.

I settled down at the reading room table between two members of my class and opposite from two other students. Rather reluctantly I opened my notebook and drew towards me my text. I had almost gotten well started when the student to my left jabbed me with his elbow and I questioningly looked over—lost. We spent ten minutes discussing in whispers the magazine on skiing he had discovered. Then I again returned to my books and was soon at least partially lost in perusal thereof.

The students coming and going through the corridors had not disturbed me, nor did I until I thought of it afterwards notice the rather sudden influx of students at a quarter past the hour. Subconsciously I noted that one of the irregularly flitting shadows stopped after passing the entrance to the room where we studied; paused a moment in indecision and then returned. I thought probably to the room adjacent, then forgot it as I continued reading. But I was brought back to actualities with a thrill running up my spine as the fur of a coat collar brushed against my face and the sweetest voice I have ever heard whispered, "What are you doing Saturday night?" Startled I looked up and my bewildered gaze fell upon the most beautiful girl in school, in my estimation. One dreams of such a girl but seldom sees her. Five feet eight inches tall she stood but looked taller in her winter coat, conventionally but nicely groomed, the most perfect clear skin forming wonderfully curved cheeks glowing from the cold, the most kissable lips on campus, dark brown eyes that glittered like black diamonds with the fire of smouldering emotion, a fine white forehead surmounted by burnished copper tresses that formed a golden red halo about her head.

A sudden wild impulse made contact in some remote corner of my brain: I had an overwhelming desire to put my arm around her and draw her towards me but from amongst the jumble of rioting thoughts calm conventional second thought made me desist.

With mingled disbelief and incredulity I murmured, "I was going to Marlow." At my words she stepped back a trifle, disappointment written in large lines upon her face and a look of surprise showing in her eyes. Hurriedly I added, "One doesn't get a chance like this often." With scarce time to think she asked, "How about me? Neither do I!" and hurriedly she left.

Stupidly I stared after her. All I could think was that I had waited three years for such an opportunity only to let it pass.

Each week as Friday rolls around I look forward to the recurrence of that hour and tho I wait patiently and she occasionally passes by she does not stop. Opportunity knocks but once.

I. D. E.

BALLADE IN A DESERTED GARDEN

This—not very long ago
Was a fair lady's flower-bed.
(No one has told me, but I know.)
These very paths she used to tread—
Now overrun by weeds, ill-bred,
That crowd and push, and mock at me,
And for my feet a snare have spread,
Where are the flowers that used to be?

Here sweet-faced pansies used to grow,
Blue larkspur there, and poppies red,
And lilies in a stately row.
Now there are ugly weeds, instead.
The roses,—birdsongs overhead,—
The humming of the hov'ring bee—
Where are they now? Why have they fled?
Where are the flow'rs that used to be?

Where are the buds that used to blow—
The fragrance that the blossoms shed?
Where are the hands that made them grow—
Gay feet that tripped the path which led
To a rustic bench beneath the tree?
Where are the whispered words she said?
Where are the flow'rs that used to be?

ENVOI

All, with the fleeting hours, have sped
Nothing is left that man may see.
For here are only brown stalks, dead,
Where are the flowers that used to be?

Helen Pratt

Societies



NU BETA UPSILON

THE Nu Beta Upsilon Sorority has had quite an active program this year. We gave a tea to the Home Economics freshmen early last fall. This has proven to be an excellent way of becoming acquainted with each other.

Our second social event was a Hallowe'en party given to the freshmen. This was held at the school camp.

At our meetings, we have been having a series of talks on home life in foreign countries. These have been given by members of the faculty and friends in town. Those who have spoken to us are:

Mr. Alexander Gifford, Mrs. Ewing, Dr. J. O. Stuart Murray, Mrs. Marion Hudson, Mrs. George Parker, Miss Vryling Buffum, Miss Isabelle Blake, Mrs. Nicholas Houpis.

Our contribution to the Saturday night programs was a play depicting the history of Blake House. This was taken from one of the issues of the Yankee magazine.

At mid-years, we joined with the Alpha Pi Tau Fraternity in sponsoring the Tea Dance.

Other plans for the year have included a Christmas box for a needy family, the Sorority dance, and our annual picnic and farewell to Seniors.

First row: Dorothy Downing, Justine Bosquet, Barbara Gardner, Barbara Vogel, Marcella Finley, Lois Steere, Ruth Maker, Maude Whitcomb, Marion Wood.

Second row: Charlotte Redden, Helen Moore, Vera Nichols, Evelyn Zussey, Eleanor Tarbox, Jennie Simonds, Helen Schellenberg, Irene Szalajeska, Mary Foster, Dorothy Orser, Edith Rich, Esther Blood, Ruth Bernier.

Third row: Frances Cuddemi, Dorothy Gilman, Barbara McComb, Charlotte Furgerson, Beatrice Judkins, Lois Melendy, Elsie McConnell, Josephine Perkins, Alfreda Kyrka, Frances Hanson, Priscilla Slocombe, Charlotte Dole, Thelma Dearborn, Florence Edwards, Loretta Fitzgerald, Claire Paddleford.



SIGMA PI EPSILON

THE purposes of Sigma Pi Epsilon are to raise the English standards of Keene Normal School, to further appreciation of fine literature, and to encourage the development of talent in creative writing among its students. The annual poetry contest which it sponsors is becoming one of the outstanding features of the cultural life of the school. A member of the Book-of-the-Month Club, it contributes yearly to the school library some of the finest of current literature both fiction and non-fiction. In the spring it sponsors for the entertainment of the student body the production of a program of one-act plays written by the juniors of the four-year English curriculum. Its semi-monthly meetings, hours of keen enjoyment for all its members, have this year been devoted to the study of modern dramatists and their work with particular stress laid upon the plays of the present season.

Front row: Barbara Severance, Katherine Gage, Dorothy Plaisted, Helen Pratt, Ellen Hartshorn, Miriam Roby.

Second row: Aina Hyrk, Jean Taylor, Lucille Plante, Elizabeth Scribner, Elizabeth Harris, Phyllis O'Brien, Hortense Scott, Harriette Crosby.

Third row: Lucille Craggy, Mae Youngquist, Shirley McIntyre.



ALPHA PI TAU FRATERNITY

IN a college of education a fraternity performs several important functions. It establishes ideals, adds a social culture to campus life and builds a spirit of cooperation. To those fortunate enough to be selected from the student-body to become members of Alpha Pi Tau, it means the opportunity of working with men for something beyond selfish ends.

From the time you arrive in Keene, Freshman Week, until the commencement day, four years later, you are in constant association with Alpha men, in classes, in clubs, and on the field. For this reason Alpha Pi Tau demands high ideals and develops popular strong personalities who are interested in your success and happiness in this institution and in the teaching profession.

It is with a great deal of pleasure that we become your hosts both at the annual fall dance and again at Midyears when we unite with the Nu Beta Upsilon Sorority for the Tea Dance. In May we entertain you again with our social, striving to bring to you the gayest social of the year.

To our friends of the Kappa Delta Phi Fraternity we extend our hearty congratulations in winning the Scholarship cup. We have watched with considerable interest the competition this year and are prepared to make an earnest endeavor to regain the cup in 1936.

First row: Walter Lucien, Amilcare Scarponi, Neil Sullivan, Paul Stimson, Wesley Brett, Ira Stopford, Harold Smith.

Second row: James Noukas, James Leh, Elson Herrick, Lawrence Goss, Louis Montrone, James Whittemore, Joseph Baines.

Third row: Russell Raymond, Stanley Johnson, Richard Beard, James Jordan, Waldo Streeter, Newell Paire, Robert Edmunds, Paul Nordman, Robert Omand, David Armstrong.



OFFICERS OF ALPHA PI TAU FRATERNITY

President	Paul Stimson
Vice-President	Neil Sullivan
Secretary	Wesley Brett
Treasurer	Amilcare Scarponi

Master of Ceremonies	Walter Lucien
Chaplain	David Armstrong
Freshman Adviser	James Leh

ALPHA PI TAU PLEDGEES

First row: Francis Dominick, Robert Tapply, Paul Clark, Paul McNamara, Gordon Tate.

Second row: Raymond Kulas, Chester Kingsman, Richard Hopwood, Paul Perkins, David Applebaum.

Third row: James McKeon, David Greenlaw, Ernest Fiske, Clair Wyman, Harold Graeme.



KAPPA DELTA PHI

THE Gamma Chapter of the Kappa Delta Phi fraternity formally opened its fifteenth anniversary year with the annual Faculty Tea. At this time each year the house is opened to the faculty for inspection. To quote from the Sentinel, "After a tour of inspection of the house, with the members led by President Linscott as guide, the faculty expressed much admiration for the attractiveness of the rooms of the young men." The committee chairman in charge was Andrew Crooker, Jr., assisted by Kenneth Creighton and Jesse Davis. Tea was poured by Dean of Women, Isabelle U. Esten and Assistant Dean Ida E. Fernald.

On Hallowe'en evening, Kappa sponsored a get-to-gether smoker for the men of the school. The Honorable G. F. T. Trask, mayor of Keene was the speaker. He gave us insight into the workings of the city government. Refreshments were served under the direction of the committee in charge; Vernon Perkins chairman, assisted by Walter Palmer and Robert Piper.

The 15th annual dance was held on November 15. The many alumni and friends who were present remarked about the decorations. The decorating committee in charge of Jesse Davis used a different artistic effect than has heretofore been tried, utilizing the center of the floor for a garden arrangement with a large crystal ball in the center banked by potted plants and greenery. Overhead were paper streamers of the fraternity colors, attractively arranged, and colored flood lights helped to make the pleasing atmosphere. The committee in charge: Jesse Davis decorations, Donald Cooney general program, and Kenneth Creighton refreshments.

The annual KAPPA KOONS were presented for approval on January 11. One comment was, "... one of the most enjoyable Saturday night socials ..." when the Kappa Delta Phi fraternity staged its annual minstrel show, 'Kappa Koons', before a large audience of fellow students and faculty members. The end men, Fred Barry, Vernon Perkins, Richard Trufant, and Ross Gale, presented pertinent jokes and wisecracks about some student or faculty members. Besides this there were several specialty numbers: instrumental solos by Clarence Richardson and Paul Corrette, and vocal solos by Jesse Davis and Sherman Joslin. In the midst of these events and the group singing, Kappa was pleased to present Miss Mary Lashua of Lincoln School as guest star who became one of the hits of the show. The committee in charge was Fred Barry general chairman, assisted by Daniel Sullivan, Jesse Davis and Laurence Bucher.

First row: Donald Cooney, Ross Gale, Richard Trufant, Andrew Crooker, Frank Linscott, Vernon Perkins, Kenneth Creighton, Jesse Davis.

Second row: Paul Corrette, Theodore Marston, Carl Bartlett, Henry Chase, Clarence Volkman, Rene Mathieu, Arthur Ide.

Third row: Carl Youngquist, Sherman Joslin, Clifton Smith, Walter Palmer, David Tolman, Luther Preston.



THE ACADEMY OF SCIENCE

AT the beginning of the year the Nature Club and the Academy of Science combined into one organization. The membership, including the new initiates, is now forty-eight. The aim of the club has been to foster trips of scientific interest, out-of-door hiking, lectures, and activities of subjects related to science. To this end we have taken already a trip to Mt. Monadnock, a trip to the X-Ray department of the hospital, a trip to the Granite State Studio, had a lecture on "Ferns" by Mr. Winslow, and have sponsored "Open House" at camp. We plan other trips to Beaver Falls, Pot Holes, Sugar Camps and others. Our main indoor project has been the arranging of an extensive museum exhibit just acquired by the Normal School.

OFFICERS

President	Richard Trufant
Vice-President	Dorothy Stewart
Secretary	Helen Noyes
Treasurer	Robert Edmunds

Front: David Applebaum, David Greenlaw, Luther Preston, Raymond Kulas.

Front row: Velma Bartlett, Kenneth Creighton, Eleanor Child, Mrs. Ramsden, Richard Trufant, Helen Noyes, Robert Edmunds, Mr. Carle, Ellen Hartshorn.

Second row: Ruth Brown, Maxine Weston, Alice Desmond, Isabelle Cook, Alfreda Kyrka, Phyllis O'Brien, Dorothy Woinick, Doris Delaware, Jean Taylor, Nina Usko, Mary Stirk.

Third row: Thelma Dearborn, Donald Cooney, Sherman Joslin, Ruth Chadwick, Ruth Fitzgerald, Alice Fiske, Avis Haskins, Kermit Bennett, Shirley McIntyre, James Jordan, Natalie Haddock, Ruth Hoey, Esther Hussey, Barbara Capron, Barbara Noyes, Ross Gale, Vernon Perkins.



DE LA SALLE CLUB

THE De La Salle Club is an organization instituted for the Catholic students of Keene Normal School, and under the direction and guidance of a chaplain. The purpose of the club is the promotion of religious, educational, and social interests. Its main function is the annual dance held at Armstrong Hall. Other activities include an annual entertainment of the Catholic Daughters of Keene, initiation of new members, and social gatherings at Armstrong Hall and School Camp.

Front: Raymond Kulas, James McKeon, Richard Dundas, Thomas MacDonald.

First row: Alice Desmond, Irma Dostilio, Loraine Rochleau, Francis Dominick, Arthur Giovannangeli, Florence Hutchinson, Frank Linscott, Alice Hoskiewicz, Anna Cattabriga.

Second row: Ruth McViegh, Marie Messier, Lucille Jeanotte, Eileen Flanagan, Eileen McKenna, Dorothy Grace, Louise Lavoie, Frances Cuddemi, Dorothy Rivard, Florence Callahan, Alyce Fisher, Mary Stirk, Ethel Fish.

Third row: Jeanette Huneau, Laura Verderber, Dorothy Woinick, Phyllis O'Brien, Arlene Jenkins, Evelyn Sawyer, Bertrand Tardiff, Neil Sullivan, Chester Kingsman, Sophie Raucykevich, Bertha McLoy, Nellie Platukys, Winifred Champagne, Madeline Pishon.



DRAMATIC CLUB

THIS year the Dramatic Club has produced the three-act comedy "Little Shot" and the one-act plays "Solitaire", "Macbeth", and "Pierrot Will Not Grow Old."

The club believes that it is a privilege to give as many students as possible an opportunity to do practical work in play production. Possibly there are more members on each staff than are absolutely necessary, but all of them have a chance to obtain some experience in the many sided and fascinating business of putting on a play. The earnestness and competence with which everyone has worked confirms us in the belief that something worthwhile has been done in our sole objective to train future teachers to become play directors.

SCENE FROM "PIERROT WILL NOT GROW OLD"

James Leh, Barbara Erwin, June Kendall, Ernest Fiske, Richard Trufant, Andrew Crooker.



THE FORUM

THE Forum, with some twenty debates on its list of activities, has had a most active year. When school opened last fall, many new members were taken into the club. The upper classmen were immediately eligible to participate in varsity debates and added much valuable material to the debating squad. The freshmen members of the club engage in intra-Forum debates and thus receive a year of preliminary training before they become members of the varsity squad.

The club officers: Neil Sullivan, president; Doris Delaware, secretary; and Larry Goss, treasurer; have done an excellent piece of work in fulfilling their positions and administering to the needs of the club. It was through the efforts of president Sullivan that we were able to broadcast several debates over station WFEA at Manchester, N. H. Andrew Crooker, Jr. and Neil Sullivan have shared the honor of managing the Forum when they were not out practice teaching.

We were very sorry to lose Miss Edna McGlynn who has been our coach for eight years. She has taken a teaching position at Salem Teacher's College, Salem, Mass., and the Forum wishes her the best of success. However, we are very fortunate to have Mrs. Deans as Miss McGlynn's successor. She directs the activities of the women's debating squad and Mr. Waltz has charge of the men's squad.

On February 29, 1936, at the Saturday night social, the Forum presented the comedy, "Peanut County Court In Session". This was the night on which Kenneth L. Creighton made his debut as an actor by playing the part of a typical county judge.

First row: Lawrence Goss, Doris Delaware, Neil Sullivan, Natalie Haddock, Jean Taylor.

Second row: Sophie Raucykevich, Miriam Roby, Irma Dostilio, Helen Tsiotas, Alfreda Kyrka, Jane Langer, Dorothy Woinick, June Kendall, Phyllis O'Brien.

Third row: Philip Ide, James McKeon, Harold Graeme, James Whittemore, Ross Gale, Sherman Joslin, Andrew Crooker.

Fourth row: Kenneth Creighton, David Applebaum, Horace Schnare, Vladimir Leskowitz, David Greenlaw, Ernest Fiske, Paul Clark, Thomas MacDonald, Donald Cooney, Claire Wyman, Richard Dundas.



The members of the Forum have been invited by the debating clubs of Warner, Contoocook, and Henniker High Schools to judge their inter-school debates which are directed by the Bates College Debating Council. This is the first time that the Forum has carried on this type of work, but a great deal of it is apprehended in the future.

Each member of the Forum has three outstanding aims in view throughout the debating season. One is to familiarize himself with the current problems, the second is to develop clear and logical thinking, and the third is to gain the poise and confidence vital to fine speaking.

The success of the Forum has been very gratifying to both members and coaches. Our club is following the modern trend by banning all decision debates. The following colleges were on this years schedule: Middlebury College, Fitchburg Teacher's College, Springfield International College, University of Vermont, Boston College, Boston University, New Hampshire University, St. Michael's College, Pembroke, and Plymouth Normal School.

S. J.

VARSDITY DEBATING SQUAD

First row: Jean Taylor, Doris Delaware, Dorothy Woinick, Natalie Haddock, Phyllis O'Brien.

Second row: Philip Ide, Helen Tsiotas, Lawrence Goss, Robert Edmunds, Kenneth Creighton, Marion Bergeron, Andrew Crooker.

Third row: Robert Zieff, Sherman Joslin, Neil Sullivan, Louis Montrone, Ross Gale.



INTERNATIONAL RELATIONS CLUB

THE International Relations Club gives its members an opportunity to meet and discuss international affairs, with the purpose of developing active, intelligent consideration and understanding of the problems of the world today. This year the Club has brought several interesting speakers to the school as well as to its own members. It has also become affiliated with the Carnegie Endowment for International Peace, which has made it possible to start a comprehensive library of literature on International Relations.

Our most ambitious project was participation in the Model League of Nations of the New England Colleges. In spite of numerous difficulties we were able to send representatives to Williamstown, where a most pleasant and profitable week-end was enjoyed.

OFFICERS

President	Wesley F. Brett
Vice-President	Amilcare Scarponi
Secretary	Helen M. Pratt
Assistant Secretary	Mary Dearborn
Treasurer	Paul K. Stimson
Model League Correspondent	Phyllis O'Brien

First row: Miss Blake, Helen Pratt, Wesley Brett, Amilcare Scarponi, Paul Stimson, Miss Gregory.

Second row: Ethel Howe, Katherine Gage, Elizabeth Scribner, Elizabeth Harris, Dorothy Plaisted, Ruth Pollard, Dorothy Woinick.

Third row: Louis Montrone, Miriam Roby, Laura Eaves, Phyllis O'Brien, Beatrice Whitaker, Wilmer Carle, Helen Tsiotas, Doris Delaware, Lucille Plante, Richard Trufant.



KEENE CLUB

THE Keene Club, composed of local students and graduates from the Keene High School, have elected the following officers for this year:

President	Arthur Giovannangeli
Vice-President	Elizabeth Harris
Treasurer	Richard Beard
Secretary	Ruth Rix
Press Agent	Philip Ide

The first meeting of the year was held at the school camp on October 11, at which time there was an initiation of new members.

January 4, as a result of popular demand Philip Ide and Philip Whitney put on an improved version of "The House of Magic" for Saturday evening entertainment with the able assistance of Ralph Livingstone, a senior in K. H. S.

The Senior Class of the Keene High School was entertained at the Spaulding Gymnasium on April 22. This annual function is one of the most enjoyable and worthwhile parts of the Keene Club's yearly program.

First row: Arthur Ide, Richard Beard, Arthur Giovannangeli, Elizabeth Harris, Paul Reason.

Second row: Lucille Plante, Virginia Richardson, Evelyn Puffer, Ruth Harvey, Irma Dostilio, Philip Ide.

Third row: Helen Pratt, Dorothy Conway, Mary Johnson, Helen Thomas, Hortense Scott, Pauline Slocombe, Elizabeth Scribner, Wesley Brett, Mrs. Hudson, Hazel Lewis, Leon Mansfield, Marjorie Johnson, Roger Travers, James Leh.

Fourth row: Waldo Streeter, Robert Hopwood, Vladimir Leskowitz, Ernest Fiske, Richard Dundas, Clair Wyman, Edwin Randall, Stanley Johnson, Paul Nordman.



THE RURAL CLUB

THE Rural Club is composed mostly of students taking the Elementary Course, but other students are also eligible. The club has two purposes towards which it works, namely to stimulate greater interest in rural schools and to become better acquainted with rural life. Miss Idella K. Farnum, a faculty member, is the adviser.

Every year in May new officers are elected so that in September the club can begin its work. The initiation of new members, including freshmen and upper-classmen who have not previously joined, takes place in the fall at the School Camp. This starts off the year's work of the club.

The meetings are divided in such a way that there are three types—the business, the social, the educational. The club meets every second and fourth Tuesday of each month and is very active.

OFFICERS

President	Josephine Karwacki
Vice-President	Ruth Travers
Secretary	Velma Bartlett
Treasurer	Eleanor Childs

Front seated: Myra Hood, Ruth Kingsbury, Madeline Pishon, Winifred Champagne, Marie Messier.

First row: Flora Longa, Ethel Fish, Josephine Karwacki, Ruth Travers, Eleanor Child, Velma Bartlett, Elizabeth Cotton, Alice Hoskiewitz, Katherine Lynch, Jeannette Huneau.

Second row: Bessie Adams, Ruth McViegh, Laura Verderber, Louise Hatch, Anna Wilgeroth, Helen Noyes, Natalie Haddock, Miss Farnum, Ferne Coffin, LaMyra Harriman, Mary Stirk, Dorothy Smith, Ruth Brown, Geneva Smith.

Third row: Ruth Harvey, Evelyn Werren, Sophie Raucykevich, Marian Rollins, Frances Stevens, Fern Lloyd, Florence Callahan, Dorothy Conway, Vernon Perkins, Janette Haggart, Grace Vickery, Nellie Malfet, Doris Fowler, Roberta Leaf, Dorothy Stewart, Raymond Kulas, Rene Mathieu.



ROSTRA

ROME fell, but Rostra rises, and discovers on the way up that we have not changed too much since the time of the Caesars. In fact, the members dug up a certain fellow who thought and acted so much like our own favorite, Will Rogers, that the Kronicle published an edition especially for him—you all know Horace. He just had his two hundreth birthday. Miss Buffum, reporting on a basis of her recent visit, says that modern Italy has a lot in common with Old Rome, but the race that looks the most like the Romans are—would you believe it?—the Americans. Mussolini made possible a good comparison with the dictator, Julius, both as a character and through his army and governmental procedure. Also, considering the several phases of modern Italian literature in the light of past Latin readings was surprising enough. To round out the dramatic angle of their discoveries, our local Latinites presented at a Saturday night social, "The Mayor's Hose", a farce in blank verse which employed the efforts of all members. This year was conducted under the presidency of Miss Dorothy Plaisted and was concerned in general with a comparison of what was with what now is.

First row: Beatrice Whitaker, Dorothy Plaisted, Barbara Capron, Dorothy Grace, Grace Blanchard.

Back row: Katherine Gage, Ellen Hartshorn, Mae Youngquist, Helen Pratt, Nellie Walent.



Y. W. C. A.

THE Y. W. C. A. of Keene Normal School is a branch of the National Young Women's Christian Association. It is composed of a large number of Protestant girls whose purpose it is in meeting twice a month, to consider Christian problems and to understand them by means of discussions and various talks by speakers.

The Y. W. C. A. sponsors the Reception to the Freshmen in the Fall and later on in the year, various activities, one of which is the Annual Christmas Party.

The membership for this year is 65 with the following officers:

President	Beatrice Judkins
Vice-President	Evelyn Pederson
Secretary	Lois Melendy
Treasurer	Shirley McIntyre
Faculty Advisor	Miss Blake

Y. W. C. A. OFFICERS

Left to right: Shirley McIntyre, Lois Melendy, Beatrice Judkins, Evelyn Pederson, Miss Blake.

THE DINING ROOM GANG

Seated: Thelma Dearborn, Elizabeth Cotton, Rene Mathieu, Richard Trufant, David Greenlaw, Natalie Haddock, Barbara Noyes, Lillian Ryley, Bethel Emery, Florence Duston, Josephine Perkins, Ruth Hoey, Esther Hussey.

Standing: Marion Wood, Esther Blood, Harriette Crosby, Bertha Raines, Edith Noble, Dorothy Stewart, Marie Johnson, Mary Stirk, Bertha McLoy, Eleanor Hunt, Nellie Platukys, Claire Paddleford, Florence Allen, LaMyra Harriman, David Armstrong, Ethel Howe, Henry Chase, Kenneth Creighton, Robert Edmunds.



Athletics

W. A. A.

THIS year the Women's Athletic Association's slogan "A sport for every girl and every girl in a sport" has been more completely carried out than ever before. Evidence of this was the Fall Sports day. Fitchburg Teacher's College girls joined with the Keene Normal girls in a play day which took in about one hundred and thirty girls. All the girls were divided into two teams, blue and yellow. The huge success of this day we owe to Miss Marjory Bateman who has been untiring in her efforts to eliminate competition between schools.

A ping pong table has been set up in the Huntress Social room and any spare period during the day it is very popular. Ping pong has been added to the long list from which a girl may choose her extra curricula activities.

Miss Padden, Assistant Physical Education Director has shown sincere interest in the activities of the school and the girls appreciate it greatly.

The Women's Athletic Association offers membership to every Freshman girl who wins one hundred points for participation in the many, varied sports of the school and who achieves a scholastic average of 80%.

OFFICERS

President	Florence Duston
Vice-President	Katherine Gage
Secretary	Edith Noble
Treasurer	Velma Bartlett

HEADS OF SPORTS

Badminton	Ellen Hartshorn
Archery	Florence Edwards
Basketball	Rita Leonard
Hockey	Evelyn Pedersen
Tennis	Arlene Richards
Swimming	Dorothy Plaisted
Baseball	Betsey Crowell
Bowling	Eleanor Child
Volleyball	Shirley McIntyre



HEADS OF SPORTS

Seated: Katherine Gage, Velma Bartlett, Eleanor Child, Edith Noble, Florence Duston.

Standing: Lois Smith, Evelyn Pederson, Ellen Hartshorn, Betsey Crowell, Florence Edwards, Janet Haggart, Rita Leonard, Dorothy Plaisted, Ruth Chadwick, Jane Langer.

BADMINTON TEAM

Seated: Ellen Hartshorn, Katherine Gage, Dorothy Plaisted.

Standing: Natalie Haddock, Jane Langer.





VARSITY HOCKEY SQUAD

First row: Edwina Luneau, Thelma Paige, Evelyn Pederson, Irma Dos-tilio, Ruth Bernier.

Second row: Alfreda Kyrka, Marion Truell, Lois Smith, Marcella Finley, Shirley McIntyre, Ann Crowley, Helen Thomas.

Third row: Jane Langer, Natalie Haddock.

LIFE SAVERS

Lois Smith, Stanley Johnson, Ross Gale, Andrew Crooker, James Jordan, James Whittemore, Dorothy Plaisted, Ruth Chadwick, Jane Langer, Frank Linscott, Helen Pratt, Louise Lavoie, Ann Crowley, Edith Sanborn.



MEN'S ATHLETICS 1935-36

The past season of athletics has been a highly successful and interesting one.

Keene Normal School realizes the value of teachers with healthy minds and bodies. An extensive program including varsity and intramural sports has been carried on.

The motto seems to have been "A Sport for All and All for a Sport."

TRACK

Last spring for the first time a track meet was held with the various teachers colleges of New England being invited. We received representatives from Fitchburg State Teachers College, Farmington Normal, Castleton Normal and Gorham Normal.

The track men showed up well and are looking forward to a good 1936 season.

INTRAMURAL SPEEDBALL

In the fall the various class groups of the school staged some fast and furious games of speedball.

In an elimination tournament the sophomores were declared school champions.

HORSESHOE TOURNAMENT

The Horseshoe tournament staged this fall brought out some really fine horseshoe "flingers" from the school. We hope this national pastime will find favor again next year.

INTRAMURAL BASKETBALL

The Intramural basketball games brought forth some closely contested games. Last year's champions, the sophomores were dethroned by a powerful Senior team.

Several prospective "stars" were uncovered and the spectators witnessed some real games.

PING PONG TOURNAMENT

This year the Ping Pong tournament was held in the Spaulding Gym. Seats for spectators were arranged and two tables were provided for playing the games. Some very interesting matches were held and everyone was amazed to see how fast "that little ball can go". Robert Zieff was again the champion.

TENNIS

Our tennis players enjoyed a successful season and won the title of Teachers College Champions of New England.

Under the guidance of Mr. Drenan an extensive schedule was undertaken.

A second team also saw service in a regular schedule of games and several promising players were discovered to strengthen the team this spring.

At this time we wish to pay tribute to Coach Caldwell for his fine work in coaching the men's athletic teams and may success accompany him in future Keene Normal games.



Varsity Basketball Squad

Seated: James Noukas, Paul McNamara, Paul Nordman, Neil Sullivan, Arthur Giovannangeli, Stanley Johnson, Chester Kingsman.

Standing: Mr. Caldwell, Amilcare Scarponi, James Leh, Robert Tapply, Charles Beard, Paul Clark, Gordon Tate, David Applebaum, Ross Gale, Daniel Tolman.

Cross Country

First row: James Jordan, Robert Edmunds, Stanley Johnson.

Second row: Raymond Kulas, Sherman Joslin, Lawrence Goss, Wilmer Carle, Roger Travis.





TENNIS TEAM

James Leh, Joseph Baines, Donald Piper, Mr. Drenan, Paul Brooks,
Paul Stimson, James Noukas.

TRACK TEAM

First row: Robert Edmunds, Joseph Baines, Henry Hastings, James Whittemore.

Second row: Waldo Streeter, Neil Sullivan, Walter Zygmunt.

Third row: David Armstrong, Ross Gale.



BASEBALL

Keene Normal School lays claim to the New England College Championship by virtue of victories over the leading teachers colleges of New England.

In its schedule of ten games Keene won nine and lost one.

Keene served 70 runs to 25 by opponents.

The heavy batting of the regulars wound up with a team average of 312 for the season.

The Lettermen

Name	Position
Elson L. Herrick—Gorham	S.S.
Arthur Giovannangeli—Keene	P.
Kenneth Creighton—Hampton	3b.
James A. Jordan—Stratford	L.F.
Carroll Fortier—Chocorua	P.
William St. Jacques—Laconia	C.
Edward Hanna—West Swanzey	C.F.
David Fortier—Chocorua	1b
Walter Palmer—Enfield	R.F.
George Corson—Keene	2b

The team is looking forward for a good 1936 season.

Returning lettermen are Elson Herrick, Arthur Giovannangeli, Kenneth Creighton, James Jordan, Walter Palmer, and George Corson. The managers are Richard Trufant and Lawrence Goss.

BASEBALL TEAM

First row: William St. Jacques, Carroll Fortier, Arthur Giovannangeli, Elson Herrick, Kenneth Creighton, David Fortier.

Second row: Walter Palmer, Jesse Davis, George Corson, Lester Harris, James Jordan.

Third row: Mr. Caldwell, Lawrence Goss, Richard Trufant, Vernon Perkins.



Autographs

PUBLISHED BY THE STUDENTS OF
THE STATE TEACHERS' COLLEGE
AT KEENE, NEW HAMPSHIRE